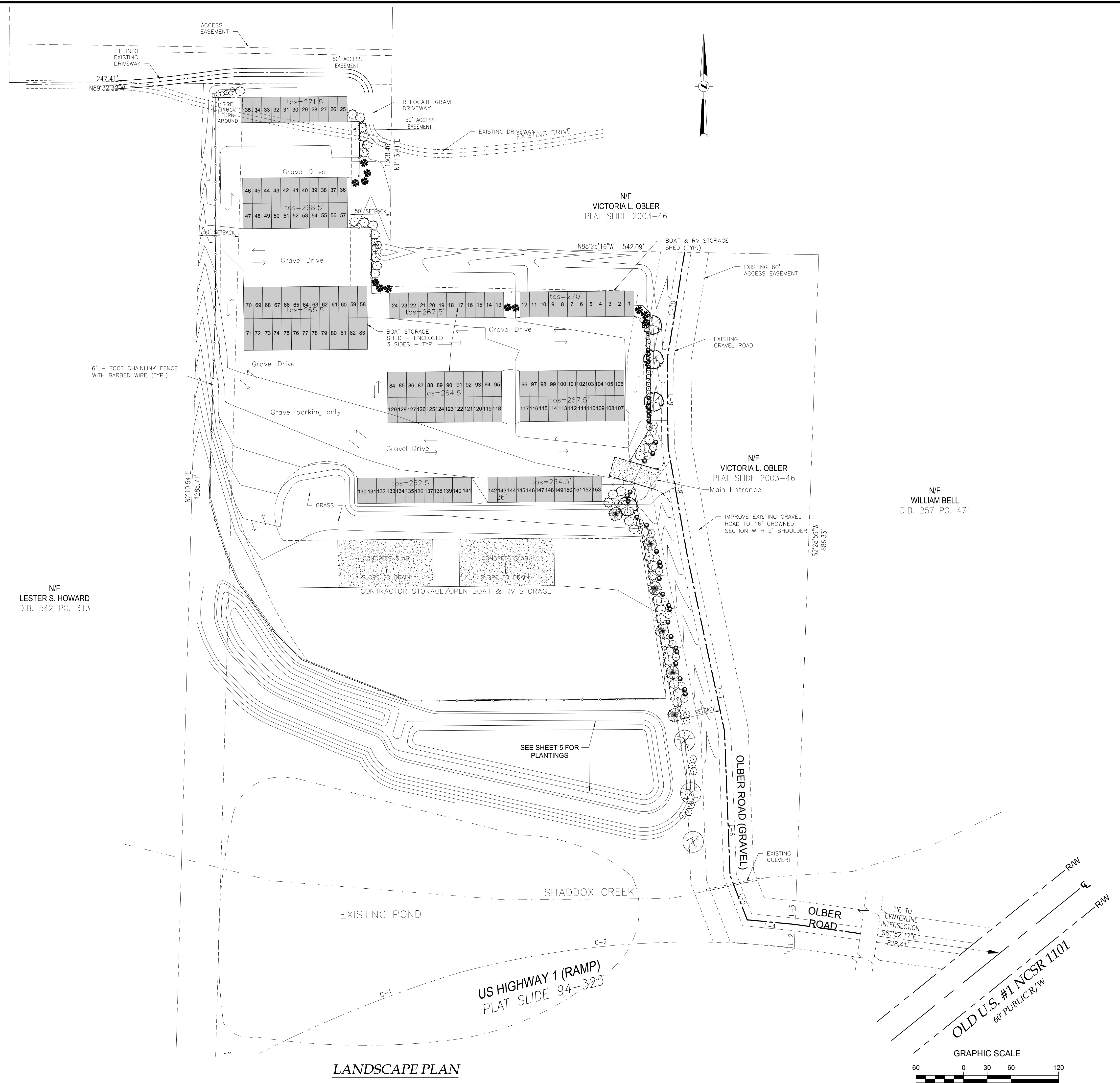


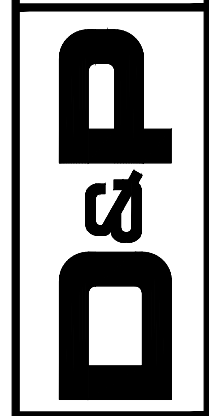
PROPOSED NEW SCREENING PLANTING

SYM.	QTY.	BOTANICAL NAME	COMMON NAME	CAL.	HGT.	ROOT
TREES						
⊗	3	QUERCUS 'ALBA'	WHITE OAK		8-10'	
⊗	4	ACER RUBRUM	RED MAPLE		8-10'	
⊗	35	LIEK 'NELLIA R. STEVENS'	HOLLY 'NELLIA R. STEVENS'		5-6'	
⊗	6	CRYPTOMERIA JAPONICA 'YOSHINO'	JAPANESE CEDAR		5-6'	
⊗	12	ARBORVITAE 'GREEN GIANT'	ARBORVITAE 'GREEN GIANT'		5-6'	
SHRUBS						
⊙	16	ILICUM PARVIFLORUM	"ANISE TREE"		24"	3 GAL.
⊙	34	LOROPETALUM CHINENSIS 'RUBY'	CHINESE FRINGE FLOWER (EVERGREEN SHRUB 6' TALL)		18-24"	3 GAL.
⊙	13	CHAMAEYCYPARIS 'GOLD MOP'	CYPRESS 'GOLD MOP'		18-24"	3 GAL.
⊙	20	LLEX CORNUTA 'BURFORDII NANA'	DWARF BURFORD HOLLY		18-24"	3 GAL.



JOB NO. ?
 DESIGN ARK
 DRAWN MAT
 CHECKED ARK
 SCALE 1" = 60'
 FILE Gress Storage.dwg

REVISIONS:
 DIEHL & PHILLIPS, P.A.
 CONSULTING ENGINEERS - LIC. NO. C-0465
 1500 Piney Plains Rd., Suite 200
 CARY, N.C. 27518 • (919) 467-9972



GRESS STORAGE
 CHATHAM COUNTY, NORTH CAROLINA

LANDSCAPE PLAN
 SHEET 9 OF 9