

COMPOSTING AT HOME



Quick training guide for composting at home.

HOW TO COMPOST

1

DECIDE ON LOCATION:

- Easy-access (for your convenience)
- Bare soil (for microorganisms to enter the compost from beneath)
- Flat ground (for good drainage)

2

IN THE KITCHEN:

Choose a container with a **tight** lid (keep those fruit flies away!) to collect food scraps.

Chop up larger items (like watermelon & pumpkins).

3

ADD YOUR INGREDIENTS:

- Empty your kitchen container into your compost bin once a week.
- Stir in your new material.
- Cover your food scraps with a layer of leaves or browns.

4

HARVESTING:

Wait 6-12 months and let nature do its work. When the compost is dark brown and earthy, it's ready!

THE FOUR SEASONS OF COMPOSTING

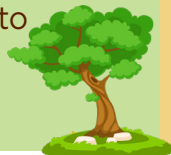
SPRING:

Stir your bin and add some dirt to kick start it.



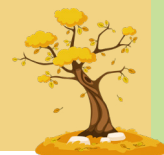
SUMMER:

Stir your bin. If the material looks dry, add some water to moisten it.



FALL:

Stir your bin.



WINTER:

Decomposition slows down; let your bin fill up.



Your bin will work best if it's fed a diverse diet of nitrogen-rich greens and carbon-rich browns.

FRESH GREENS

Nitrogen-Rich



Grass and plant trimmings



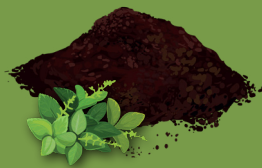
Fruits and vegetables



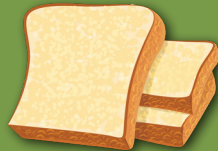
Egg shells



Rice and legumes



Tea leaves and coffee grounds



Bread

DRY BROWNS

Carbon-Rich



Dead leaves, straw and hay



Broken up sticks and wood chips



Paper towels



Napkins



Paper products with no plastic liners
(Tear up)

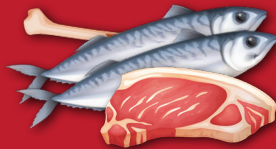


Coffee filters

KEEP THESE OUT!



Plastic-coated paper plates



Meat, fish and bones



Food cooked with grease



Dairy products



Certified compostable products*



Plastic-lined to-go containers



To-go cold and hot drink cups



Snack wrappers

* Compostable hot and cold cups, cutlery and clamshells. These are compostable **ONLY** in commercial compost piles, not backyard.



The N.C. Division of Environmental Assistance and Customer Service (DEACS) is a non-regulatory division of N.C. DEQ offering technical and financial assistance to businesses, manufacturers, local governments, institutions, economic developers and citizens in environmental management. For questions, call 1-877-623-6748.