

LIGHTING PLAN NOTES:

1. THE CE GROUP, INC. IS NOT RESPONSIBLE FOR SAFETY AND SECURITY RISKS DUE INADEQUATE LIGHTING LEVELS.
2. MAINTAINED FOOTCANDLES AT GRADE USING A 0.72 LIGHT LOSS FACTOR.
3. LIGHT LEVELS MODELED USING VISUAL - PROFESSIONAL EDITION SOFTWARE, VERSION 2.06.0234
4. ALL FIXTURES TO MEET IESNA FULL CUTOFF CLASSIFICATION.
5. UNDERGROUND UTILITIES (EXISTING AND PROPOSED) ARE FOR INFORMATIONAL PURPOSES ONLY. SEE APPROPRIATE SHEET IN THIS SET FOR DETAILS. CONTRACTOR TO VERIFY THE HORIZONTAL AND VERTICAL LOCATION OF ALL UTILITIES PRIOR TO CONSTRUCTION, AND NOTIFY THE OWNER AND/OR ENGINEER OF ANY DISCREPANCIES PRIOR TO THE COMMENCEMENT OF WORK.
6. SEE ARCHITECTURAL DRAWINGS FOR INFORMATION REGARDING EXTERIOR DECORATIVE FIXTURES.

LIGHTING DATA	
PARKING AREA	
AVERAGE	2.8 fc
MAXIMUM	34.3 fc
MINIMUM	0.7 fc
AVG / MIN	4.0 : 1

LEGEND

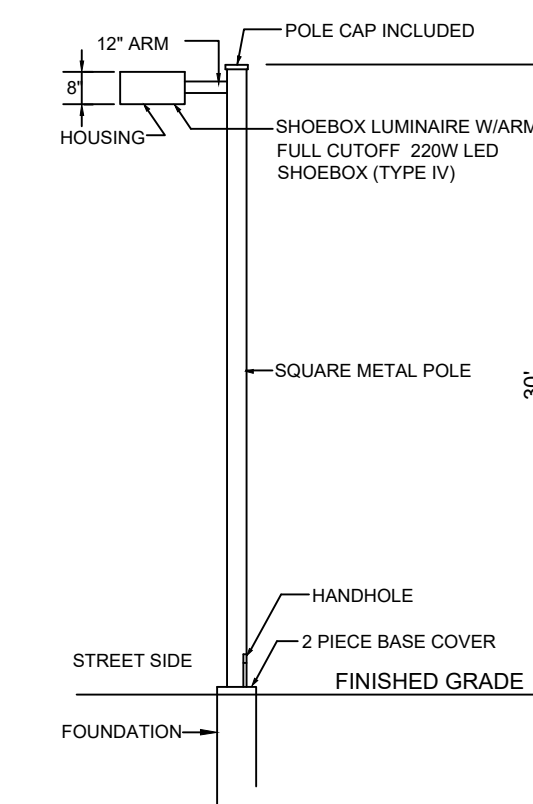
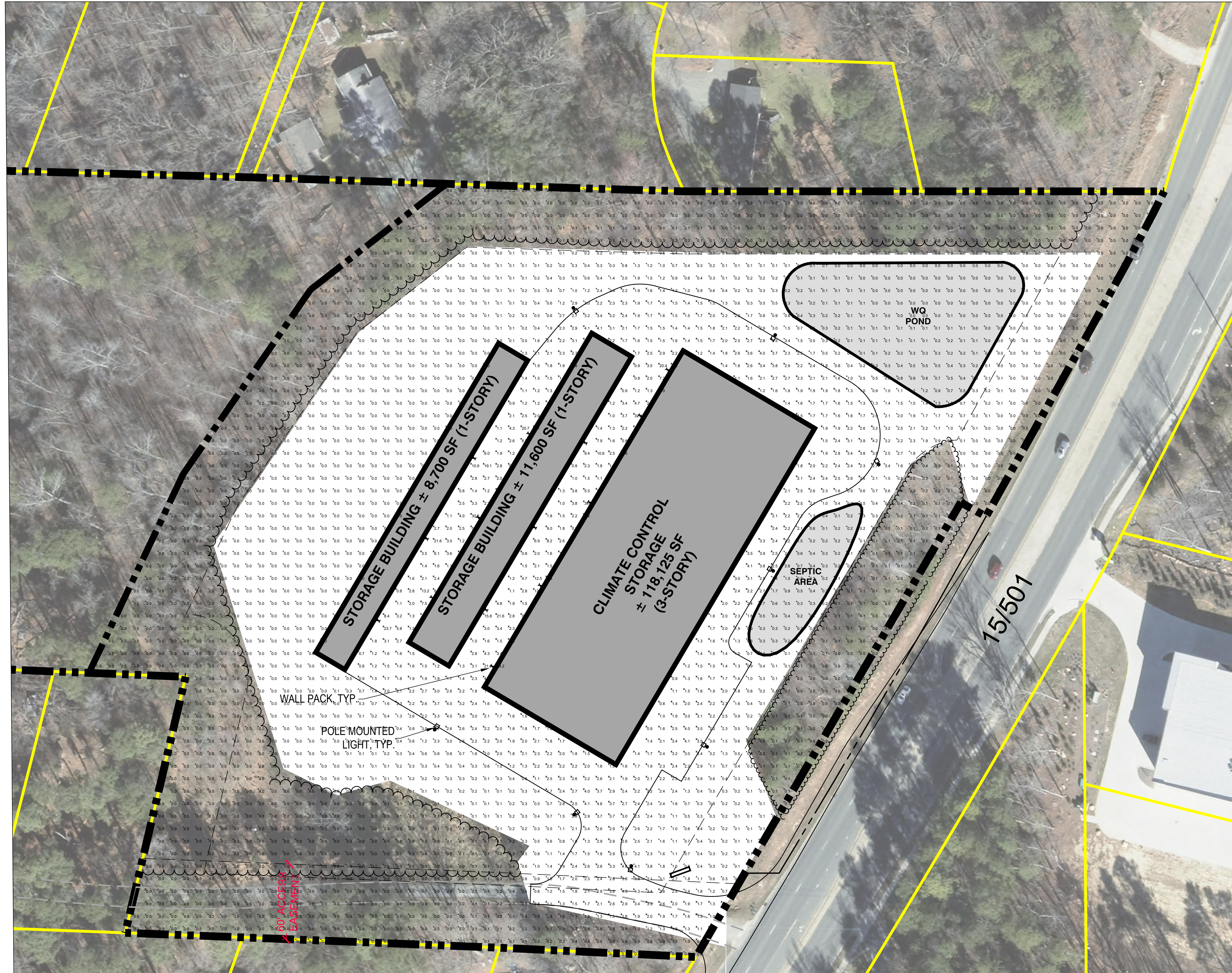
- SHOEBOX LIGHTS
8 EA - DUKE ENERGY PROGRESS SHOEBOX - 220W LED - TYPE IV THROW PATTERN FULL CUTOFF- 30' MOUNTING HEIGHT
- WALL PACKS
14 EA - EAGLE II SERIES WALL PACK- OR APPROVED EQUAL - HIGH PRESSURE SODIUM, PRESSED GLASS LENS 150 WATT - 12' MOUNTING HEIGHT



LIGHTING EXHIBIT FOR 15/501 MINI STORAGE CHATHAM COUNTY, NORTH CAROLINA JANUARY 15, 2020

SITE DATA

PROPERTY OWNER:	MAURICE E. STONE
AKPAR:	3080
ADDRESS:	72 MARVIN EDWARDS LN CHAPEL HILL, NORTH CAROLINA
EXISTING ZONING:	R-2
WATERSHED DISTRICT:	WS-II BW, WS-IV PA
PROPOSED SITE:	
TOTAL PROPERTY ACREAGE:	± 17.64 ACRES
PROPOSED ZONING:	CU-RB (MINI STORAGE)
PROPOSED R.O.W. DEDICATION:	± 0.20 ACRES
PROPOSED DEVELOPMENT	
PARCEL 1:	± 8.11 ACRES
STORAGE AREA:	± 138,425 SF
IMPERVIOUS:	± 122,505 SF (± 34.70%)



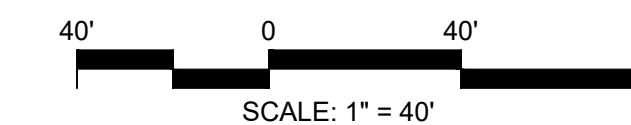
NOTES:

1. FINAL LEVELING OF POLE IS TO BE MADE THROUGH USE OF DOUBLE NUTS.
2. ALL FOUR SIDES OF POLE ARE DRILLED WITH 3 HOLES AS SHOWN IN INSERT AND WASHERS PROVIDED WITH ANCHOR BOLTS OR GALVANIZED SHIMS. ABOVE TO ACCOMMODATE A MAXIMUM OF FOUR LUMINAIRES. STEEL PLATES OR PLUG COVER EACH SIDE UNTIL UNITS ARE INSTALLED.
3. SPECIAL HANDLING OF THESE SQUARE POLES IS NECESSARY TO MINIMIZE DAMAGE TO FINISH OF POLE. A NYLON SLING SHOULD BE USED TO LIFT POLE AT ALL TIMES. CHAINS, CABLES, OR ROPES MUST NOT BE USED. A CAN OF TOUCH-UP PAINT IS INCLUDED WITH ACCESSORIES FOR EACH POLE.
4. FOLLOW MANUFACTURER'S INSTRUCTIONS FOR ASSEMBLY AND ATTACHMENT OF FIXTURE(S) AND ARM(S) TO POLE.
5. WHEN APPLICABLE, NEW POLE SHALL BE POSITIONED SUCH THAT THE HANDHOLE IS FACING AWAY FROM THE STREET.
6. FOR MULTIPLE LIGHTING CIRCUITS, CONNECT THE SOURCE AND LOAD CONDUCTORS INTO THE HANDHOLE AND CONNECT USING WIRE NUTS FOR ALL #10 CONDUCTORS OR THE STREETLIGHT CONNECTION BLOCK FOR LARGER (1/0 MAX.) SOURCE AND LOAD CONDUCTORS.

SHOEBOX LUMINAIRES AND SQUARE POLES
N.T.S.



NORTH



PRELIMINARY
FOR REVIEW ONLY
NOT RELEASED
FOR CONSTRUCTION

