

I, LEONARD H. SULLIVAN, JR., CERTIFY THAT THIS PLAT WAS DRAWN UNDER MY SUPERVISION FROM AN ACTUAL SURVEY MADE UNDER MY SUPERVISION USING REFERENCES SHOWN HEREON; THAT THE BOUNDARIES NOT SURVEYED ARE SHOWN AS BROKEN LINES PLOTTED FROM INFORMATION SHOWN HEREON; THAT THE RATIO OF PRECISION AS CALCULATED IS 1: _____; THAT THIS PLAT WAS PREPARED IN ACCORDANCE WITH G. S. 47-30 AS AMENDED. WITNESS MY ORIGINAL SIGNATURE, LICENSE NUMBER, AND SEAL THIS _____ DAY OF _____ A.D., 2019

SURVEYOR

LICENSE NUMBER

ALSO, I CERTIFY:

A. THAT THE SURVEY CREATES A SUBDIVISION OF LAND WITHIN THE AREA OF A COUNTY OR MUNICIPALITY THAT HAS AN ORDINANCE THAT REGULATES PARCELS OF LAND

N/F CZYZENSKI
AKPAR = 85794
PB 2007 Pg 290

N/F TOMS
AKPAR = 78069
LOT 28
PB 2003 Pg 88

N/F GARVER
AKPAR = 78067
LOT 26
PB 2001 Pg 58

N/F FREANDUCH
AKPAR = 78061
LOT 22A
PB 2001 Pg 58

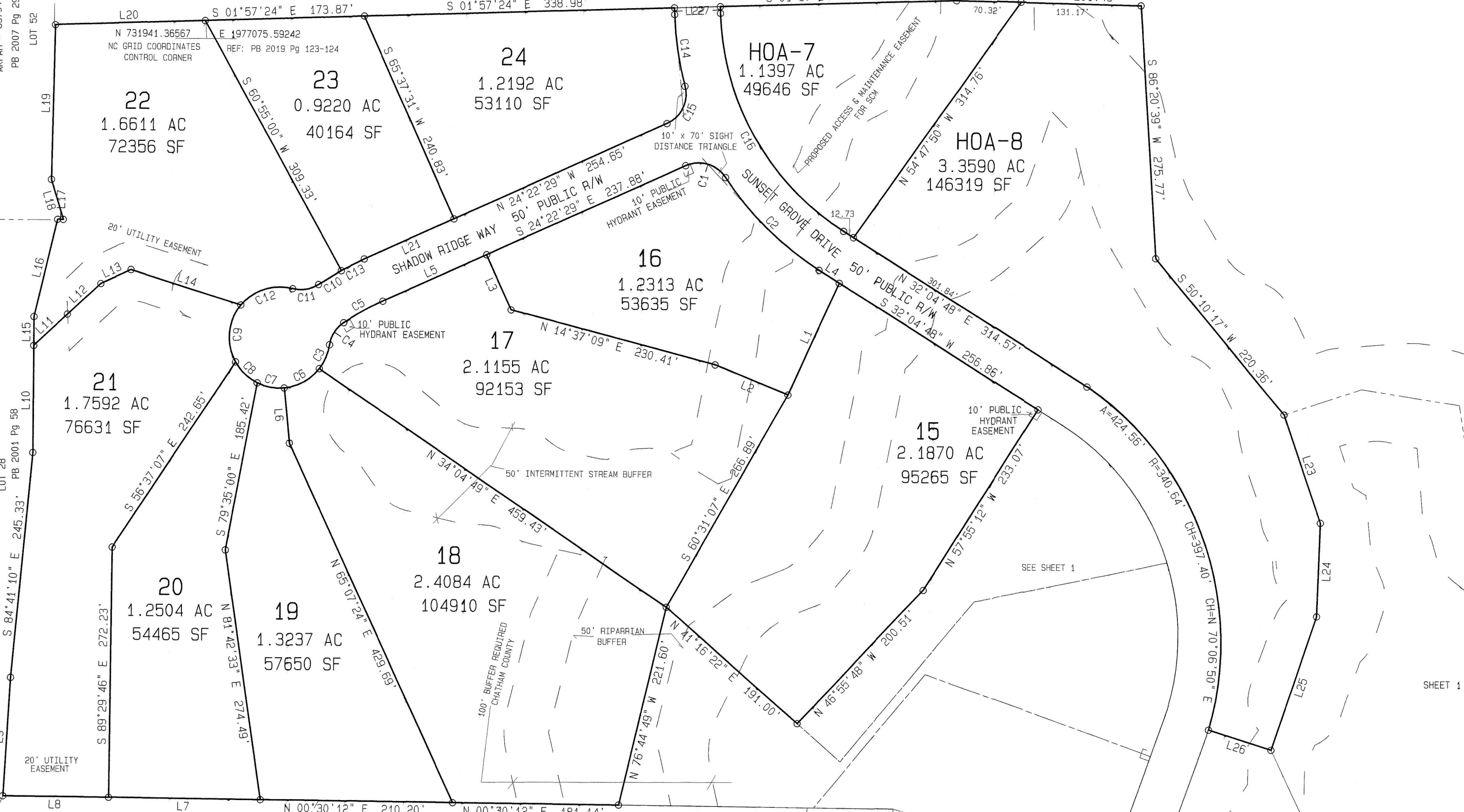
N/F MONTERRANE
PROPERTY OWNERS
ASSOCIATION
AKPAR = 78133
PB 2001 Pg 58

CURVE	ARC	RADIUS	CHORD LENGTH	CHORD BEARING
C1	49.38	35.00	46.37	S 16°01'39" W
C2	144.43	340.00	143.34	S 44°14'57" W
C3	28.38	55.00	28.07	S 67°01'03" E
C4	29.44	35.00	28.58	S 57°42'15" E
C5	49.04	290.01	48.98	S 29°12'31" E
C6	44.77	55.00	43.54	S 28°55'01" E
C7	30.41	55.00	30.03	S 10°12'34" W
C8	33.59	55.00	32.60	S 43°19'15" W
C9	66.05	55.00	62.15	N 85°02'17" N
C10	29.16	340.00	29.15	N 31°31'46" W
C11	29.44	35.00	28.58	N 09°30'35" W
C12	62.60	55.00	59.28	N 18°01'39" W
C13	27.54	340.00	27.93	N 26°43'45" W
C14	78.40	340.00	78.22	S 81°28'18" W
C15	49.35	35.00	45.37	N 64°48'15" W
C16	283.26	290.00	272.13	N 60°03'42" E

LINE	BEARING	DISTANCE
L1	S 65°38'09" E	133.99
L2	N 22°00'22" E	88.93
L3	N 65°37'31" E	65.77
L4	S 32°04'48" W	26.06
L5	S 24°22'29" E	124.20
L6	N 84°24'08" E	60.96
L7	N 00°31'19" E	165.68
L8	N 00°24'38" E	115.44
L9	S 85°51'41" E	123.38
L10	S 89°53'59" E	118.67
L11	S 43°06'25" E	50.04
L12	S 43°06'25" E	49.74
L13	S 24°52'36" E	35.17
L14	S 17°20'58" W	128.01
L15	S 89°53'59" E	31.46
L16	S 76°39'51" E	108.68
L17	S 01°02'01" W	5.15
L18	N 73°04'44" E	45.75
L19	S 88°54'30" E	167.97
L20	S 01°56'44" E	163.92
L21	N 24°22'29" W	107.43
L22	S 88°02'36" W	7.46
L23	S 71°05'22" W	124.66
L24	N 88°02'03" W	102.15
L25	N 71°26'47" W	153.83
L26	N 17°25'41" E	71.62
L27	N 88°02'36" E	7.46

N/F CORN
AKPAR = 17416
DB 568 Pg 558

N/F CONTENTNEA
AKPAR = 17357
BOM 2007 Pg 484



SHEET 1

PAGE 2 OF 3

SULLIVAN SURVEYING
1143-D EXECUTIVE CIRCLE CARY, NC 27511
(919) 469-4738 FAX: (919) 469-8447
F-0507

OWNER(S):
CHATHAM CAPITAL, L.L.C.
400 MARKET STREET
CHAPEL HILL, N.C. 27516
DB 1676 Pg 506 & 765 Pg 244

SCALE IN FEET
100 50 0 100 200

SUBDIVISION MAP:
SUNSET GROVE PHASE 2

NEW HOPE TOWNSHIP	
CHATHAM COUNTY	NORTH CAROLINA
SCALE: 1" = 100'	PIN: 9773-60-6892 (MAIN)
DRAWN BY: LYNNIE	SURVEYED BY: TREY
DATE: 29 AUGUST 2019	S?PACS0FT/2016/SSGR0V/SG2A