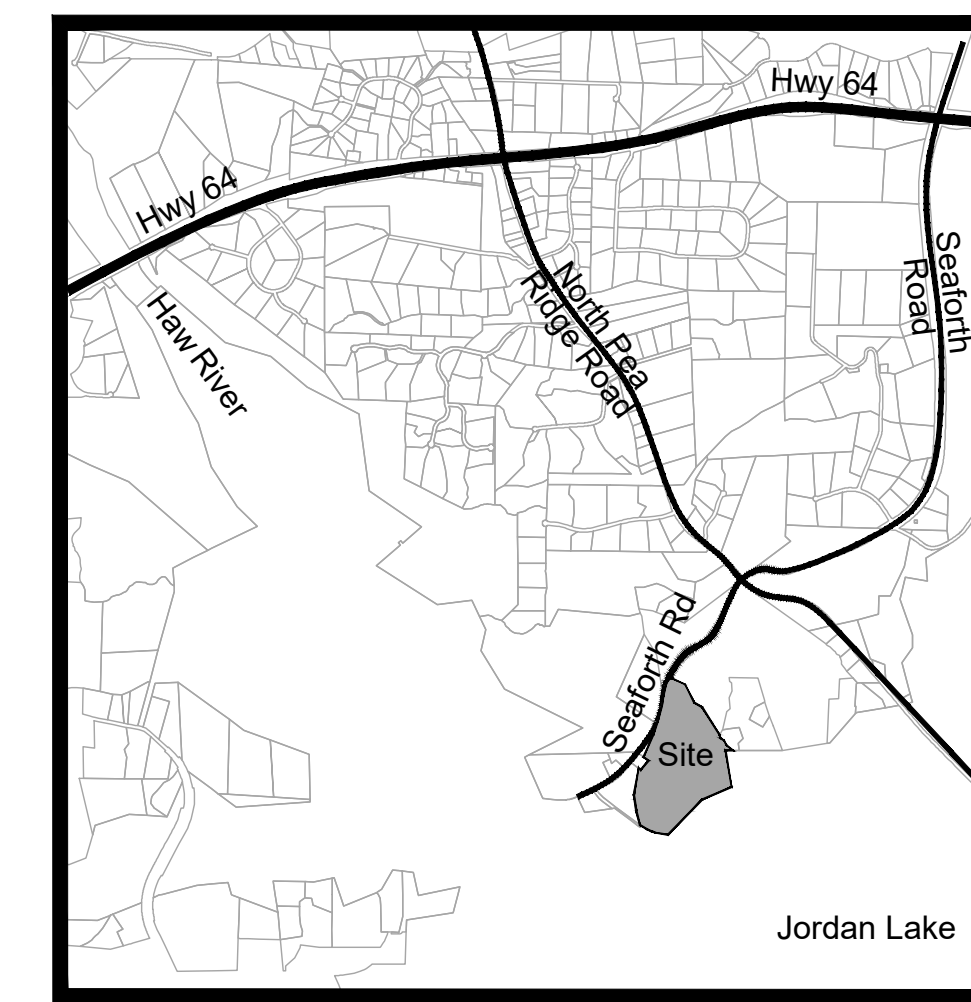
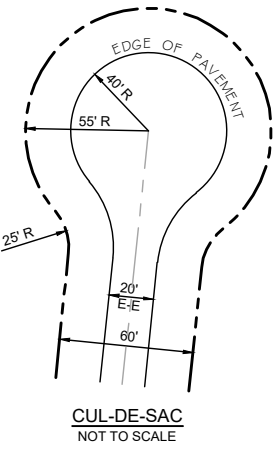
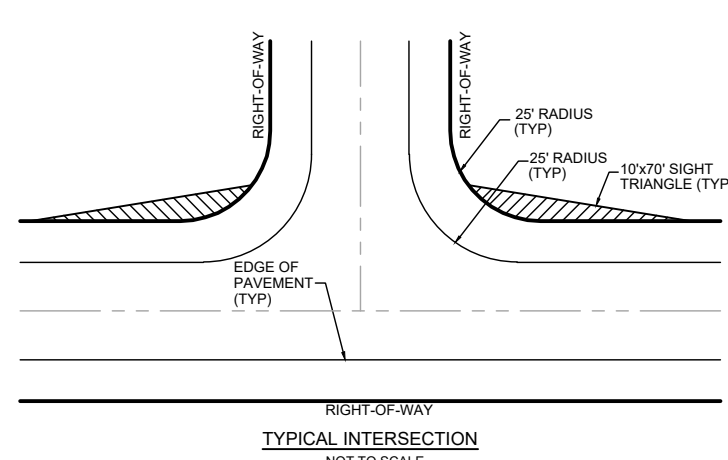
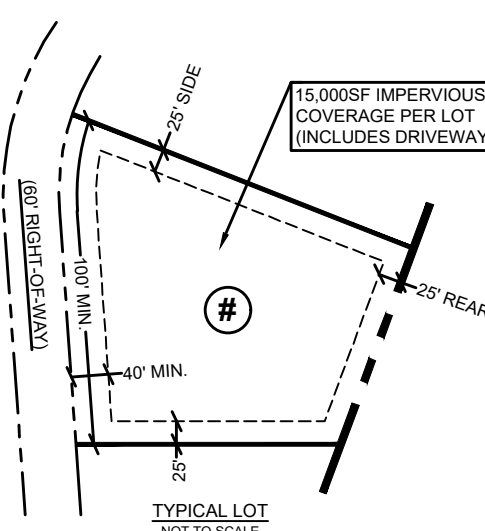
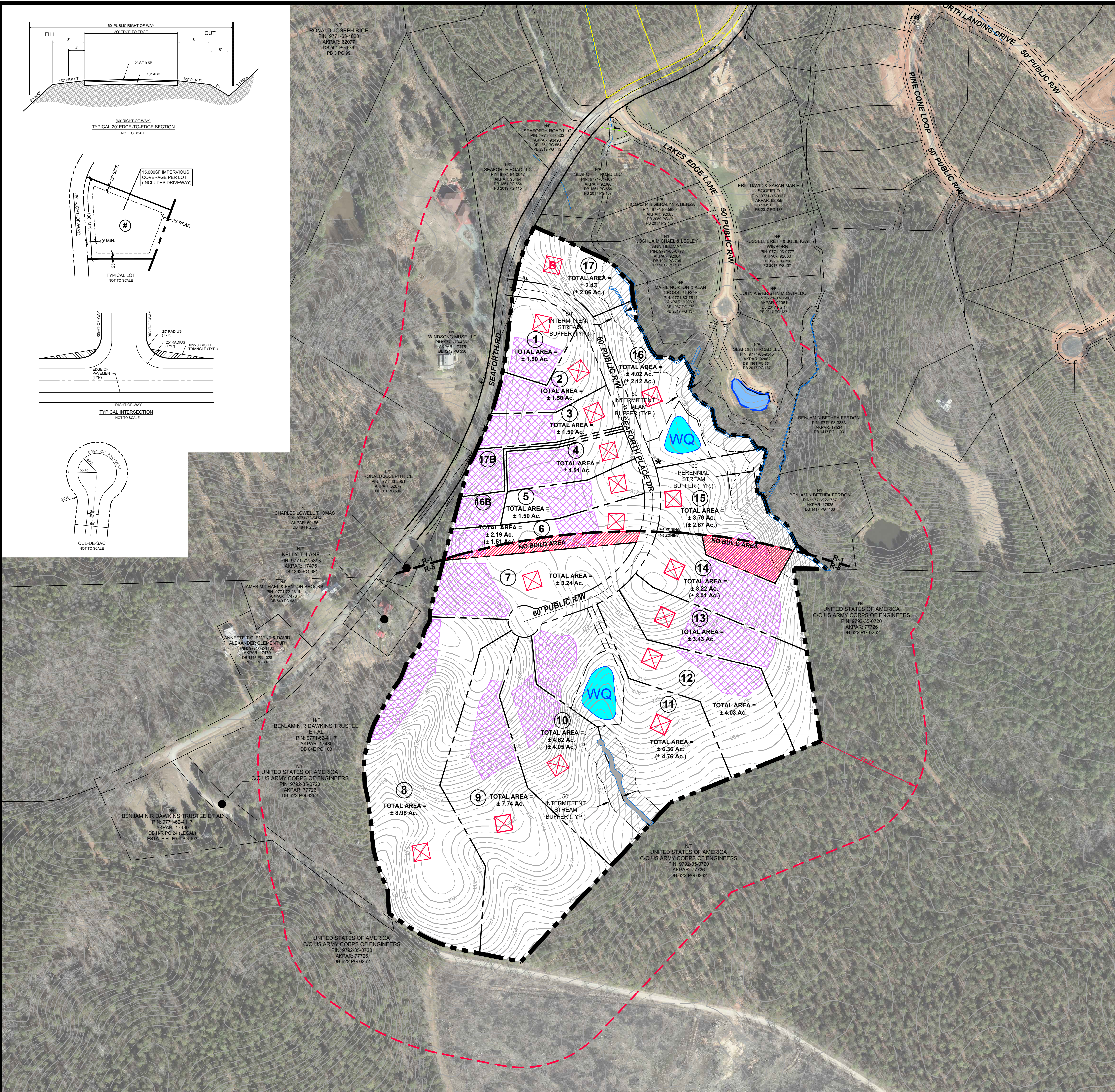


TYPICAL 20' EDGE-TO-EDGE SECTION
NOT TO SCALE



Vicinity Map
Not To Scale
NORTH

SEAFORTH PLACE FIRST PLAT CHATHAM COUNTY, NC NOVEMBER 21, 2019

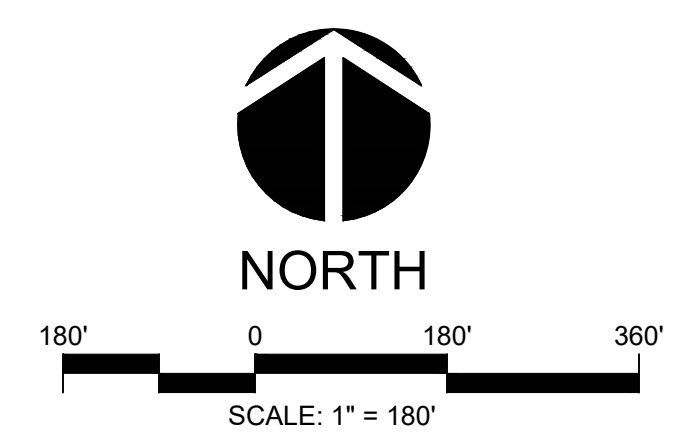


SITE DATA:

TOTAL AREA:	64.714 Ac.
AREA IN ROW (SEAFORTH RD):	0.617 Ac.
AREA IN NEW PUBLIC ROW:	2.618 Ac.
TOTAL PARCEL AREA:	61.936 Ac.
TOTAL LOTS:	± 17 LOTS
LOT AREA IN R-5:	± 42.19 Ac.
R-5 LOTS:	8 LOTS
R-5 AVERAGE LOT SIZE:	± 5.27 Ac.
LOT AREA IN R-1:	± 19.26 Ac.
R-1 LOTS:	9 LOTS
R-1 AVERAGE LOT SIZE:	± 2.14 Ac.
LENGTH OF ROADS:	± 1,859 LF

LEGEND

- * APPROXIMATE KIOSK LOCATION
- APPROXIMATE SEPTIC FIELD
- STREAM BUFFERS
- PROPOSED WATER QUALITY PONDS
- PROPOSED POND EASEMENT
- NO DWELLING OR ABOVE GROUND STRUCTURES IN R-5



ENGINEER / SURVEYOR:
CE GROUP, INC.
301 GLENWOOD AVENUE, SUITE 220
RALEIGH, NC 27603
CONTACT: MARK ASHNESS, PE, ASLA, LEED AP
PHONE: 919.367.8790
EMAIL: MARK@CEGROUPINC.COM

OWNER/DEVELOPER
SWAIN LAND & TIMBER, LLC
117 EDINBURG DRIVE S.
SUITE 101
CARY, NC 27511
CONTACT: HADLEY KIRKLAND
PHONE: 919.417.2990
HADLEY@SWAINCO.COM



CE GROUP
301 GLENWOOD AVE. SUITE 220
RALEIGH, NC 27603
PHONE: 919-367-8790
www.cegroupinc.com
License # C-1739

NOTES:

1. INFORMATION PROVIDED BY S&E/C
2. STREAM CALLS BASED UPON COUNTY & ACOE FIELD MEETING