

62379

35.48A
PARCEL 1 TR-1
C P & L

68003

62366

63860

17

0

16

92958

62376

TR-3
64.856A
2018-108

65269

93278

13.86A
2018-184

609.78A
HARNETT

93277

14.50A
2018-184

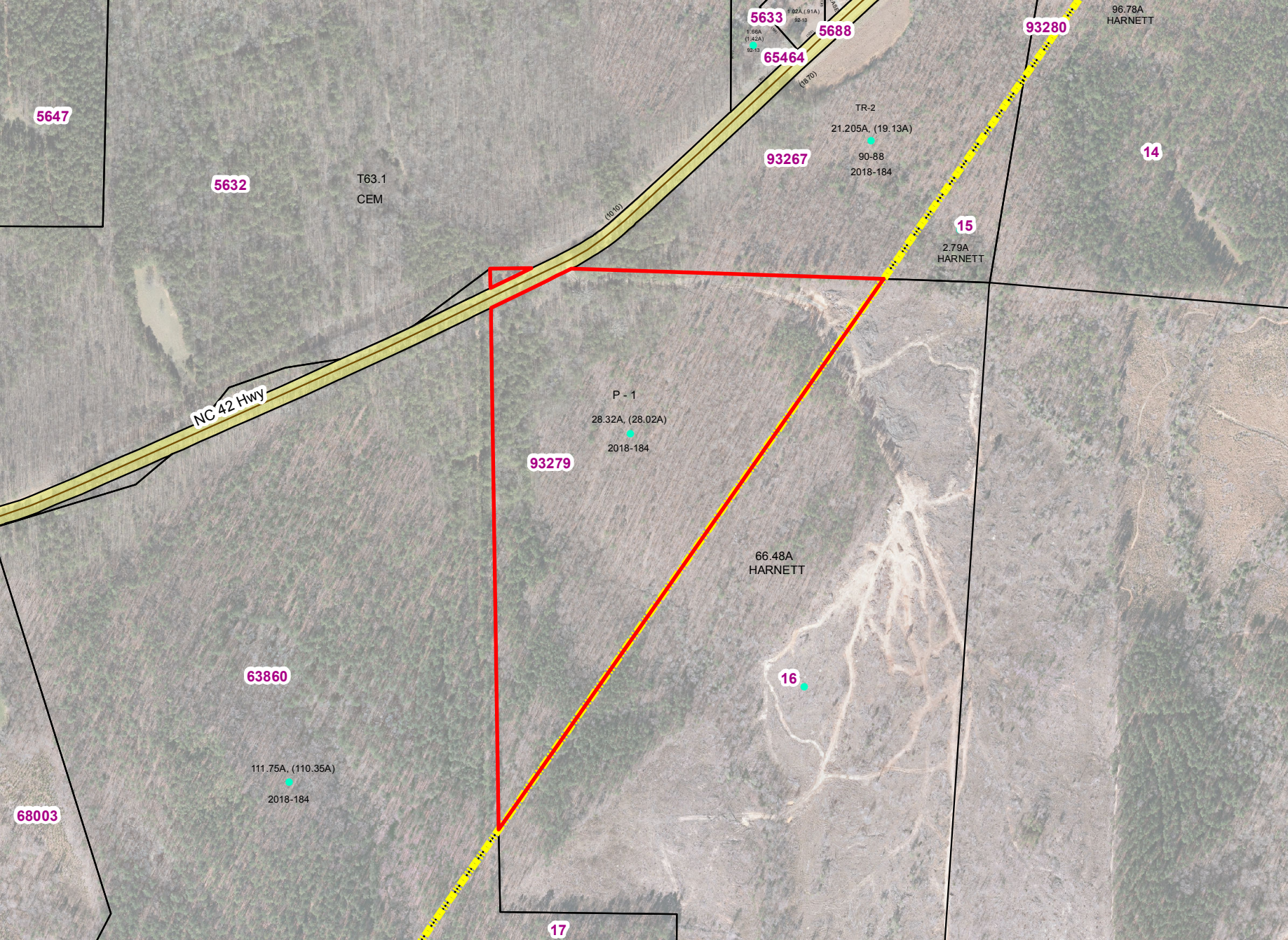
140.426A
HARNETT

18

19

62371

20



5647

5632

T63.1
CEM

5633

5688

65464

93267

TR-2
21.205A, (19.13A)
90-88
2018-184

93280

96.78A
HARNETT

14

NC 42 Hwy

(60'10)

15

2.79A
HARNETT

P - 1
28.32A, (28.02A)
2018-184

93279

66.48A
HARNETT

16

63860

111.75A, (110.35A)
2018-184

68003

17



83015

5649

93281

81271

12

5646

2
367.06
2.429A, (2.252A)
2014-244

81270

7.541A, (7.20A)

90379

90-88
2018-184

90380

8.212A
HARNETT

90381

2.414A, (2.317A)
2014-244
773.58

93266

13

90382

2.602A, (2.506A)
2014-244
785.53

93260

NC 42 Hwy

13

5688

TR-2
2.958A, (2.691A)
92-13

2.02A, (1.62A)

2018-184

93280

LT-2

96.78A
HARNETT

5633

30' R/W EASE

65464

2A, (.91A)
92-13

93267

TR-2

21.205A, (19.13A)

90-88

2018-184

15

14

Truth Rd

251.21

447.2

453.01

142.05

140.08

60

675

1870

31.96

367.06

(328)

2004-175

492.63

1

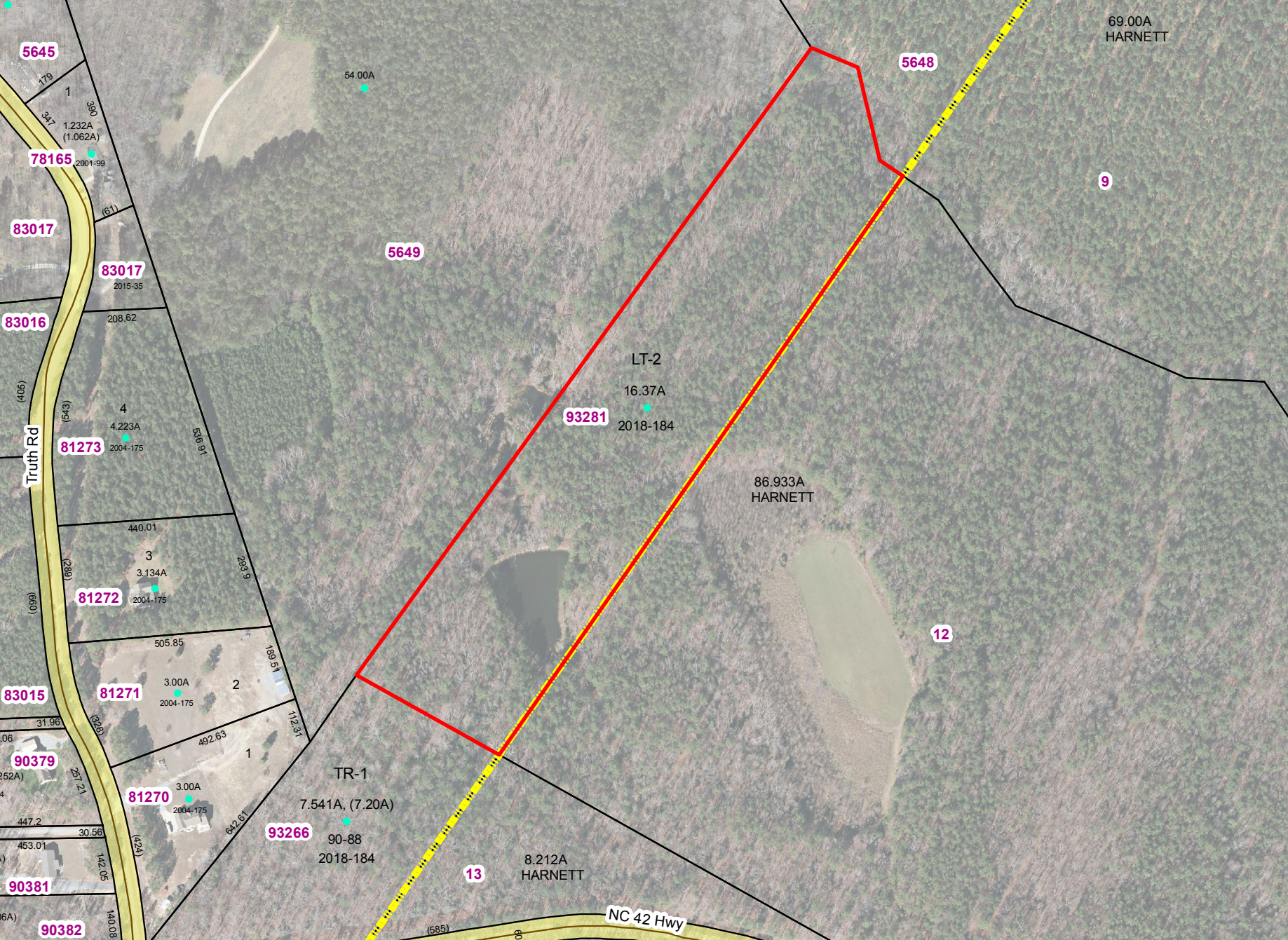
112.31

642.61

(585)

60

1720



5645

78165

83017

83016

83015

90379

90381

90382

83017

81273

81272

81271

81270

93266

5649

93281

13

5648

12

9

69.00A
HARNETT

86.933A
HARNETT

8.212A
HARNETT

TR-1

LT-2

16.37A

2018-184

7.541A, (7.20A)

90-88

2018-184

Truth Rd

NC 42 Hwy

179
7
347
1.232A
(1.062A)

54.00A

(6.1)

208.62

4
4.223A

440.01

505.85

3.00A

3.00A

447.2

463.01

140.08

536.91

263.9

1.6951

1.1217

492.63

842.91

(585)

80