



Established 1771

CHATHAM COUNTY COMMISSIONERS

Mike Dasher, Chair
Diana Hales, Vice Chair
Jim Crawford
Karen Howard
Andy Wilkie

COUNTY MANAGER

Dan LaMontagne

P. O. Box 1809, Pittsboro, NC 27312-1809 • Phone: (919) 542-8200

Resolution of the Chatham County Board of Commissioners

ADOPTING A CONSISTENCY STATEMENT FOR THE APPROVAL OF

Multiple General Use Rezoning

WHEREAS, the Chatham County Board of Commissioners has considered a request by the Chatham County Board of Commissioners to rezone parcels as described in the Attachments, and finds that the amendment is consistent with the comprehensive plan of Chatham County, Plan Chatham, and finds that the same is reasonable and public interests are furthered; and

WHEREAS, The request for the rezoning of the 9 listed parcels is consistent with the comprehensive plan of Chatham County, Plan Chatham, by supporting the diversification of the tax base and generation of more high-quality, in-county jobs to reduce dependence on residential property taxes, create economic opportunity and reduce out-commuting. Specifically, this request supports Land Use Policy #7, Strategy 7.2 which encourages support for “rezonings for businesses uses or properties made non-conforming by the extension of zoning in 2016.”

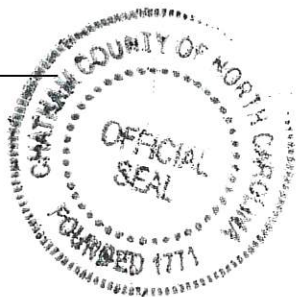
NOW, THEREFORE, BE IT RESOLVED, by the Board of Commissioners of Chatham County, for the reasons set forth above, the Amendment and presented documentation are found to be consistent with the comprehensive plan of Chatham County, Plan Chatham, and are determined to be reasonable and in the public interest.

Adopted, this the 21 day of October, 2019.

Mike Dasher, Chairman
Chatham County Board of Commissioners

ATTEST:

Lindsay K. Ray, NCCCC, Clerk to the Board
Chatham County Board of Commissioners



Proposed Rezoning of Parcel 3111

— Road Centerlines

Proposed Rezoning Class

 Heavy Industrial

 Light Industrial

 Neighborhood Business

Prepared by the
Chatham County
Planning Department



GIS DATA DISCLAIMER
FOR CHATHAM COUNTY NC



Information contained herein is provided for informational purposes only. The County of Chatham provides geographic information systems (GIS) data, maps, and metadata with no claim as to the completeness, usefulness, or accuracy of its content, positional or otherwise. The user hereby acknowledges that the Geographic Information System (GIS) data contained on this site are subject to constant change and that its accuracy cannot be guaranteed. The County and its officials and employees make no warranty, express or implied, and assume no legal liability or responsibility for the ability of users to fulfill their intended purposes in accessing or using GIS data or metadata or for omissions in content regarding such data. The data on this site could include technical inaccuracies and typographical errors. Independent verification of all data contained herein should be made by the user. The data on this site is presented "as is," without warranty of any kind, including but not limited to, merchantability, fitness for a particular purpose, or non-infringement. Your use and hereof is limited to no obligation to assist the user in the use of such data or in the development, use, or maintenance of any applications applied to or associated with the data or metadata.



Proposed Rezoning of Parcels

3242/3243/3238

— Road Centerlines

Proposed Rezoning Class

- Heavy Industrial
- Light Industrial
- Neighborhood Business

Prepared by the
Chatham County
Planning Department



GIS DATA DISCLAIMER
FOR CHATHAM COUNTY NC



Information contained herein is provided for informational purposes only. The County of Chatham provides geographic information systems (GIS) data, maps, and metadata with no claim as to the completeness, usefulness, or accuracy of its content, positional or otherwise. The user hereby acknowledges that the Geographic Information System (GIS) data contained on this site are subject to constant change and that its accuracy cannot be guaranteed. The County and its officials and employees make no warranty, express or implied, and assume no legal liability or responsibility for the ability of users to fulfill their intended purposes in accessing or using GIS data or metadata or for omissions in content regarding such data. The data on this site could include technical inaccuracies and typographical errors. Independent verification of all data contained herein should be made by the user. The data on this site is presented "as is," without warranty of any kind, including but not limited to, the implied warranties of merchantability, fitness for a particular purpose, or non-infringement. Your use and access to it, the County assumes no obligation to assist the user in the use of such data or in the development, use, or maintenance of any applications applied to or associated with the data or metadata.



Proposed Rezoning of Parcels 60305 & 4794

— Road Centerlines

Proposed Rezoning Parcels

REZONED

- Heavy Industrial
- Light Industrial
- Neighborhood Business

Prepared by the
Chatham County
Planning Department



GIS DATA DISCLAIMER
FOR CHATHAM COUNTY, NC



Information contained herein is provided for informational purposes only. The County of Chatham provides geographic information systems (GIS) data, maps, and metadata with no claim as to the completeness, usefulness, or accuracy of its content, positional or otherwise. The user hereby acknowledges that the Geographic Information System (GIS) data contained on this site are subject to constant change and that its accuracy cannot be guaranteed. The County and its officials and employees make no warranty, express or implied, and assume no legal liability or responsibility for the ability of users to fulfill their intended purposes in accessing or using GIS data or metadata or for omissions in content regarding such data. The data on this site could include technical inaccuracies and typographical errors. Independent verification of all data contained herein should be performed. No warranty is made by the County of Chatham as to the accuracy, timeliness, or any kind, including, but not limited to, the accuracy of merchantability, fitness for a particular purpose, or non-infringement. Your use of the data is your responsibility. This site is at your own risk. In providing this data or access to it, the County assumes no obligation to assist the user in the use of such data or in the development, use, or maintenance of any applications applied to or associated with the data or metadata.



Proposed Rezoning of Parcel 3416

— Road Centerlines

Proposed Rezoning Class

-  Heavy Industrial
-  Light Industrial
-  Neighborhood Business

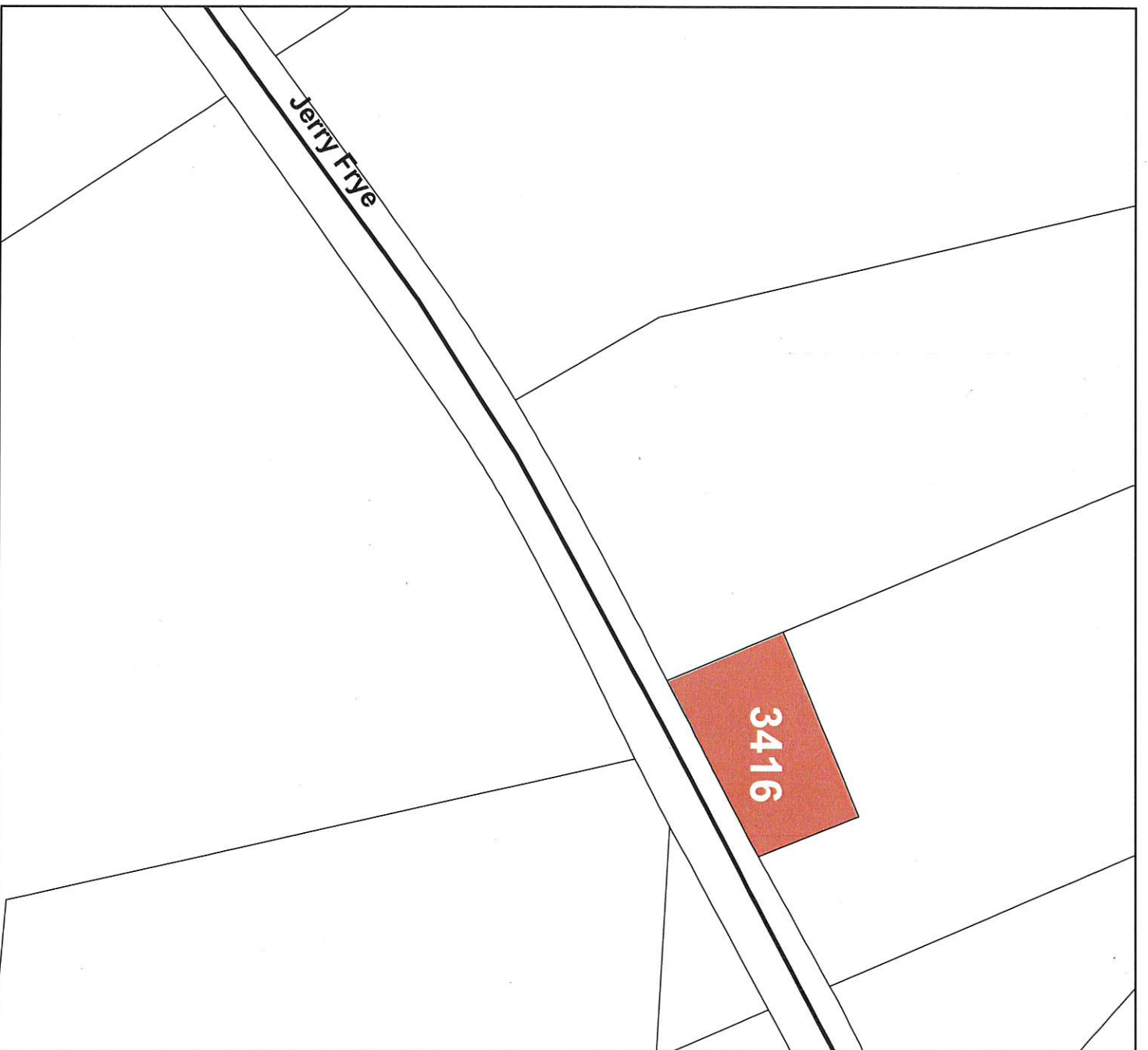
Prepared by the
Chatham County
Planning Department



GIS DATA DISCLAIMER
FOR CHATHAM COUNTY, NC



Information contained herein is provided for informational purposes only. The County of Chatham provides geographic information systems (GIS) data, maps, and metadata with no claim as to the completeness, usefulness, or accuracy of its content, positional or otherwise. The user hereby acknowledges that the Geographic Information System (GIS) data contained on this site are subject to constant change and that its accuracy cannot be guaranteed. The County and its officials and employees make no warranty, express or implied, and assume no legal liability or responsibility for the ability of users to fulfill their intended purposes in accessing or using GIS data or metadata or for omissions in content regarding such data. The data on this site could include technical inaccuracies and typographical errors. Independent verification of all data contained herein should be made by the user. The data on this site is presented "as is," without warranty of any kind, including the implied warranties of merchantability, fitness for a particular purpose, or non-infringement. You assume the responsibility for the maintenance of this site is at your own risk. In providing this data or access to it, the County assumes no obligation to assist the user in the use of such data or in the development, use, or maintenance of any applications applied to or associated with the data or metadata.



Proposed Rezoning of Parcel 14836

— Road Centerlines

Proposed Rezoning Class

-  Heavy Industrial
-  Light Industrial
-  Neighborhood Business

Prepared by the
Chatham County
Planning Department



GIS DATA DISCLAIMER
FOR CHATHAM COUNTY, NC



Information contained herein is provided for informational purposes only. The County of Chatham provides geographic information systems (GIS) data, maps, and metadata with no claim as to the completeness, usefulness, or accuracy of its content, positional or otherwise. The user hereby acknowledges that the Geographic Information System (GIS) data contained on this site are subject to constant change and that its accuracy cannot be guaranteed. The County and its officials and employees make no warranty, express or implied, and assume no legal liability or responsibility for the ability of users to fulfill their intended purposes in accessing or using GIS data or metadata or for omissions in content regarding such data. The data on this site could include technical inaccuracies and typographical errors. Independent verification of all data contained herein should be performed by users of the data. The data on this site is presented "as is," without warranty of any kind, express or implied, including the implied warranties of merchantability, fitness for a particular purpose, or non-infringement. You acknowledge that your use of the data on this site is at your own risk. In providing this data or access to it, the County assumes no obligation to assist the user in the use of such data or in the development, use, or maintenance of any applications applied to or associated with the data or metadata.



Approved						
Parcel	Acres	Address	Current Zoning	Future Zoning	City	State
3416	0.500	734 JERRY FRYE RD	R-1 Residential	Neighborhood Business	BENNETT	NC
3238	0.848	3895 CHATHAM ST	R-1 Residential	Neighborhood Business	BENNETT	NC
3111	0.110	55 W Raleigh ST	R-1 Residential	Neighborhood Business	Bennett	NC
3242	0.115	BENNETT SILER CITY RD	R-1 Residential	Neighborhood Business	BENNETT	NC
3243	0.115	3814 CHATHAM ST	R-1 Residential	Neighborhood Business	BENNETT	NC
8378	1.000	15 OREN GAINES RD	R-1 Residential	Neighborhood Business	GOLDSTON	NC
4794	1.440	82 BONLEE BENNETT RD	R-1 Residential	Neighborhood Business	SILER CITY	NC
60305	15.270	94 BONLEE BENNETT RD	R-1 Residential	Light Industrial	BONLEE	NC
14836	1.200	178 RUFUS BREWER RD	R-1 Residential	Neighborhood Business	SILER CITY	NC
Approved for LI -Light Industrial						
Parcel	Acres	Address	Current Zoning	Future Zoning	City	State
65032	1.174	1660 ED CLAPP RD	R-5 Residential	Heavy Industrial	SILER CITY	NC
Denied						
Parcel	Acres	Address	Current Zoning	Future Zoning	City	State
10670	8.400	1898 HENDERSON TANYARD	R-1 Residential	Neighborhood Business	PITTSBORO	NC
73009	9.410	1898 HENDERSON TANYARD	R-1 Residential	Neighborhood Business	PITTSBORO	NC
78275	1.056	1939 Henderson Tanyard Rd	R-1 Residential	Neighborhood Business	PITTSBORO	NC