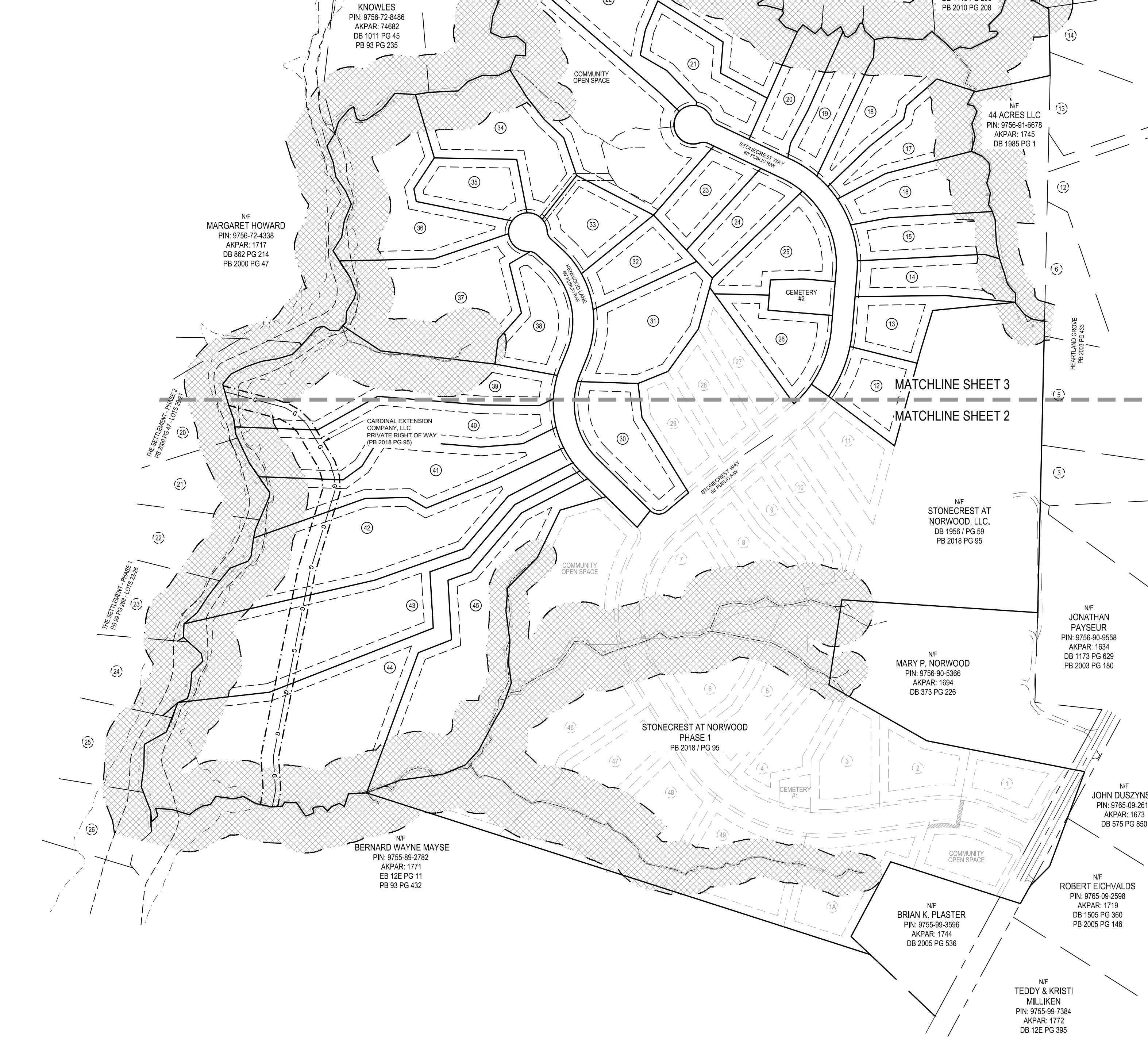


LINE TABLE			LINE TABLE			LINE TABLE		
#	BEARING	LENGTH	#	BEARING	LENGTH	#	BEARING	LENGTH
L1	N01°03'26"W	66.52	L86	N87°45'39"W	42.22	L171	S33°55'53"E	45.46
L2	N01°13'17"W	122.62	L87	S67°34'17"W	45.74	L172	S88°26'22"E	3.68
L3	N58°31'01"W	8.10	L88	S46°20'50"W	39.31	L173	N67°59'43"E	19.31
L4	N61°08'55"W	41.40	L89	S87°02'27"W	83.37	L174	N36°08'40"E	4.36
L5	N89°20'21"W	6.57	L90	S80°55'24"W	39.02	L175	N19°16'31"W	9.07
L6	N18°56'18"W	23.37	L91	N86°43'56"W	58.55	L176	N42°13'30"E	5.84
L7	S89°47'47"W	26.58	L92	S39°25'52"W	58.01	L177	N82°54'40"E	25.02
L8	S60°38'37"W	43.26	L93	S55°36'43"W	52.06	L178	S43°17'34"E	19.66
L9	S18°54'13"W	39.88	L94	S75°36'57"W	18.23	L179	N41°43'20"E	17.17
L10	S44°42'45"W	49.56	L95	N50°11'21"W	13.84	L180	N66°31'36"E	24.30
L11	S06°56'44"E	19.04	L96	N14°46'00"W	34.34	L181	S57°44'27"E	16.97
L12	N88°06'40"E	18.95	L97	S60°08'01"W	14.85	L182	N18°05'34"E	38.02
L13	S44°08'40"E	7.20	L98	S40°27'04"W	46.05	L183	N86°55'58"E	51.90
L14	S33°28'29"W	11.37	L99	S17°44'20"W	35.44	L184	S46°38'37"E	75.03
L15	S63°51'41"W	37.10	L100	S32°04'26"W	42.48	L186	S29°30'38"W	59.19
L16	S63°37'56"W	44.02	L101	S21°26'42"E	49.21	L187	S44°43'26"W	77.10
L17	N79°41'05"W	29.78	L102	S09°25'05"E	41.96	L188	N79°15'14"W	44.19
L18	S62°10'06"W	23.10	L103	S34°31'03"E	51.17	L189	N77°46'32"E	5.50
L19	N43°31'05"W	29.11	L104	S23°10'13"E	39.22	L190	S27°22'00"W	39.87
L20	N49°56'18"W	52.62	L105	S22°39'51"W	51.81	L191	S67°14'33"E	17.88
L21	S49°01'00"W	35.65	L106	S09°07'09"W	47.11	L192	S30°36'51"E	18.82
L22	N87°15'19"W	44.21	L107	S32°26'25"W	45.94	L193	S21°44'53"W	38.72
L23	N85°01'09"W	56.88	L108	S32°29'43"E	93.49	L194	S14°05'38"E	37.86
L24	S79°22'28"W	37.21	L109	S20°25'29"E	44.50	L195	S15°00'00"W	42.04
L25	N47°19'23"W	36.59	L110	S19°55'59"W	19.13	L196	S65°32'30"E	34.10
L26	N16°05'56"W	23.59	L111	S30°52'29"W	40.32	L197	S45°15'59"E	27.14
L27	N80°52'04"W	7.34	L112	S03°43'14"W	31.37	L198	S07°48'06"E	23.64
L28	S28°31'29"W	27.67	L113	S41°39'54"W	31.32	L199	S15°18'37"E	35.72
L29	S53°33'02"W	25.72	L114	N88°50'14"W	24.22	L200	S20°25'58"E	29.24
L30	N70°43'21"W	9.05	L115	N55°44'41"W	21.14	L201	S08°19'09"W	34.66
L31	N25°20'17"W	29.85	L116	S80°00'14"W	20.14	L202	S31°31'44"E	16.72
L32	S54°43'37"W	45.03	L117	S40°58'40"W	67.60	L203	S19°41'30"E	5.21
L33	N40°18'03"W	29.82	L118	S45°12'28"W	36.38	L204	S19°41'30"E	24.07
L34	S46°32'38"W	24.03	L119	S73°45'18"W	44.71	L205	S02°54'11"E	27.73
L35	N53°23'22"W	42.72	L120	S80°56'17"W	45.53	L206	S03°19'31"E	40.45
L36	S38°36'14"W	25.38	L121	S70°42'01"W	47.84	L207	S11°39'10"E	44.96
L37	N68°24'40"W	36.97	L122	S64°06'26"W	47.10	L208	S18°21'21"E	39.16
L38	N42°02'48"W	27.90	L123	S38°47'54"W	37.50	L209	S16°30'44"E	35.78
L39	N36°46'19"E	23.03	L124	S15°27'11"E	22.03	L210	S38°14'17"E	26.38
L40	N23°36'42"W	10.04	L125	S16°06'44"E	40.78	L211	S48°22'20"E	9.42
L41	N74°46'59"W	50.85	L126	S19°57'15"E	42.59	L212	S00°12'01"W	25.63
L42	S84°29'03"W	15.58	L127	S07°23'18"E	42.36	L213	S00°12'01"W	3.03
L43	N72°52'08"W	3.84	L128	S25°18'54"E	91.32	L214	S38°16'51"E	39.77
L44	N14°29'49"W	6.31	L129	S34°35'35"E	102.74	L215	S58°01'37"E	25.22
L45	N59°12'27"E	29.20	L130	S10°16'52"W	13.50	L216	S48°44'19"W	57.62
L46	N08°49'52"W	14.86	L131	S22°48'53"W	46.25	L217	S57°28'20"W	19.89
L47	N53°10'40"W	21.08	L132	S23°28'11"W	52.37	L218	N33°33'09"W	9.44
L48	N72°16'25"W	43.87	L133	S12°01'40"W	25.72	L219	N40°17'36"E	7.56
L49	S86°19'12"W	31.57	L134	S07°46'21"W	52.56	L220	N27°32'18"W	14.19
L50	N55°31'24"W	14.93	L135	S32°02'20"W	16.65	L221	N21°46'49"E	8.69
L51	N12°54'56"W	18.82	L136	S68°46'40"W	54.52	L222	N12°34'18"E	12.07
L52	N89°45'43"W	11.36	L137	S39°28'02"W	53.02	L223	N06°56'46"E	11.62
L53	S22°10'22"W	21.69	L138	S37°03'29"W	48.79	L224	S78°18'11"E	30.03
L54	N62°32'06"W	10.97	L139	S33°21'54"W	56.34	L225	S34°01'45"W	69.29
L55	N23°45'15"W	30.71	L140	S49°36'00"W	49.37	L226	N57°59'08"E	8.44
L56	N85°22'51"W	37.13	L141	S02°33'34"W	38.64	L227	N45°30'55"W	20.40
L57	S67°15'56"W	18.09	L142	S47°48'56"E	40.22	L228	S34°35'35"E	55.59
L58	N28°06'26"W	15.51	L143	S48°27'17"E	28.20	L229	S34°35'35"E	47.15
L59	N29°49'49"E	34.44	L144	S11°27'28"E	22.49	L230	N07°23'18"W	21.36
L60	N68°51'56"W	30.34	L145	S44°57'01"W	44.28	L231	N07°23'18"W	20.99
L61	N50°53'42"W	42.07	L146	S05°03'34"W	46.89	L232	N41°43'14"E	18.32
L62	N66°48'18"W	49.46	L147	S16°25'09"W	29.88	L233	N41°35'11"E	13.00
L63	N84°29'04"W	39.42	L148	S67°37'24"W	29.50	L234	N32°29'43"W	34.38
L64	N78°00'06"W	43.70	L149	S21°16'23"W	90.25	L235	N32°29'43"W	59.10
L65	N84°53'55"W	52.04	L150	S60°40'14"W	72.36	L236	S25°20'17"E	15.44
L66	N51°11'48"W	41.96	L151	S01°19'36"W	62.31	L237	S25°20'17"E	14.41
L67	N73°36'57"W	32.89	L152	S07°21'00"W	58.85	L238	S41°07'58"W	241.83
L68	N48°53'08"W	26.31	L153	S21°08'08"E	53.24	L239	N40°00'02"W	134.24
L69	N57°28'24"W	44.87	L154	S21°44'13"E	20.29	L240	N32°44'39"W	19.80
L70	N72°44'45"W	52.55	L155	S06°03'29"E	31.63	L241	N32°44'39"W	23.75
L71	S27°09'56"W	44.94	L156	N47°05'53"E	23.77	L242	N25°50'06"E	20.47
L72	S60°38'40"W	35.87	L157	N15°59'16"W	22.60	L243	S75°10'28"E	21.45
L73	S31°56'37"W	85.31	L158	S86°18'02"E	46.36	L244	N41°27'23"E	21.09
L74	S08°14'09"E	43.82	L159	S73°01'57"E	59.67	L245	N64°12'51"E	34.45
L75	S13°53'22"W	37.70	L160	N50°57'02"E	21.82	L246	N73°08'01"E	24.57
L76	S50°50'06"W	47.87	L161	N61°13'57"E	23.10	L247	S79°55'56"E	28.82
L77	S21°30'08"W	104.27	L162	N78°53'37"E	22.98	L248	N08°20'15"E	11.00
L78	S07°56'32"W	47.09	L163	N33°48'34"E	28.04	L249	S10°20'34"W	42.53
L79	S65°58'57"E	36.47	L164	S62°18'41"E	51.35	L250	S64°38'34"E	10.74
L80	N83°19'51"E	41.02	L165	N76°29'44"E	27.65	L251	N83°40'06"E	44.87
L81	S50°37'24"E	34.00	L166	S61°03'58"E	41.60			
L82	S01°19'21"W	34.76	L167	S77°49'12"E	44.78			
L83	N86°26'56"W	27.53	L168	N86°41'01"E	32.09			
L84	S21°31'54"W	45.67	L169	N28°41'38"E	13.36			
L85	S64°52'05"W	38.72	L170	S87°14'58"E	34.17			

CURVE TABLE				
#	RADIUS	LENGTH	CHORD BEARING	CH. LENGTH
C1	280.00'	30.77'	N40°05'39"W	30.76'
C2	280.00'	50.22'	N31°48'27"W	50.15'
C3	280.00'	62.64'	N20°15'38"W	62.51'
C4	280.00'	81.78'	N5°29'06"W	81.49'
C5	280.00'	67.82'	N9°49'15"E	67.66'
C6	280.00'	26.49'	N19°28'13"E	26.48'
C8	220.00'	267.14'	N12°36'21"W	251.03'
C10	35.00'	20.88'	N64°28'46"W	20.57'
C11	35.00'	5.86'	N86°21'37"W	5.85'
C12	55.00'	83.16'	N47°50'16"W	75.46'
C13	55.00'	38.58'	N15°34'23"E	37.79'
C14	55.00'	49.82'	N61°13'04"E	48.13'
C15	55.00'	48.36'	S67°14'33"E	46.82'
C16	55.00'	36.88'	S22°50'30"E	36.20'
C17	35.00'	26.73'	S25°30'40"E	26.09'
C19	280.00'	89.04'	S38°16'54"E	88.67'
C20	280.00'	108.27'	S18°05'38"E	107.60'
C21	280.00'	142.68'	S7°34'55"W	141.15'
C23	220.00'	21.02'	S19°28'34"W	21.02'
C24	220.00'	238.91'	S14°24'19"E	227.34'
C25	35.00'	51.71'	S87°50'25"E	47.13'
C26	320.00'	74.72'	N41°44'33"E	74.55'
C27	380.00'	155.98'	S23°17'41"W	154.87'
C28	320.00'	169.51'	N19°52'39"E	167.54'
C30	270.00'	326.78'	N29°58'13"W	307.20'
C31	270.00'	326.78'	N29°58'13"W	307.20'
C32	35.00'	26.73'	N86°31'25"W	26.09'
C33	55.00'	145.89'	N32°24'55"W	106.73'
C34	55.00'	52.57'	N70°57'21"E	50.99'
C35	55.00'	58.39'	S81°16'18"E	55.85'
C36	35.00'	26.73'	S42°45'43"E	26.09'
C38	330.00'	87.32'	S57°03'45"E	87.06'
C39	330.00'	43.01'	S45°44'54"E	42.98'
C40	330.00'	45.06'	S38°06'11"E	45.02'
C41	330.00'	83.27'	S26°57'48"E	83.05'
C42	330.00'	104.57'	S10°39'23"E	104.14'
C43	330.00'	36.17'	S1°33'43"W	36.15'
C45	380.00'	45.33'	S80°07'10"W	45.30'
C46	55.00'	10.05'	S47°17'09"E	10.03'
C47	55.00'	10.36'	S36°38'48"E	10.36'
C48	55.00'	98.29'	N57°12'25"W	85.72'
C49	55.00'	47.60'	N18°48'56"E	46.13'

SITE AREA TABLE	
GROSS TRACT AREA	3,121,915 SF / 71,669 AC
AREA IN LOTS	2,787,136 SF / 63,984 AC
AREA IN NEW R/W	131,412 SF / 3,016 AC
AREA IN COMMUNITY SPACE	185,950 SF / 4,269 AC
AREA IN OPEN SPACE	17,417 SF / 0,400 AC
TOTAL AREA REMAINING	0 SF / 0.000 AC

STONECREST @ NORWOOD PHASE 2
NUMBER OF LOTS = 31
LARGEST LOT #44 = 266,593 SF / 6,120 AC
SMALLEST LOT #23 = 40,209 SF / 0,923 AC
AVERAGE LOT SIZE = 89,864 SF / 2,063 AC
TOTAL AREA TO BE SUBDIVIDED = 3,121,915 SF / 71,669 AC



LINE / HATCH LEGEND	
---	PROPERTY LINE
---	PROPERTY LINE NOT SURVEYED
---	EASEMENT LINE
---	SETBACK LINE
---	GAS LINE
---	RIPARIAN BUFFER LINE
---	100YR FLOOD LINE (ZONE AE)
---	FLOODWAY
---	CREEK CENTERLINE
---	RIGHT OF WAY
---	BMP MAINTENANCE EASEMENT
---	BMP OUTLINE
---	SHEET MATCHLINE
---	STREAM BANK(TYP.)
---	RIPARIAN BUFFER HATCH

SYMBOL LEGEND	
▲	COMPUTED POINT
●	PROPERTY CORNER FOUND
○	PROPERTY CORNER SET

I, JAMIE SHANE STRICKLAND CERTIFY THAT THIS PLAT WAS DRAWN UNDER MY SUPERVISION FROM AN ACTUAL SURVEY MADE UNDER MY SUPERVISION RECORDED IN BOOK _____ PAGE _____ THAT THE BOUNDARIES NOT SURVEYED ARE CLEARLY INDICATED AS DASHED LINES DRAWN FROM INFORMATION FOUND IN BOOK _____ THAT THE RATIO OF PRECISION AS CALCULATED IS 1:_____. THAT THIS PLAT WAS PREPARED IN ACCORDANCE WITH G.S. 47-30 AS AMENDED. WITNESS MY ORIGINAL SIGNATURE, REGISTRATION NUMBER AND SEAL THIS _____ DAY OF _____ A.D., 2019.

PRELIMINARY PLAT
NOT FOR RECORDATION, CONVEYANCES OR SALES
 JAMIE SHANE STRICKLAND, PLS L-4669

I, JAMIE SHANE STRICKLAND, CERTIFY THAT THIS SURVEY CREATES A SUBDIVISION OF LAND WITHIN THE AREA OF A COUNTY OR MUNICIPALITY THAT HAS AN ORDINANCE THAT REGULATES PARCELS OF LAND.

PRELIMINARY PLAT

