

VICINITY MAP
NTS

DRAWING INDEX:

- C1.1 COVER SHEET
- C2.2 EXISTING CONDITIONS PLAN
- C3.1 SITE LAYOUT PLAN
- C3.3 CONCEPT PLAN (COLOR)
- C4.1 GRADING & STORM DRAINAGE PLAN
- C6.1 UTILITY PLAN
- C8.1 LANDSCAPE PLAN
- C10.1 SITE LIGHTING PLAN

501 LANDING APPEARANCE COMMISSION

Chatham County, North Carolina

SITE DATA:

DEVELOPER/APPLICANT: PITT HILL X, LLC
50201 GOVERNORS DRIVE
CHAPEL HILL, NC 27517
PHONE: (919) 883-5500
CONTACT: CHRIS EHRENFELD

PROJECT: SHOPPING CENTER
AKPAR: 2721
PARCEL ACREAGE: 5.01 ACRES
CURRENT ZONING: ZONE R-1
PROPOSED ZONING: CD-NB
OVERLAY ZONING: NONE
RIVER BASIN: HAW RIVER BASIN

PLAN CHATHAM
FUTURE LAND USE
DESIGNATION: CHATHAM DOWNS
COMMUNITY CENTER

PROJECT DENSITY: 14,400 SF
BUILDING SETBACKS
REQUIRED: 50' FRONT
20' SIDE
20' REAR

MAXIMUM BUILDING
HEIGHT: 60'

PRE-DEVELOPMENT
IMPERVIOUS SURFACE: 0.24 ACRES (4.82%)
POST DEVELOPMENT
IMPERVIOUS SURFACE: 1.69 ACRES (33.7%)

LEGEND

	NEW	EXISTING
DRAINAGE STRUCTURE	■ □ △	□ ○ △
SANITARY SEWER MANHOLE	⊙	⊙
SANITARY SEWER CLEANOUT	— C.O.	— C.O.
WATER VALVE	⊙	⊙
FIRE HYDRANT	⊙	⊙
OVERHEAD UTILITY LINE	— OH —	— XOH —
UNDERGROUND ELECTRIC LINE	— E —	— XE —
UNDERGROUND TELECOM/DATA LINE	— TD —	— XTD —
FIBER OPTIC CABLE	— FO —	— XFO —
GAS LINE	— G —	— XG —
STORM DRAINAGE PIPE	— SD —	— XSD —
SANITARY SEWER LINE	— SS —	— XSS —
WATER LINE	— W —	— XW —
SURFACE ELEVATION CONTOUR	— 400 —	— 400 —
SURFACE SPOT ELEVATION	⊕ 356.44	⊕ 356.44
CLEARING LIMIT/TREE LINE	— — —	— — —
LIMIT OF DISTURBANCE	— — —	— — —
ROOF DRAIN	— RD —	— RD —
ELECTRICAL TRANSFORMER PAD	⊕	⊕
TYPICAL KEYED NOTE LABEL	1	1

REV.	DATE	DESCRIPTION

DATE: SEPTEMBER 10, 2019

THIS DRAWING AND THE DESIGN HEREON ARE THE PROPERTY OF CIVIL CONSULTANTS, INC. THE INFORMATION ON THIS DRAWING IS NOT FOR USE ON ANY OTHER SITE OR PROJECT. THE REPRODUCTION OR OTHER USE OF THIS DRAWING IN WHOLE OR IN PART, WITHOUT WRITTEN CONSENT OF CIVIL CONSULTANTS, INC., IS PROHIBITED.

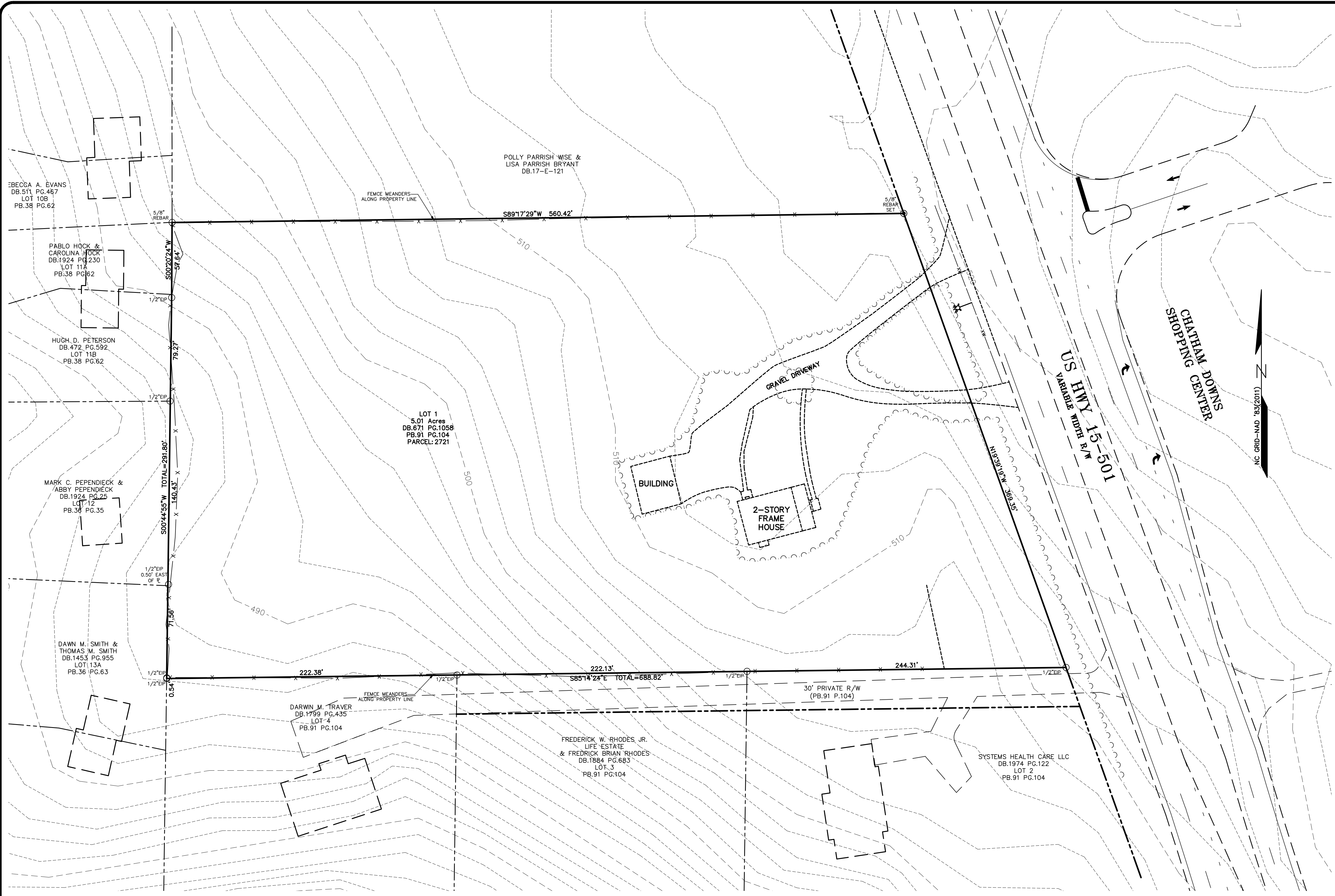
COPYRIGHT 2019 CIVIL CONSULTANTS, INC.

SHEET NO.
C1.1



Know what's below.
Call before you dig.
(Or call: 1-800-632-4949)

**PRELIMINARY
DO NOT USE FOR
CONSTRUCTION**



501 LANDING
 CHATHAM COUNTY, NORTH CAROLINA
 EXISTING CONDITIONS &
 DEMOLITION PLAN

REV.	DATE	DESCRIPTION

DATE: SEPTEMBER 16, 2019

THIS DRAWING AND THE DESIGN HEREON ARE THE PROPERTY OF CIVIL CONSULTANTS, INC. THE INFORMATION ON THIS DRAWING IS NOT FOR USE ON ANY OTHER SITE OR PROJECT. THE REPRODUCTION OR OTHER USE OF THIS DRAWING IN WHOLE OR IN PART, WITHOUT WRITTEN CONSENT OF CIVIL CONSULTANTS, INC. IS PROHIBITED.

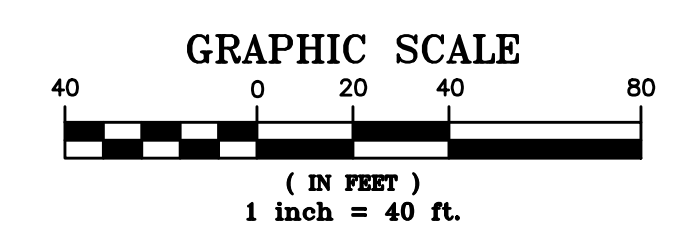
COPYRIGHT 2019 CIVIL CONSULTANTS, INC.

SHEET NO.
C2.2



Know what's below.
 Call before you dig.
 (Or call: 1-800-632-4949)

PRELIMINARY
 DO NOT USE FOR
 CONSTRUCTION





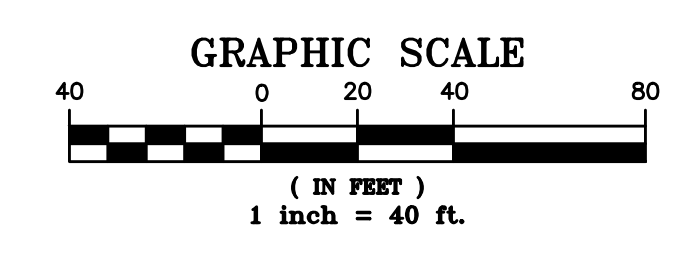
501 LANDING
 CHATHAM COUNTY, NORTH CAROLINA
 CONCEPT
 PLAN

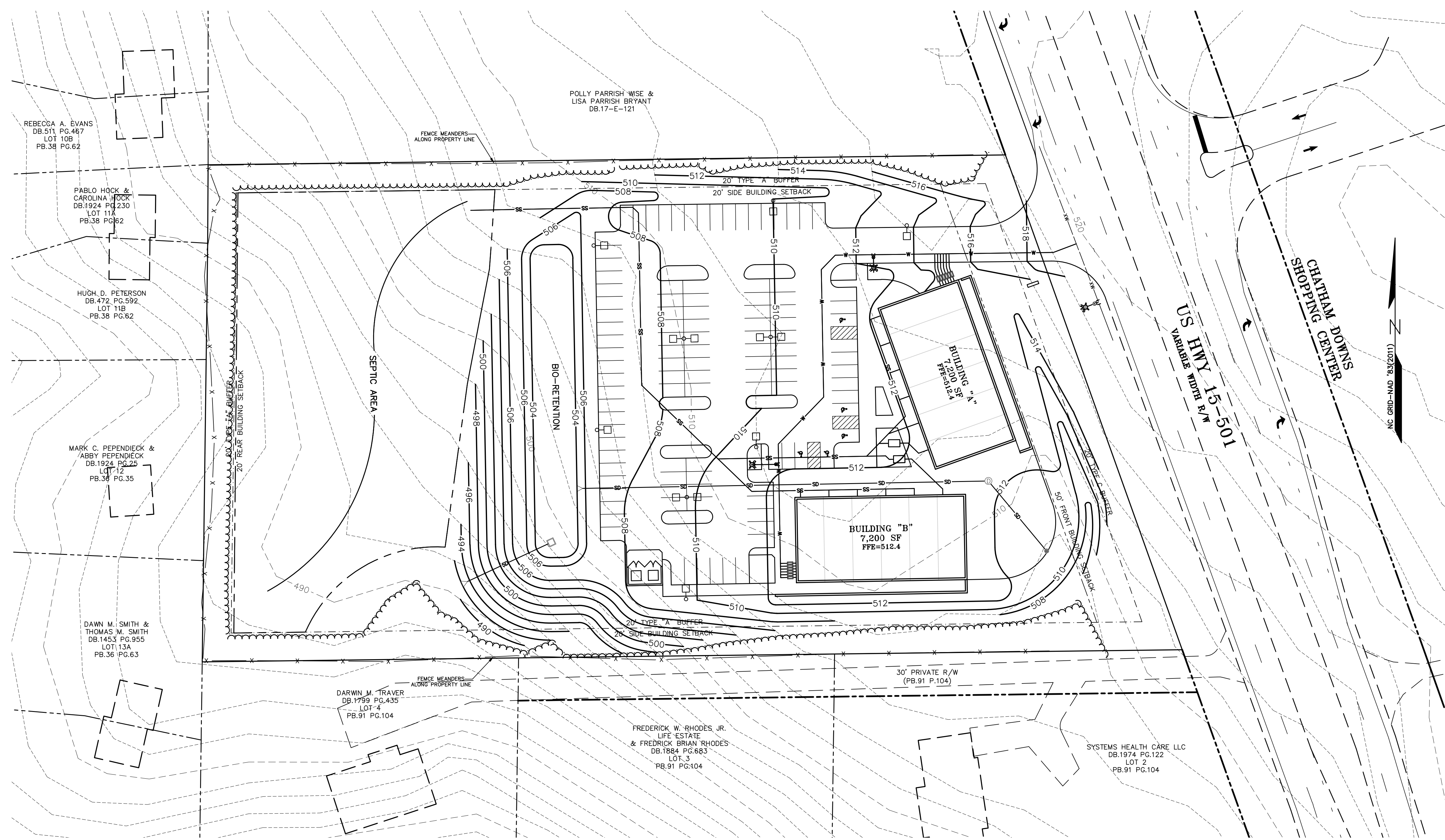
REV.	DATE	DESCRIPTION

DATE: SEPTEMBER 16, 2019
 THIS DRAWING AND THE DESIGN HEREON ARE THE PROPERTY OF CIVIL CONSULTANTS, INC. THE INFORMATION ON THIS DRAWING IS NOT FOR USE ON ANY OTHER SITE OR PROJECT. THE REPRODUCTION OR OTHER USE OF THIS DRAWING IN WHOLE OR IN PART, WITHOUT WRITTEN CONSENT OF CIVIL CONSULTANTS, INC. IS PROHIBITED.

**PRELIMINARY
 DO NOT USE FOR
 CONSTRUCTION**

ILLUSTRATIVE PURPOSES





501 LANDING
 CHATHAM COUNTY, NORTH CAROLINA
GRADING & STORM DRAINAGE PLAN

REV.	DATE	DESCRIPTION

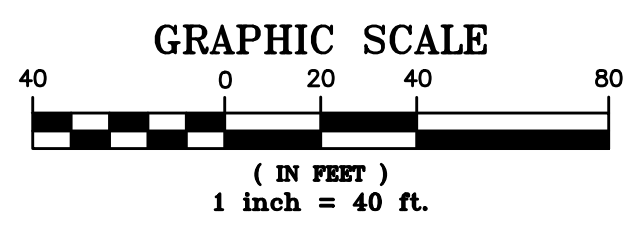
DATE: SEPTEMBER 16, 2019
 THIS DRAWING AND THE DESIGN HEREON ARE THE PROPERTY OF CIVIL CONSULTANTS, INC. THE INFORMATION ON THIS DRAWING IS NOT FOR USE ON ANY OTHER SITE OR PROJECT. THE REPRODUCTION OR OTHER USE OF THIS DRAWING IN WHOLE OR IN PART, WITHOUT WRITTEN CONSENT OF CIVIL CONSULTANTS, INC. IS PROHIBITED.
 COPYRIGHT 2019 CIVIL CONSULTANTS, INC.

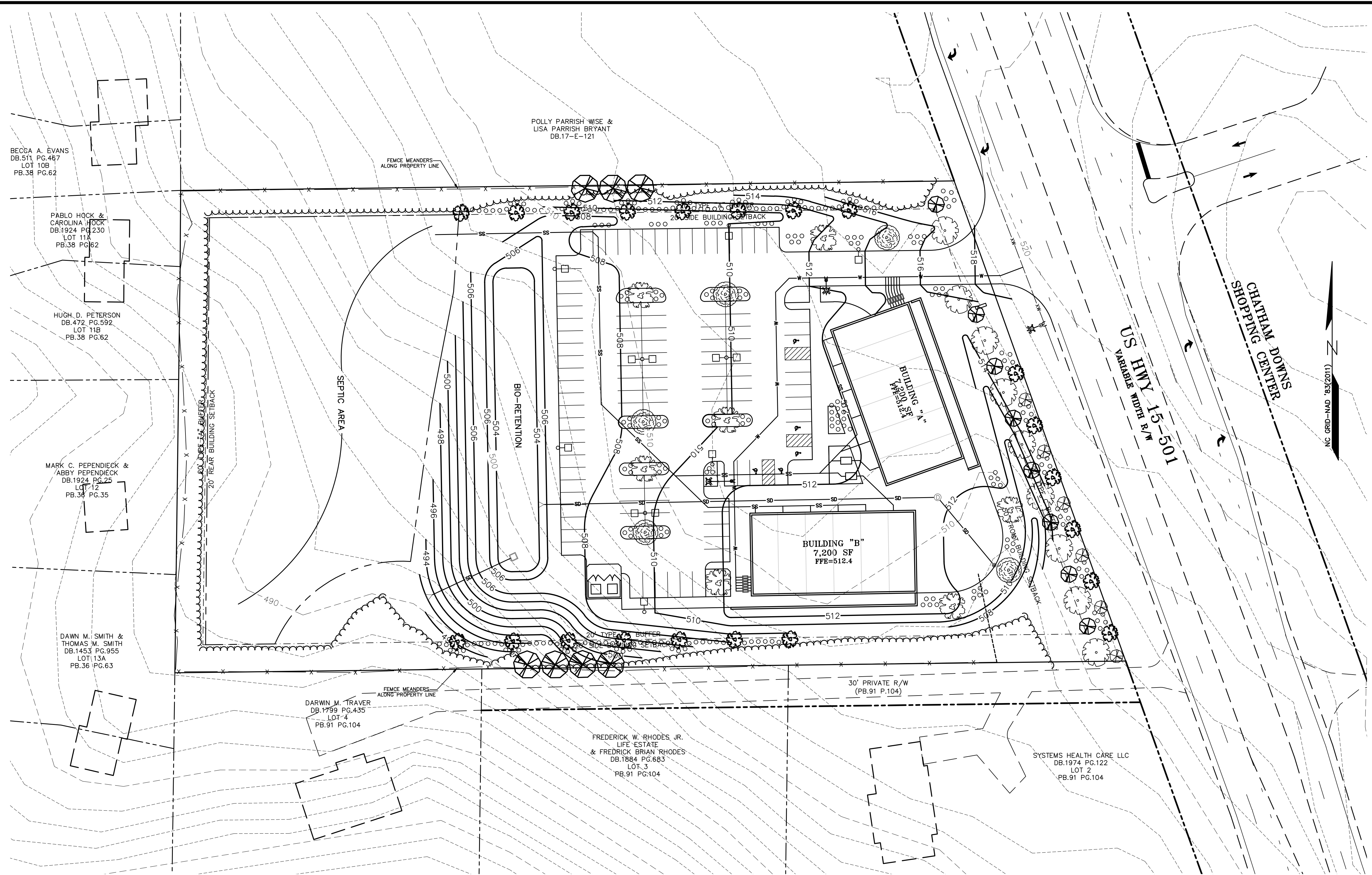
SHEET NO.
C4.1



Know what's below.
 Call before you dig.
 (Or call: 1-800-632-4949)

**PRELIMINARY
 DO NOT USE FOR
 CONSTRUCTION**





501 LANDING
CHATHAM COUNTY, NORTH CAROLINA
UTILITY PLAN

REV.	DATE	DESCRIPTION

DATE: SEPTEMBER 16, 2019

THIS DRAWING AND THE DESIGN HEREON ARE THE PROPERTY OF CIVIL CONSULTANTS, INC. THE INFORMATION ON THIS DRAWING IS NOT FOR USE ON ANY OTHER SITE OR PROJECT. THE REPRODUCTION OR OTHER USE OF THIS DRAWING IN WHOLE OR IN PART, WITHOUT WRITTEN CONSENT OF CIVIL CONSULTANTS, INC. IS PROHIBITED.

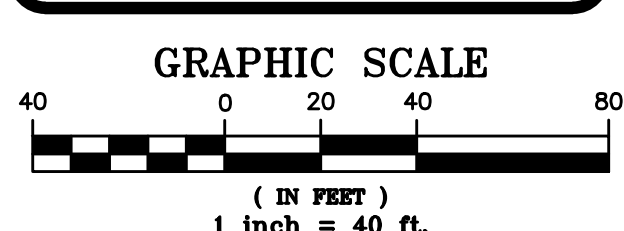
COPYRIGHT 2019 CIVIL CONSULTANTS, INC.

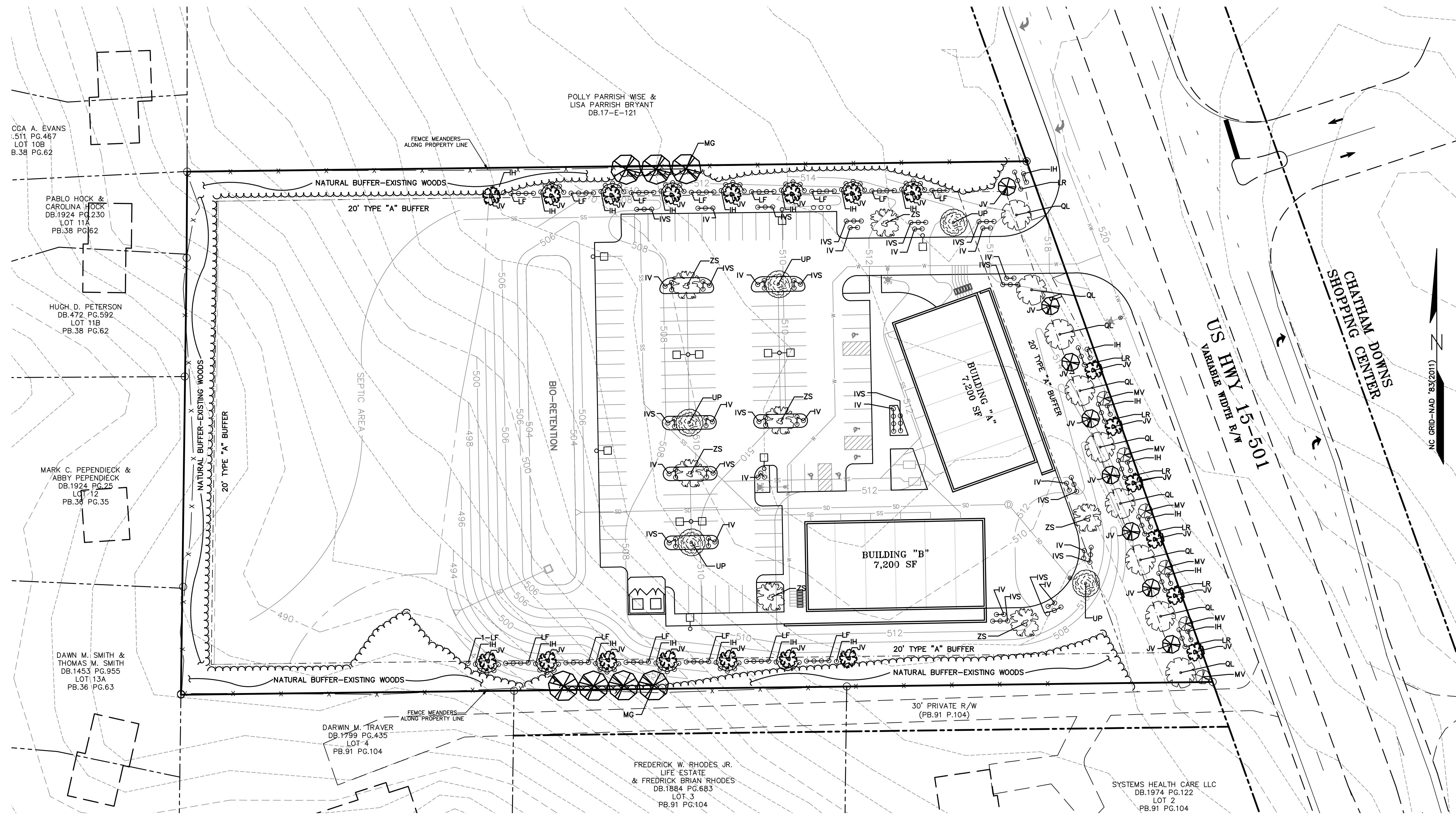
SHEET NO.
C6.1

NOTE:
EASEMENTS SHOWN HEREON SHALL NOT BE USED AS A BASIS FOR A LEGAL DESCRIPTION OR AS AN ATTACHMENT TO A DEED OF EASEMENT.

811
Know what's below.
Call before you dig.
(Or call: 1-800-632-4949)

**PRELIMINARY
DO NOT USE FOR
CONSTRUCTION**



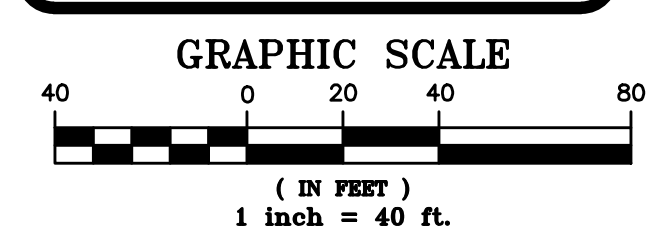


PLANT LIST			
SYMBOL	LOCATION	BOTANICAL NAME	COMMON NAME
TREES			
QP	Street	Quercus phellos	Willow Oak
JV	Buffers A & C	Juniperus virginiana	Eastern Red Cedar
CC	Buffer C	Cercis canadensis 'Forest Pansy'	Eastern Redbud
MG	Buffer A	Magnolia grandiflora 'little gem'	Little Gem Magnolia
MV	Buffer C	Magnolia virginiana	Sweetbay Magnolia
UP	Parking	Ulmus parvifolia	Lacebark Elm
ZS	Parking	Zelkova serrata	Japanese Zelkova
SHRUBS			
LR	Buffer C	Abelia x grandiflora 'Little Richard'	Little Richard Abelia
LF	Buffer A	Loropetalum chinensis sp.	Chinese Fringe-flower
IH	Buffer A & C	Ilex glabra 'Shamrock'	Inkberry Holly
IV	Parking	Ilex vomitoria 'Nana'	Dwarf Yaupon Holly
IVS	Parking	Ilex vomitoria 'Schillings'	Dwarf Yaupon Holly



Know what's below.
Call before you dig.
(Or call: 1-800-632-4949)

**PRELIMINARY
DO NOT USE FOR
CONSTRUCTION**



501 LANDING
CHATHAM COUNTY, NORTH CAROLINA
**LANDSCAPING
PLAN**

REV.	DATE	DESCRIPTION

DATE: SEPTEMBER 16, 2019

THIS DRAWING AND THE DESIGN HEREON ARE THE PROPERTY OF CIVIL CONSULTANTS, INC. THE INFORMATION ON THIS DRAWING IS NOT FOR USE ON ANY OTHER SITE OR PROJECT. THE REPRODUCTION OR OTHER USE OF THIS DRAWING IN WHOLE OR IN PART, WITHOUT WRITTEN CONSENT OF CIVIL CONSULTANTS, INC., IS PROHIBITED.

COPYRIGHT 2019 CIVIL CONSULTANTS, INC.

P:\26005\DWG\26005 landscape.dwg, C8.1 Landscape, 9/16/2019 2:59:33 PM

PROGRESS ENERGY OUTDOOR LIGHTING

LED Roadway

This energy-efficient luminaire is a green solution and great fit for streets, roads, long narrow areas and parking lots. The LED Roadway delivers the light where it is needed while increasing visibility and reducing spill light to adjoining properties. Choose low to medium light output on wood or fiberglass poles (or mount on an existing pole). Available with one to four fixtures per pole, depending on the fixture/pole combination selected.

LED	75	105	215	Watts
	5,050	7,445	13,990	Delivered Lumens*

Mounting Heights 25', 30' or 35'

Color Gray

Poles
 Fiberglass
 Wood
 Metal (special conditions)

*Delivered Lumens—amount of light delivered out of the luminaire (fixture), which is different from non-LED luminaires that utilize lamp lumens (amount of light emitted from a light source).

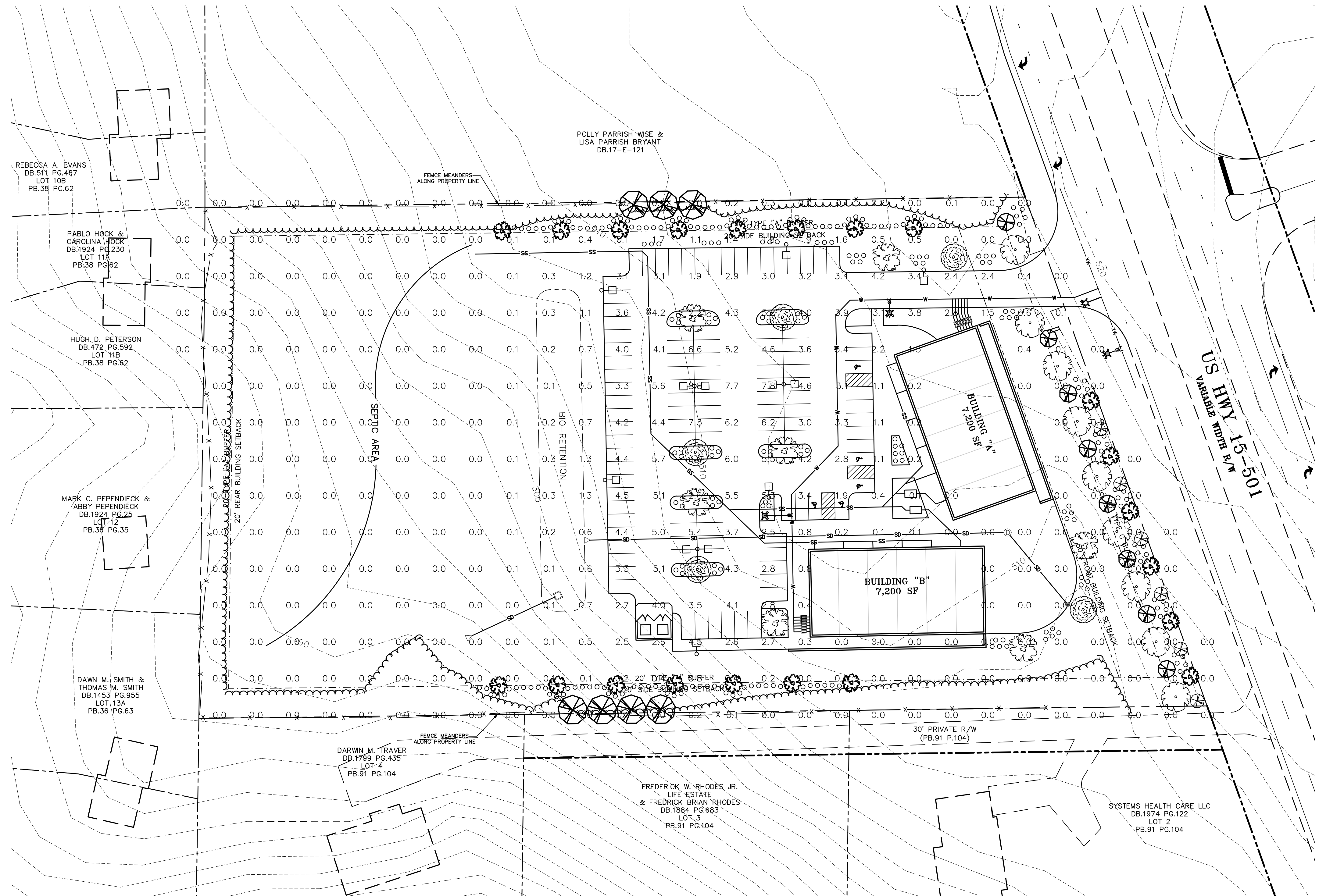


For additional information, visit us at progress-energy.com, e-mail us at lightinginfo@pgnmail.com or call us toll free at 1.877.887.6287.



Note: These fixtures are not stocked by Progress Energy. They must be special-ordered and require up to eight weeks lead time for arrival.

LED Roadway



LIGHTING NOTES:

1. LIGHTS SHOWN ARE 25' MOUNT HEIGHT 250 WATT LED (13,990 LUMENS) FIXTURES. FOOT CANDLE VALUES SHOWN ARE BASED UPON THIS FIXTURE AND MOUNTING HEIGHT.
2. SITE LIGHTING FIXTURES WILL BE LEASED FROM PROGRESS ENERGY.
3. PROPOSED SITE LIGHTING IS PRELIMINARY AND NOT THE FINAL DESIGN FOR THE PROJECT. FINAL DESIGN WILL BE COORDINATED WITH PROGRESS ENERGY BASED UPON THEIR REQUIREMENTS FOR LEASING CONTRACT. FINAL DESIGN WILL BE INCLUDED FOR PERMIT PLAN APPROVAL.

REV.	DATE	DESCRIPTION
1	09/11/2019	COURTESY REVIEW COMMENTS

DATE: SEPTEMBER 16, 2019

THIS DRAWING AND THE DESIGN HEREON ARE THE PROPERTY OF CIVIL CONSULTANTS, INC. THE INFORMATION ON THIS DRAWING IS NOT FOR USE ON ANY OTHER SITE OR PROJECT. THE REPRODUCTION OR OTHER USE OF THIS DRAWING IN WHOLE OR IN PART, WITHOUT WRITTEN CONSENT OF CIVIL CONSULTANTS, INC. IS PROHIBITED.

COPYRIGHT 2019 CIVIL CONSULTANTS, INC.



Know what's below.
 Call before you dig.
 (Or call: 1-800-632-4949)

**PRELIMINARY
 DO NOT USE FOR
 CONSTRUCTION**

