

RESOLUTION OF THE CHATHAM COUNTY BOARD OF COMMISSIONERS AUTHORIZING THE CONVEYANCE OF EASEMENTS AND RIGHT-OF-WAY TO THE NORTH CAROLINA DEPARTMENT OF TRANSPORTATION FOR IMPROVEMENTS TO THE COURTHOUSE CIRCLE AT THE INTERSECTION OF US 64 BUSINESS AND US 15/501 IN PITTSBORO, NORTH CAROLINA.

WHEREAS, the North Carolina Department of Transportation (NCDOT) has plans to make improvements to the courthouse circle at the intersection of US 64 Business and US 15/501 in Pittsboro, North Carolina, which project is identified by NC DOT as project 44237 (the "Project"); and

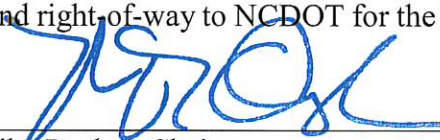
WHEREAS, NCDOT has requested easements and right-of-way over the following County owned properties that will be impacted by the Project, said properties being identified on the attached maps incorporated herein by reference:

- Parcel 004 - Deed recorded in Book AF, Page 399, Chatham County Register of Deeds
- Parcel 007 - Deed recorded in Book AF, Page 399, Chatham County Register of Deeds
- Parcel 011 - Deed recorded in Book 338, Page 138, Chatham County Register of Deeds
- Parcel 012 - Deed recorded in Book AF, Page 399, Chatham County Register of Deeds
- Parcel 013 - Deed recorded in Book 626, Page 10, Chatham County Register of Deeds
- Parcel 017 - Deed recorded in Book AF, Page 399, Chatham County Register of Deeds

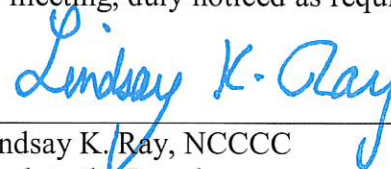
WHEREAS, the conveyance of the easements and right-of-way will allow NCDOT contractors to work outside the existing right-of-way to make the required improvements for the benefit of the citizens and residents of Chatham County and the motoring public;

NOW, THEREFORE, BE IT RESOLVED by the Chatham County Board of Commissioners that the donation of the above requested easements and right-of-way to NCDOT for Project 44237 is hereby approved;

FURTHER RESOLVED, that the County Manager be, and he is, authorized to execute such instruments as are necessary to convey the easements and right-of-way to NCDOT for the Project.

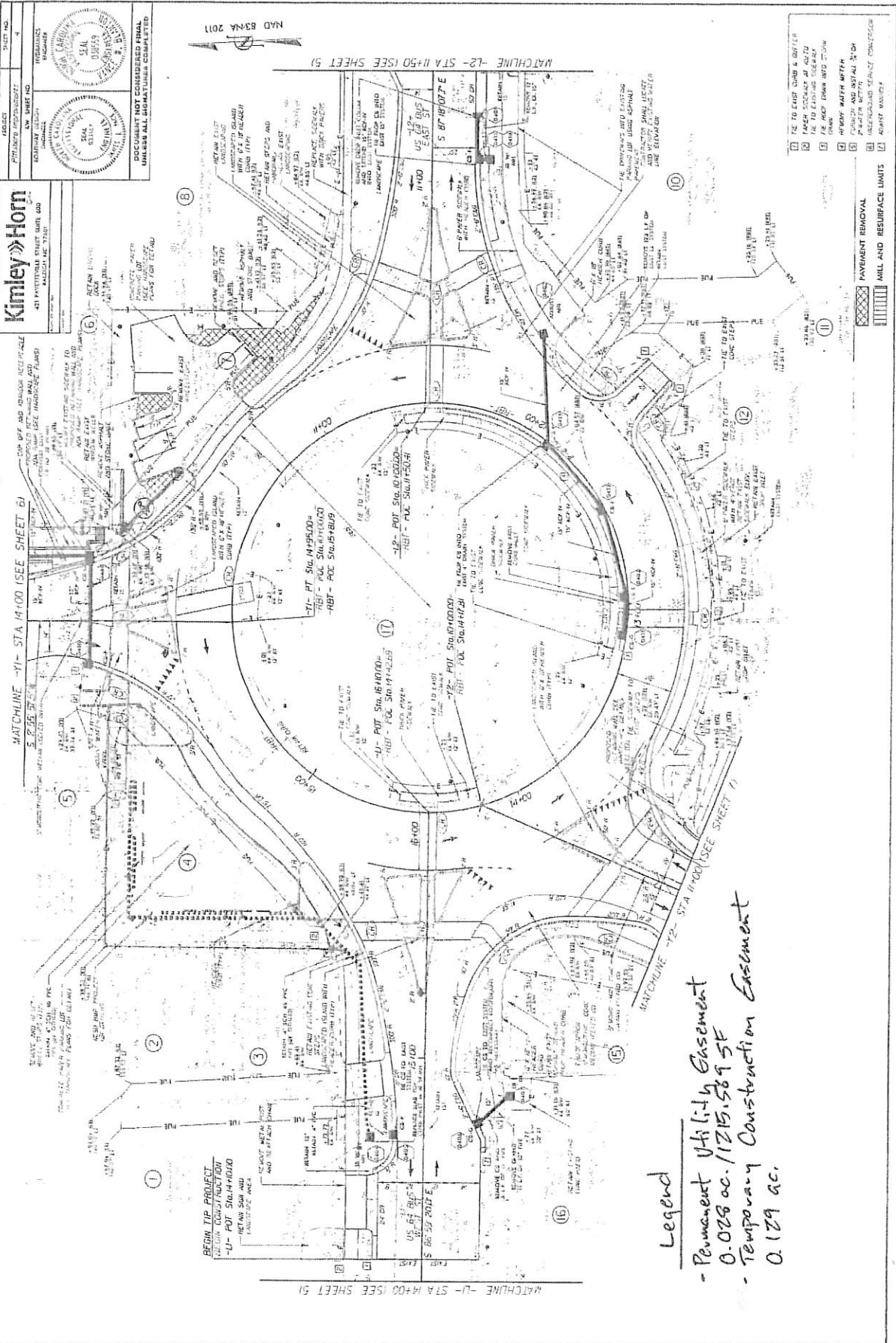

Mike Dasher, Chairman
Chatham County Board of Commissioners

I, Lindsay K. Ray, hereby certify that the above and foregoing Resolution was adopted by the Chatham County Board of Commissioners at a regular meeting, duly noticed as required by law, held on the 15th day of July, 2019.


Lindsay K. Ray, NCCCC
Clerk to the Board
Chatham County Board of Commissioners



Parcel 004 Chatham County



Kimley-Horn
 431 PAVEMENTS STREET SUITE 100
 RALEIGH, NC 27607

PROJECT: PAVEMENT RECONSTRUCTION
 PROJECT NO: 100-1000
 COUNTY: CHATHAM
 SHEET NO: 100-1000-01

DESIGNED BY: [Signature]
 CHECKED BY: [Signature]
 DATE: 08/15/11

PROPOSED WORK SHALL BE CONSIDERED FINAL UNLESS ALL DIMENSIONS COMPLETED

Legend

- Permanent Utility Easement
 0.028 ac. / 1215.56 sq ft
- Temporary Construction Easement
 0.129 ac.

- 1. TO EXIST CURB & GUTTER
- 2. PAVED SIDEWALK AT INTERSECTION
- 3. TO EXIST SIDEWALK
- 4. TO EXIST DRIVEWAY
- 5. TO EXIST DRIVEWAY
- 6. TO EXIST DRIVEWAY
- 7. TO EXIST DRIVEWAY
- 8. TO EXIST DRIVEWAY
- 9. TO EXIST DRIVEWAY
- 10. TO EXIST DRIVEWAY
- 11. TO EXIST DRIVEWAY
- 12. TO EXIST DRIVEWAY
- 13. TO EXIST DRIVEWAY
- 14. TO EXIST DRIVEWAY
- 15. TO EXIST DRIVEWAY
- 16. TO EXIST DRIVEWAY
- 17. TO EXIST DRIVEWAY
- 18. TO EXIST DRIVEWAY
- 19. TO EXIST DRIVEWAY
- 20. TO EXIST DRIVEWAY
- 21. TO EXIST DRIVEWAY
- 22. TO EXIST DRIVEWAY
- 23. TO EXIST DRIVEWAY
- 24. TO EXIST DRIVEWAY
- 25. TO EXIST DRIVEWAY
- 26. TO EXIST DRIVEWAY
- 27. TO EXIST DRIVEWAY
- 28. TO EXIST DRIVEWAY
- 29. TO EXIST DRIVEWAY
- 30. TO EXIST DRIVEWAY
- 31. TO EXIST DRIVEWAY
- 32. TO EXIST DRIVEWAY
- 33. TO EXIST DRIVEWAY
- 34. TO EXIST DRIVEWAY
- 35. TO EXIST DRIVEWAY
- 36. TO EXIST DRIVEWAY
- 37. TO EXIST DRIVEWAY
- 38. TO EXIST DRIVEWAY
- 39. TO EXIST DRIVEWAY
- 40. TO EXIST DRIVEWAY
- 41. TO EXIST DRIVEWAY
- 42. TO EXIST DRIVEWAY
- 43. TO EXIST DRIVEWAY
- 44. TO EXIST DRIVEWAY
- 45. TO EXIST DRIVEWAY
- 46. TO EXIST DRIVEWAY
- 47. TO EXIST DRIVEWAY
- 48. TO EXIST DRIVEWAY
- 49. TO EXIST DRIVEWAY
- 50. TO EXIST DRIVEWAY
- 51. TO EXIST DRIVEWAY
- 52. TO EXIST DRIVEWAY
- 53. TO EXIST DRIVEWAY
- 54. TO EXIST DRIVEWAY
- 55. TO EXIST DRIVEWAY
- 56. TO EXIST DRIVEWAY
- 57. TO EXIST DRIVEWAY
- 58. TO EXIST DRIVEWAY
- 59. TO EXIST DRIVEWAY
- 60. TO EXIST DRIVEWAY
- 61. TO EXIST DRIVEWAY
- 62. TO EXIST DRIVEWAY
- 63. TO EXIST DRIVEWAY
- 64. TO EXIST DRIVEWAY
- 65. TO EXIST DRIVEWAY
- 66. TO EXIST DRIVEWAY
- 67. TO EXIST DRIVEWAY
- 68. TO EXIST DRIVEWAY
- 69. TO EXIST DRIVEWAY
- 70. TO EXIST DRIVEWAY
- 71. TO EXIST DRIVEWAY
- 72. TO EXIST DRIVEWAY
- 73. TO EXIST DRIVEWAY
- 74. TO EXIST DRIVEWAY
- 75. TO EXIST DRIVEWAY
- 76. TO EXIST DRIVEWAY
- 77. TO EXIST DRIVEWAY
- 78. TO EXIST DRIVEWAY
- 79. TO EXIST DRIVEWAY
- 80. TO EXIST DRIVEWAY
- 81. TO EXIST DRIVEWAY
- 82. TO EXIST DRIVEWAY
- 83. TO EXIST DRIVEWAY
- 84. TO EXIST DRIVEWAY
- 85. TO EXIST DRIVEWAY
- 86. TO EXIST DRIVEWAY
- 87. TO EXIST DRIVEWAY
- 88. TO EXIST DRIVEWAY
- 89. TO EXIST DRIVEWAY
- 90. TO EXIST DRIVEWAY
- 91. TO EXIST DRIVEWAY
- 92. TO EXIST DRIVEWAY
- 93. TO EXIST DRIVEWAY
- 94. TO EXIST DRIVEWAY
- 95. TO EXIST DRIVEWAY
- 96. TO EXIST DRIVEWAY
- 97. TO EXIST DRIVEWAY
- 98. TO EXIST DRIVEWAY
- 99. TO EXIST DRIVEWAY
- 100. TO EXIST DRIVEWAY

PAVEMENT REMOVAL
 MILL AND RESURFACE LIMITS

NAD 83-NA 2011

MATCHLINE -11- STA 14+00 (SEE SHEET 51)

MATCHLINE -12- STA 14+50 (SEE SHEET 51)

MATCHLINE -11- STA 14+00 (SEE SHEET 51)

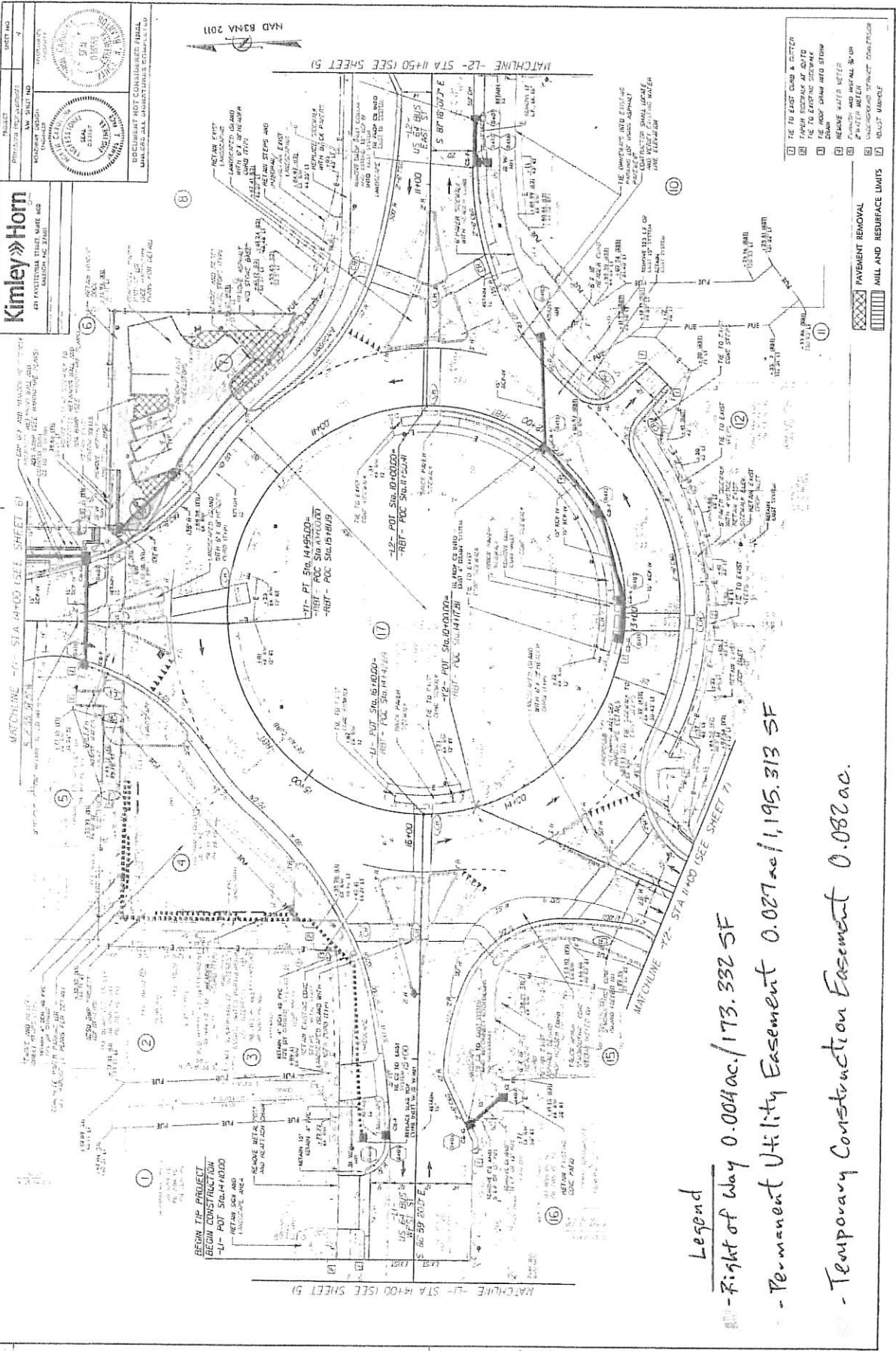
MATCHLINE -12- STA 14+00 (SEE SHEET 51)

BEFORE THE PROJECT
 -U- POT SIGN 14+00
 -U- POT SIGN 14+50
 -U- POT SIGN 15+00
 -U- POT SIGN 15+50
 -U- POT SIGN 16+00
 -U- POT SIGN 16+50
 -U- POT SIGN 17+00
 -U- POT SIGN 17+50
 -U- POT SIGN 18+00
 -U- POT SIGN 18+50
 -U- POT SIGN 19+00
 -U- POT SIGN 19+50
 -U- POT SIGN 20+00
 -U- POT SIGN 20+50
 -U- POT SIGN 21+00
 -U- POT SIGN 21+50
 -U- POT SIGN 22+00
 -U- POT SIGN 22+50
 -U- POT SIGN 23+00
 -U- POT SIGN 23+50
 -U- POT SIGN 24+00
 -U- POT SIGN 24+50
 -U- POT SIGN 25+00
 -U- POT SIGN 25+50
 -U- POT SIGN 26+00
 -U- POT SIGN 26+50
 -U- POT SIGN 27+00
 -U- POT SIGN 27+50
 -U- POT SIGN 28+00
 -U- POT SIGN 28+50
 -U- POT SIGN 29+00
 -U- POT SIGN 29+50
 -U- POT SIGN 30+00
 -U- POT SIGN 30+50
 -U- POT SIGN 31+00
 -U- POT SIGN 31+50
 -U- POT SIGN 32+00
 -U- POT SIGN 32+50
 -U- POT SIGN 33+00
 -U- POT SIGN 33+50
 -U- POT SIGN 34+00
 -U- POT SIGN 34+50
 -U- POT SIGN 35+00
 -U- POT SIGN 35+50
 -U- POT SIGN 36+00
 -U- POT SIGN 36+50
 -U- POT SIGN 37+00
 -U- POT SIGN 37+50
 -U- POT SIGN 38+00
 -U- POT SIGN 38+50
 -U- POT SIGN 39+00
 -U- POT SIGN 39+50
 -U- POT SIGN 40+00
 -U- POT SIGN 40+50
 -U- POT SIGN 41+00
 -U- POT SIGN 41+50
 -U- POT SIGN 42+00
 -U- POT SIGN 42+50
 -U- POT SIGN 43+00
 -U- POT SIGN 43+50
 -U- POT SIGN 44+00
 -U- POT SIGN 44+50
 -U- POT SIGN 45+00
 -U- POT SIGN 45+50
 -U- POT SIGN 46+00
 -U- POT SIGN 46+50
 -U- POT SIGN 47+00
 -U- POT SIGN 47+50
 -U- POT SIGN 48+00
 -U- POT SIGN 48+50
 -U- POT SIGN 49+00
 -U- POT SIGN 49+50
 -U- POT SIGN 50+00
 -U- POT SIGN 50+50
 -U- POT SIGN 51+00
 -U- POT SIGN 51+50
 -U- POT SIGN 52+00
 -U- POT SIGN 52+50
 -U- POT SIGN 53+00
 -U- POT SIGN 53+50
 -U- POT SIGN 54+00
 -U- POT SIGN 54+50
 -U- POT SIGN 55+00
 -U- POT SIGN 55+50
 -U- POT SIGN 56+00
 -U- POT SIGN 56+50
 -U- POT SIGN 57+00
 -U- POT SIGN 57+50
 -U- POT SIGN 58+00
 -U- POT SIGN 58+50
 -U- POT SIGN 59+00
 -U- POT SIGN 59+50
 -U- POT SIGN 60+00
 -U- POT SIGN 60+50
 -U- POT SIGN 61+00
 -U- POT SIGN 61+50
 -U- POT SIGN 62+00
 -U- POT SIGN 62+50
 -U- POT SIGN 63+00
 -U- POT SIGN 63+50
 -U- POT SIGN 64+00
 -U- POT SIGN 64+50
 -U- POT SIGN 65+00
 -U- POT SIGN 65+50
 -U- POT SIGN 66+00
 -U- POT SIGN 66+50
 -U- POT SIGN 67+00
 -U- POT SIGN 67+50
 -U- POT SIGN 68+00
 -U- POT SIGN 68+50
 -U- POT SIGN 69+00
 -U- POT SIGN 69+50
 -U- POT SIGN 70+00
 -U- POT SIGN 70+50
 -U- POT SIGN 71+00
 -U- POT SIGN 71+50
 -U- POT SIGN 72+00
 -U- POT SIGN 72+50
 -U- POT SIGN 73+00
 -U- POT SIGN 73+50
 -U- POT SIGN 74+00
 -U- POT SIGN 74+50
 -U- POT SIGN 75+00
 -U- POT SIGN 75+50
 -U- POT SIGN 76+00
 -U- POT SIGN 76+50
 -U- POT SIGN 77+00
 -U- POT SIGN 77+50
 -U- POT SIGN 78+00
 -U- POT SIGN 78+50
 -U- POT SIGN 79+00
 -U- POT SIGN 79+50
 -U- POT SIGN 80+00
 -U- POT SIGN 80+50
 -U- POT SIGN 81+00
 -U- POT SIGN 81+50
 -U- POT SIGN 82+00
 -U- POT SIGN 82+50
 -U- POT SIGN 83+00
 -U- POT SIGN 83+50
 -U- POT SIGN 84+00
 -U- POT SIGN 84+50
 -U- POT SIGN 85+00
 -U- POT SIGN 85+50
 -U- POT SIGN 86+00
 -U- POT SIGN 86+50
 -U- POT SIGN 87+00
 -U- POT SIGN 87+50
 -U- POT SIGN 88+00
 -U- POT SIGN 88+50
 -U- POT SIGN 89+00
 -U- POT SIGN 89+50
 -U- POT SIGN 90+00
 -U- POT SIGN 90+50
 -U- POT SIGN 91+00
 -U- POT SIGN 91+50
 -U- POT SIGN 92+00
 -U- POT SIGN 92+50
 -U- POT SIGN 93+00
 -U- POT SIGN 93+50
 -U- POT SIGN 94+00
 -U- POT SIGN 94+50
 -U- POT SIGN 95+00
 -U- POT SIGN 95+50
 -U- POT SIGN 96+00
 -U- POT SIGN 96+50
 -U- POT SIGN 97+00
 -U- POT SIGN 97+50
 -U- POT SIGN 98+00
 -U- POT SIGN 98+50
 -U- POT SIGN 99+00
 -U- POT SIGN 99+50
 -U- POT SIGN 100+00
 -U- POT SIGN 100+50

REVISIONS

01/11/2016
 NAD 83-NA 2011
 PROJECT: PAVEMENT RECONSTRUCTION
 PROJECT NO: 100-1000
 COUNTY: CHATHAM
 SHEET NO: 100-1000-01

Parcel 007 Chatham County



Kimley-Horn
 420 PANTHERVILLE STREET, SUITE 400
 KENNESAW, GA 30144
 PHONE: 770.426.1100
 FAX: 770.426.1101
 WWW.KIMLEY-HORN.COM

PROJECT: PAVEMENT RECONSTRUCTION
 CONTRACT NO.: 2010-0000000000
 DRAWING NO.: 2010-0000000000
 DATE: 08/11/2010
 SCALE: AS SHOWN
 SHEET NO.: 4
 TOTAL SHEETS: 4

DESIGNED BY: [Signature]
 CHECKED BY: [Signature]
 IN CHARGE: [Signature]

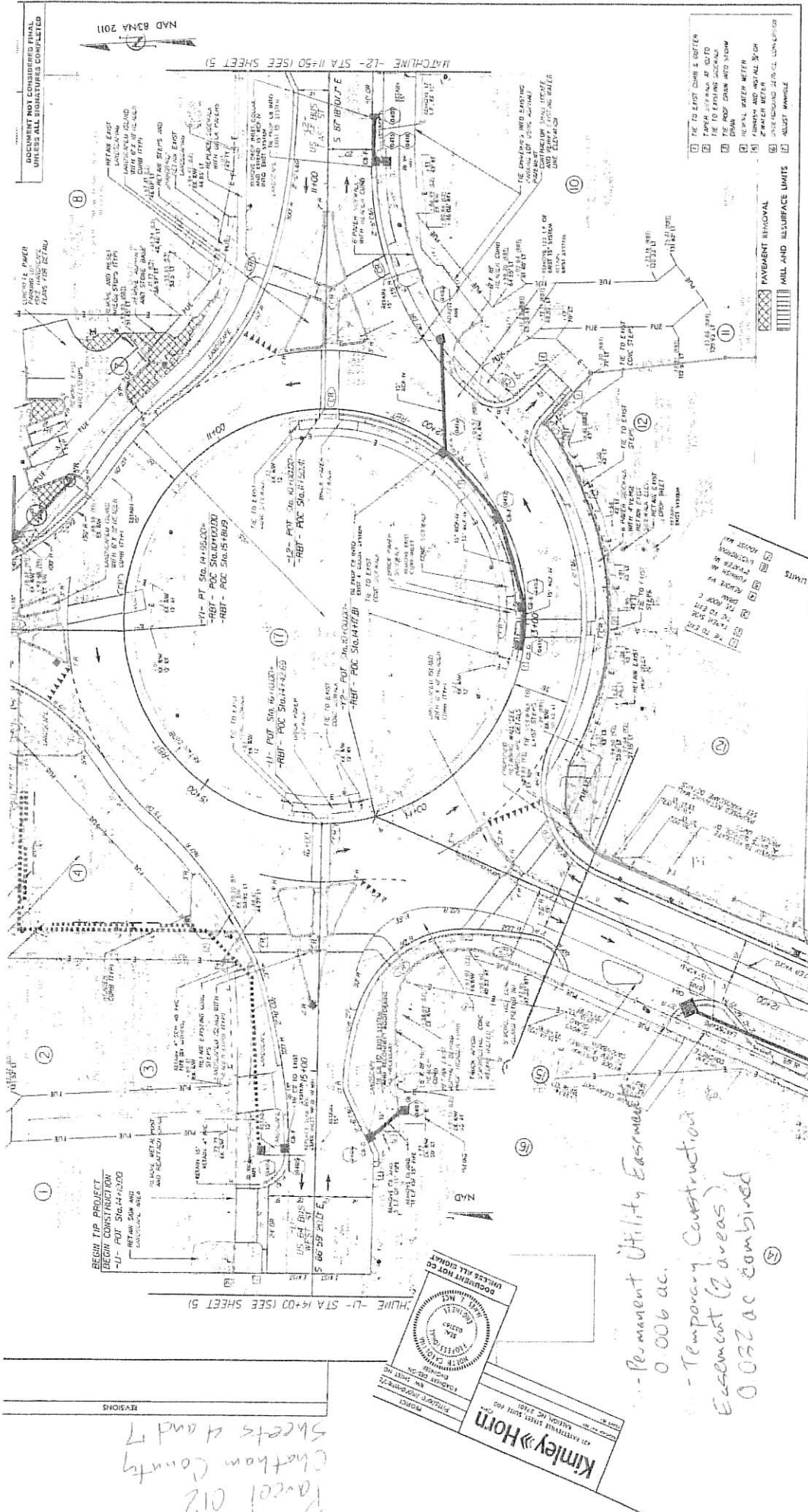
STATE OF GEORGIA
 PROFESSIONAL ENGINEER
 NO. 11511
 EXPIRES: 12/31/2011

STATE OF GEORGIA
 PROFESSIONAL SURVEYOR
 NO. 11511
 EXPIRES: 12/31/2011

DISCLAIMER: NOT TO BE USED FOR ANY OTHER PROJECTS UNLESS SO INDICATED BY THE ENGINEER.

- Legend**
- Right of Way 0.004 ac. / 173.332 SF
 - Permanent Utility Easement 0.027 ac. / 1,195.313 SF
 - Temporary Construction Easement 0.082 ac.

- PAVEMENT REMOVAL
- MILL AND RESURFACE LIMITS
- 1. TO EAST CURB & GUTTER
 - 2. FROM EXISTING AT GUTTER
 - 3. TO EXISTING SIDEWALK
 - 4. TO EXISTING SIDEWALK
 - 5. REMOVE WATER METER
 - 6. REMOVE WATER METER
 - 7. REMOVE WATER METER
 - 8. REMOVE WATER METER
 - 9. REMOVE WATER METER
 - 10. REMOVE WATER METER
 - 11. REMOVE WATER METER
 - 12. REMOVE WATER METER



DOCUMENT NOT CONSIDERED FINAL
UNLESS ALL SIGNATURES COMPLETED

NAD 83/NA 2011

MATCHLINE - L2 - STA 11+50 (SEE SHEET 5)

- 1 TO EAST CURB & GUTTER
- 2 TO EAST CURB & GUTTER
- 3 TO EAST CURB & GUTTER
- 4 TO EAST CURB & GUTTER
- 5 TO EAST CURB & GUTTER
- 6 TO EAST CURB & GUTTER
- 7 TO EAST CURB & GUTTER
- 8 TO EAST CURB & GUTTER
- 9 TO EAST CURB & GUTTER
- 10 TO EAST CURB & GUTTER
- 11 TO EAST CURB & GUTTER
- 12 TO EAST CURB & GUTTER

PAVEMENT REMOVAL
MILL AND SURFACE LIMITS

- 1 TO EAST CURB & GUTTER
- 2 TO EAST CURB & GUTTER
- 3 TO EAST CURB & GUTTER
- 4 TO EAST CURB & GUTTER
- 5 TO EAST CURB & GUTTER
- 6 TO EAST CURB & GUTTER
- 7 TO EAST CURB & GUTTER
- 8 TO EAST CURB & GUTTER
- 9 TO EAST CURB & GUTTER
- 10 TO EAST CURB & GUTTER
- 11 TO EAST CURB & GUTTER
- 12 TO EAST CURB & GUTTER

BEGIN TIP PROJECT
BEGIN CONSTRUCTION
11- STA 14+00.00
12- STA 14+00.00

MATCHLINE - L1 - STA 14+00 (SEE SHEET 5)

Kimley-Horn
INCORPORATED
101 PARKWAY NORTH, SUITE 100
MARIETTA, GEORGIA 30067
PROJECT: [REDACTED]
DATE: [REDACTED]
DRAWN BY: [REDACTED]
CHECKED BY: [REDACTED]
SCALE: [REDACTED]
SHEET NO. [REDACTED]

- Permanent Utility Easement
0.006 ac.
- Temporary Construction
Easement (2 areas)
0.032 ac combined

Parcel 012
Chatham County
Sheets 4 and 7

REVISIONS

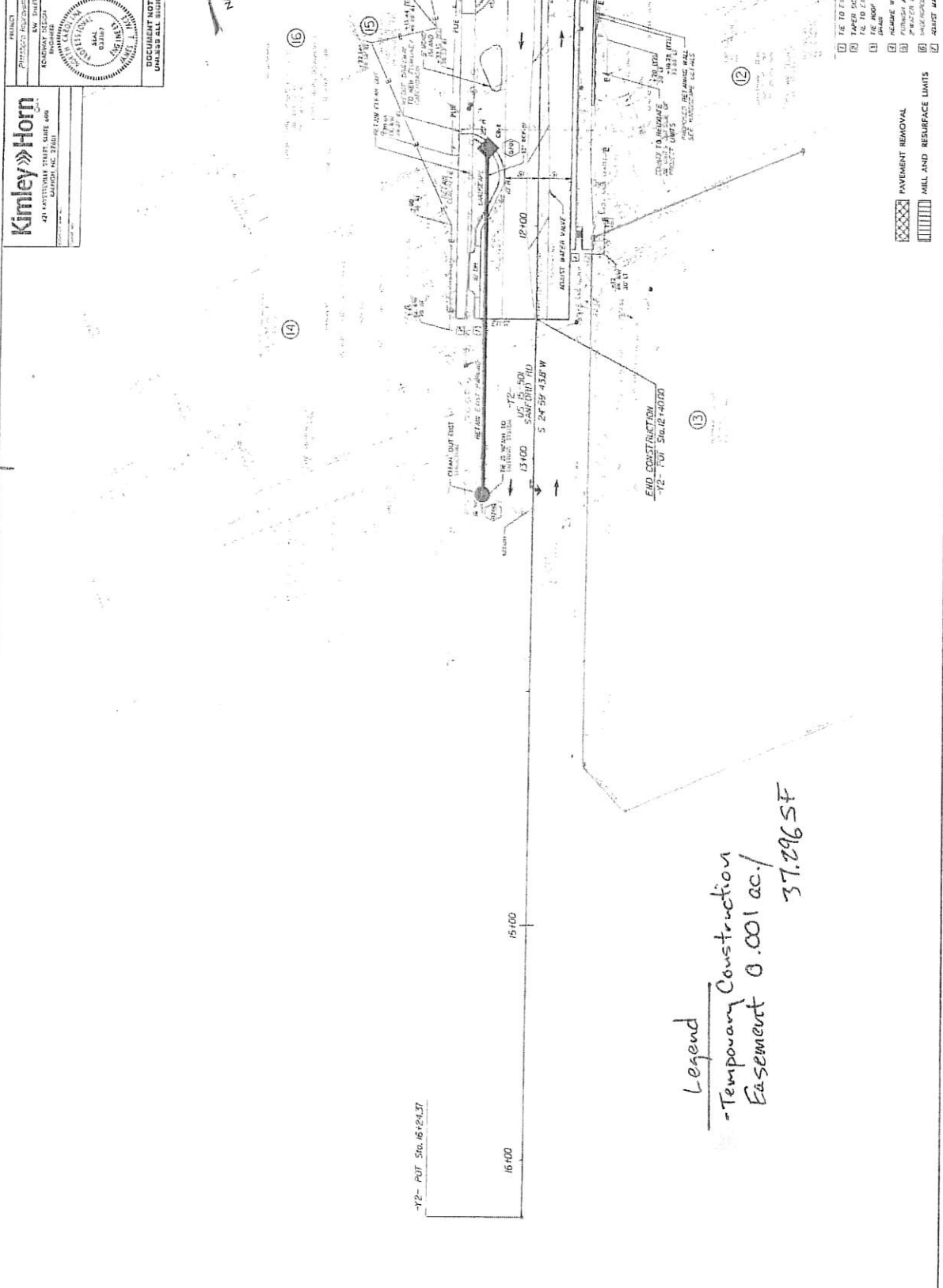
Parcel 013 Chatham County



PROJECT NO. 10011100
 SHEET NO. 7
 CIVIL ENGINEER
 SEALS
 DOCUMENT USE FOR CONSTRUCTION ONLY
 UNLESS ALL INDICATORS COMPLETED

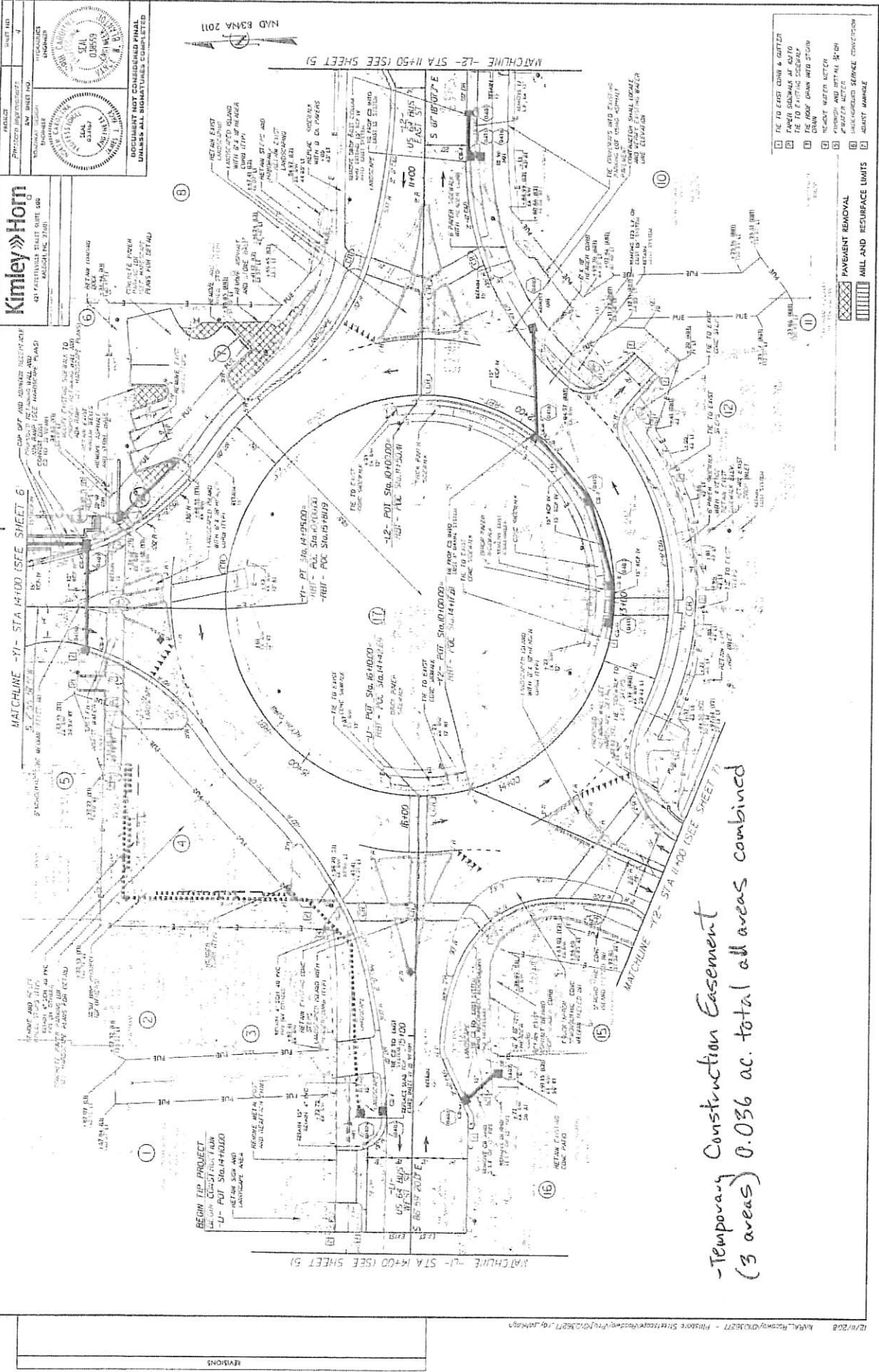


MATCHLINE -Y2- STA 11+00 (SEE SHEET 4)



- 1 TIE TO EXIST CURB & GUTTER
- 2 TAPER SLOPELY AT GUTTO
- 3 TIE TO EXIST SIDEWALK
- 4 FINISH AND INSTALL 2" DIA
- 5 FURNISH AND INSTALL 2" DIA
- 6 PAVEMENT REMOVAL
- 7 MIL AND RESURFACE LIMITS
- 8 ROOF DAMAGE

Parcel 017 Chatham County



-Temporary Construction Easement
(3 areas) 0.036 ac. total all areas combined

Kimley-Horn
401 PATERSON STREET SUITE 400
VALLEJO, CA 94591

PROJECT INFORMATION

PROPOSED IMPROVEMENTS: ROADWAY

DATE: 05/14/10

DESIGNED BY: [Signature]

CHECKED BY: [Signature]

APPROVED BY: [Signature]

SCALE: 1" = 40'

DATE: 05/14/10

PROJECT NO.: 10-0000

CONTRACT NO.: 10-0000

CONTRACT NAME: 10-0000

CONTRACT LOCATION: 10-0000

CONTRACT DRAWING NO.: 10-0000

CONTRACT DATE: 10-0000

CONTRACT SHEET NO.: 10-0000

CONTRACT SHEET TOTAL: 10-0000

CONTRACT SHEET TITLE: 10-0000

CONTRACT SHEET SCALE: 1" = 40'

CONTRACT SHEET DATE: 10-0000

CONTRACT SHEET AUTHOR: 10-0000

CONTRACT SHEET CHECKER: 10-0000

CONTRACT SHEET APPROVER: 10-0000

CONTRACT SHEET DATE: 10-0000

CONTRACT SHEET SCALE: 1" = 40'

CONTRACT SHEET DATE: 10-0000

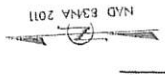
CONTRACT SHEET SCALE: 1" = 40'

CONTRACT SHEET DATE: 10-0000

CONTRACT SHEET SCALE: 1" = 40'

CONTRACT SHEET DATE: 10-0000

CONTRACT SHEET SCALE: 1" = 40'



MATCHLINE -L2- STA 14+50 (SEE SHEET 51)

MATCHLINE -L1- STA 14+00 (SEE SHEET 51)