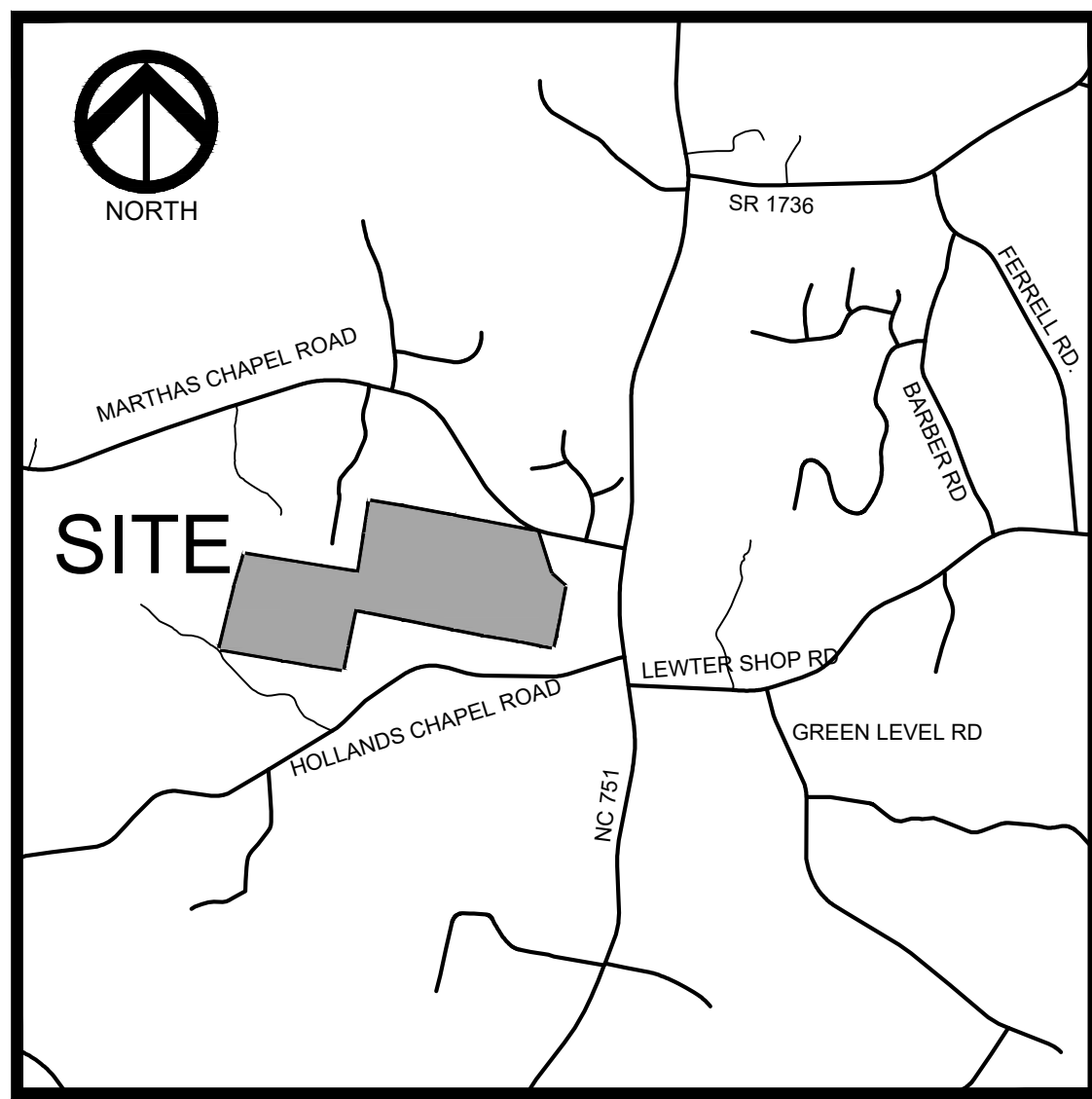




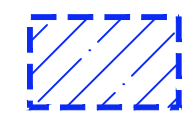
NORTH



SITE

VICINITY MAP

LEGEND:



APPROXIMATE STREAM BUFFERS



PROPOSED WATER QUALITY PONDS

STREAMS

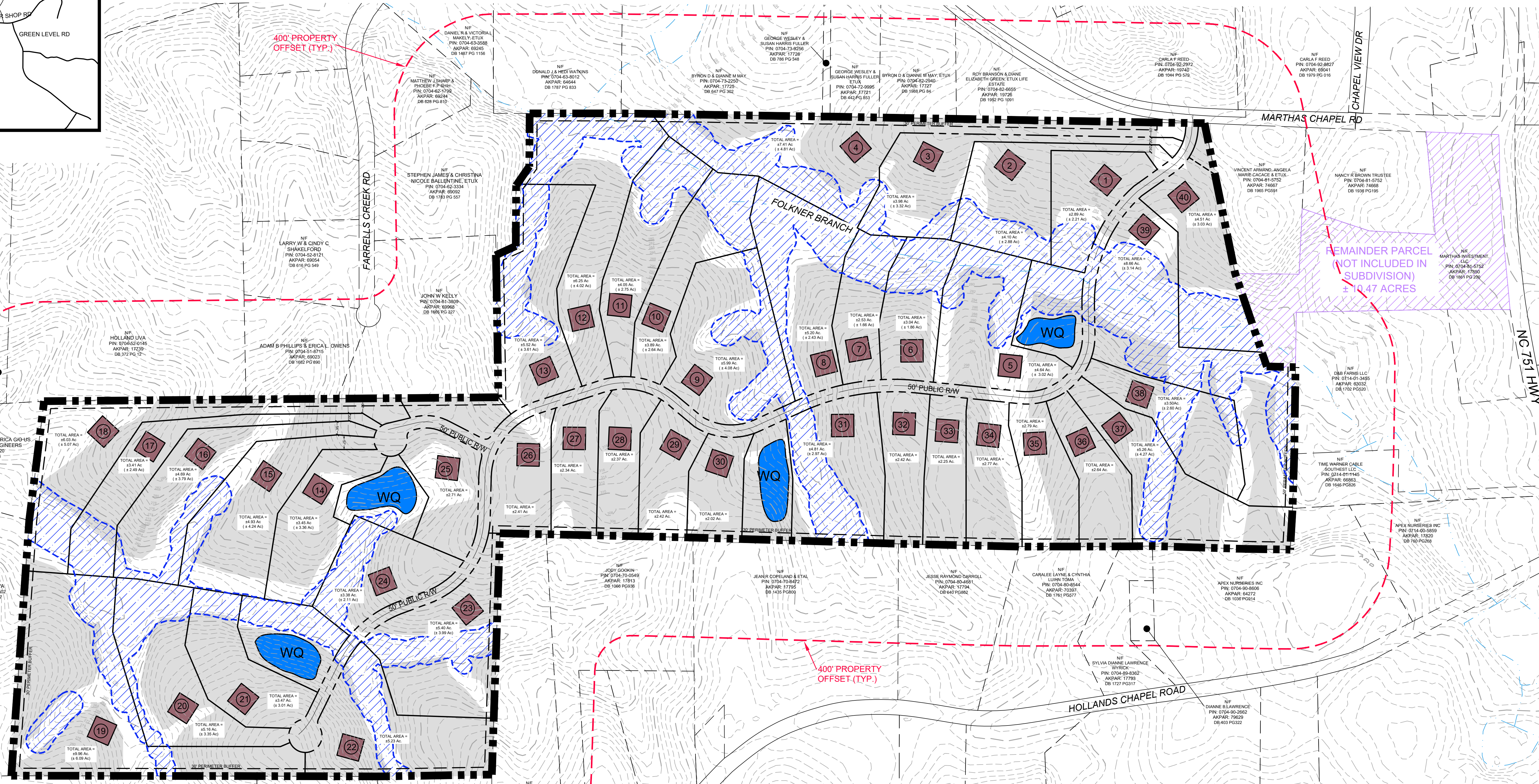
SUITABLE SOILS AREA

SETBACK DATA:

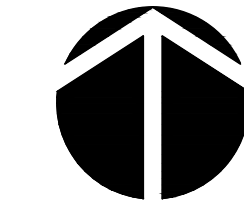
BUILDING SETBACKS:

FRONT 50'
SIDE 25'
REAR 25'

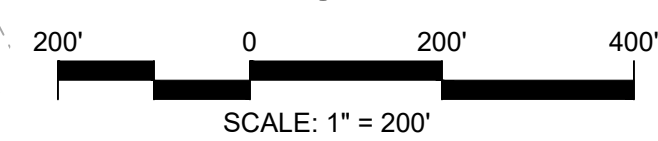
FOLKNER BRANCH SUBDIVISION
REVISED CONCEPT PLAN
CHATHAM COUNTY, NC
May 8, 2019



REMAINDER PARCEL
(NOT INCLUDED IN
SUBDIVISION)
± 10.47 ACRES



NORTH

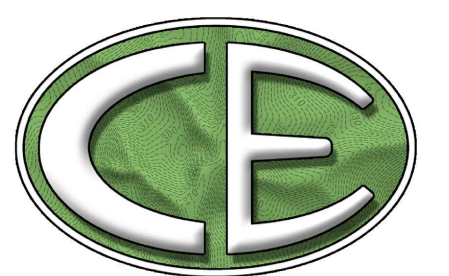


NOTES:

- 1. INFORMATION PROVIDED BY S&EC
2. STREAM CALLS BASED UPON ACOE FIELD MEETING
3. EPHEMERIAL CALLS BY CHATHAM COUNTY

SITE DATA:

Table with 2 columns: SITE DATA and values. Includes PIN (0704-00-81-5752, 0704-00-92-1440), AKPAR (17850, 70380), ZONING (R-1), TOTAL TRACK AREA (± 197 AC), SUBDIVISION AREA (± 185 AC), TOTAL LOTS (± 40 LOTS), AVERAGE LOT SIZE (± 4.21 AC), LENGTH OF ROADS (± 5,794 LF).



CE GROUP
301 GLENWOOD AVE. SUITE 220
RALEIGH, NC 27603
PHONE: 919-367-8790
www.cegroupinc.com
License # C-1739