

TCL-KV Grounds Application Revisions



- Based on the input from the Chatham County Planning Board and some of the neighbors, we offer four variations of Plans for your consideration.
- The TCL-KV Grounds team requests the Planning Board Members recommend for approval the Plan they feel most completely addresses the concerns of the Staff and the Board.
- Through Due Diligence confirmation, each Plan is a viable alternative to the Original Plan.
- Neighbors have been given the new information.

Submitted for April Planning Board Meeting

TCL-KV Grounds Application Revisions

Additional Conditions for all Alternatives

- Match play time shall be limited to weekends from 8AM-6PM .
- Match play season shall be limited from March 15th to October 31st.
- Onsite Latrine cleaning schedule will start at every two weeks, more if needs justify.

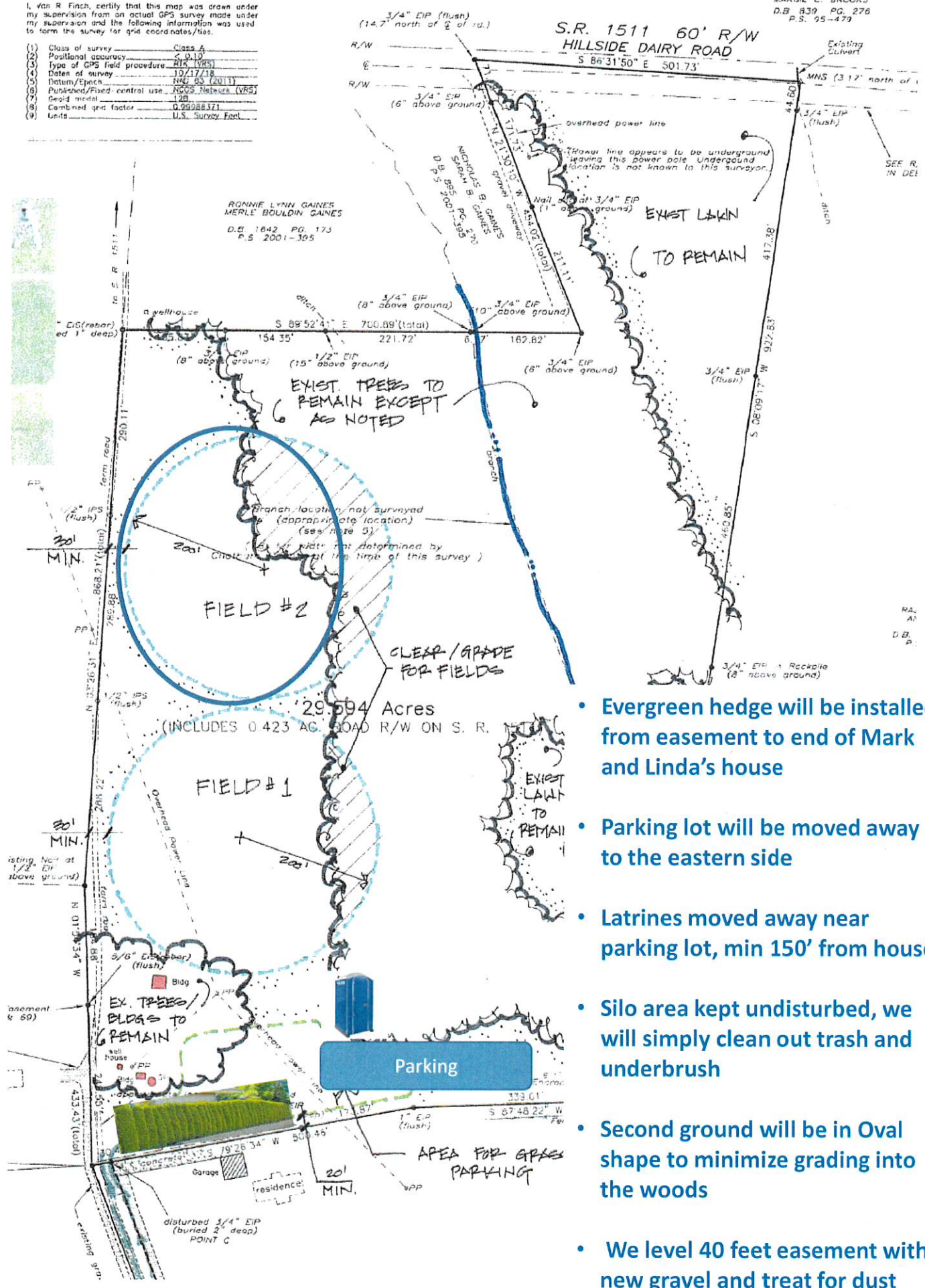
Submitted for April Planning Board Meeting

Alternate 1

YVONNE M. BRUND
MARGIE C. BROOKS
D.B. 839 PG. 276
P.S. 95-479

I, Van R. Frick, certify that this map was drawn under my supervision from an actual GPS survey made under my supervision and the following information was used to form the survey for grid coordinates/ties.

(1) Class of survey	Class A
(2) Positional accuracy	± 0.10'
(3) Type of GPS field procedure	RTK (VRS)
(4) Date of survey	10/17/18
(5) Datum/Epoch	NAD 83 (2011)
(6) Purchase/Field control use	NOGS Malheur (VRS)
(7) Geoid model	12B
(8) Combined grid factor	0.99988371
(9) Units	U.S. Survey Feet



RONNIE LYNN GAINES
MERLE BOULDIN GAINES
D.B. 1642 PG. 173
P.S. 2001-395

S.R. 1511 60' R/W
HILLSIDE DAIRY ROAD
S 86°31'50" E 501.73'

EXIST. LAWN
TO REMAIN

EXIST. TREES TO REMAIN EXCEPT AS NOTED

CLEAR/GRADE FOR FIELDS

Parking

AREA FOR GRASS PARKING

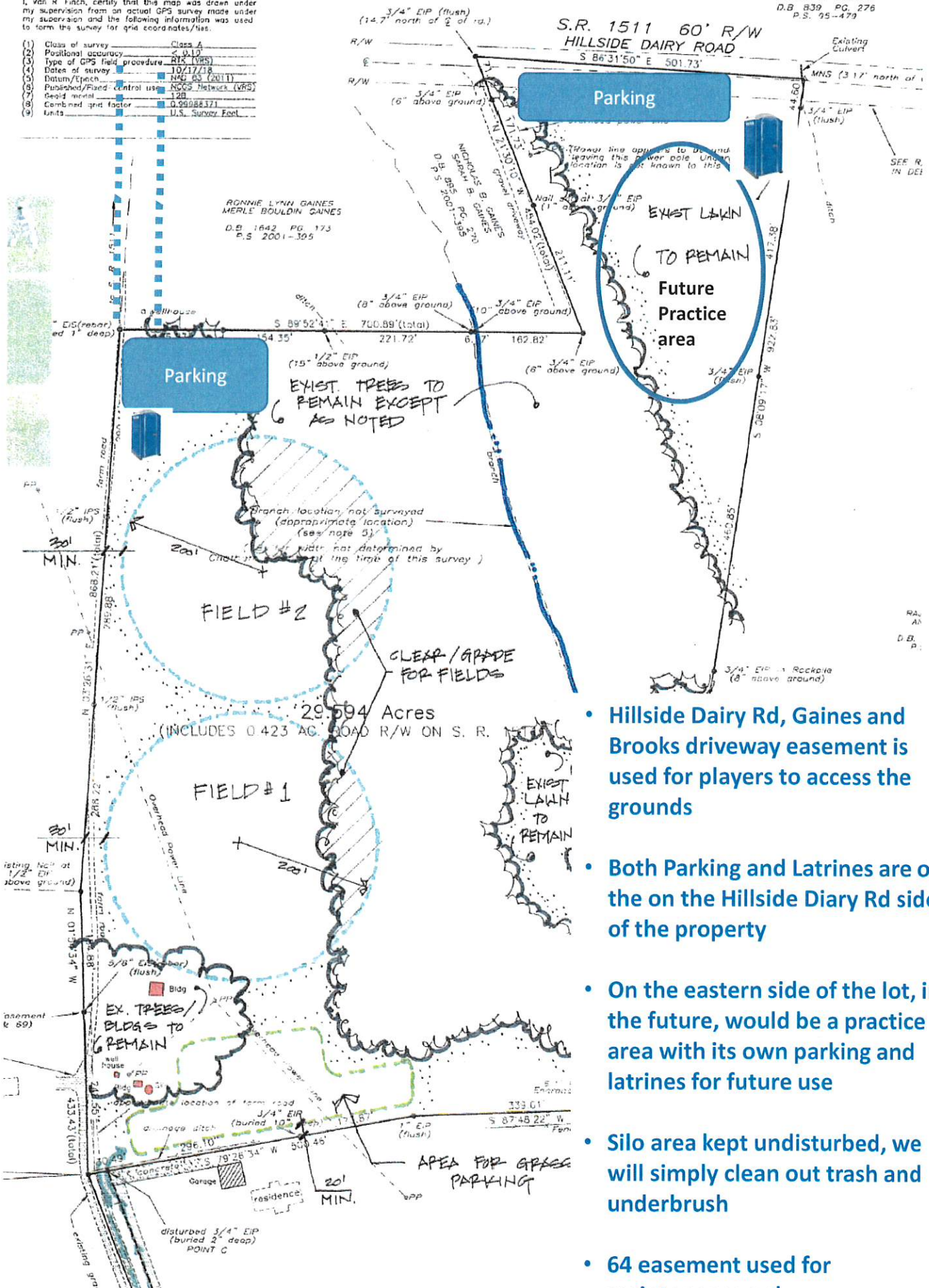
- Evergreen hedge will be installed from easement to end of Mark and Linda's house
- Parking lot will be moved away to the eastern side
- Latrines moved away near parking lot, min 150' from house
- Silo area kept undisturbed, we will simply clean out trash and underbrush
- Second ground will be in Oval shape to minimize grading into the woods
- We level 40 feet easement with new gravel and treat for dust

Alternate - 2

I, Van R. Finch, certify that this map was drawn under my supervision from an actual GPS survey made under my supervision and the following information was used to form the survey for grid coordinates/true.

(1) Class of survey	Class A
(2) Positional accuracy	< 0.10
(3) Type of GPS field procedure	RTK (VBS)
(4) Date of survey	10/17/18
(5) Datum/Epoch	NAD 83 (2011)
(6) Published/Field control use	NCCS Network (VBS)
(7) Geoid model	120
(8) Combined grid factor	0.99988371
(9) Units	U.S. Survey Feet

UNIVERSITY OF MINNESOTA
MARDIE C. BROOKS
D.B. 839 PG. 276
P.S. 95-479



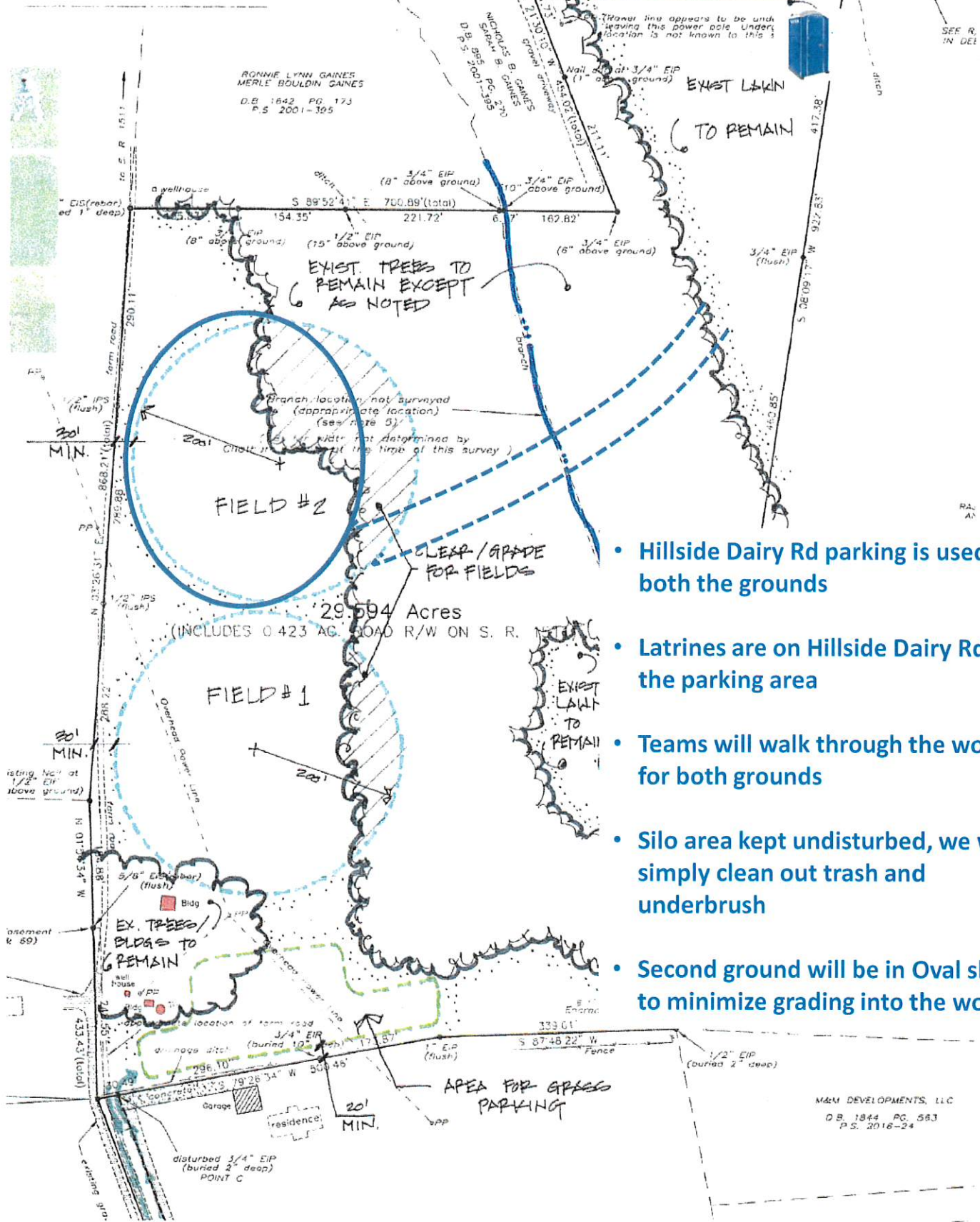
- Hillside Dairy Rd, Gaines and Brooks driveway easement is used for players to access the grounds
- Both Parking and Latrines are on the on the Hillside Dairy Rd side of the property
- On the eastern side of the lot, in the future, would be a practice area with its own parking and latrines for future use
- Silo area kept undisturbed, we will simply clean out trash and underbrush
- 64 easement used for maintenance only

Alternate - 3

RONNIE L. BROADS
MARGIE C. BROOKS
D.B. 839 PG. 278
P.S. 95-479

I, Van R Finch, certify that this map was drawn under my supervision from an actual GPS survey made under my supervision and the following information was used to form the survey for grid coordinates/lines.

(1) Class of survey	Class A
(2) Positional accuracy	< 0.10
(3) Type of GPS field procedure	RTK (VRS)
(4) Date of survey	10/17/18
(5) Datum/Epoch	NAD 83 (2011)
(6) Published/Fixed central use	NAD 83 (VRS)
(7) Epoch interval	120
(8) Combined grid factor	0.99988371
(9) Units	U.S. Survey Feet



RONNIE LYNN GAINES
MERLE BOULDIN GAINES
D.B. 1842 PG. 173
P.S. 2001-105

- Hillside Dairy Rd parking is used for both the grounds
- Latrines are on Hillside Dairy Rd near the parking area
- Teams will walk through the woods for both grounds
- Silo area kept undisturbed, we will simply clean out trash and underbrush
- Second ground will be in Oval shape to minimize grading into the woods

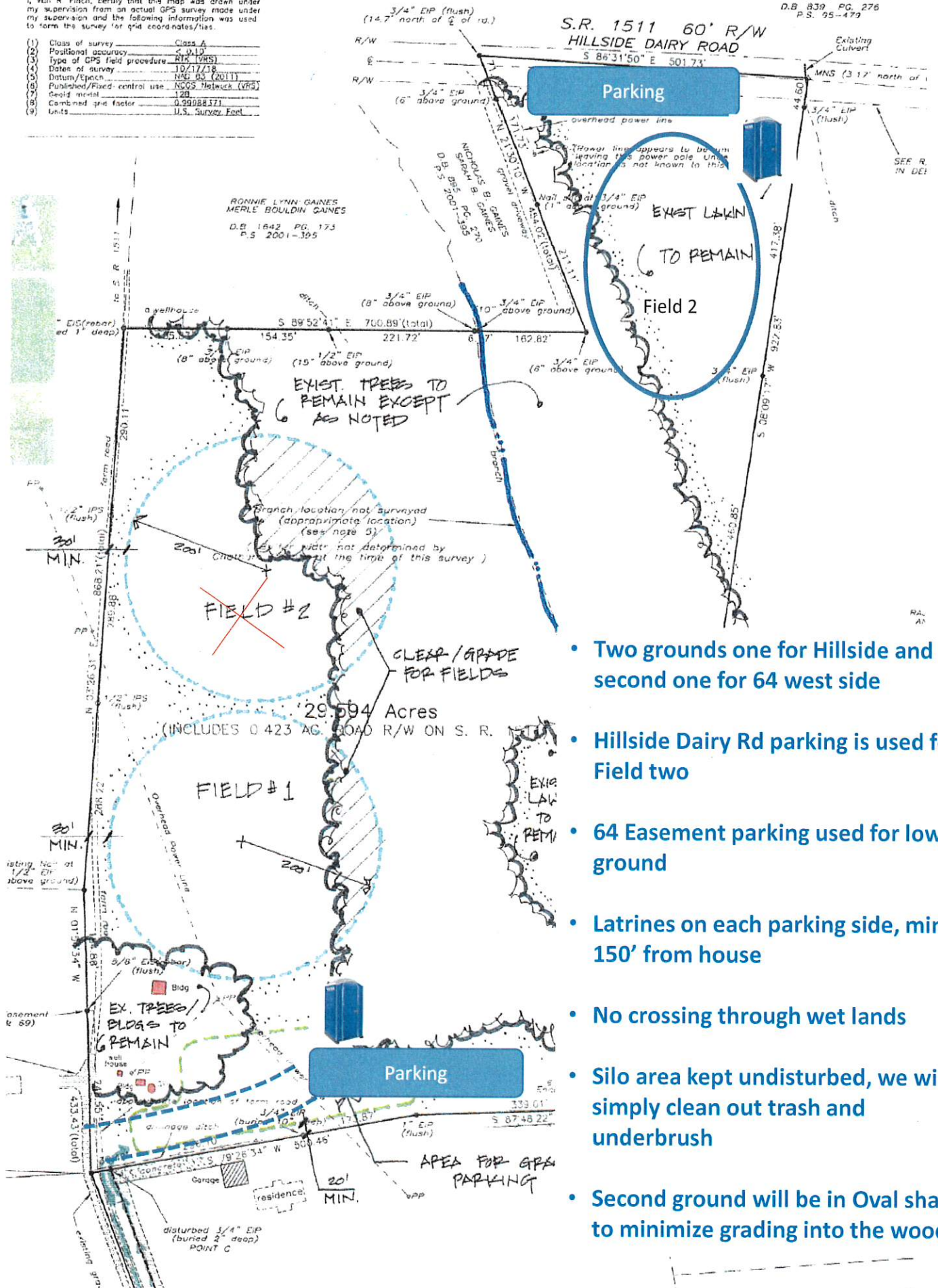
M&M DEVELOPMENTS, LLC
D.B. 1844 PG. 583
P.S. 2016-24

Alternate - 4

I, Van R. Finch, certify that the map was drawn under my supervision from an actual GPS survey made under my supervision and the following information was used to form the survey for grid coordinates/lines.

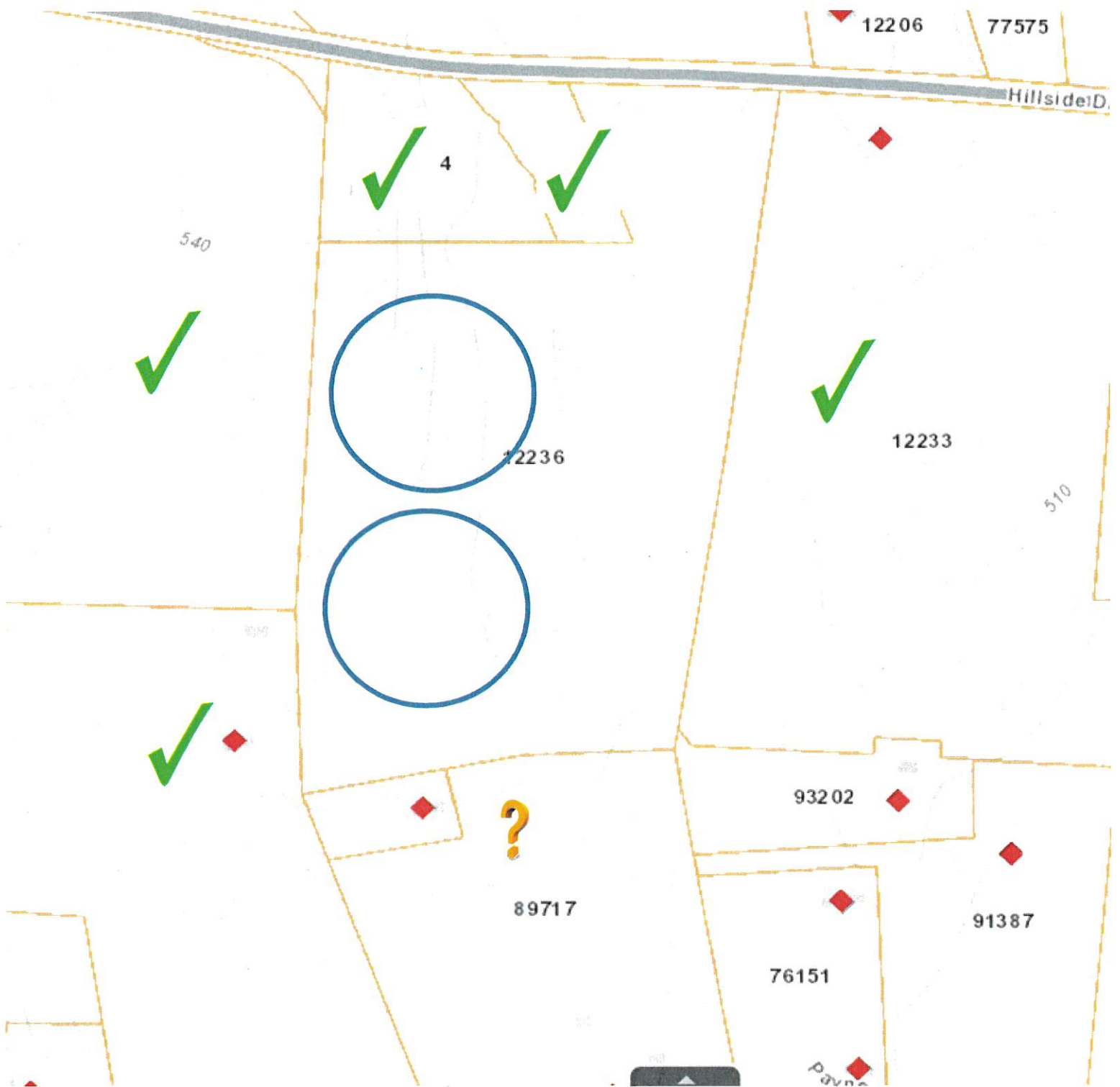
(1) Class of survey	Class A
(2) Positional accuracy	± 0.10'
(3) Type of GPS field procedure	RTK (VRS)
(4) Dates of survey	10/17/18
(5) Datum/EPOCH	NAD 83 (2011)
(6) Published/Fixed control use	NGCS Metlock (VRS)
(7) Geoid model	120
(8) Combined grid factor	0.99988371
(9) Units	U.S. Survey Feet

RONNIE L. BROWN
MARGIE C. BROOKS
D.B. 839 PG. 278
P.S. 95-479



- Two grounds one for Hillside and second one for 64 west side
- Hillside Dairy Rd parking is used for Field two
- 64 Easement parking used for lower ground
- Latrines on each parking side, min 150' from house
- No crossing through wet lands
- Silo area kept undisturbed, we will simply clean out trash and underbrush
- Second ground will be in Oval shape to minimize grading into the woods

Neighborhood Support for Cricket Fields



- Marty says he would turn green if we sell 10 acres with Owner finance on the southern side of the property