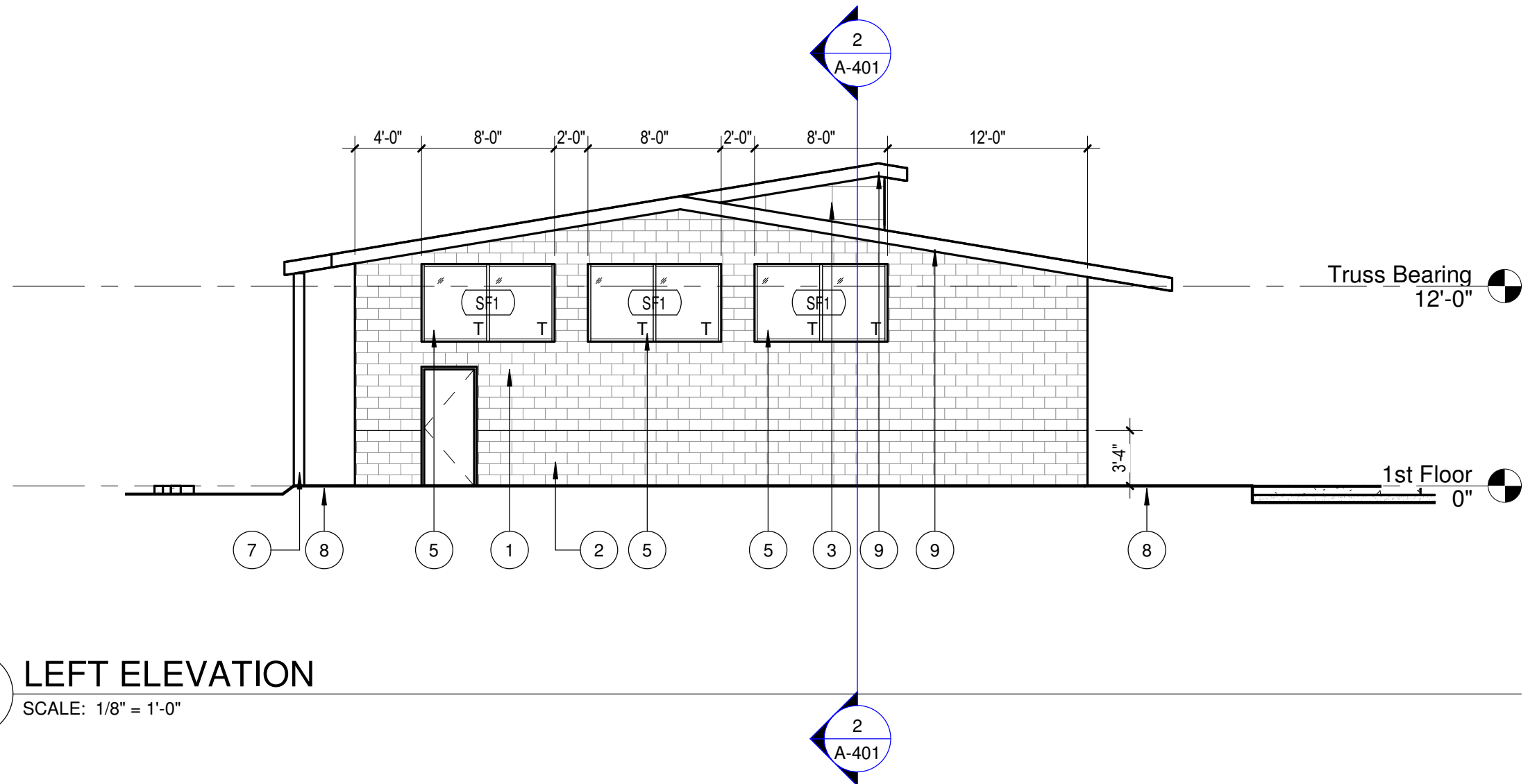
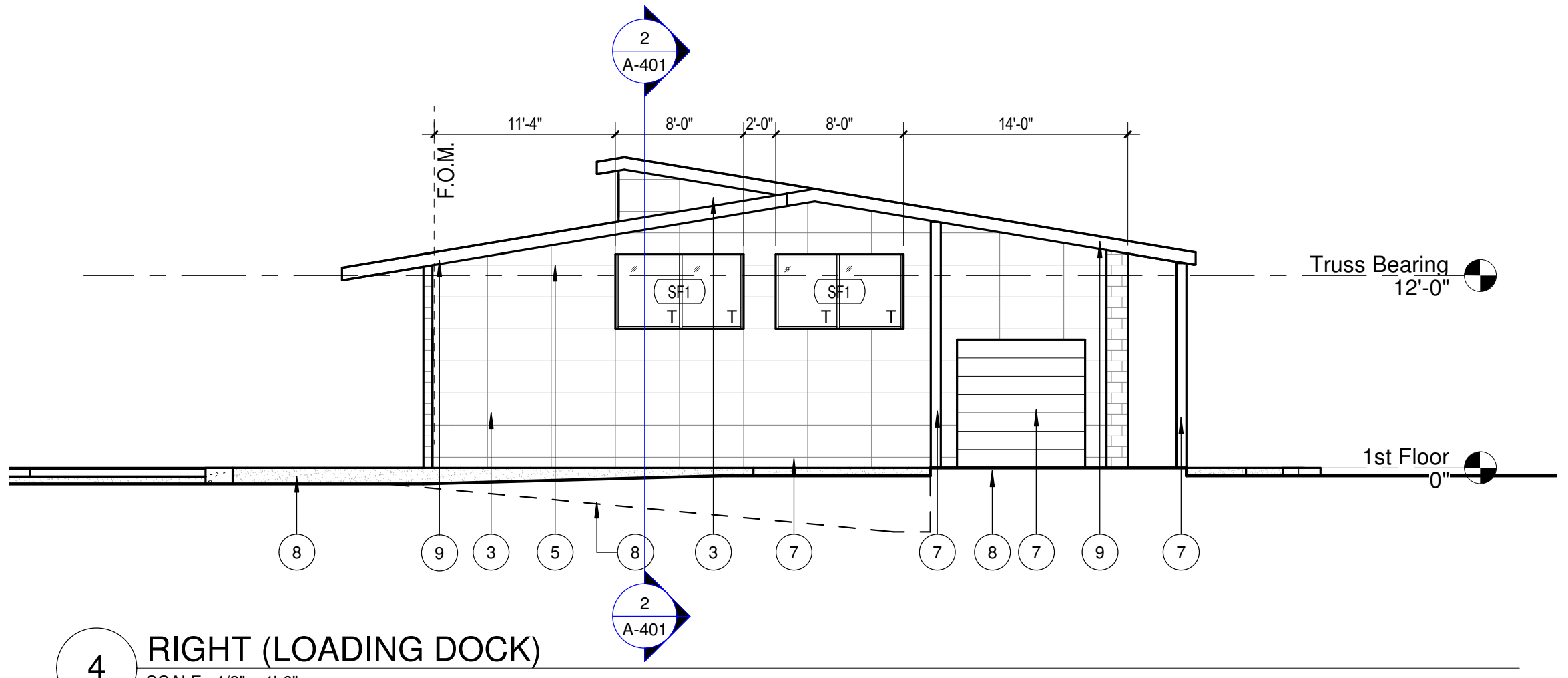


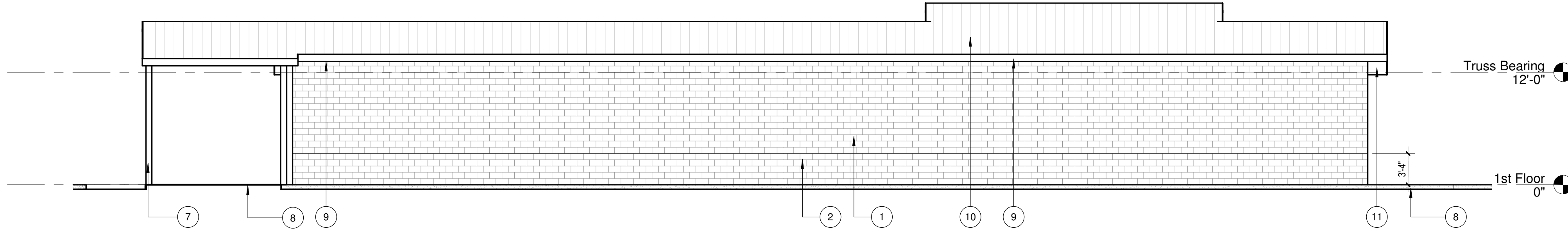
1 FRONT ELEVATION
SCALE: 1/8" = 1'-0"



2 LEFT ELEVATION
SCALE: 1/8" = 1'-0"



4 RIGHT (LOADING DOCK)
SCALE: 1/8" = 1'-0"



3 REAR ELEVATION
SCALE: 1/8" = 1'-0"

EXTERIOR MATERIALS

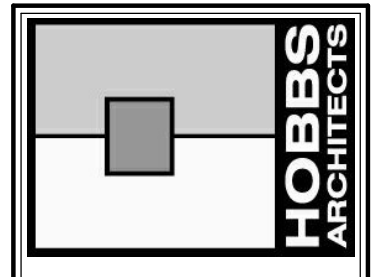
1. MASONRY TYPE 1
2. MASONRY TYPE 2
3. FIBER CEMENT SIDING TYPE 1
- 4.
5. ALUMINUM STOREFRONT GLAZING
6. ALUMINUM CLAD DOOR
7. GALVANIZED STEEL
8. CONCRETE PAVING
9. FIBER CEMENT FASCIA
10. 5V GALVALUME METAL ROOFING
11. FIBER CEMENT SOFFIT

ELEVATION GENERAL NOTES

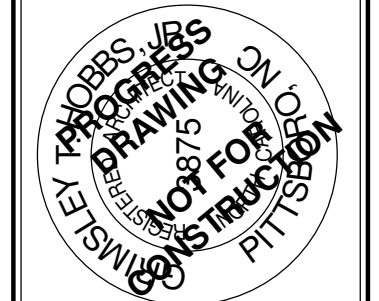
1. JOINTS ARE TO BE AS INDICATED IN ELEVATIONS.
2. REFER TO WALL SECTIONS FOR DETAILED ASSEMBLIES.
3. ALL EXTERIOR EXPOSED STEEL TO BE PAINTED. SEE SPECIFICATIONS IN PROJECT MANUAL.
4. REFER TO ENGINEERING DRAWINGS FOR LOCATIONS OF EXTERIOR WALL MOUNTED LIGHTS, OUTLETS, HOSE BIBBS, AND OTHERS.

ELEVATION SHEET NOTES

1. ADD NOTE
2. ADD NOTE



HOBBS ARCHITECTS, PA
Architects & Consultants
159 West Salisbury Street
PO Box 1457
Pittsboro, North Carolina 27312
Voice: (919) 545-2004
Fax: (919) 545-9002



ABC Store Wilsonville

Holmes Oil Company

Cruizers #47 || 10525 US Hwy 64 || Apex, NC 27502

No.	Date

EXTERIOR BUILDING ELEVATIONS

DATE
03.18.2019

A-301