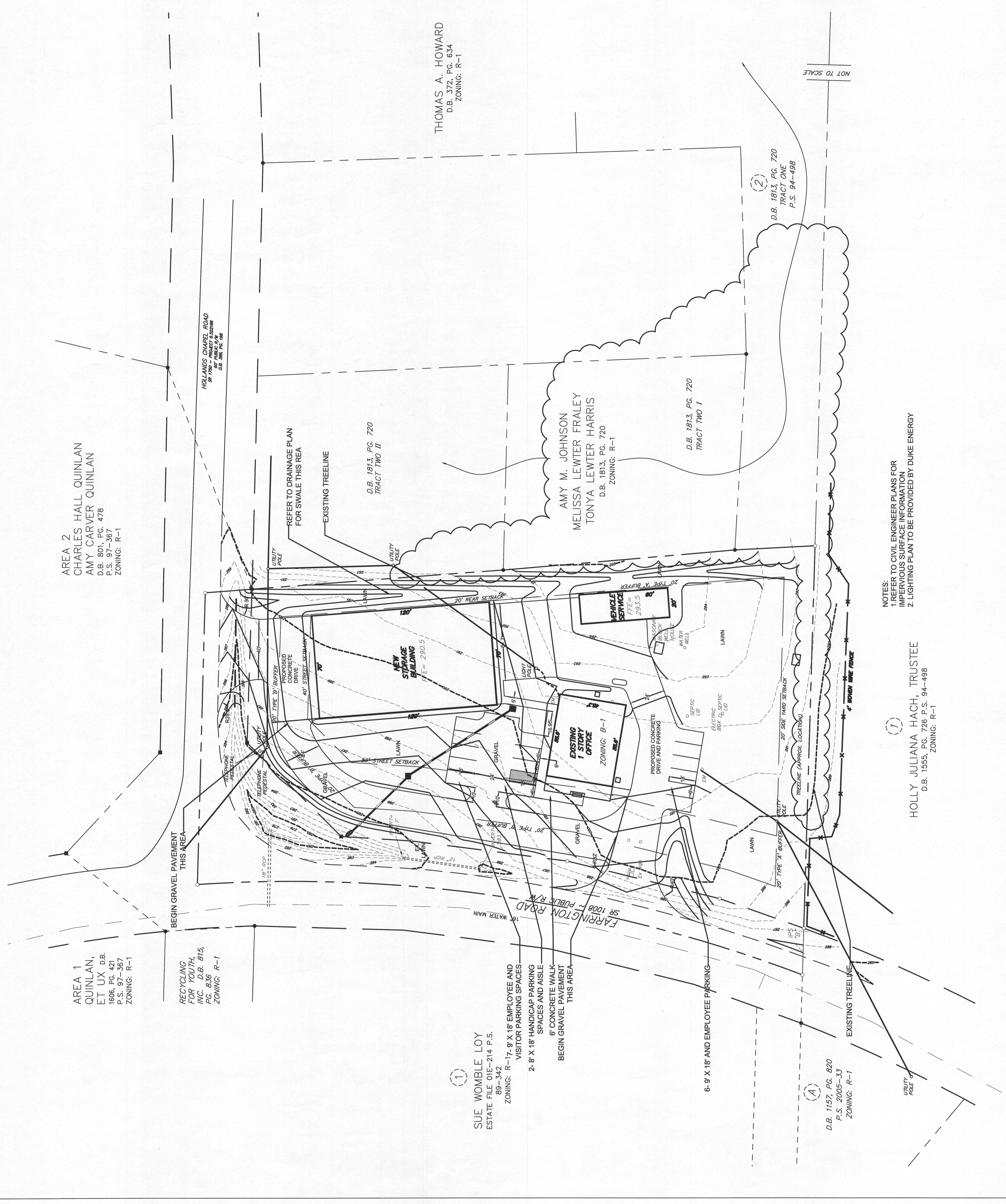
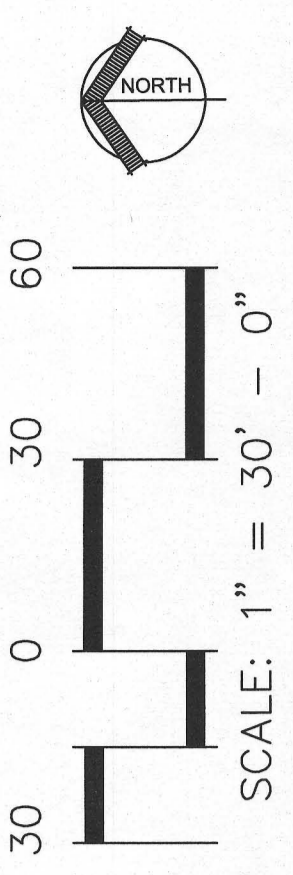


SITE DATA TABLE

SITE SUMMARY DATA	
PROJECT ADDRESS:	2590 FARRINGTON ROAD CHAPEL HILL, NC 27515
PARCEL ID NO.:	17654
ZONING:	B1
USE:	COMMERCIAL
TOTAL SITE ACREAGE:	1.08 ACRES (73,241 SF)
EXISTING % IMPERVIOUS AREA:	61.91% (45,395 SF)
NEW SITE IMPERVIOUS AREA:	0.83 ACRES (58,925 SF)
NEW % IMPERVIOUS AREA:	49.41%

PRELIMINARY SITE PLAN



NOTES:
 1. REFER TO CIVIL ENGINEER PLANS FOR IMPERVIOUS SURFACE INFORMATION
 2. LIGHTING PLAN TO BE PROVIDED BY DUKE ENERGY

(1)
 HOLLY JULIANA HACH, TRUSTEE
 D.B. 1555, PG. 726 P.S. 94-498
 ZONING: R-1

AREA 2
 CHARLES HALL QUINLAN
 AMY CARVER QUINLAN
 D.B. 801, PG. 478
 P.S. 97-367
 ZONING: R-1

AREA 1
 QUINLAN,
 ET UX D.B.
 1806, PG. 421
 P.S. 97-367
 ZONING: R-1

RECYCLING
 FOR YOUTH,
 INC. D.B. 815,
 PG. 836
 ZONING: R-1

(1)
 SUE WOMBLE LOY
 ESTATE FILE 01E-214 P.S.
 89-342
 ZONING: R-17-9' X 18' EMPLOYEE AND
 VISITOR PARKING SPACES
 2-8' X 18' HANDICAP PARKING
 SPACES AND AISLE
 6' CONCRETE WALK-
 PAVEMENT
 THIS AREA

THOMAS A. HOWARD
 D.B. 372, PG. 634
 ZONING: R-1

AMY M. JOHNSON
 MELISSA LEWTER FRALEY
 TONYA LEWTER HARRIS
 D.B. 1813, PG. 720
 ZONING: R-1

D.B. 1813, PG. 720
 TRACT TWO I

(2)
 D.B. 1813, PG. 720
 TRACT ONE
 P.S. 94-498

(A)
 D.B. 1157, PG. 820
 P.S. 2005-33
 ZONING: R-1

NOT TO SCALE