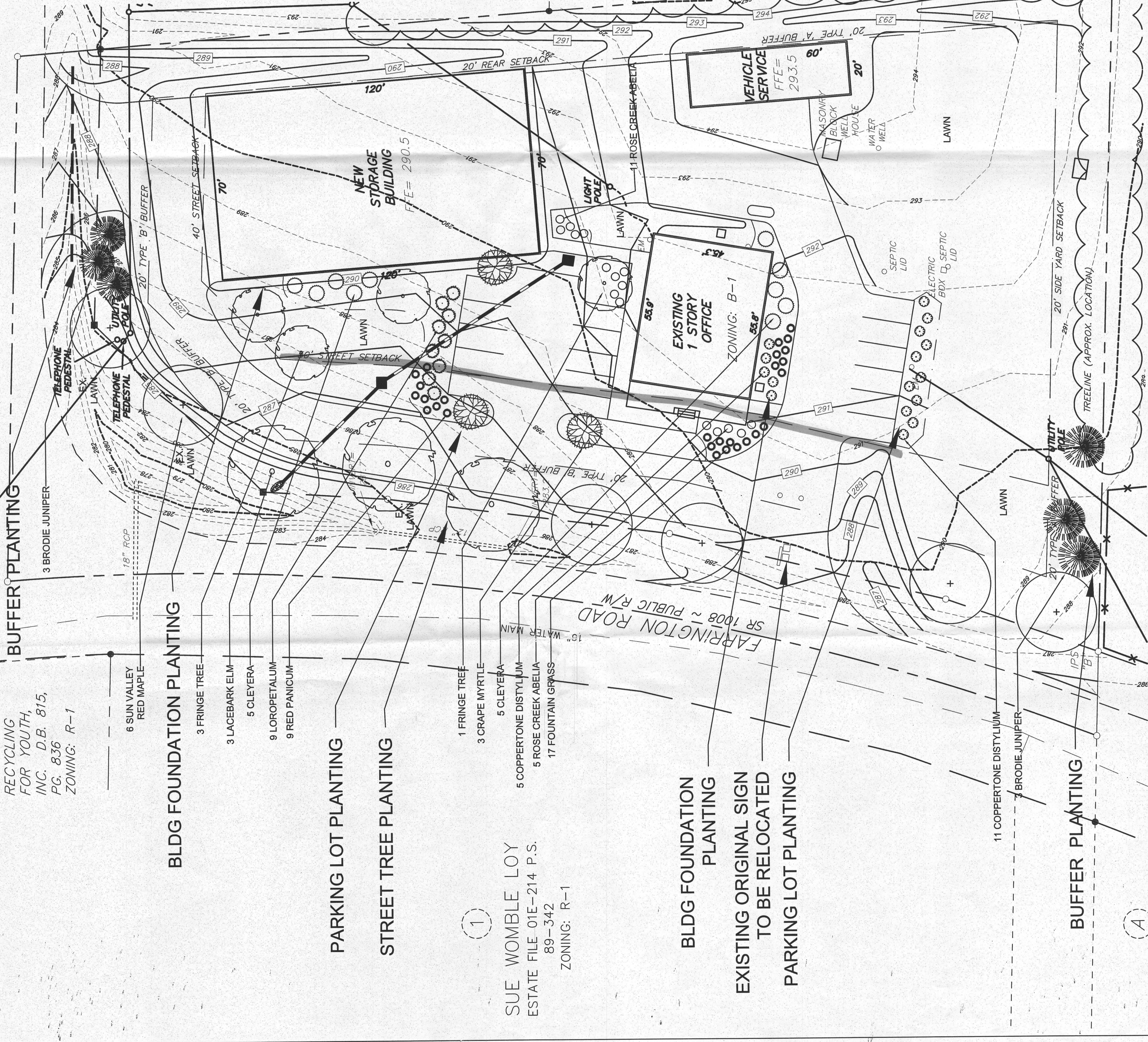


PLANT SPECIFICATION LIST

QTY	SCIENTIFIC NAME	COMMON NAME	SIZE @ PLANTING	DESCRIPTION
TREES:				
6	ACER RUBRUM 'SUN VALLEY' OR EQUAL	SUN VALLEY RED MAPLE OR EQUAL	2 1/2" CAL. 12'-14" HT	RED FALL COLOR, THICKER LEAVES, COMPACT GROWER
4	CHIONANTHUS VIRGINICUS	FRINGE TREE	7'-8" HT	NATIVE, WHITE FLOWER IN SPRING, ATTRACTS BIRDS
6	JUNIPERUS VIRGINIANA 'BRODIE'	BRODIE JUNIPER	6'-7" HT	NATIVE, CONIFEROUS EVERGREEN FOR ACCENT
3	LAGERTROEMIA INDICA	CRAPE MYRTLE	8" HT	MULTI TRUNK, SUMMER FLOWER, WHITE BLOOM
3	ULMUS PARVIFOLIA	LACEBARK ELM	2 1/2" CAL. 12'-14" HT	ATTRACTIVE BARK, GOLD FALL COLOR
SHRUBS:				
16	ABELIA CHINENSE 'ROSE CREEK'	ROSE CREEK ABELIA	15" HT	COMPACT GROWER, SUMMER FLOWER
16	DISTYLUM COPPERTONE	COPPERTONE	18"-24" HT	HARDY EVERGREEN, BRONZE NEW GROWTH
9	LOROPETALUM CHINENSE 'PURPLE DIAMOND'	LOROPETALUM	24" HT	SEMI-DWARF, BURGUNDY FOLIAGE, ROSE-PINK FLOWERS
10	TERNSTROEMIA GYMNANTHERA	CLEYERA	3'-4" HT	MED TO LARGE EVERGREEN SHRUB, GLOSSY FOLIAGE
ORNAMENTAL GRASSES:				
17	PENNISETUM ALOPECUROIDES 'KARLEY ROSE'	KARLEY ROSE FOUNTAIN GRASS	1 GAL	ORNAMENTAL GRASS; FALL PLUMES
9	PANICUM VIRGATUM 'SHEMANDOAH'	RED PANICUM	3 GAL	UPRIGHT BLUE GREEN FOLIAGE, RED FALL COLOR

GENERAL NOTES:

- LANDSCAPE CONTRACTOR TO VERIFY LOCATION OF UNDERGROUND UTILITIES BEFORE BEGINNING ALL WORK.
- PLANT MATERIAL WILL BE REJECTED UNLESS ANY AND ALL PLANT MATERIAL ARE OF SIZE, SPREAD, CALIPER, GENUS, SPECIES AND VARIETY SHOWN. ANY MATERIAL WITH EVIDENCE OF DISEASE OR PEST INFESTATIONS WILL BE REJECTED. ALL REWORK WILL BE AT THE CONTRACTOR'S EXPENSE. NO REWORK WILL BE PERMITTED ONLY UPON SUBMISSION OF WRITTEN PROOF TO THE LANDSCAPE ARCHITECT THAT A SPECIFIED PLANT IS NOT OBTAINABLE.
- ALL DISTURBED AREAS ARE TO BE STABILIZED WITH LAWN, PLANTINGS, OR MULCH.
- PLACE TRIPLE SHREDDED HARDWOOD MULCH IN PLANTING BEDS AND AROUND TREE AND SHRUB PLANTINGS NEAR BLDG. AS APPROVED BY OWNER.
- TREE PLACEMENT AND LANDSCAPE BED LAYOUT TO BE APPROVED BY OWNER AND LANDSCAPE ARCHITECT PRIOR TO INSTALLATION.
- SOILS SHALL BE APPRECIABLY FREE OF GRAVEL, STONES, RUBBLE OR TRASH. ALL EXISTING SOILS CONTAMINATED SOIL OR ROADBASE FILL SHALL BE REMOVED.
- ALL PLANTINGS SHALL BE MAINTAINED IN AN ATTRACTIVE AND HEALTHY CONDITION BY THE OWNER AS REQUIRED BY CHATHAM COUNTY DESIGN GUIDELINES.
- PROPOSED LANDSCAPE PLAN TO BE APPROVED BY CHATHAM COUNTY PRIOR TO INSTALLATION.



BUFFER PLANTING

RECYCLING FOR YOUTH, INC. D.B. 815, PG. 836 ZONING: R-1

BLDG FOUNDATION PLANTING

- 3 FRINGE TREE
- 3 LACEBARK ELM
- 5 CLEYERA
- 9 LOROPETALUM
- 9 RED PANICUM

PARKING LOT PLANTING

STREET TREE PLANTING

- 1 FRINGE TREE
- 3 CRAPE MYRTLE
- 5 CLEYERA
- 5 COPPERTONE DISTYLUM
- 5 ROSE CREEK ABELIA
- 17 FOUNTAIN GRASS

BLDG FOUNDATION PLANTING

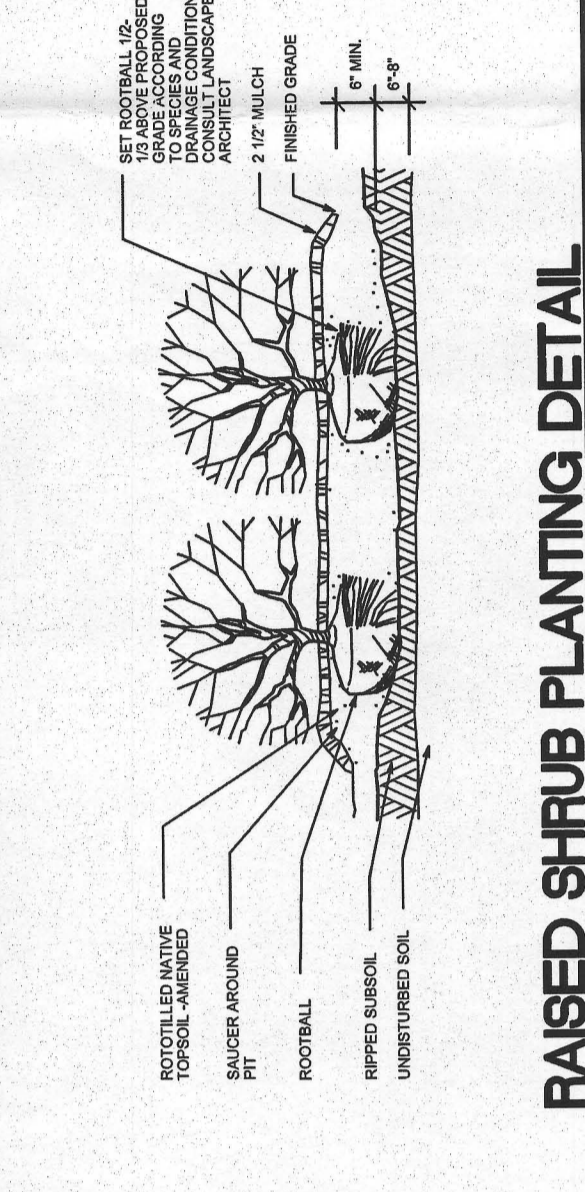
EXISTING ORIGINAL SIGN TO BE RELOCATED

PARKING LOT PLANTING

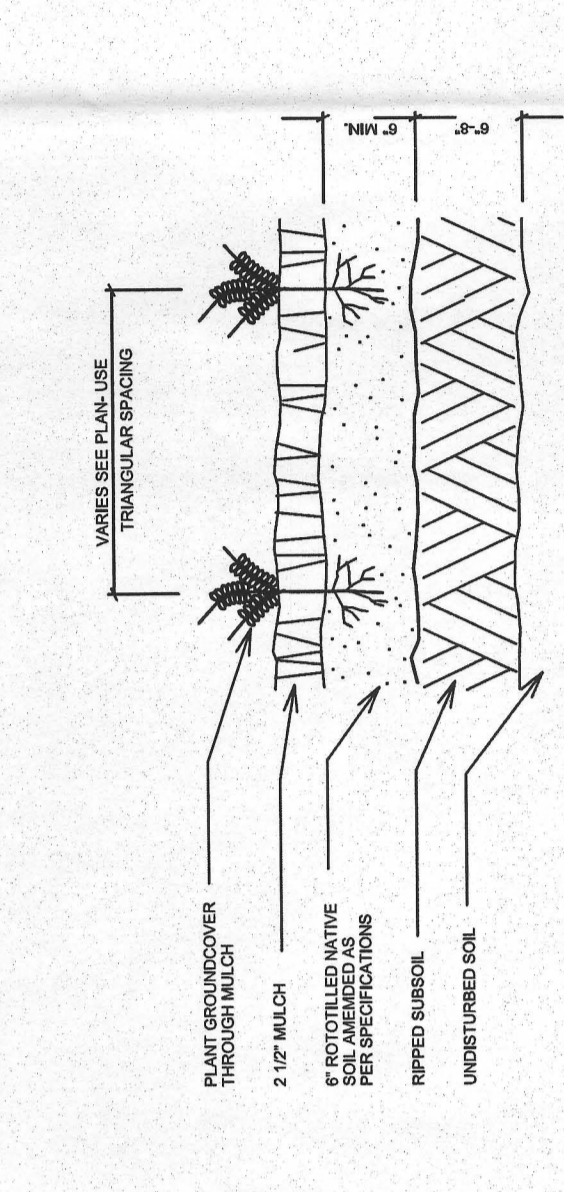
- 11 COPPERTONE DISTYLUM
- 3 BRODIE JUNIPER

BUFFER PLANTING

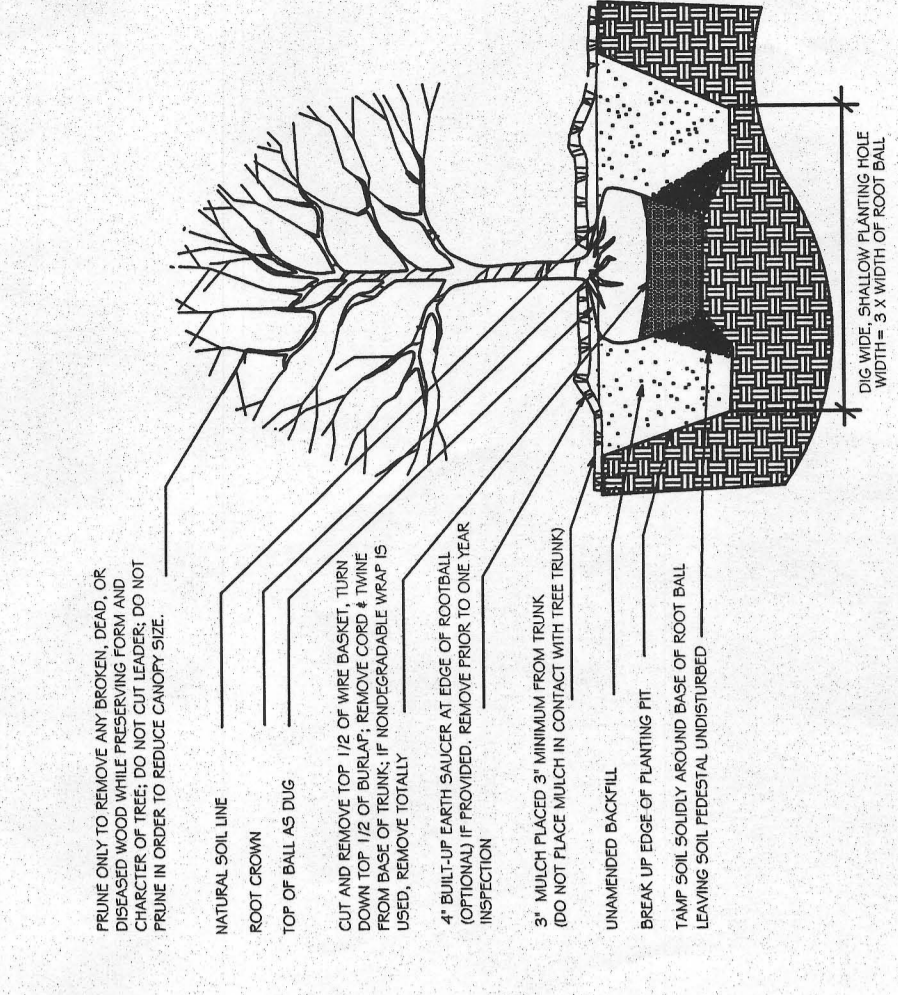
EVERGREEN TREE PLANTING DETAIL



RAISED SHRUB PLANTING DETAIL



GROUND COVER PLANTING DETAIL



TREE PLANTING DETAIL

PRELIMINARY LANDSCAPE PLAN



SCALE: 1" = 20' - 0"

J&D TREE PROS
2590 FARRINGTON ROAD
CHAPEL HILL, NORTH CAROLINA

DATE: 1.24.19
REVISIONS:
SCALE NOTED:
JOB: J&D TREE PROS
SHEET:
L-1
OF 3 SHEETS

Arnette Clark Design
Landscape Architecture | Site Planning
Carry, NC | arnette@ncrr.com | 919.852.0670