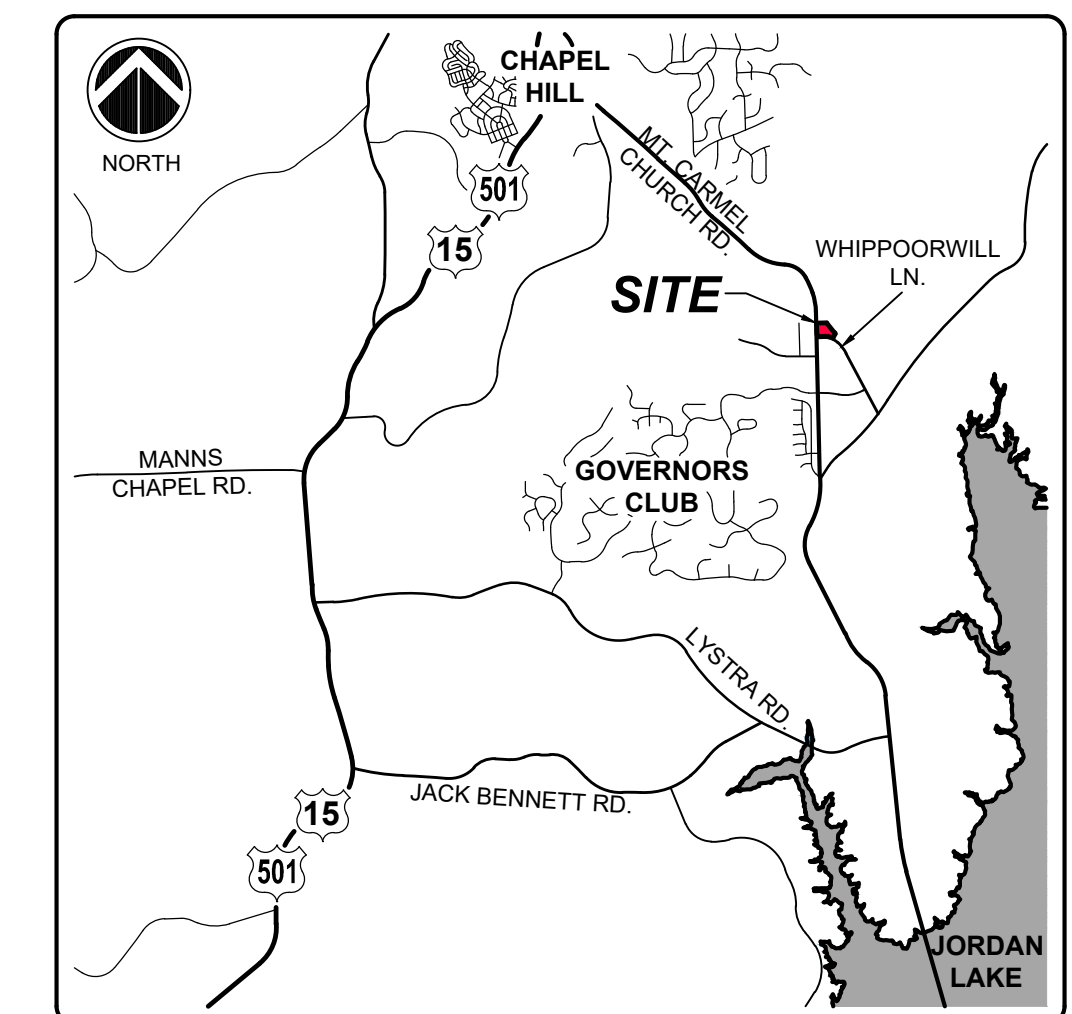


N/F  
MOUNT CARMEL BAPTIST CHURCH  
OF CHAPEL HILL, NORTH CAROLINA, INC.  
PIN: 9796-28-3619  
DB 1364 PG 765  
PB 2007 PG 385

N/F  
CAROLINA MEADOWS, INC.  
PIN: 9796-28-9590  
DB 477 PG 8  
PB 98 PG 208  
± 6.73 AC

N/F  
CSP COMMUNITY OWNER, LLC  
PIN: 9796-27-4131  
CSPB 1224 PG 495  
PIN: 9796-27-4131  
PB 97 PG 247  
± 6.73 AC



VICINITY MAP  
NTS

# Current Approved CUP Area "B" Carolina Meadows Health Center

Chatham County, North Carolina  
September 4, 2014

**SITE DATA**

CURRENT ZONING:	CU-RA-40
PROJECT BOUNDARY:	± 7.33 AC
MAX BUILDING:	± 130,000 S.F.
TOTAL IMPERVIOUS AC.:	± 2.63 AC.
TOTAL IMPERVIOUS %:	± 35.9%
TOTAL PARKING SPACES :	± 77

PROJECT BOUNDARY:

**BUILDING SETBACKS:**

FRONT:	40'
SIDE:	25'
REAR:	25'

**CE GROUP**  
301 GLENWOOD AVE. SUITE 220  
RALEIGH, NC 27603  
PHONE: 919-367-8790  
www.cegroupinc.com  
License # C-1739

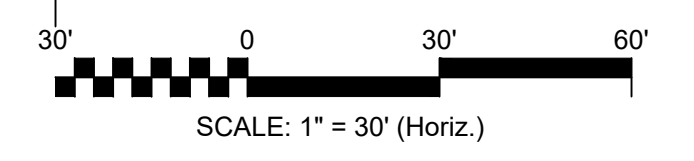
**SFCS**  
ARCHITECT

**CAROLINA MEADOWS**  
OWNER

ENGINEER



NORTH



MT. CARMEL CHURCH ROAD  
SR-1008 - 60' PUBLIC RW  
(PER PB 91 PG 169)

WHIPPORWILL LANE  
SR-1727 50' PUBLIC RW  
(PER PB 95 PG 214)

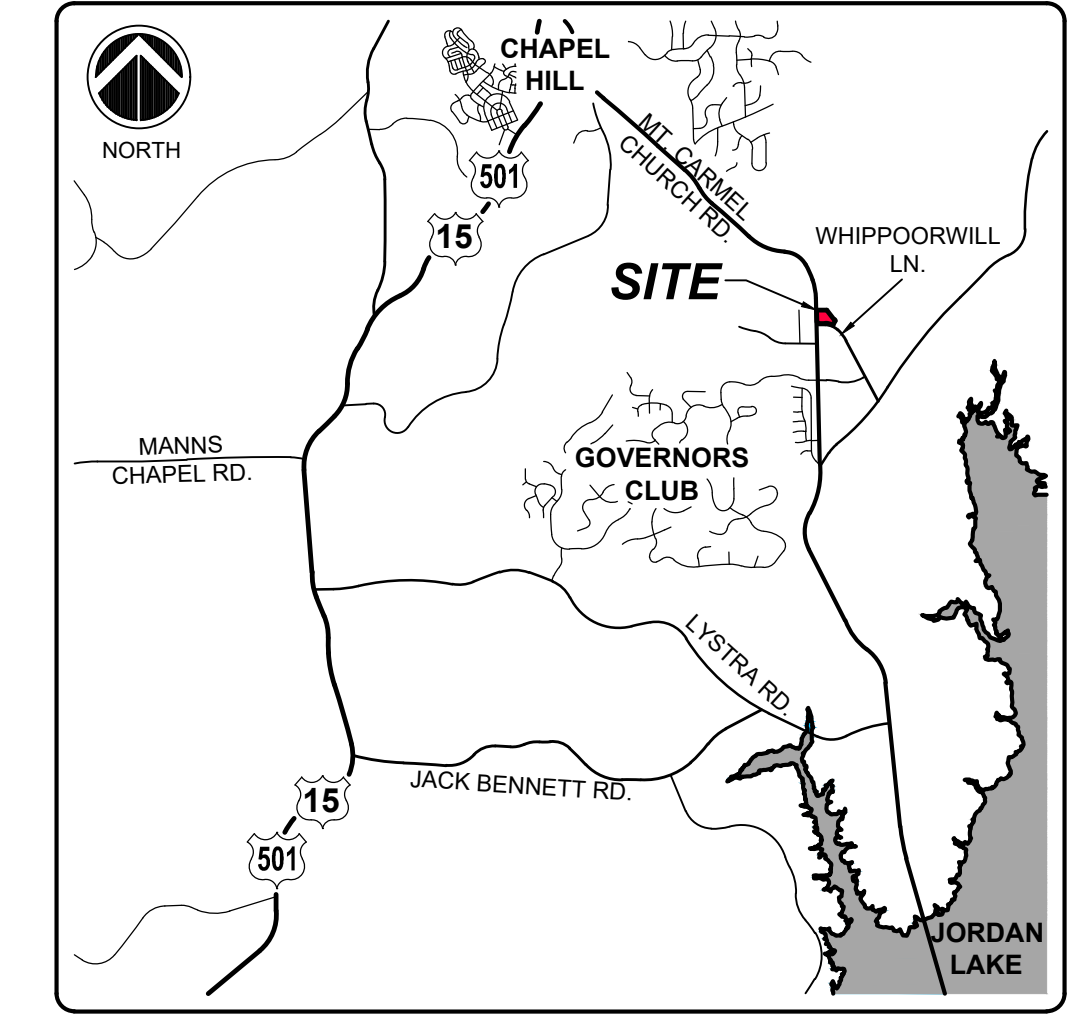
MAPLE LANE  
PRIVATE DRIVE

OAK LANE  
PRIVATE DRIVE



P:\108 (Carolina Meadows)\108-13 (New CUP 2018)\DWG\Aug 2018 CUP Submittal\CKA Villas - 2018 CUP 7-10-18 Current CUP Plan.dwg, 24:36, 8/1/2018 2:54:41 PM, DWG to PDF, ac3, 1:1

NOTE: THE FEATURES DESCRIBED AND DEPICTED HEREIN ARE PRELIMINARY AND BASED ON CURRENT DEVELOPMENT PLANS. ACTUAL DEVELOPMENT MAY BE SUBJECT TO CHANGE BASED UPON FURTHER REVIEW.



# Area "B" Carolina Meadows The Villas Site Plan

Chatham County, North Carolina  
August 3, 2018

SITE DATA	
CURRENT ZONING:	CU-RA-40
PROJECT BOUNDARY:	± 7.33 AC
MAX BUILDING:	± 41,854 S.F.
TOTAL IMPERVIOUS AC.:	± 3.14 AC.
TOTAL IMPERVIOUS %:	± 42.8%
TOTAL PARKING SPACES :	± 132

PROJECT BOUNDARY:

BUILDING SETBACKS:

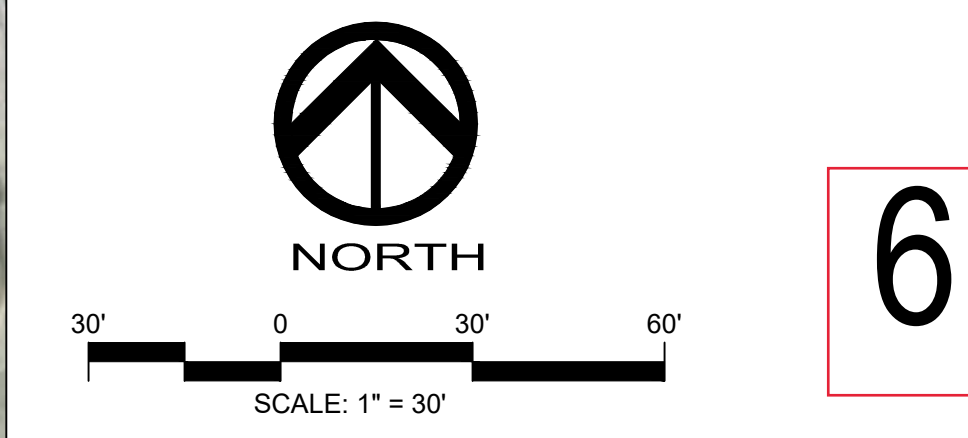
FRONT:	40'
SIDE:	25'
REAR:	25'

APPLICANT:  
CAROLINA MEADOWS, INC.  
100 Carolina Meadows Drive  
Chapel Hill, NC 27517

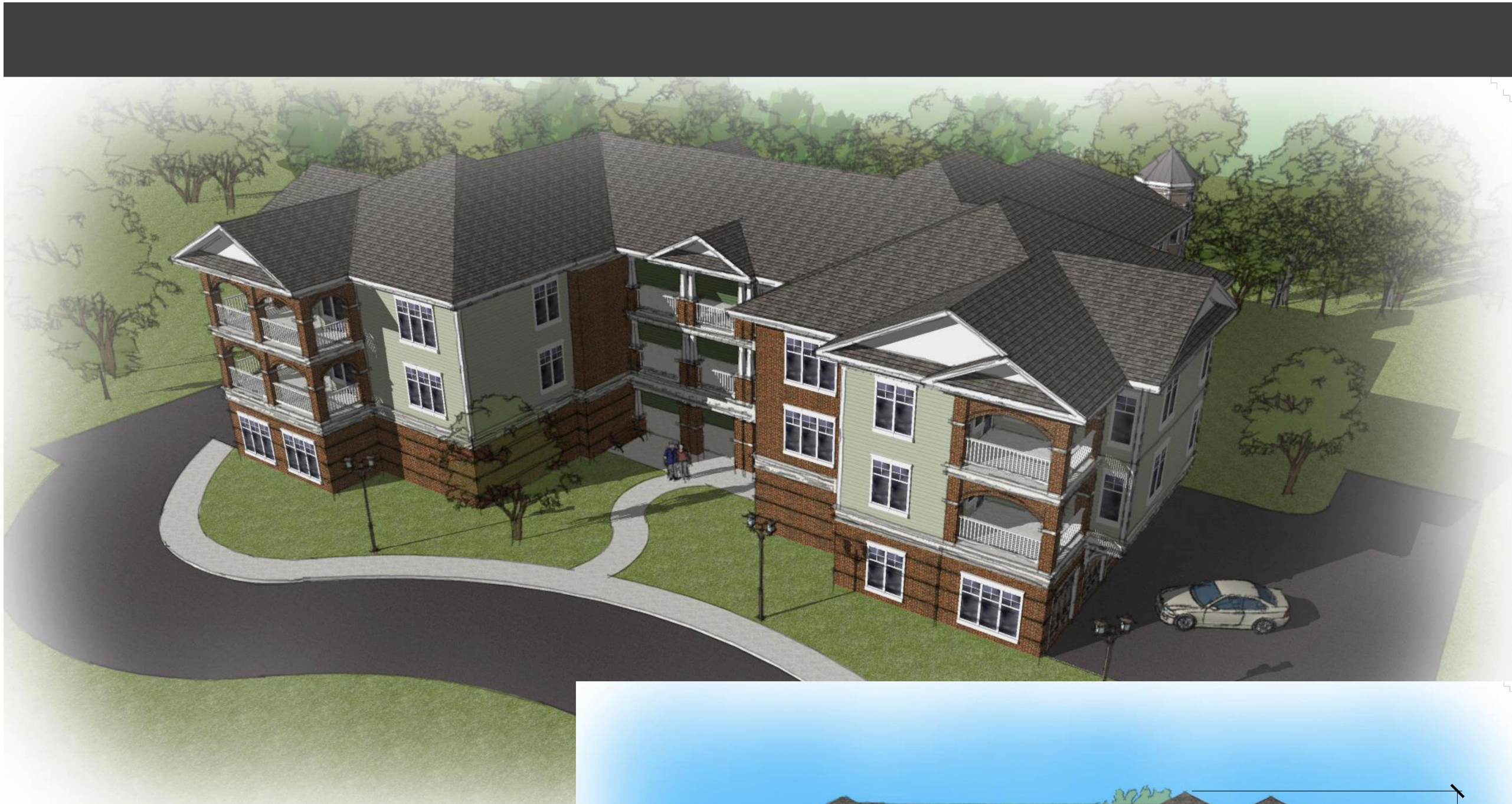


**CE GROUP**  
301 GLENWOOD AVE. SUITE 220  
RALEIGH, NC 27603  
PHONE: 919-367-8790  
www.cegroupinc.com  
License # C-1739

**CAROLINA MEADOWS**  
ENGINEER  
OWNER



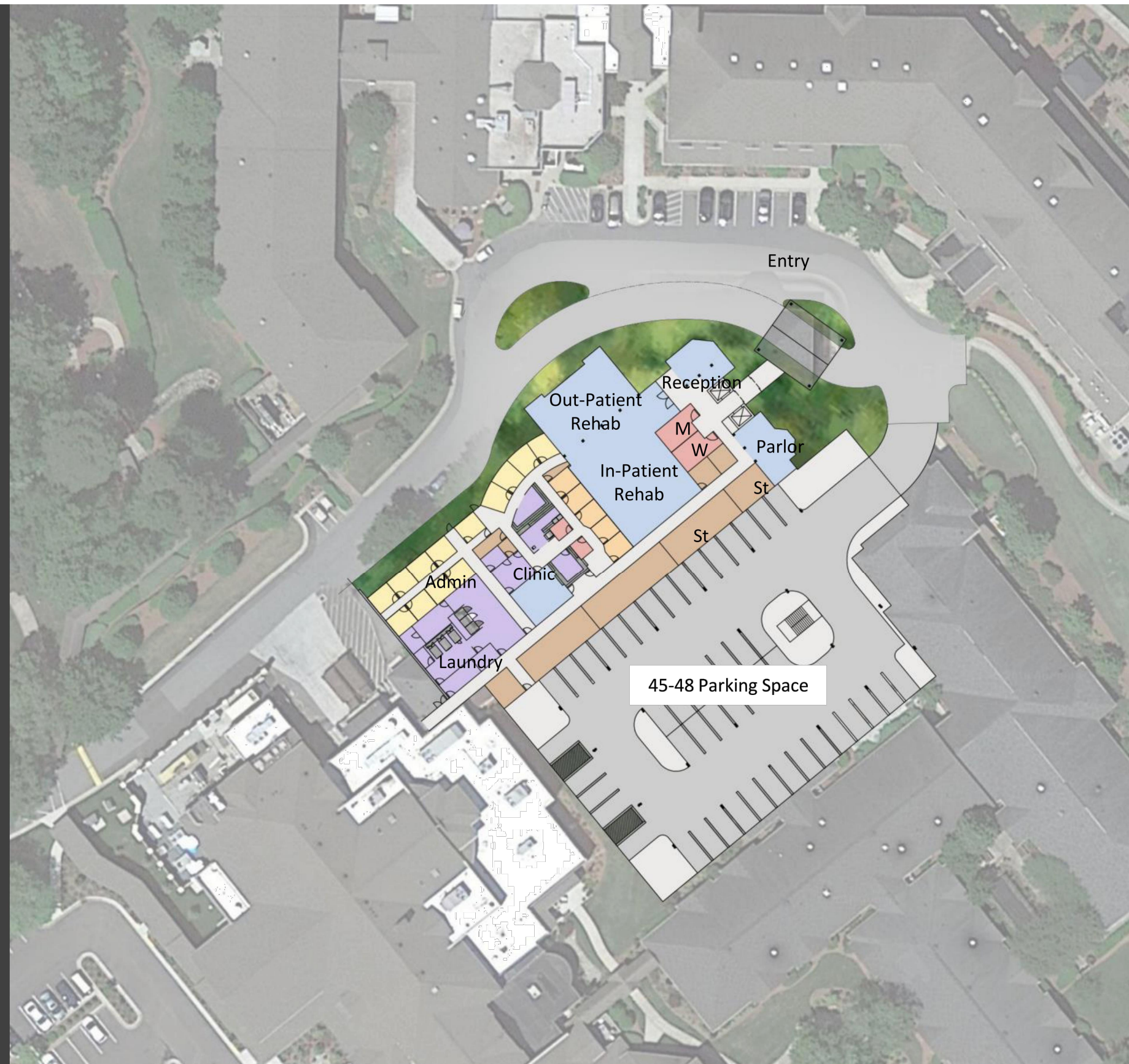
- MAPPING SOURCES:
1. FIELD TOPO AND EXISTING CONDITIONS IN AREA A FROM SURVEY BY CE GROUP, INC. DATED DECEMBER 8, 2015. ALL OTHER TOPOGRAPHICAL INFORMATION FROM NCDOT SOURCES.
  2. COLOR AERIAL PHOTOGRAPHY FROM AE VIEW BY AERIALS EXPRESS DATED MAY 2006.
  3. PARCEL & EXISTING UTILITIES INFORMATION FROM CHATHAM COUNTY GIS.
  4. FLOODPLAIN INFORMATION FROM NCFLOODMAPS.COM, FEMA FIRM # 3710979G00K, DATED FEBRUARY 2, 2008.
  5. BOUNDARY INFORMATION FROM PLAT SLIDES 98-208 AND 2005-421, CHATHAM COUNTY REGISTRY.



Villa Flex Exteriors

## Skilled Nursing Lower Level Concept Plan:

- Covered Entry/Porte  
Cochere for Commons and  
Households
- Entry Living adjacent entry  
and elevators
- Outpatient & Inpatient  
Rehabilitation
- Back of House Support along  
connector to main commons
- Re-use of main kitchen
- Below Grade/Plaza Green  
Parking to provide adjacent  
parking. Staff will still need  
additional parking



## Concept - Skilled Nursing 1st Floor Plan

SFCs