

GALLOWAY RIDGE, INC.
D.B. 1066 PG. 957
P.S. 2003-350

- MAP LEGEND**
- EIP EXISTING IRON PIPE
 - ES EXISTING IRON STAKE
 - IPS IRON PIPE SET
 - CMP COMPUTED POINT
 - ▲ S & E C FLAG

This Survey is of an existing natural feature, such as a watercourse or wetland.
 Surveyor: *Van R. Finch* Date: 1/24/11

GEORGE FREDERICK RIGGSBEE
LUNDAV A. RIGGSBEE
D.B. 683 PG. 826

The certifier that this copy of this plat accurately depicts the boundary of the jurisdiction of Section 404 of the Clean Water Act as determined by the undersigned on this date. Unless there is a change in regulation or published regulations, this determination of Section 404 jurisdiction or our be relied upon for a period not to exceed five years from this date. This determination was made utilizing the 1987 Corps of Engineers Wetlands Definition Manual.

Name: *W.L. Miller*
 Title: *Project Manager*
 Date: 12-21-11

VAN R. FINCH - LAND SURVEYS, P.A.
109 Hillsboro St. Pittsboro, N.C. 27312
FIRM LICENSE #C-513

WILLIAMS TOWNSHIP
SCALE: 1" = 300'
CHATHAM COUNTY, N.C.
DATE: DECEMBER 23, 2010
REVISED: JANUARY 24, 2011



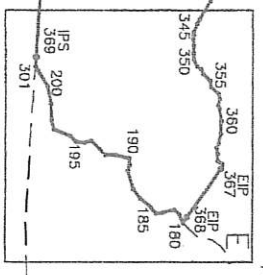
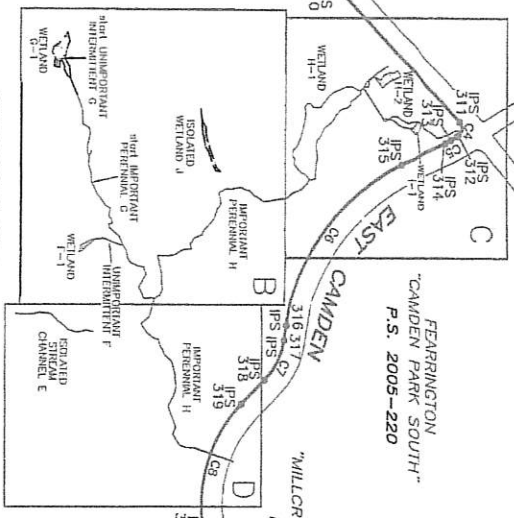
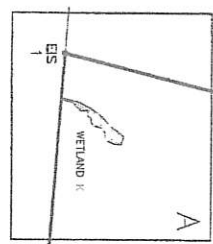
I certify that this map was drawn under my supervision from an actual survey made under my supervision (detailed description recorded in D.B. 646, PG. 243 and D.B. 669, PG. 912); that the boundaries not surveyed are indicated as drawn from information found in Book as shown that the ratio of precision as calculated is 1:37,082 and that this map meets the requirements of The Standards of Practice for Land Surveying in North Carolina (21 NCAC 56.1600), this 24th day of January, 2011.

Van R. Finch
Professional Land Surveyor

**FEARRINGTON P.U.D.
SECTION 10
WETLANDS SURVEY FOR**

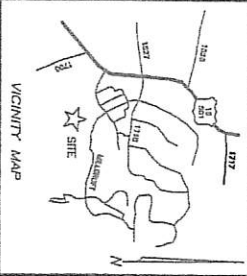
SHEET ONE
T.H. LINGERFELDT
GRACE WARD LINGERFELDT
D.B. JE PG. 245

WADE BARBER, JR.
D.B. 270 PG. 211



- NOTES**
1. Stream Channels and Wetlands shown on this plat were delineated in the field by Soil and Environmental Consultants, P.A.
 2. All distances shown are horizontal ground distances unless otherwise noted.
 3. There are no NCCS monuments within 2000 feet.
 4. See Sheet Two for data tables.
 5. Area computed by coordinate method.

M.P.	27
P.P.	25
2008	22
2009	21
2010	20
2011	19
2012	18
2013	17



(See Sheet Four)

WETLAND F-1		WETLAND G-1		WETLAND J	
MAP#	S&EC#	MAP#	S&EC#	MAP#	S&EC#
90	S5.4	27	W09	102	35
91	S5.5	28	W08	103	20
92	S5.6	29	W07	104	21
93	S5.7	30	W06	105	22
94	S5.8	31	S07	106	23
95	S05	32	W19-907	107	25
96	S5.1	33	W18	108	27
97	S5.2	34	W17	109	28
98	S5.3	35	W16	110	29
		36	W15	111	30
		37	W14	112	31
		38	W13	113	32
		39	W12	114	34
		40	W10		
		43	W04		
		61	S06		

This Survey is of an existing natural feature, such as a watercourse or wetland.

Surveyed *1/24/11* Date

NOTES

1. Stream Channels and Wetlands shown on this plat were delineated in the field by Soil and Environmental Consultants, P.A.
2. All distances shown are horizontal ground distances unless otherwise noted.
3. There are no NCGS monuments within 2000 feet

LINE	BEARING	DISTANCE	LINE	BEARING	DISTANCE	LINE	BEARING	DISTANCE	LINE	BEARING	DISTANCE	LINE	BEARING	DISTANCE
301	N 86°17'39" W	29.00'	338	S 50°25'24" E	32.52'	365	N 35°36'21" E	17.02'	375	N 53°56'48" E	12.97'	392	N 58°38'35" E	166.43'
302	N 86°17'39" W	279.27'	339	S 49°27'54" E	33.99'	366	S 69°20'59" E	12.97'	393	S 69°20'59" E	12.97'	393	S 69°20'59" E	12.97'
303	N 85°32'48" W	50.44'	340	S 47°05'52" E	25.02'	367	S 55°35'40" E	20.00'	394	S 55°35'40" E	20.00'	394	S 55°35'40" E	20.00'
304	N 85°40'15" W	1114.66'	341	S 61°04'34" E	35.56'	368	S 67°52'03" E	25.40'	395	S 67°52'03" E	25.40'	395	S 67°52'03" E	25.40'
305	N 85°40'15" W	1079.26'	342	S 60°11'57" E	34.2	369	S 61°26'08" E	13.54'	396	S 61°26'08" E	13.54'	396	S 61°26'08" E	13.54'
306	N 44°03'48" W	88.86'	343	S 61°11'55" E	22.00'	370	S 67°43'42" E	26.16'	397	S 67°43'42" E	26.16'	397	S 67°43'42" E	26.16'
307	N 73°23'36" E	342.84'	344	S 31°11'55" E	511.44'	371	S 67°43'42" E	8.91'	398	S 67°43'42" E	8.91'	398	S 67°43'42" E	8.91'
308	N 46°49'42" E	511.44'	345	S 31°11'55" E	22.00'	372	S 78°07'35" E	10.80'	399	S 78°07'35" E	10.80'	399	S 78°07'35" E	10.80'
309	N 46°49'42" E	22.00'	346	S 26°18'13" E	140.70'	373	S 88°34'31" E	8.91'	400	S 88°34'31" E	8.91'	400	S 88°34'31" E	8.91'
310	N 31°11'55" E	511.44'	347	S 26°18'13" E	140.70'	374	S 88°34'31" E	10.80'	401	S 88°34'31" E	10.80'	401	S 88°34'31" E	10.80'
311	S 31°11'55" E	22.00'	348	S 46°12'48" E	95.12'	375	S 88°34'31" E	8.91'	402	S 88°34'31" E	8.91'	402	S 88°34'31" E	8.91'
312	S 46°12'48" E	95.12'	349	S 46°12'48" E	95.12'	376	S 88°34'31" E	8.91'	403	S 88°34'31" E	8.91'	403	S 88°34'31" E	8.91'
313	S 82°02'40" E	42.24'	350	S 46°12'48" E	95.12'	377	S 88°34'31" E	8.91'	404	S 88°34'31" E	8.91'	404	S 88°34'31" E	8.91'
314	S 82°02'40" E	42.24'	351	S 46°12'48" E	95.12'	378	S 88°34'31" E	8.91'	405	S 88°34'31" E	8.91'	405	S 88°34'31" E	8.91'
315	S 46°12'48" E	95.12'	352	S 38°13'17" W	2.58'	379	S 88°34'31" E	8.91'	406	S 88°34'31" E	8.91'	406	S 88°34'31" E	8.91'
316	S 46°12'48" E	95.12'	353	S 38°13'17" W	2.58'	380	S 88°34'31" E	8.91'	407	S 88°34'31" E	8.91'	407	S 88°34'31" E	8.91'
317	S 82°02'40" E	42.24'	354	S 68°41'11" E	144.44'	381	S 88°34'31" E	8.91'	408	S 88°34'31" E	8.91'	408	S 88°34'31" E	8.91'
318	S 82°02'40" E	42.24'	355	S 68°41'11" E	144.44'	382	S 88°34'31" E	8.91'	409	S 88°34'31" E	8.91'	409	S 88°34'31" E	8.91'
319	S 80°41'30" E	40.83'	356	S 20°55'42" W	22.28'	383	S 88°34'31" E	8.91'	410	S 88°34'31" E	8.91'	410	S 88°34'31" E	8.91'
320	S 80°41'30" E	40.83'	357	S 14°01'53" E	154.11'	384	S 88°34'31" E	8.91'	411	S 88°34'31" E	8.91'	411	S 88°34'31" E	8.91'
321	S 68°41'11" E	144.44'	358	S 35°46'17" E	33.42'	385	S 88°34'31" E	8.91'	412	S 88°34'31" E	8.91'	412	S 88°34'31" E	8.91'
322	S 68°41'11" E	144.44'	359	S 30°30'16" E	146.84'	386	S 88°34'31" E	8.91'	413	S 88°34'31" E	8.91'	413	S 88°34'31" E	8.91'
323	S 32°3'24" E	2.58'	360	S 68°03'03" E	37.90'	387	S 88°34'31" E	8.91'	414	S 88°34'31" E	8.91'	414	S 88°34'31" E	8.91'
324	S 20°55'42" W	22.28'	361	N 68°03'03" E	37.90'	388	S 88°34'31" E	8.91'	415	S 88°34'31" E	8.91'	415	S 88°34'31" E	8.91'
325	S 20°55'42" W	22.28'	362	N 87°37'17" E	19.37'	389	S 88°34'31" E	8.91'	416	S 88°34'31" E	8.91'	416	S 88°34'31" E	8.91'
326	S 14°01'53" E	154.11'	363	N 87°37'17" E	19.37'	390	S 88°34'31" E	8.91'	417	S 88°34'31" E	8.91'	417	S 88°34'31" E	8.91'
327	S 14°01'53" E	154.11'	364	N 83°52'03" E	16.96'	391	S 88°34'31" E	8.91'	418	S 88°34'31" E	8.91'	418	S 88°34'31" E	8.91'
328	S 35°46'17" E	33.42'	365	N 67°21'04" E	10.40'	392	S 88°34'31" E	8.91'	419	S 88°34'31" E	8.91'	419	S 88°34'31" E	8.91'
329	S 30°30'16" E	146.84'	366	N 81°26'41" E	33.69'	393	S 88°34'31" E	8.91'	420	S 88°34'31" E	8.91'	420	S 88°34'31" E	8.91'
330	S 30°30'16" E	146.84'	367	N 81°26'41" E	33.69'	394	S 88°34'31" E	8.91'	421	S 88°34'31" E	8.91'	421	S 88°34'31" E	8.91'
331	N 68°03'03" E	37.90'	368	N 77°45'23" E	18.77'	395	S 88°34'31" E	8.91'	422	S 88°34'31" E	8.91'	422	S 88°34'31" E	8.91'
332	N 87°37'17" E	19.37'	369	N 77°45'23" E	18.77'	396	S 88°34'31" E	8.91'	423	S 88°34'31" E	8.91'	423	S 88°34'31" E	8.91'
333	N 87°37'17" E	19.37'	370	N 67°21'04" E	10.40'	397	S 88°34'31" E	8.91'	424	S 88°34'31" E	8.91'	424	S 88°34'31" E	8.91'
334	N 83°52'03" E	16.96'	371	N 67°21'04" E	10.40'	398	S 88°34'31" E	8.91'	425	S 88°34'31" E	8.91'	425	S 88°34'31" E	8.91'
335	S 63°33'56" E	17.89'	372	N 81°26'41" E	33.69'	399	S 88°34'31" E	8.91'	426	S 88°34'31" E	8.91'	426	S 88°34'31" E	8.91'
336	S 63°33'56" E	17.89'	373	N 81°26'41" E	33.69'	400	S 88°34'31" E	8.91'	427	S 88°34'31" E	8.91'	427	S 88°34'31" E	8.91'
337	S 48°00'48" E	32.03'	374	S 77°45'23" E	18.77'	401	S 88°34'31" E	8.91'	428	S 88°34'31" E	8.91'	428	S 88°34'31" E	8.91'
338	S 52°04'29" E	27.52'	375	N 77°46'42" E	17.38'	402	S 88°34'31" E	8.91'	429	S 88°34'31" E	8.91'	429	S 88°34'31" E	8.91'
			376	N 77°46'42" E	17.38'	403	S 88°34'31" E	8.91'	430	S 88°34'31" E	8.91'	430	S 88°34'31" E	8.91'
			377	S 89°57'29" E	20.13'	404	S 88°34'31" E	8.91'	431	S 88°34'31" E	8.91'	431	S 88°34'31" E	8.91'

WETLANDS SURVEY FOR SECTION 10

FEARRINGTON P.U.D.

SECTION 10

WILLIAMS TOWNSHIP
CHATHAM COUNTY, N.C.

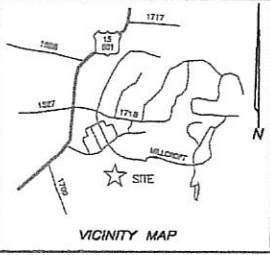
DATE: DECEMBER 23, 2010
REVISED: JANUARY 24, 2011

VAN R. FINCH - LAND SURVEYS, P.A.
109 Hillsboro St. - Hillsboro, N.C. 27312
FIRM LICENSE #6-513



I certify that this map was drawn under my supervision from an actual survey made under my supervision (and description recorded in D.B. 646, Pg. 243 and D.B. 669, Pg. 912). that the boundaries not surveyed are indicated as drawn from information recorded in Book and Page that the ratio of precision as calculated is 1:37,082 and that this map meets the requirements of the Standards of Practice for Land Surveying in North Carolina (21 N.C.A.C. 56.1600), This 24th day of January, 2011.

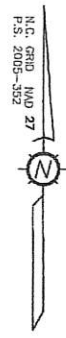
Van R. Finch
Professional Land Surveyor



MAP LEGEND

- EXISTING IRON PIPE
- IRON PIPE SET
- ▲ S & E C FLAG
- ◻ COMPUTED POINT

LINE	BEARING	DISTANCE
1 - 2	S 85°40'15" E	124.30'(tie)
2 - 3	N 17°10'28" E	19.04'
3 - 4	N 14°39'15" E	32.83'
4 - 5	N 26°48'45" E	36.38'
5 - 6	N 35°58'38" E	39.55'
6 - 7	N 48°57'02" E	18.83'
7 - 8	N 47°40'37" E	23.16'
8 - 9	N 35°26'15" E	29.79'
9 - 10	N 43°19'52" E	12.46'
10 - 11	S 70°46'25" E	22.56'
11 - 12	S 02°15'05" E	15.67'
12 - 13	S 21°07'18" W	24.40'
13 - 14	S 54°51'06" W	11.67'
14 - 15	N 88°18'33" W	13.31'
15 - 16	S 60°34'01" W	16.51'
16 - 17	S 12°51'32" W	22.47'
17 - 18	S 42°12'55" W	11.72'
18 - 19	S 80°00'06" W	16.84'
19 - 20	S 32°01'59" W	8.07'
20 - 21	S 89°31'36" W	16.03'
21 - 22	S 03°46'02" E	19.36'
22 - 23	S 40°30'57" W	15.40'
23 - 24	S 49°10'13" W	18.43'
24 - 25	S 14°02'06" W	16.02'
25 - 26	S 17°10'28" W	17.50'
26 - 2	N 85°40'15" W	5.13'

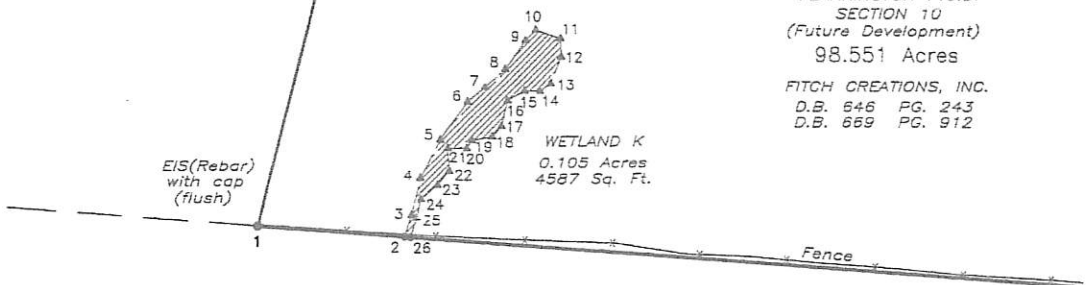


WETLAND K

MAP#	S&EC#	MAP#	S&EC#
3	W20	15	W33
4	W21	16	W34
5	W22	17	W35
6	W24	18	W36
7	W25	19	W37
8	W26	20	W38
9	W27	21	W39
10	W28	22	W40
11	W29	23	W41
12	W30	24	W42
13	W31	25	W43
14	W32		

GALLOWAY RIDGE, INC.
D.B. 1066 PG. 957
P.S. 2003-350

FEARRINGTON P.U.D.
SECTION 10
(Futura Development)
98.551 Acres
FITCH CREATIONS, INC.
D.B. 646 PG. 243
D.B. 659 PG. 912



GEORGE FREDERICK RIGGSBEE
LUNDAY A. RIGGSBEE
D.B. 683 PG. 826

NOTES

- Stream Channels and Wetlands shown on this plat were delineated in the field by Soil and Environmental Consultants, P.A.
- All distances shown are horizontal ground distances unless otherwise noted.
- There are no NCGS monuments within 2000 feet

I certify that this map was drawn under my supervision from an actual survey made under my supervision (detailed description recorded in D.B. 646, PG. 243 and D.B. 659, PG. 912); that the boundaries not surveyed are indicated as drawn from information found in Book 98 shown, that the ratio of precision as calculated is 1:37,082; and that this map meets the requirements of The Standards of Practice for Land Surveying in North Carolina(21 NCAC 56.1600). This 24th day of January, 2011.

Van R. Finch
Professional Land Surveyor

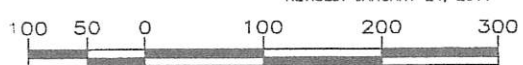


This Survey is of an existing natural feature, such as a watercourse or wetland.
Van R. Finch 1/24/11
Surveyor Date

SHEET THREE
SECTION A
WETLANDS SURVEY FOR

**FEARRINGTON P.U.D.
SECTION 10 PHASE 3**

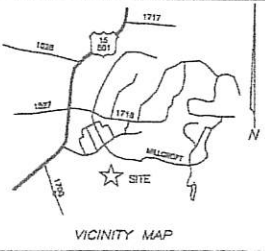
WILLIAMS TOWNSHIP CHATHAM COUNTY, N.C.
SCALE: 1" = 100' DATE: DECEMBER 23, 2010
REVISED: JANUARY 24, 2011



VAN R. FINCH - LAND SURVEYS, P.A.
109 Hillsboro St. Pittsboro, N.C. 27312
FIRM LICENSE #C-513

Name *M. M. H.*
Title *Project Manager*
Date 12-21-11

T:\1010-PALE-WETLANDS.DWG SOUTH CREEK.CRD



N.C. GEN. REG. 27
P.S. 2009-352



LINE	BEARING	DISTANCE	LINE	BEARING	DISTANCE
115 - 116	S 62°36'58" E	11.58'	76 - 77	N 54°20'05" E	18.32'
116 - 117	S 45°14'58" E	25.74'	77 - 78	N 83°45'05" E	16.74'
117 - 118	S 24°37'56" E	29.52'	78 - 79	N 62°50'38" E	14.79'
118 - 119	S 40°56'52" E	18.81'	79 - 80	N 30°30'42" E	7.85'
119 - 120	S 06°02'38" E	16.63'	80 - 81	N 22°11'26" E	22.69'
120 - 121	S 10°46'31" E	32.02'	81 - 82	N 11°43'13" E	12.82'
121 - 122	S 06°14'27" E	18.26'	82 - 83	N 70°36'49" E	21.67'
122 - 123	S 34°47'56" W	14.37'	83 - 84	S 60°47'43" E	28.67'
123 - 124	S 27°01'10" W	15.33'	84 - 85	S 60°24'21" E	12.82'
124 - 125	S 44°16'44" W	22.46'	85 - 86	N 63°38'02" E	19.07'
125 - 126	S 07°13'51" W	6.07'	86 - 87	N 67°14'48" E	12.69'
126 - 127	S 25°42'32" W	20.20'	87 - 88	N 25°18'42" E	6.79'
127 - 128	S 12°45'02" E	23.49'	88 - 89	N 09°21'32" W	17.17'
128 - 129	S 02°13'21" E	21.78'	89 - 147	N 27°32'58" E	9.16'
129 - 130	S 32°48'28" E	21.63'	90 - 91	N 67°28'24" W	11.43'
130 - 131	N 76°41'31" E	30.59'	91 - 92	N 84°57'13" W	7.84'
131 - 132	S 50°24'30" E	17.81'	92 - 93	N 37°10'24" W	5.78'
132 - 133	S 73°19'31" E	28.42'	93 - 94	N 28°08'55" W	29.05'
133 - 134	S 47°35'58" E	18.74'	94 - 95	N 04°33'53" W	13.16'
134 - 135	S 47°39'42" E	24.86'	95 - 96	S 35°49'52" E	19.67'
135 - 136	S 57°39'57" E	17.99'	96 - 97	S 41°54'52" E	24.10'
136 - 137	S 23°35'05" E	20.95'	97 - 98	S 52°17'38" E	6.12'
137 - 138	S 52°26'33" E	21.92'	98 - 99	S 15°03'57" E	9.89'
			95 - 99	N 08°48'14" W	21.37'
			99 - 100	N 23°16'50" E	24.97'
			100 - 101	N 21°15'01" E	23.03'
			101 - 76	N 18°14'53" E	12.53'
			102 - 103	S 06°22'24" W	12.95'
			103 - 104	S 60°06'58" W	7.28'
			104 - 105	S 70°21'08" W	54.30'
			105 - 106	S 60°24'28" W	15.56'
			106 - 107	S 77°07'05" W	48.80'
			107 - 108	S 84°42'33" W	58.08'
			108 - 109	N 09°45'27" E	2.96'
			109 - 110	N 87°21'33" E	15.75'
			110 - 111	N 76°45'18" E	24.52'
			111 - 112	N 51°40'06" E	12.55'
			112 - 113	N 84°22'46" E	38.01'
			113 - 114	N 70°13'27" E	84.02'
			114 - 102	N 49°12'44" E	14.51'
			102 - 129	N 71°30'48" E	52.87'(tie)

LINE	BEARING	DISTANCE
27 - 28	N 77°03'50" E	6.43'
28 - 29	N 77°59'46" E	21.85'
29 - 30	S 69°34'19" E	17.93'
30 - 31	S 75°21'16" E	32.73'
31 - 32	S 08°16'49" E	9.90'
32 - 33	S 63°44'20" E	10.85'
33 - 34	S 89°22'44" E	14.02'
34 - 35	S 08°02'30" W	16.77'
35 - 36	N 79°01'23" W	24.31'
36 - 37	S 63°15'51" W	20.22'
37 - 38	N 70°15'37" W	15.22'
38 - 39	N 35°12'00" W	17.68'
39 - 40	N 49°27'13" W	30.65'
40 - 27	N 82°07'04" W	10.40'
32 - 41	N 67°52'05" E	22.16'
41 - 42	S 86°50'58" E	9.12'
42 - 43	N 43°23'57" E	11.14'
43 - 44	N 82°57'04" E	10.14'
44 - 45	N 34°26'41" E	10.79'
31 - 45	N 64°47'35" E	12.78'
45 - 46	N 32°46'21" E	4.42'
46 - 47	N 64°47'56" E	11.96'
47 - 48	N 86°57'43" E	30.56'
48 - 49	N 75°48'27" E	4.70'
49 - 50	N 66°35'54" E	53.49'
50 - 51	N 67°11'22" E	21.68'
51 - 52	N 73°12'23" E	15.01'
52 - 53	N 87°34'35" E	19.97'
53 - 54	N 89°16'01" E	21.10'
54 - 55	N 32°12'53" E	22.23'
55 - 56	N 76°32'26" E	17.63'
56 - 57	S 71°39'06" E	20.68'
57 - 58	S 81°13'39" E	11.37'
58 - 59	S 86°16'24" E	18.30'
59 - 60	N 68°12'15" E	16.19'
61 - 60	S 69°37'04" E	17.35'
60 - 62	S 87°23'01" E	21.24'
62 - 63	N 78°41'53" E	18.58'
63 - 64	N 80°57'38" E	13.45'
64 - 65	N 84°53'03" E	22.86'
65 - 66	N 54°20'36" E	12.09'
66 - 67	N 67°57'21" E	21.57'
67 - 68	N 51°50'02" E	38.85'
68 - 69	N 33°35'10" E	18.26'
69 - 70	S 75°33'39" E	21.36'
70 - 71	N 49°18'25" E	12.82'
71 - 72	N 80°11'28" E	11.11'
72 - 73	S 17°11'41" E	9.79'
73 - 74	N 86°37'17" E	9.57'
74 - 75	N 42°35'24" E	38.94'
75 - 76	N 66°20'04" E	27.99'

FEARRINGTON P.U.D.
SECTION 10
(Future Development)
98.551 Acres

FITCH CREATIONS, INC.
D.B. 646 PG. 243
D.B. 669 PG. 912

ISOLATED WETLAND J
0.033 Acres
1426 Sq. Ft.

LINE	BEARING	DISTANCE
138 - 139	N 76°09'10" E	14.84'
139 - 140	S 04°33'19" E	25.12'
140 - 141	S 30°23'25" E	27.99'
141 - 142	S 13°16'07" E	18.03'
142 - 143	S 01°51'28" W	30.04'
143 - 144	N 78°15'20" E	54.64'
144 - 145	N 87°00'09" E	43.15'
145 - 146	S 65°13'52" E	15.35'
146 - 147	S 34°10'14" E	19.55'
147 - 148	S 76°10'27" E	43.42'
148 - 149	S 68°59'19" E	10.25'

UNIMPORTANT INTERMITTENT STREAM CHANNEL E
458 Linear Feet (total)

IMPORTANT PERENNIAL STREAM CHANNEL G
443 Linear Feet (total)

IMPORTANT PERENNIAL STREAM CHANNEL H
1260 Linear Feet (115 - 165)
see also Sheet Seven

UNIMPORTANT INTERMITTENT STREAM CHANNEL F
82 Linear Feet (total)

WETLAND F-1
0.011 Acres
495 Sq. Ft.

WETLAND G-1
0.056 Acres
2428 Sq. Ft.

NOTES

1. Stream Channels and Wetlands shown on this plat were delineated in the field by Soil and Environmental Consultants, P.A.
2. All distances shown are horizontal ground distances unless otherwise noted.
3. There are no NCGS monuments within 2000 feet

This Survey is of an existing natural feature, such as a watercourse or wetland.

Van R. Finch
Surveyor
1/24/11
Date



LEGEND

- EXISTING IRON PIPE
- IRON PIPE SET
- ▲ S & E C FLAG
- COMPUTED POINT
- ⊙ SANITARY SEWER MANHOLE

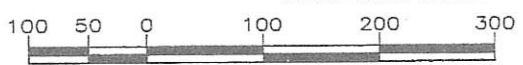
SHEET FOUR
SECTION B

WETLANDS SURVEY FOR

FEARRINGTON P.U.D.
SECTION 10 PHASE 3

WILLIAMS TOWNSHIP
SCALE: 1" = 100'

CHATHAM COUNTY, N.C.
DATE: DECEMBER 23, 2010
REVISED: JANUARY 24, 2011



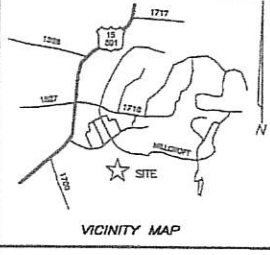
VAN R. FINCH - LAND SURVEYS, P.A.
109 Hillsboro St. Pittsboro, N.C. 27312
FIRM LICENSE #C-513

I certify that this map was drawn under my supervision from an actual survey made under my supervision (deed description recorded in D.B. 646, PG. 243 and D.B. 669, PG. 912); that the boundaries not surveyed are indicated as drawn from information found in Book as shown, that the ratio of precision as calculated is 1:37,082; and that this map meets the requirements of The Standards of Practice for Land Surveying in North Carolina(21 NCAC 56.1600). This 24th day of January, 2011.

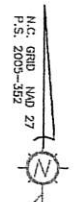
Van R. Finch
Professional Land Surveyor

This certifies that this copy of this plat accurately depicts the boundary of the jurisdiction of Section 404 of the Clean Water Act as determined by the undersigned on this date. Unless there is a change in law or our published regulations, this determination of Section 404 jurisdiction may be relied upon for a period not to exceed five years from this date. This determination was made utilizing the 1987 Corps of Engineers Wetlands Delineation Manual.

Name: Mahe M. Miller
Title: Project Mgr
Date: 12-21-11



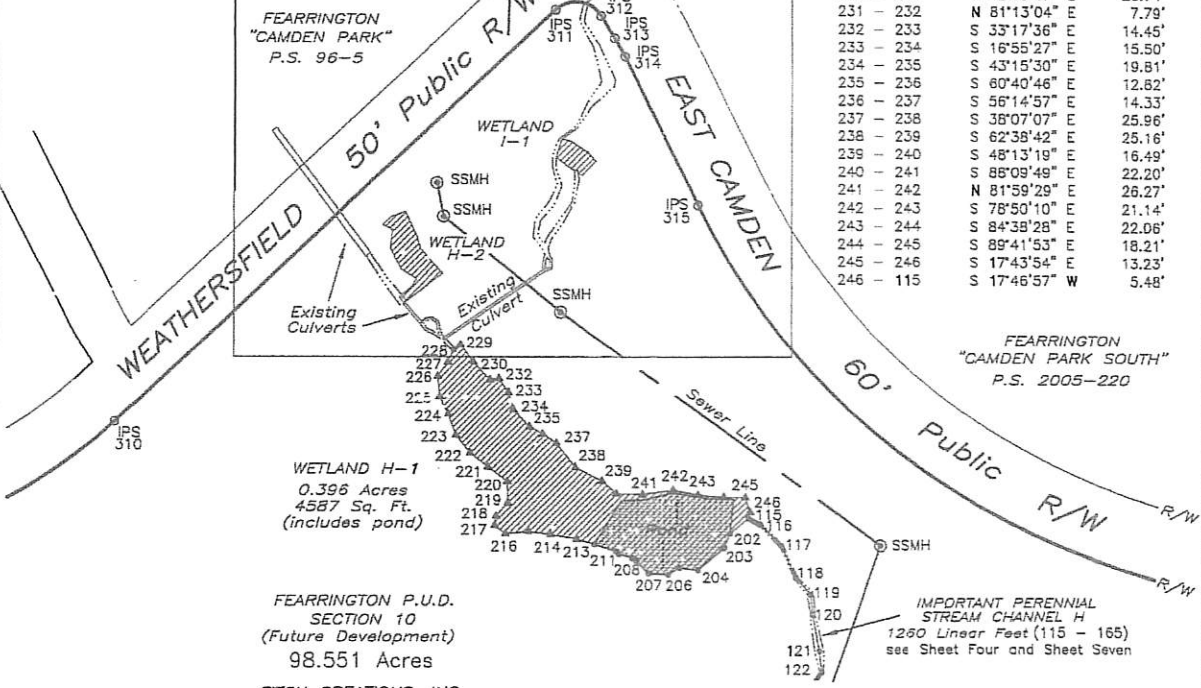
- MAP LEGEND**
- EXISTING IRON PIPE
 - IRON PIPE SET
 - ▲ S & E C FLAG
 - COMPUTED POINT
 - ⊙ SANITARY SEWER MANHOLE



LINE	BEARING	DISTANCE
115 - 202	S 49°18'08" W	19.62'
202 - 203	S 23°22'22" W	13.38'
203 - 204	S 50°15'52" W	29.12'
204 - 205	N 83°13'44" W	15.52'
205 - 206	S 59°51'28" W	11.09'
206 - 207	N 86°34'11" W	16.62'
207 - 208	N 42°52'22" W	15.09'
208 - 209	N 62°35'46" W	4.41'
209 - 210	N 71°36'34" W	11.78'
210 - 211	N 48°46'09" W	3.16'
211 - 212	N 71°12'53" W	18.98'
212 - 213	N 73°39'24" W	15.71'
213 - 214	N 79°53'24" W	22.75'
214 - 215	N 82°01'33" W	18.67'
215 - 216	S 83°45'02" W	19.62'
216 - 217	N 52°34'41" W	11.83'
217 - 218	N 09°28'53" E	6.01'
218 - 219	N 42°07'29" E	14.89'
219 - 220	N 00°15'37" W	18.24'
220 - 221	N 54°01'13" W	20.82'
221 - 222	N 52°23'23" W	19.50'
222 - 223	N 38°50'39" W	19.49'
223 - 224	N 20°20'28" W	19.24'
224 - 225	N 27°35'01" W	16.69'
225 - 226	N 03°00'55" W	17.69'
226 - 227	N 34°55'54" E	14.49'
227 - 228	N 26°15'12" E	11.63'
228 - 229	N 53°11'01" E	7.07'
229 - 230	S 37°33'46" E	18.29'
230 - 231	S 42°59'47" E	20.74'
231 - 232	N 81°13'04" E	7.79'
232 - 233	S 33°17'36" E	14.45'
233 - 234	S 16°55'27" E	15.50'
234 - 235	S 43°15'30" E	19.81'
235 - 236	S 60°40'46" E	12.62'
236 - 237	S 56°14'57" E	14.33'
237 - 238	S 38°07'07" E	25.96'
238 - 239	S 62°38'42" E	25.16'
239 - 240	S 48°13'19" E	16.49'
240 - 241	S 88°09'49" E	22.20'
241 - 242	N 81°59'29" E	26.27'
242 - 243	S 78°50'10" E	21.14'
243 - 244	S 84°38'28" E	22.06'
244 - 245	S 89°41'53" E	18.21'
245 - 246	S 17°43'54" E	13.23'
246 - 115	S 17°46'57" W	5.48'

WETLAND H-1

MAP#	S&EC#	MAP#	S&EC#
213	tteow-16	231	Stk33
214	Stk14	232	Stk32
215	Stk13	233	Stk31
216	Stk12	234	Stk30
217	Stk11	235	Stk29
218	Stk10	236	Stk27
219	Stk09	237	Stk26
220	Stk08	238	Stk25
221	Stk07	239	Stk24
222	Stk06	240	Stk23
223	Stk05	241	Stk22
224	Stk04	242	Stk21
225	Stk03	243	Stk20
226	Stk02	244	Stk19
227	Stk01	245	Stk18
229	Stk35	246	Stk17
230	Stk34		



FEARRINGTON P.U.D.
SECTION 10
(Future Development)
98.551 Acres

FITCH CREATIONS, INC.
D.B. 646 PG. 243
D.B. 669 PG. 912

- NOTES**
- Stream Channels and Wetlands shown on this plat were delineated in the field by Soil and Environmental Consultants, P.A.
 - All distances shown are horizontal ground distances unless otherwise noted.
 - There are no NCGS monuments within 2000 feet

I certify that this map was drawn under my supervision from an actual survey made under my supervision (deed description recorded in D.B. 648, PG. 243 and D.B. 669, PG. 912); that the boundaries not surveyed are indicated as drawn from information found in Book as shown, that the ratio of precision as calculated is 1:37,062; and that this map meets the requirements of The Standards of Practice for Land Surveying in North Carolina(21 NCAC 56.1600). This 24th day of January, 2011



This Survey is of an existing natural feature, such as a watercourse or wetland.

Van R. Finch
Surveyor

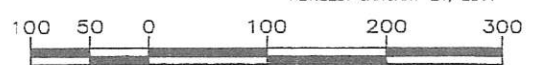
1-24-11
Date

SHEET FIVE
SECTION C-1

**WETLANDS SURVEY FOR
FEARRINGTON P.U.D.
SECTION 10 PHASE 3**

WILLIAMS TOWNSHIP
SCALE: 1" = 100'

CHATHAM COUNTY, N.C.
DATE: DECEMBER 23, 2010
REVISED: JANUARY 24, 2011

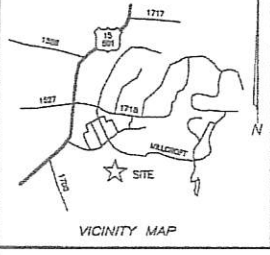


VAN R. FINCH - LAND SURVEYS, P.A.
109 Hillsboro St. Pittsboro, N.C. 27312
FIRM LICENSE #C-513

This certifies that this copy of this plat accurately depicts the boundary of the jurisdiction of Section 404 of the Clean Water Act as determined by the undersigned on this date. Unless there is a change in law or our published regulations, this determination of Section 404 jurisdiction may be relied upon for a period not to exceed five years from this date. This determination was made utilizing the 1987 Corps of Engineers Wetlands Delineation Manual.

Name *Mark McMill*
Title Project Manager
Date 12-21-11

P:\10-1713-BELMOUNT\10 SOUTHREEK.DWG



LINE	BEARING	DISTANCE	LINE	BEARING	DISTANCE
276 - 277	N 39°13'18" E	18.77'	293 - 294	N 51°31'19" W	14.74'
277 - 278	N 23°00'49" E	15.52'	294 - 280	N 44°03'57" W	4.99'
278 - 279	N 17°38'30" W	14.70'	292 - 295	S 06°17'16" E	8.45'
279 - 280	N 00°04'29" W	11.58'	295 - 296	S 09°49'19" W	18.78'
280 - 281	N 20°19'32" E	14.39'	296 - 297	S 31°52'07" W	17.96'
281 - 282	N 53°14'17" E	17.20'	297 - 298	S 36°40'07" W	8.73'
282 - 283	N 30°35'16" E	22.77'	298 - 299	S 34°23'47" W	9.39'
283 - 284	N 38°46'01" E	24.06'	299 - 274	S 20°25'55" W	9.38'
284 - 285	N 18°25'00" W	33.25'	274 - 273	S 15°07'03" E	5.44'
285 - 286	N 28°53'24" W	23.59'	273 - 400	S 38°40'02" E	5.38'
286 - 287	N 12°30'00" E	15.50'	400 - 401	S 01°19'16" W	7.10'
287 - 312	S 49°04'35" E	16.75'(tie)	401 - 270	S 69°02'48" W	6.12'
281 - 288	S 78°35'15" E	8.66'			
288 - 289	S 57°10'29" E	18.07'			
289 - 290	S 41°01'41" E	9.82'			
290 - 291	S 43°42'08" W	16.96'			
291 - 292	N 49°36'38" W	6.75'			
292 - 293	N 80°21'21" W	3.30'			

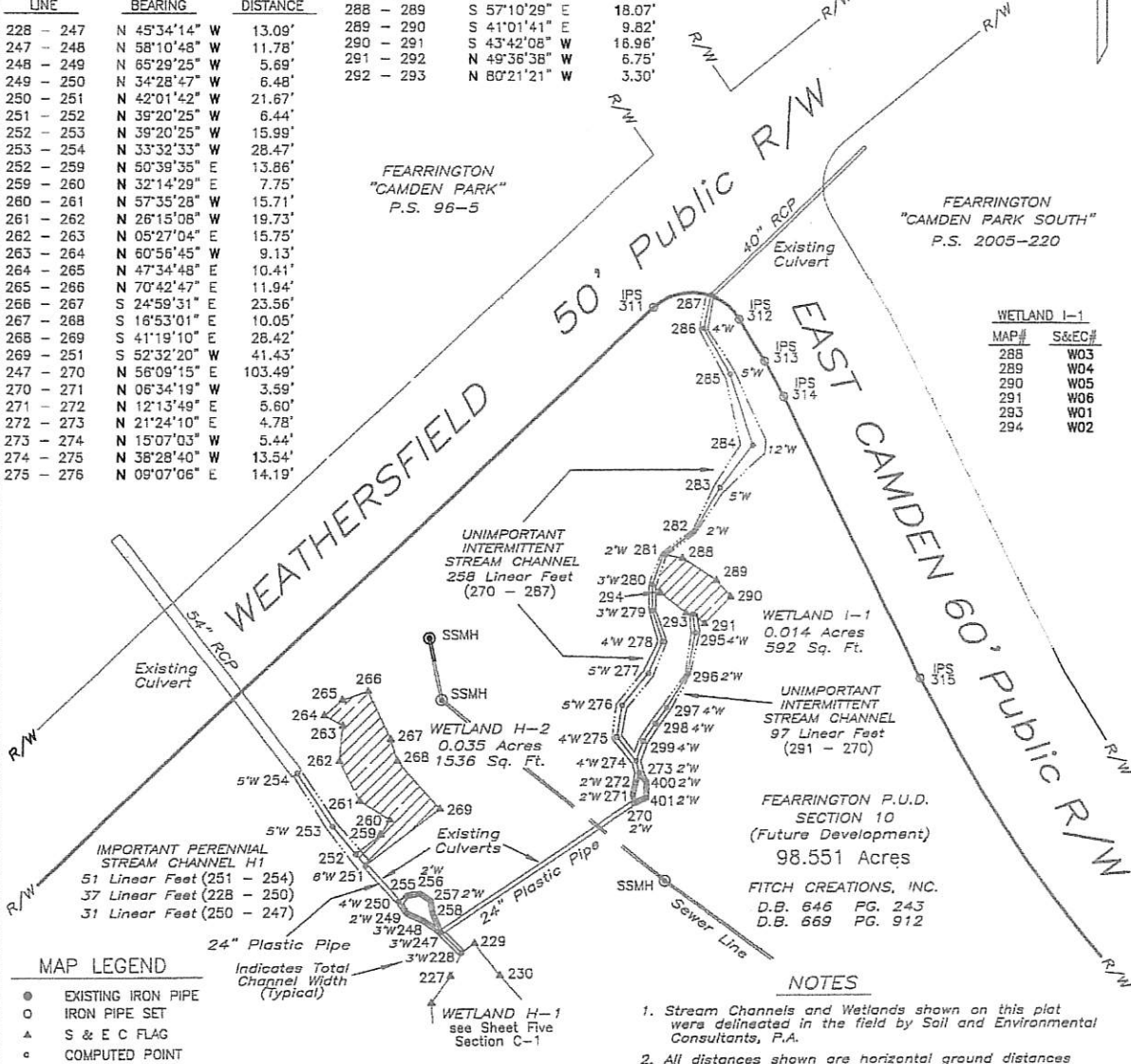
LINE	BEARING	DISTANCE
228 - 247	N 45°34'14" W	13.09'
247 - 248	N 58°10'48" W	11.78'
248 - 249	N 65°29'25" W	5.69'
249 - 250	N 34°28'47" W	6.48'
250 - 251	N 42°01'42" W	21.67'
251 - 252	N 39°20'25" W	6.44'
252 - 253	N 39°20'25" W	15.99'
253 - 254	N 33°32'33" W	28.47'
252 - 259	N 50°39'35" E	13.86'
259 - 260	N 32°14'29" E	7.75'
260 - 261	N 57°35'28" W	15.71'
261 - 262	N 26°15'08" W	19.73'
262 - 263	N 05°27'04" E	15.75'
263 - 264	N 60°56'45" W	9.13'
264 - 265	N 47°34'48" E	10.41'
265 - 266	N 70°42'47" E	11.94'
266 - 267	S 24°59'31" E	23.56'
267 - 268	S 16°53'01" E	10.05'
268 - 269	S 41°19'10" E	28.42'
269 - 251	S 52°32'20" W	41.43'
247 - 270	N 56°09'15" E	103.49'
270 - 271	N 06°34'19" W	3.59'
271 - 272	N 12°13'49" E	5.60'
272 - 273	N 21°24'10" E	4.78'
273 - 274	N 15°07'03" W	5.44'
274 - 275	N 38°28'40" W	13.54'
275 - 276	N 09°07'06" E	14.19'

FEARRINGTON
"CAMDEN PARK"
P.S. 96-5

FEARRINGTON
"CAMDEN PARK SOUTH"
P.S. 2005-220

WETLAND I-1

MAP#	S&EC#
288	W03
289	W04
290	W05
291	W06
293	W01
294	W02



MAP LEGEND

- EXISTING IRON PIPE
- IRON PIPE SET
- ▲ S & E C FLAG
- COMPUTED POINT
- ⊙ SANITARY SEWER MANHOLE

I certify that this map was drawn under my supervision from an actual survey made under my supervision (deed description recorded in D.B. 646, PG. 243 and D.B. 669, PG. 912); that the boundaries not surveyed are indicated as drawn from information found in Book 1: 37,082; and that this map meets the requirements of The Standards of Practice for 2507 Land Surveying in North Carolina (21 N.C.A.C. 56.100). This 24th day of January, 2011.

Van R. Finch
Professional Land Surveyor



WETLAND H-2

MAP#	S&EC#
259	W18
260	W17
261	W16
262	W15
263	W14
264	W13
265	W12
266	W11
267	W10
268	W09
269	W08

- NOTES
- Stream Channels and Wetlands shown on this plot were delineated in the field by Soil and Environmental Consultants, P.A.
 - All distances shown are horizontal ground distances unless otherwise noted.
 - There are no NCGS monuments within 2000 feet

This Survey is of an existing natural feature, such as a watercourse or wetland.

Van R. Finch 1/24/11
Surveyor Date

SHEET SIX
SECTION C-2

WETLANDS SURVEY FOR
**FEARRINGTON P.U.D.
SECTION 10 PHASE 3**

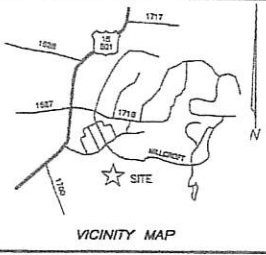
WILLIAMS TOWNSHIP CHATHAM COUNTY, N.C.
SCALE: 1" = 50' DATE: DECEMBER 23, 2010
REVISED: JANUARY 24, 2011



VAN R. FINCH - LAND SURVEYS, P.A.
109 Hillsboro St. Pittsboro, N.C. 27312
FIRM LICENSE #C-513

FIG. 10 - 015 - WETLANDS DWS SOUTHREEK.ORD

Name *M. J. Miller*
Title *Project Mgr*
Date *12-21-11*



MAP LEGEND

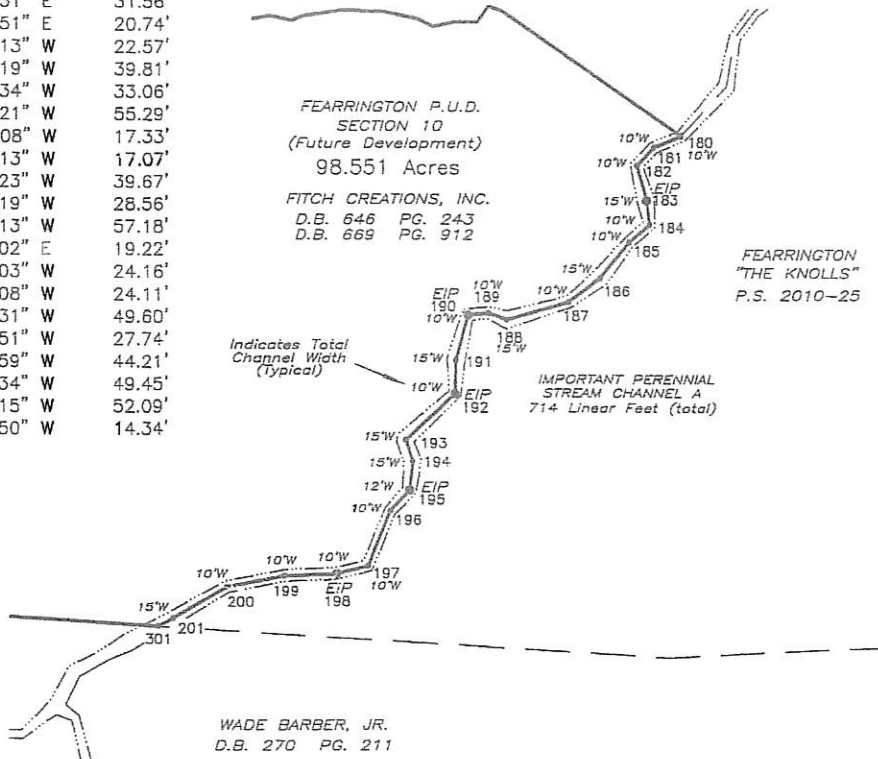
- EXISTING IRON PIPE
- IRON PIPE SET
- ▲ S & E C FLAG
- COMPUTED POINT

N.C. GRID NOV 27
P.S. 2005-382



FEARRINGTON P.U.D.
SECTION 10
PHASE 1 AND 2
FITCH CREATIONS, INC.
D.B. 646 PG. 243
D.B. 669 PG. 912

LINE	BEARING	DISTANCE
180 - 181	S 67°52'03" W	25.40'
181 - 182	S 43°42'22" W	20.62'
182 - 183	S 15°07'31" E	31.56'
183 - 184	S 07°22'51" E	20.74'
184 - 185	S 49°44'13" W	22.57'
185 - 186	S 39°52'19" W	39.81'
186 - 187	S 53°07'34" W	33.06'
187 - 188	S 73°46'21" W	55.29'
188 - 189	N 70°14'08" W	17.33'
189 - 190	S 84°25'13" W	17.07'
190 - 191	S 14°26'23" W	39.67'
191 - 192	S 01°19'19" W	28.56'
192 - 193	S 46°33'13" W	57.18'
193 - 194	S 17°22'02" E	19.22'
194 - 195	S 06°07'03" W	24.16'
195 - 196	S 42°23'08" W	24.11'
196 - 197	S 22°28'31" W	49.60'
197 - 198	S 76°09'51" W	27.74'
198 - 199	S 87°49'59" W	44.21'
199 - 200	S 78°32'34" W	49.45'
200 - 201	S 59°21'15" W	52.09'
201 - 301	S 60°35'50" W	14.34'



NOTES

1. Stream Channels and Wetlands shown on this plot were delineated in the field by Soil and Environmental Consultants, P.A.
2. All distances shown are horizontal ground distances unless otherwise noted.
3. There are no NCGS monuments within 2000 feet

I certify that this map was drawn under my supervision from an actual survey made under my supervision (deed description recorded in D.B. 646, PG. 243 and D.B. 669, PG. 912); that the boundaries not surveyed are indicated as drawn from information found in Book as shown, that the ratio of precision as calculated is 1:37,062; and that this map meets the requirements of The Standards of Practice for Land Surveying in North Carolina (21 NCAC 56.1600). This 24th day of January, 2011.

Van R. Finch
Professional Land Surveyor

This Survey is of an existing natural feature, such as a watercourse or wetland.

Van R. Finch 1/24/11
Surveyor Date

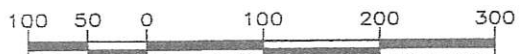


SHEET EIGHT
SECTION E
WETLANDS SURVEY FOR

**FEARRINGTON P.U.D.
SECTION 10 PHASE 3**

WILLIAMS TOWNSHIP
SCALE: 1" = 100'

CHATHAM COUNTY, N.C.
DATE: DECEMBER 23, 2010
REVISED: JANUARY 24, 2011



VAN R. FINCH - LAND SURVEYS, P.A.
109 Hillsboro St. Pittsboro, N.C. 27312
FIRM LICENSE #C-513