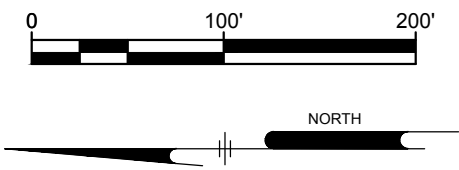
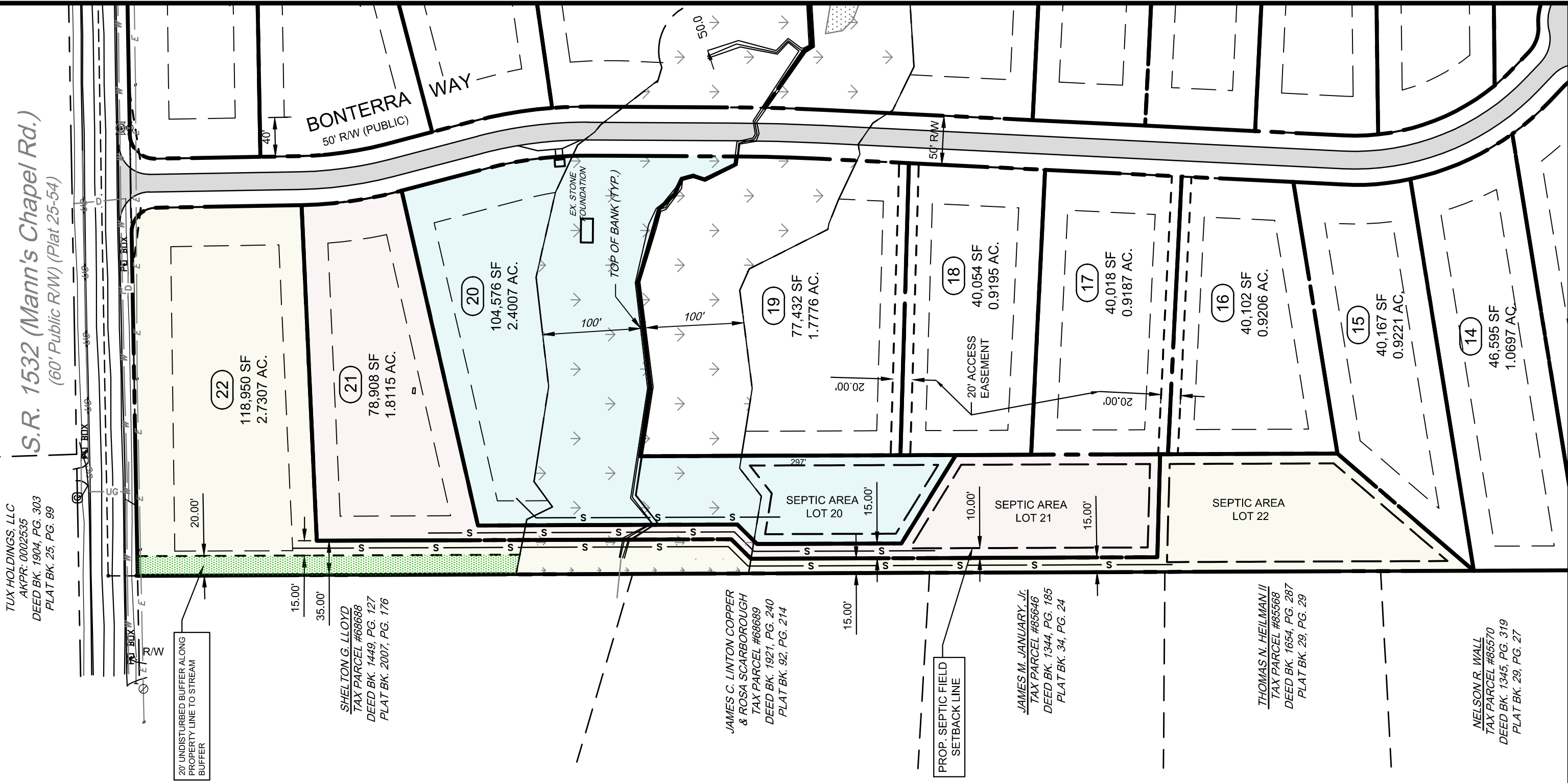


L:\PROJECTS\DLAZ1701-MANN'S CHAPEL RD SUBDIVISION\DESIGN, PUBLISH\EXH-A.DWG
 PLOTTED: 6/25/2018 11:27:13 AM BY: DONALD CHITTY_PLOTSTYLE: PENNONI NCS.STB, PROJECT STATUS: MAJOR SUBDIVISION APPROVAL



PENNONI ASSOCIATES INC.
 1900 Market Street, Suite 300
 Philadelphia, PA 19103
 T 215.222.3000 F 215.222.3588

ALL DOCUMENTS PREPARED BY PENNONI ASSOCIATES ARE INSTRUMENTS OF SERVICE IN RESPECT OF THE PROJECT. THEY ARE NOT INTENDED OR REPRESENTED TO BE SUITABLE FOR REUSE BY OWNER OR OTHERS ON THE EXTENSIONS OF THE PROJECT OR ON ANY OTHER PROJECT. ANY REUSE WITHOUT WRITTEN VERIFICATION OR ADAPTATION BY PENNONI ASSOCIATES FOR THE SPECIFIC PURPOSE INTENDED WILL BE AT OWNERS SOLE RISK AND WITHOUT LIABILITY OR LEGAL EXPOSURE TO PENNONI ASSOCIATES; AND OWNER SHALL INDEMNIFY AND HOLD HARMLESS PENNONI ASSOCIATES FROM ALL CLAIMS, DAMAGES, LOSSES AND EXPENSES ARISING OUT OF OR RESULTING THEREFROM.

BONTERRA SUBDIVISION
 3954 MANN'S CHAPEL ROAD
 CHAPEL HILL, NC 27516

**SEPTIC AREA EXHIBIT
 FOR PROPOSED LOTS 20, 21 & 22**

IDEAL CAPITAL GROUP, LLC
 2100 COOK RIDGE COURT
 RALEIGH, NC 27615

PROJECT	DLAZ1701
DATE	2018-06-25
DRAWING SCALE	1" = 100'
DRAWN BY	DMC
APPROVED BY	PCB
EXH-A	
SHEET 1 OF 1	