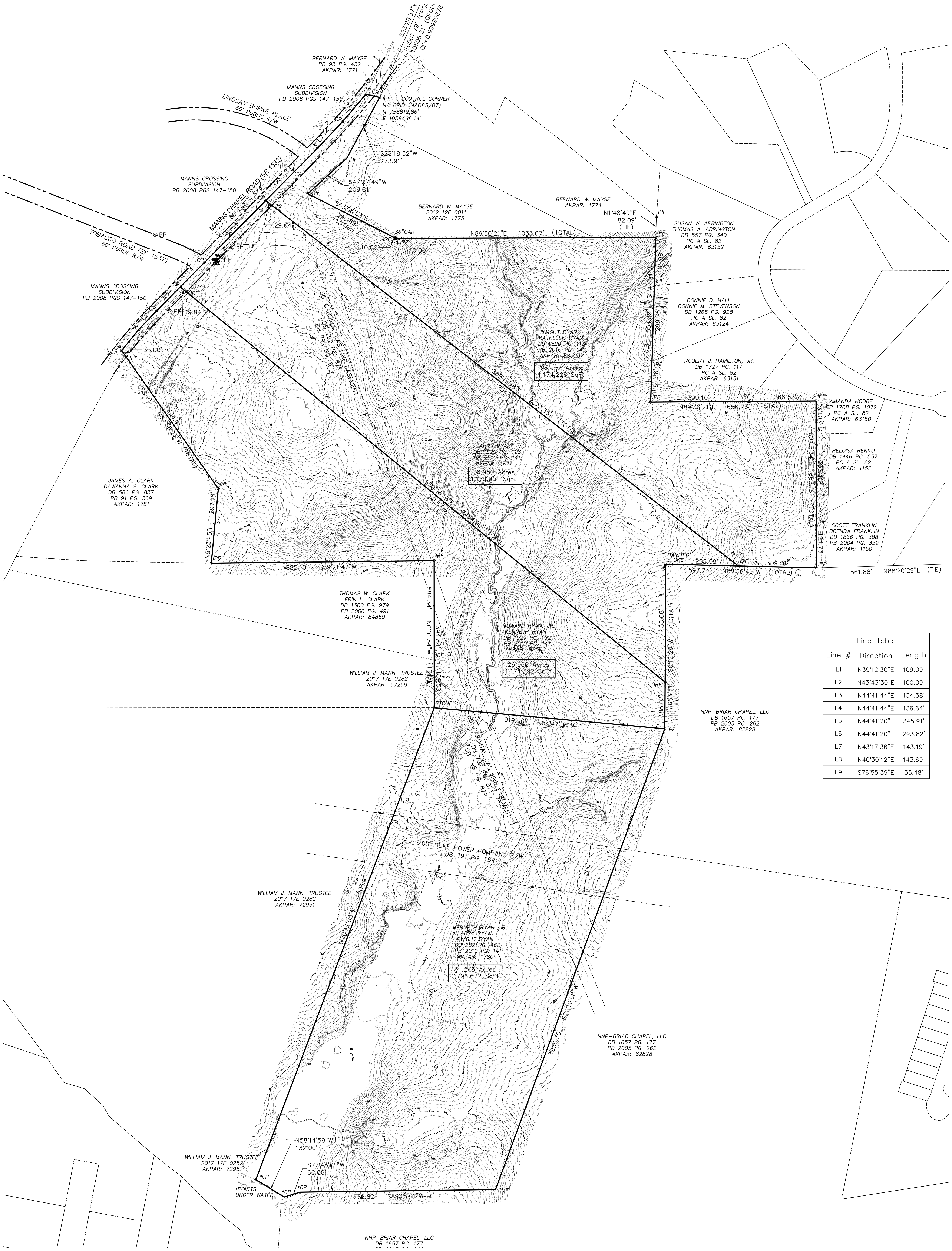


# TOPOGRAPHIC MAP



Line Table

Line #	Direction	Length
L1	N39°12'30"E	109.09'
L2	N43°43'30"E	100.09'
L3	N44°41'44"E	134.58'
L4	N44°41'44"E	136.64'
L5	N44°41'20"E	345.91'
L6	N44°41'20"E	293.82'
L7	N43°17'36"E	143.19'
L8	N40°30'12"E	143.69'
L9	S76°55'39"E	55.48'