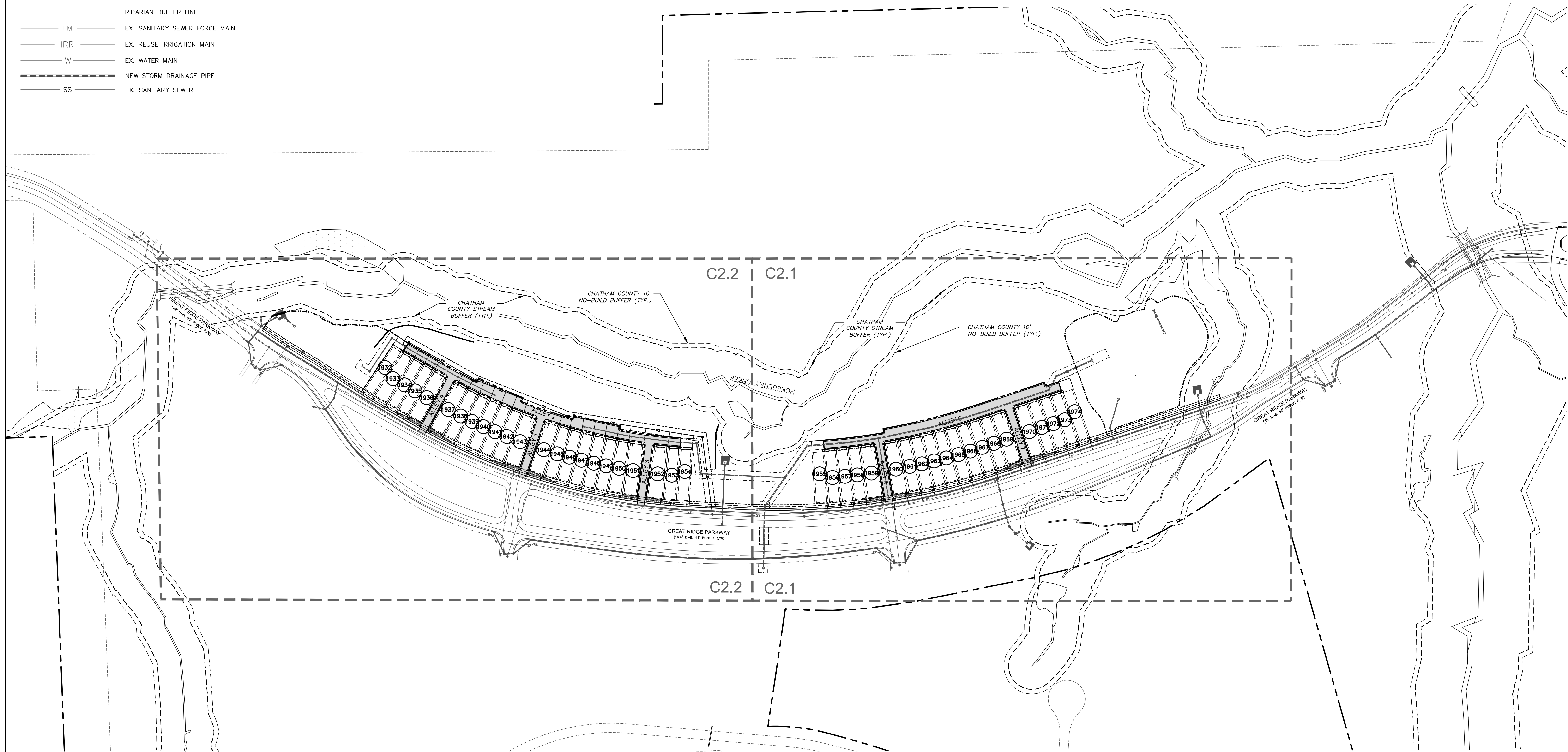
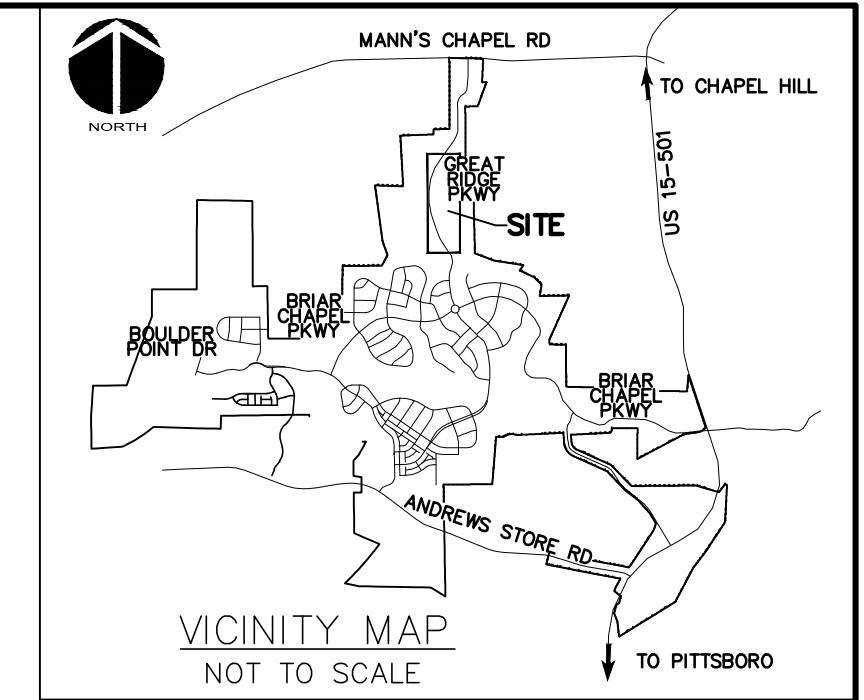
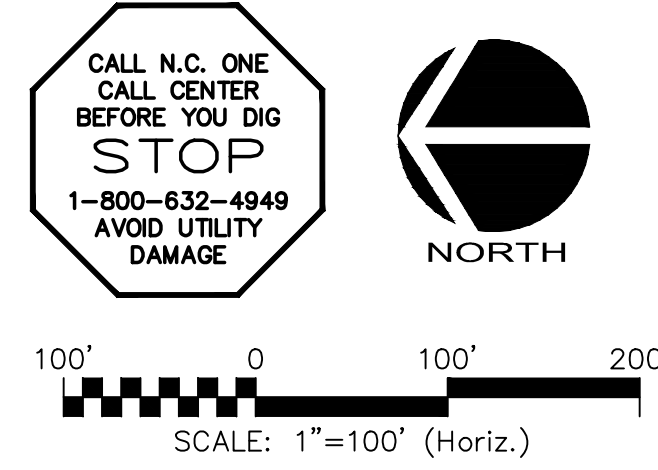
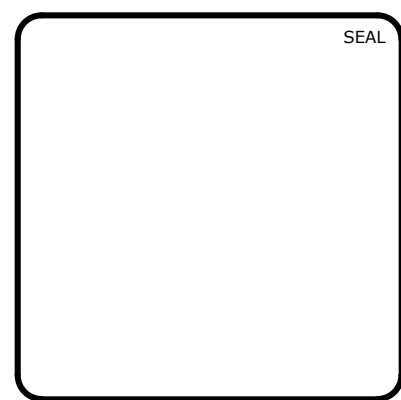


LEGEND:

- R/W LINE
- - - EXISTING R/W LINE
- - - HOA EASEMENT LINE
- - - PUBLIC UTILITY EASEMENT LINE
- - - PUBLIC DRAINAGE EASEMENT
- - - EX. POWER LINE EASEMENT
- - - OVERHEAD POWER LINE
- - - BMP MAINTENANCE & ACCESS EASEMENT
- - - 10' NO BUILD BUFFER LINE
- - - RIPARIAN BUFFER LINE
- FM EX. SANITARY SEWER FORCE MAIN
- IRR EX. REUSE IRRIGATION MAIN
- W EX. WATER MAIN
- - - NEW STORM DRAINAGE PIPE
- SS EX. SANITARY SEWER



REV. NO.	DESCRIPTIONS	DATE
3	REVISIONS PER COMMENTS RECEIVED FROM COUNTY EROSION CONTROL	2017.10.09
2	REVISIONS PER COMMENTS RECEIVED FROM NCDOT	2017.09.21
1	REVISIONS PER COMMENTS RECEIVED FROM COUNTY EROSION CONTROL	2017.09.13
0	SUBMITTAL TO AGENCIES	2017.07.26
	REVISIONS	



MCKIM & CREED
 1730 Varsity Drive, Suite 500
 Raleigh, North Carolina 27606
 Phone: (919)233-8091, Fax: (919)233-8031
 F-1222
www.mckimcreed.com

BRIAR CHAPEL™
 by
Newland COMMUNITIES

**BRIAR CHAPEL
 PHASE 13 - SECTION 1 & 2
 CHATHAM COUNTY, NORTH CAROLINA**

UTILITY PLAN

DATE: JULY 26, 2017	SCALE: C2.X	MSC FILE NUMBER: C2.0
MCE PROJ. # 02735-0198	HORIZONTAL: AS NOTED	DRAWING NUMBER: C2.0
DRAWN: BSS	VERTICAL: N/A	
DESIGNED: BSS		
CHECKED: GCA		
PROJ. MGR.: CHS		
STATUS: FOR REVIEW PURPOSES ONLY	REVISION: 3	

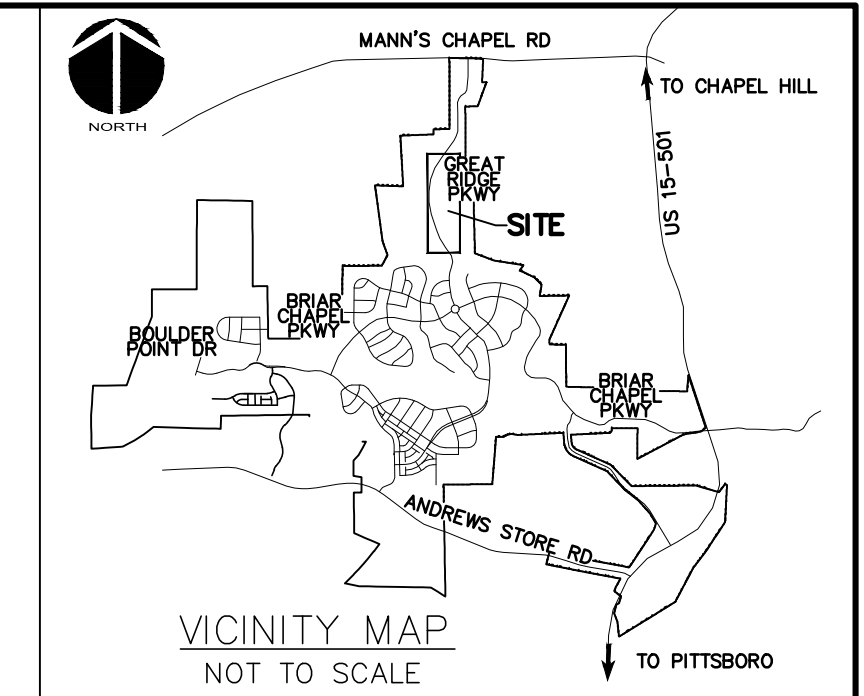
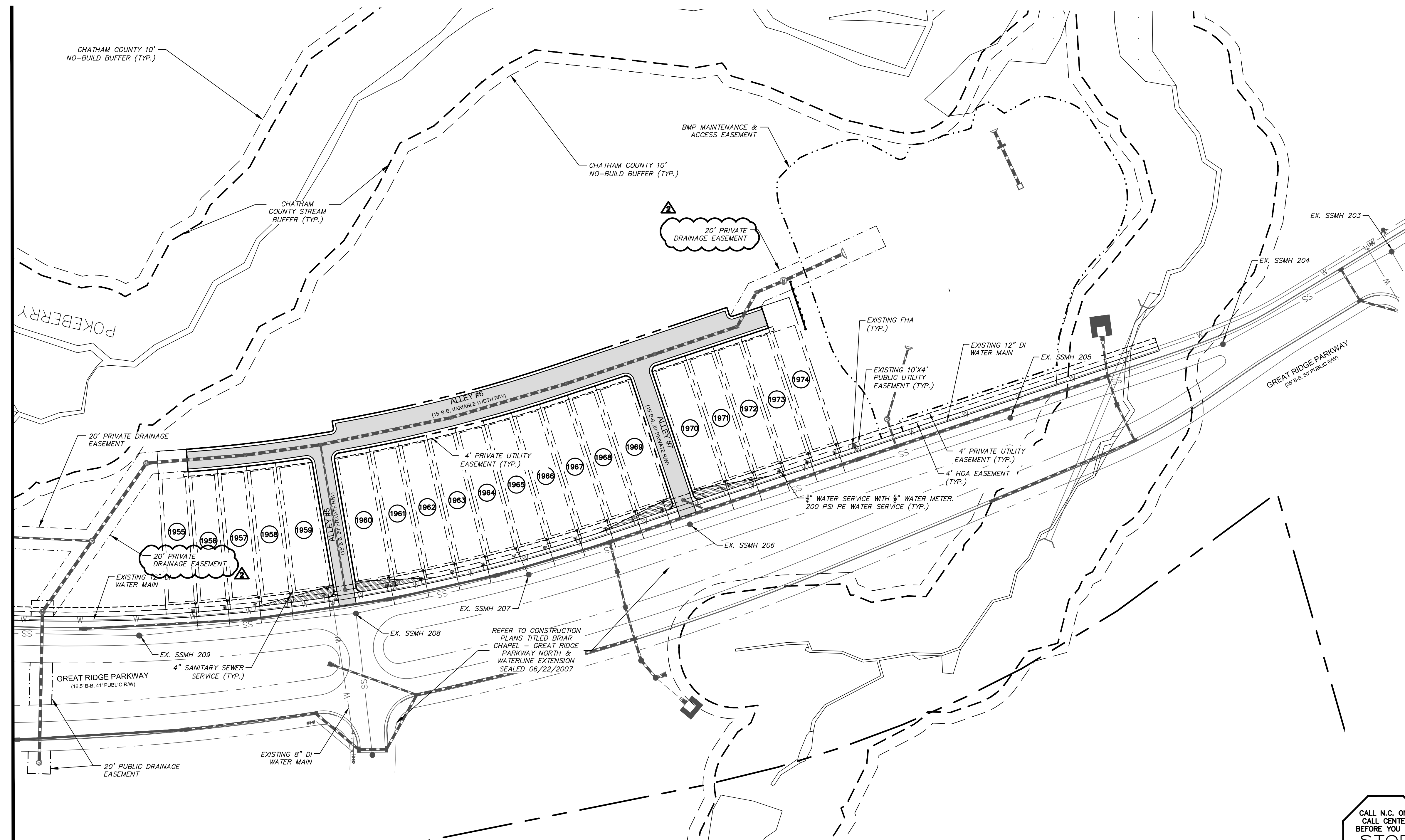
LEGEND:

---	R/W LINE	
---	EXISTING R/W LINE	
---	HOA EASEMENT LINE	
---	PUBLIC UTILITY EASEMENT LINE	
---	PUBLIC DRAINAGE EASEMENT	
---	EX. POWER LINE EASEMENT	
---	OVERHEAD POWER LINE	
---	BMP MAINTENANCE & ACCESS EASEMENT	
---	10' NO BUILD BUFFER LINE	
---	RIPARIAN BUFFER LINE	
---	FM	EX. SANITARY SEWER FORCE MAIN
---	IRR	EX. REUSE IRRIGATION MAIN
---	W	EX. WATER MAIN
---	---	NEW STORM DRAINAGE PIPE

UTILITY NOTES:

- ALL SANITARY SEWER CONSTRUCTION IS TO BE PERFORMED IN ACCORDANCE WITH CURRENT NCDENR & CHATHAM COUNTY STANDARDS, SPECIFICATIONS & DETAILS.
- ALL WATER MAIN CONSTRUCTION IS TO BE PERFORMED IN ACCORDANCE WITH CURRENT CHATHAM COUNTY STANDARDS, SPECIFICATIONS & DETAILS.
- ALL PERMITS RELATING TO THIS PROJECT MUST BE OBTAINED PRIOR TO CONSTRUCTION.
- ALL WATER MAINS SHALL HAVE A MIN. OF 3'-6" OF COVER AS MEASURED FROM FINISHED GRADE TO TOP OF PIPE AT THE LOCATION WHERE INSTALLED.
- WATER MAINS SHALL BE LAID AT LEAST 10 FEET LATERALLY FROM EXISTING OR PROPOSED SEWERS, UNLESS LOCAL CONDITIONS OR BARRIERS PREVENT A 10-FOOT LATERAL SEPARATION, IN WHICH CASE:
 - THE WATER MAIN IS LAID IN A SEPARATE TRENCH, WITH THE ELEVATION OF THE BOTTOM OF THE WATER MAIN AT LEAST 18 INCHES ABOVE THE TOP OF THE SEWER; OR
 - THE WATER MAIN IS LAID IN THE SAME TRENCH AS THE SEWER WITH THE WATER MAIN LOCATED AT ONE SIDE ON A BENCH OF UNDISTURBED EARTH, AND WITH THE ELEVATION OF THE BOTTOM OF THE WATER MAIN AT LEAST 18 INCHES ABOVE THE TOP OF THE SEWER.
- WHERE A WATER MAIN CROSSES OVER A SANITARY SEWER, THE WATER MAIN SHALL BE LAID AT SUCH AN ELEVATION THAT THE BOTTOM OF THE WATER MAIN IS AT LEAST 18 INCHES ABOVE THE TOP OF THE SEWER, UNLESS LOCAL CONDITIONS OR BARRIERS PREVENT AN 18-INCH VERTICAL SEPARATION - IN WHICH CASE BOTH THE WATER MAIN AND SEWER SHALL BE CONSTRUCTED OF DUCTILE IRON AND WITH JOINTS THAT ARE EQUIVALENT TO WATER MAIN STANDARDS FOR A DISTANCE OF 10 FEET ON EACH SIDE OF THE POINT OF CROSSING. A SECTION OF WATER MAIN PIPE SHALL BE CENTERED AT THE POINT OF CROSSING. SEE NCAC 15A, 18c, SECTION .0906.
- CONTRACTOR SHALL USE A MIN. 20' SECTION DIP CLASS 350 CENTERED UNDER STORMWATER PIPE WHERE 18" MIN. VERTICAL CLEARANCE CANNOT BE MET BETWEEN STORMWATER AND WATER.
- TRACER WIRE AND TRACER WIRE TEST STATIONS ARE TO BE INSTALLED ON ALL WATER MAINS. TRACER WIRE TEST STATIONS ARE TO BE LOCATED AT ALL FIRE HYDRANTS WITHIN A 3 FOOT RADIUS OF THE HYDRANT AND PREFERABLY TO THE REAR OF THE HYDRANT.
- WATER SERVICES SHALL BE EXTENDED FROM THE MAIN TO A METER BOX LOCATED WITHIN THE RIGHT OF WAY. THE METER SHALL BE PLACED AT THE EDGE OF THE SERVICED LOT'S RIGHT OF WAY LINE OR EASEMENT. SERVICE LINE SHALL BE RUN ON A TRUE LINE FROM THE WATER MAIN TO THE METER BOX, AND WHERE POSSIBLE, SERVICE LINE SHALL BE PERPENDICULAR TO THE MAIN LINE. NO WATER BOXES OR VAULTS SHALL BE PLACED IN STREETS, SIDEWALKS, PARKING AREAS, OR DRIVEWAYS.
- MANHOLES SHALL BE SPACED A MAXIMUM DISTANCE OF 400 FEET APART.
- MANHOLES SHALL BE INSTALLED AT EACH DEFLECTION OF LINE AND/OR GRADE WITH A MINIMUM DROP OF 0.2 FEET. MANHOLES FOR SEWERS GREATER THAN 21 INCHES IN DIAMETER SHALL BE 5 FOOT MANHOLES. MANHOLES FOR SEWERS 12 FEET OR DEEPER SHALL BE MINIMUM 5 FOOT DIAMETER. MANHOLE TOPS SHALL BE SET FLUSH WITH PAVEMENT WHERE INSTALLED IN A STREET.
- SERVICE CONNECTIONS FOR THE SANITARY SEWER LINES SHOULD BE PERPENDICULAR FROM THE MAIN LINE TO THE EDGE OF THE SERVICED LOT'S RIGHT OF WAY LINE OR EASEMENT WITH A MINIMUM GRADE OF 1/4 INCH/FOOT FOR 4 INCH AND .6 FOOT/100 FOOT FOR 6 INCH. ALL CLEANOUTS SHALL EXTEND A MINIMUM OF 6 INCHES ABOVE THE FINISHED GRADE. WHERE A SERVICE LINE IS CONNECTED TO A MANHOLE, THE LINE SHALL TERMINATE AT THE EDGE OF THE INVERT IN THE MANHOLE. NO CLEANOUTS SHALL BE PLACED IN STREETS, SIDEWALKS, PARKING AREAS, OR DRIVEWAYS.
- ALL SANITARY SEWER LINES ARE 8" PVC SDR 35 UNLESS OTHERWISE NOTED AND ALL WATER MAIN LINES ARE 8" DI CLASS 350 UNLESS OTHERWISE NOTED. ALL SANITARY SEWER SERVICES ARE 4" SCHEDULE 40 PVC AND ALL WATER MAIN SERVICES ARE 3/4".
- MINIMUM COVER OF 5 FEET IN TRAFFIC AREAS TO BE PROVIDED FOR ALL COLLECTOR LINES 4 INCHES AND LARGER. IF LESS THAN 5 FEET, DUCTILE IRON PIPE SHALL BE REQUIRED.
- SANITARY SEWER WITHIN PRIVATE EASEMENTS TO BE OWNED, OPERATED AND MAINTAINED BY HOME OWNERS ASSOCIATION OR AGENT THEREOF.
- WATER MAINS WILL BE 3.5' OFF CURB AND GUTTER UNLESS SHOWN OTHERWISE.
- ALL WATER MAINS WITHIN PUBLIC EASEMENTS AND PUBLIC RIGHT-OF-WAY TO BE OWNED, OPERATED AND MAINTAINED BY CHATHAM COUNTY, AND WILL BE CONTAINED WITHIN 20' WIDE PUBLIC WATER LINE EASEMENT (MINIMUM) CENTERED ON THE PROPOSED WATER MAIN.
- CONTRACTOR TO COORDINATE WITH CHATHAM COUNTY PUBLIC WORKS FOR ALL IRRIGATION SLEEVE SIZING.

MATCHLINE - SEE SHEET C2.2

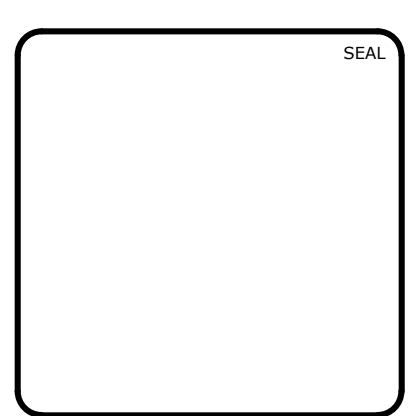


CALL N.C. ONE CALL CENTER BEFORE YOU DIG STOP 1-800-632-4849 AVOID UTILITY DAMAGE

NORTH



REV. NO.	DESCRIPTIONS	DATE
3	REVISIONS PER COMMENTS RECEIVED FROM COUNTY EROSION CONTROL	2017.10.09
2	REVISIONS PER COMMENTS RECEIVED FROM CDDOT	2017.09.21
1	REVISIONS PER COMMENTS RECEIVED FROM COUNTY EROSION CONTROL	2017.09.13
0	SUBMITTAL TO AGENCIES	2017.07.26



MCKIM & CREED

1730 Varsity Drive, Suite 500
Raleigh, North Carolina 27606
Phone: (919)233-8091, Fax: (919)233-8031
F-1222
www.mckimcreed.com

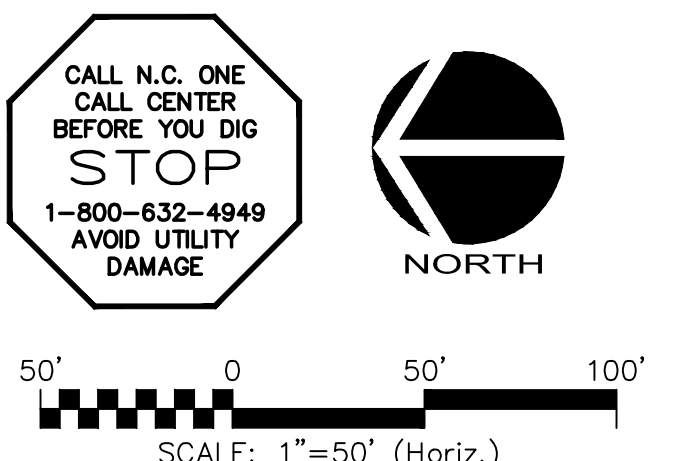
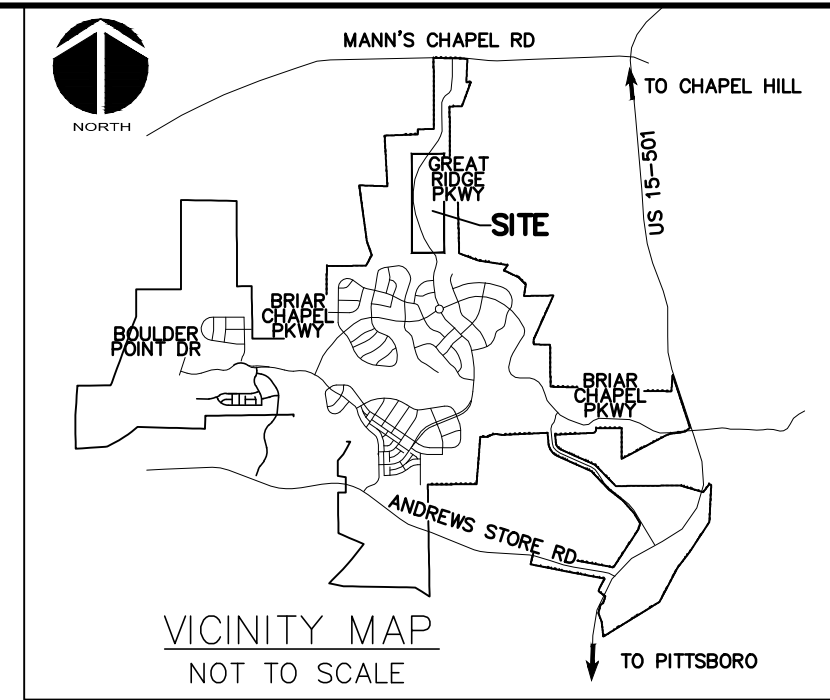
BRIAR CHAPEL™

by **Newland COMMUNITIES**

**BRIAR CHAPEL
PHASE 13 - SECTION 1 & 2
CHATHAM COUNTY, NORTH CAROLINA**

UTILITY PLAN

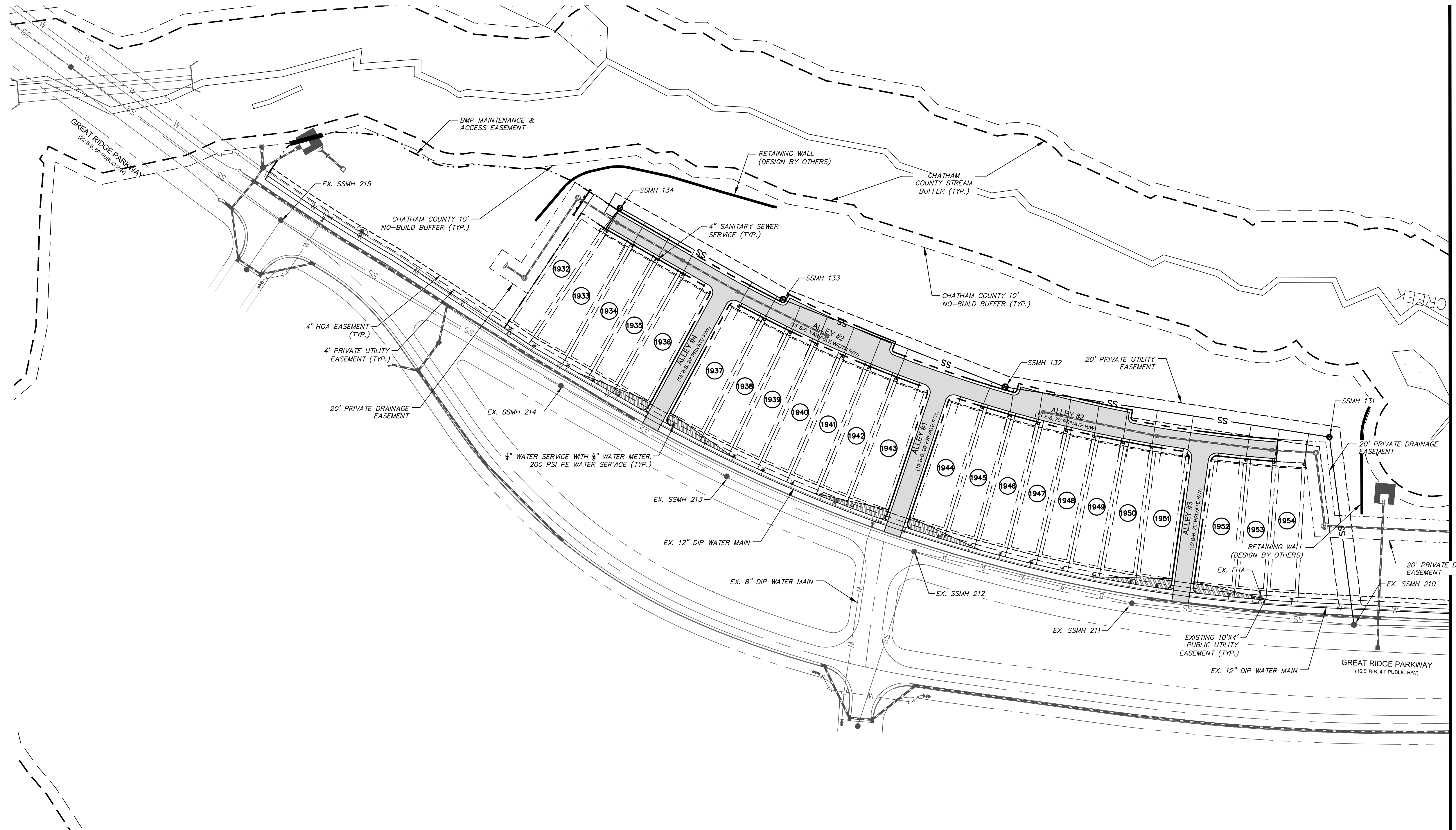
DATE: JULY 26, 2017	SCALE: 1" = 50'	MISC FILE NUMBER: C2.X
MCE PROJ. # 02735-0198	HORIZONTAL: 1" = 50'	DRAWING NUMBER: C2.1
DRAWN: BSS	VERTICAL: N/A	
DESIGNED: BSS		
CHECKED: GCA		
PROJ. MGR.: CHS		
STATUS: FOR REVIEW PURPOSES ONLY		REVISION: 3



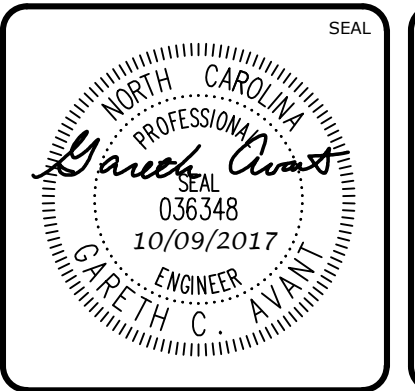
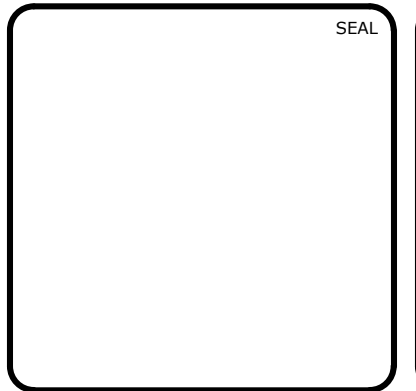
LEGEND:

	R/W LINE
	EXISTING R/W LINE
	HOA EASEMENT LINE
	PUBLIC UTILITY EASEMENT LINE
	PUBLIC DRAINAGE EASEMENT
	EX. POWER LINE EASEMENT
	OVERHEAD POWER LINE
	BMP MAINTENANCE & ACCESS EASEMENT
	10' NO BUILD BUFFER LINE
	RIPARIAN BUFFER LINE
	FM EX. SANITARY SEWER FORCE MAIN
	IRR EX. REUSE IRRIGATION MAIN
	W EX. WATER MAIN
	NEW STORM DRAINAGE PIPE

MATCHLINE - SEE SHEET C2.1



REV. NO.	DESCRIPTIONS	DATE
3	REVISIONS PER COMMENTS RECEIVED FROM COUNTY EROSION CONTROL	2017.10.09
2	REVISIONS PER COMMENTS RECEIVED FROM NCDOT	2017.09.21
1	REVISIONS PER COMMENTS RECEIVED FROM COUNTY EROSION CONTROL	2017.09.13
0	SUBMITTAL TO AGENCIES	2017.07.26



MCKIM & CREED
 1730 Varsity Drive, Suite 500
 Raleigh, North Carolina 27606
 Phone: (919)233-8091, Fax: (919)233-8031
 F-1222
www.mckimcreed.com

BRIAR CHAPEL™
 by **Newland COMMUNITIES**

**BRIAR CHAPEL
 PHASE 13 - SECTION 1 & 2
 CHATHAM COUNTY, NORTH CAROLINA**

UTILITY PLAN

DATE:	JULY 26, 2017	SCALE:	1" = 50'	M&C FILE NUMBER:	C2.X
M&C PROJ. #:	02735-0198	HORIZONTAL:	1" = 50'	DRAWING NUMBER:	C2.2
DRAWN:	BSS	VERTICAL:	N/A		
DESIGNED:	BSS				
CHECKED:	GCA				
PROJ. MGR.:	CHS				
STATUS:			FOR REVIEW PURPOSES ONLY		
			REVISION 3		

STAGE 1 CONSTRUCTION SEQUENCE:

1. THE INTENT OF THE CONSTRUCTION SEQUENCE IS TO PROVIDE THE CONTRACTOR WITH A GENERAL GUIDE FOR CONSTRUCTION PURPOSES. THIS SEQUENCE IS NOT INTENDED TO OUTLINE ALL CONSTRUCTION ACTIVITIES ON THIS PROJECT.
2. ALL EROSION CONTROL MEASURES SHALL BE CONSTRUCTED IN ACCORDANCE WITH THE CHATHAM COUNTY SOIL EROSION AND SEDIMENTATION CONTROL ORDINANCE.
3. ALL EROSION CONTROL MEASURES SHALL BE INSPECTED WEEKLY AND WITHIN 24 HOURS OF EVERY 0.5" OR MORE RAINFALL EVENT. NEEDED REPAIRS SHALL BE MADE IMMEDIATELY.
4. IF IT IS DETERMINED DURING CONSTRUCTION THAT SIGNIFICANT SEDIMENT IS LEAVING THE SITE, DESPITE PROPER IMPLEMENTATION AND MAINTENANCE, THE CONTRACTOR IS OBLIGATED TO TAKE ADDITIONAL CORRECTIVE ACTION. CONTACT CHATHAM COUNTY ENVIRONMENTAL QUALITY DEPARTMENT, OWNER'S REPRESENTATIVE AND ENGINEER WITH ANY ADDITIONAL MEASURES NEEDED.
5. CONTRACTOR SHALL ESTABLISH GROUND COVER ON DISTURBED AREAS WITHIN THE NUMBER OF CALENDAR DAYS AFTER COMPLETION OF GRADING PER THE SCHEDULE BELOW:

GRADUAL SLOPES:	(14) CALENDAR DAYS
MODERATE SLOPES:	(10) CALENDAR DAYS
STEEP SLOPES:	(7) CALENDAR DAYS

 SLOPES ARE AS DEFINED IN THE CHATHAM COUNTY SOIL EROSION AND SEDIMENTATION CONTROL ORDINANCE.
6. CONTRACTOR SHALL ARRANGE PRE-CONSTRUCTION MEETING WITH THE OWNER'S REPRESENTATIVE, ENGINEER AND CHATHAM COUNTY.
7. OBTAIN LETTER OF PLAN APPROVAL FOR SEDIMENTATION AND EROSION CONTROL FROM CHATHAM COUNTY SOIL EROSION & SEDIMENTATION CONTROL.
8. CONTRACTOR TO POST EROSION CONTROL PERMIT PROMINENTLY ON SITE AT ALL TIMES.
9. CONTRACTOR TO VERIFY LOCATION AND DEPTH OF EXISTING UTILITIES TO AVOID CONFLICT DURING INSTALLATION OF EROSION CONTROL MEASURES AND STORM DRAINAGE. CONTRACTOR IS TO CALL 1-800-632-4949 FOR "NO ONE CALL" TO HAVE UTILITIES LOCATED.

STAGE 1 CONSTRUCTION SEQUENCE (CONT.):

10. CONTRACTOR TO HAVE A PROFESSIONAL LAND SURVEYOR FLAG PROPERTY LINES, EASEMENTS, LANDSCAPE BUFFERS, STREAM BUFFERS, TREE PROTECTION AREAS AND LIMITS OF DISTURBANCE.
11. CONTRACTOR TO ENSURE THAT EXISTING EROSION CONTROL DEVICES ARE IN WORKING ORDER AND FUNCTIONING AS INTENDED IN PARTICULAR EXISTING INLET PROTECTION DEVICES ALONG GREAT RIDGE PARKWAY. IF NOT, CONTRACTOR IS TO TAKE MEASURES TO RESTORE EXISTING NON-FUNCTIONING EROSION CONTROL DEVICES.
12. INSTALL TREE PROTECTION FENCING AND SILT FENCING AS SHOWN AND DETAILED ON PLAN. TIMBER ONLY AS NECESSARY TO INSTALL THESE DEVICES.
13. CONSTRUCT TEMPORARY SKIMMER SEDIMENT BASINS & TEMPORARY SEDIMENT TRAP TO THE REQUIRED DIMENSIONS AND ELEVATIONS AS DETAILED IN THESE PLANS. PERMANENT RISER STRUCTURES SHALL BE INSTALLED IN SKIMMER BASINS #2 (BMP #33) & #4 (BMP #34) PER THE DETAILS AS SHOWN IN SHEETS D4.1-D4.4 AND SKIMMERS SHALL BE ATTACHED ACCORDINGLY. GRUB ONLY AS NECESSARY TO INSTALL THE BASINS. MATERIAL EXCAVATED DURING THE CONSTRUCTION OF SKIMMER BASINS SHALL BE TEMPORARILY STOCKPILED ADJACENT TO BASINS. ONCE ROUGH GRADING OPERATIONS BEGIN, THESE MATERIALS SHALL BE PLACED AS NEEDED IN AREAS OF FILL OR MOVED TO LARGER STOCKPILE AREAS.
14. INSTALL BAFFLES PER PLAN. SEED AND MULCH SIDE SLOPES OF SKIMMER BASINS UPON COMPLETION. INSTALL BIODEGRADABLE MATTING ON SIDE SLOPES OF BASINS IF NECESSARY TO ESTABLISH COVER.
15. CONSTRUCT TEMPORARY DIVERSION DITCHES AS SHOWN AND DETAILED IN THESE PLANS. SEED, MULCH AND INSTALL REQUIRED LINERS IN THESE DITCHES. INSTALL CHECK DAMS IN DITCHES AS SHOWN AND DETAILED ON PLANS. CLEAR ONLY AS NECESSARY TO INSTALL THESE EROSION CONTROL MEASURES.
15. CONTACT CHATHAM COUNTY SOIL EROSION & SEDIMENTATION AT 919-548-6643 AND ENGINEER UPON COMPLETION OF INITIAL EROSION CONTROL MEASURES.
16. ONCE TEMPORARY SKIMMER SEDIMENT BASINS AND DIVERSION DITCHES HAVE BEEN INSTALLED, GRUB WITHIN DELINEATED DRAINAGE AREAS ASSOCIATED WITH THE INSTALLED TEMPORARY SKIMMER SEDIMENT BASINS.

STAGE 1 CONSTRUCTION SEQUENCE (CONT.):

17. CONTRACTOR SHALL STRIP TOPSOIL AND STORE AT DESIGNATED LOCATION. PROVIDE SILT FENCE AROUND PERIMETER OF SLOPE OF ANY STOCKPILE AREAS. CONTRACTOR SHALL REMOVE ALL ROOT MATTER AND ORGANICS FROM WITHIN THE CLEARING LIMITS.
18. AFTER COMPLETION OF CLEARING AND GRUBBING, THE SITE SHALL BE TEMPORARILY STABILIZED EXCEPT IN AREAS OF ACTIVE CUT/FILL. ACTIVE AREAS SHOULD NOT EXCEED 25 ACRES AT ONE TIME.
19. BEGIN ROUGH GRADING WITHIN CLEARING LIMITS. MATERIAL EXCAVATED DURING THE CONSTRUCTION OF SKIMMER BASINS SHALL BE TEMPORARILY STOCKPILED ADJACENT TO BASINS. ONCE ROUGH GRADING OPERATIONS BEGIN, THESE MATERIALS SHALL BE PLACED AS NEEDED IN AREAS OF FILL OR MOVED TO LARGER STOCKPILE AREAS.
20. MAINTAIN AND PROTECT EXISTING UTILITIES AT ALL TIMES. MAINTAIN DIVERSION DITCHES, BASINS, SILT FENCE AND OTHER EROSION CONTROL MEASURES UNTIL THEY ARE APPROVED TO BE REMOVED.
21. PERFORM SEEDING AND MULCHING AS REQUIRED IN ACCORDANCE WITH THE PLANS.
22. ONCE GROUND COVER HAS BEEN ESTABLISHED AND OTHER CONSTRUCTION IS COMPLETE, CONTACT CHATHAM COUNTY SOIL EROSION AND SEDIMENTATION AND ENGINEER FOR SITE INSPECTION BEFORE REMOVING ANY TEMPORARY EROSION CONTROL MEASURES.
23. USE OF A SEDIMENT BAG IS REQUIRED FOR ALL BASIN DEWATERING DURING CONSTRUCTION.

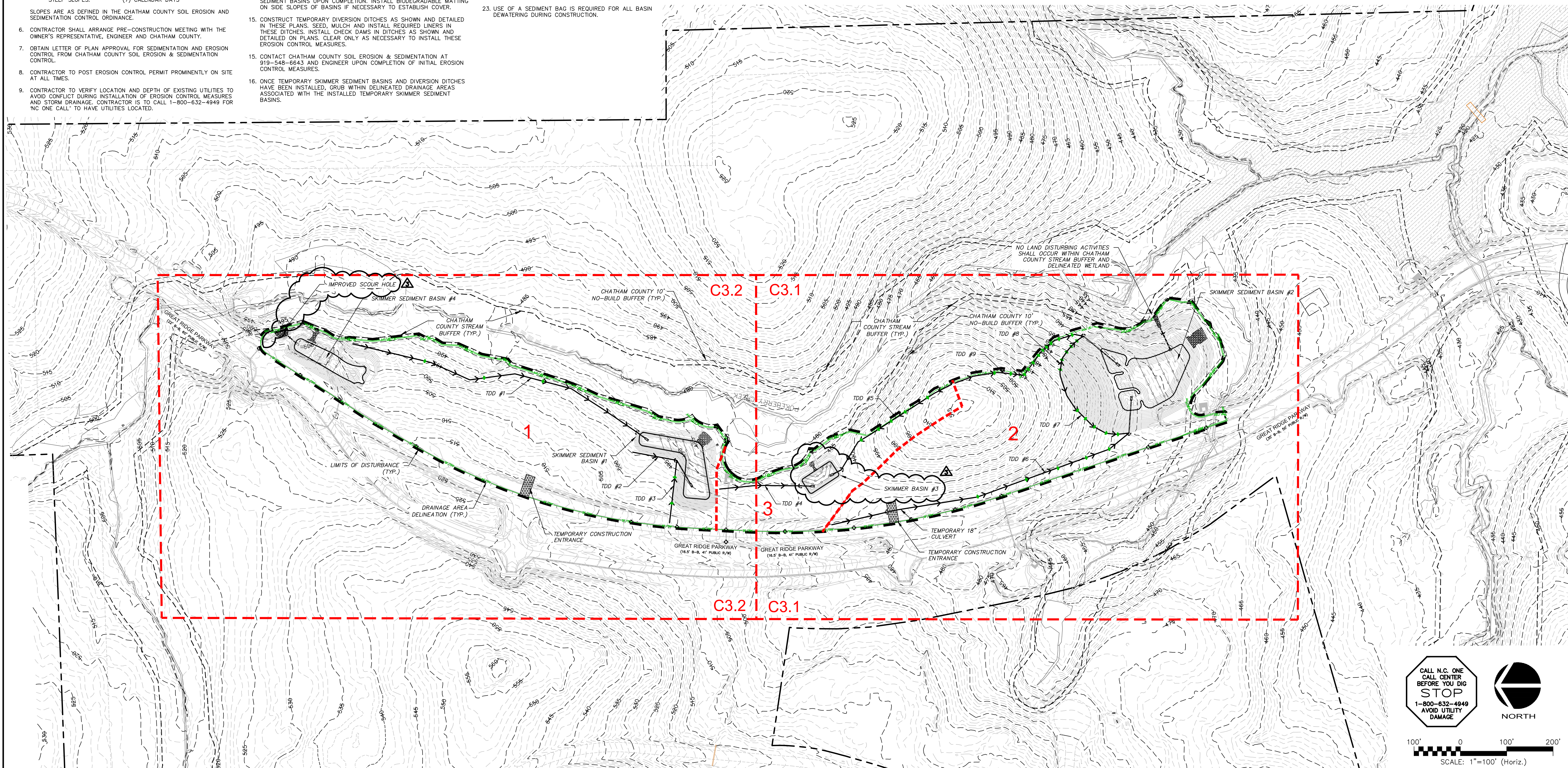
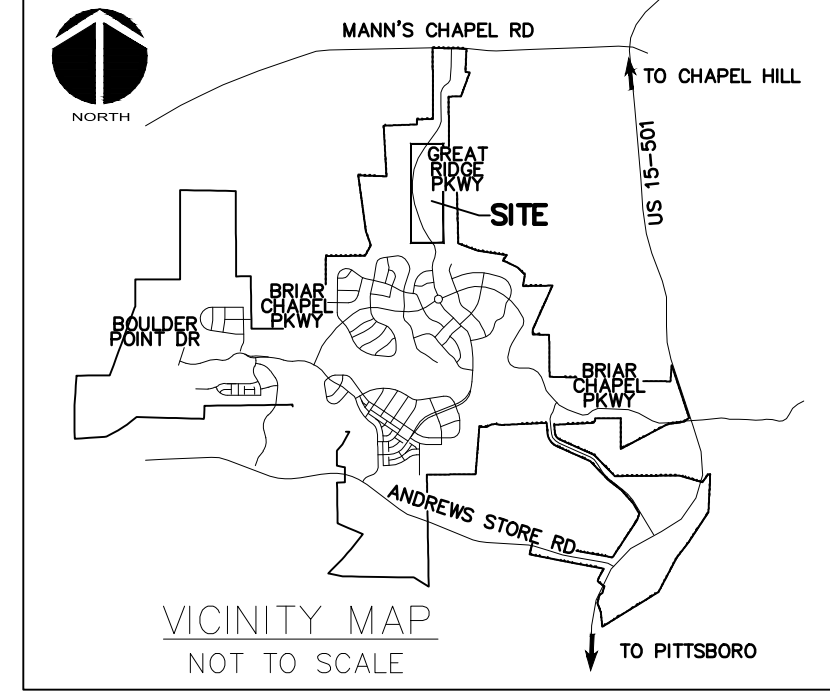
LIMITS OF DISTURBANCE NOTES:

1. LIMITS OF DISTURBANCE LINES ARE CLEARING LIMIT LINES WHICH WILL BE FLAGGED FOR A MINIMUM OF ONE PER 50-FT OR CLOSER DEPENDING ON VISIBILITY.
2. SILT FENCE AND TREE PROTECTION FENCE LINES ALSO DELINEATE THE LIMITS OF DISTURBANCE. ALL SILT FENCING OR TREE PROTECTION FENCING SHALL BE INSTALLED INSIDE LIMITS OF DISTURBANCE.
3. TOTAL DISTURBED AREA: 11.03 ACRES.

LEGEND:

	TEMPORARY CONSTRUCTION ENTRANCE
	RIPRAP OUTLET PROTECTION
	100-YEAR FLOODPLAIN
	EXISTING WETLANDS
	EX. COMBINATION SILT/TREE PROTECTION FENCE
	EX. TEMPORARY DIVERSION DITCH
	EXISTING CONTOUR
	EX. LIMITS OF DISTURBANCE
	COMBINATION SILT/TREE PROTECTION FENCE

	TEMPORARY DIVERSION DITCH
	LIMITS OF DISTURBANCE
	SEDIMENT BASIN BAFFLE
	ARC PIPE INLET PROTECTION
	DIVERSION CHECK DAM
	SLOPE DRAIN
	TEMPORARY DIVERSION DITCH
	CLEAN WATER DIVERSION DITCH
	SILT FENCE OUTLET
	DRAINAGE AREA
	DRAINAGE AREA DELINEATION



REV. NO.	DESCRIPTION	DATE
3	REVISIONS PER COMMENTS RECEIVED FROM COUNTY EROSION CONTROL	2017.10.09
2	REVISIONS PER COMMENTS RECEIVED FROM NCDOT	2017.09.21
1	REVISIONS PER COMMENTS RECEIVED FROM COUNTY EROSION CONTROL	2017.09.13
0	SUBMITTAL TO AGENCIES	2017.07.26

Professional Engineer Seal for David Reed, State of North Carolina, License No. 036348, dated 10/09/2017.

MCKIM & CREED
 1730 Varsity Drive, Suite 500
 Raleigh, North Carolina 27606
 Phone: (919)233-8091, Fax: (919)233-8031
 F-1222
 www.mckimcreed.com

BRIAR CHAPEL™
 by
Newland COMMUNITIES

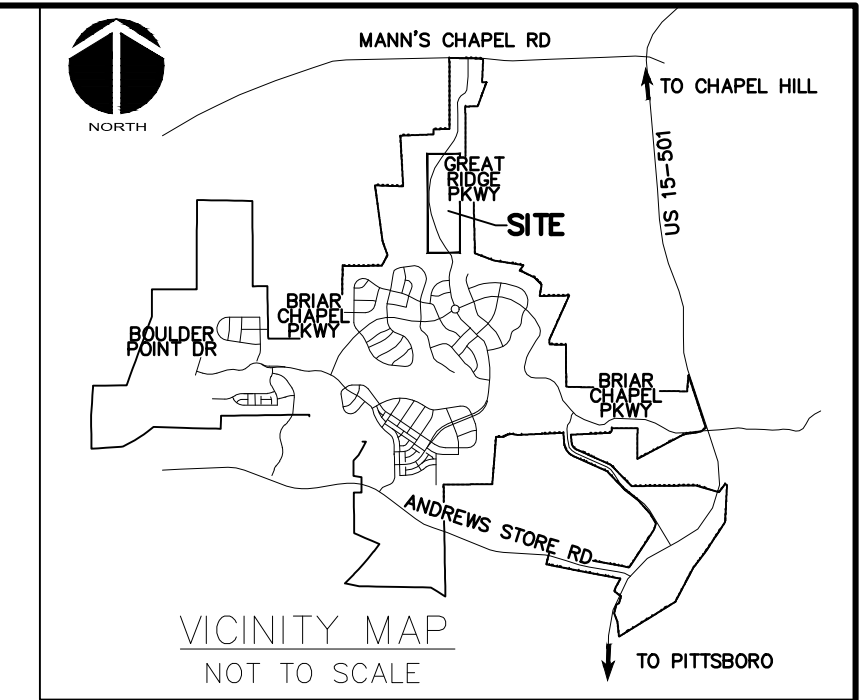
**BRIAR CHAPEL
 PHASE 13 - SECTION 1 & 2
 CHATHAM COUNTY, NORTH CAROLINA
 OVERALL STAGE 1
 GRADING, DRAINAGE & EROSION
 CONTROL PLAN**

DATE:	JULY 26, 2017	SCALE:	AS NOTED
MCE PROJ. #	02735-0198	HORIZONTAL:	AS NOTED
DRAWN:	BSS	VERTICAL:	N/A
DESIGNED:	BSS	REVISION:	3
CHECKED:	GCA	FOR REVIEW PURPOSES ONLY	
PROJ. MGR.	CHS		

NPDES GROUNDCOVER STABILIZATION TIMEFRAMES		
SITE AREA DESCRIPTION	STABILIZATION	TIMEFRAME EXCEPTIONS
PERIMETER DIKES, SWALES, DITCHES, SLOPES	7 DAYS	NONE
HIGH QUALITY WATER (HQW) ZONES	7 DAYS	NONE
SLOPES STEEPER THAN 3:1	7 DAYS	14 DAYS FOR SLOPES 10' OR LESS IN LENGTH AND NOT STEEPER THAN 2:1
SLOPES 3:1 OR FLATTER	14 DAYS	7 DAYS FOR SLOPES GREATER THAN 50' IN LENGTH
ALL OTHER AREAS WITH SLOPES FLATTER THAN 4:1	14 DAYS	NONE, EXCEPT FOR PERIMETERS AND HQW ZONES

EROSION CONTROL NOTES:

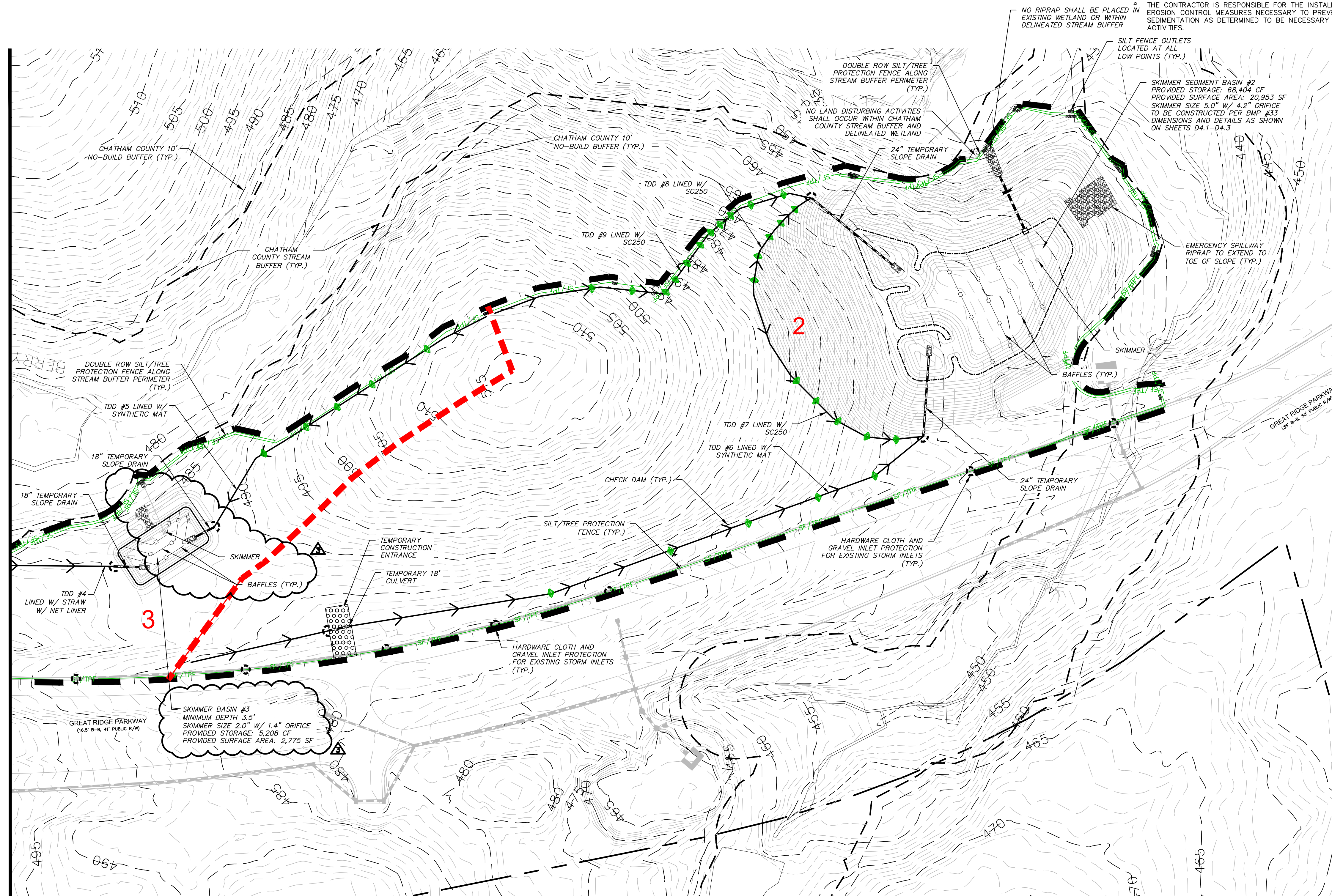
- PRIOR TO BEGINNING CONSTRUCTION, AN ON SITE PRE-CONSTRUCTION MEETING SHALL BE HELD. CHATHAM COUNTY OFFICIALS, THE ENGINEER, OWNER'S REPRESENTATIVE AND CONTRACTOR MUST ATTEND. NOTICE MUST BE GIVEN 48 HOURS NOTICE PRIOR TO SCHEDULING.
- ALL VEGETATIVE AND STRUCTURAL EROSION AND SEDIMENT CONTROL PRACTICES WILL BE CONSTRUCTED AND MAINTAINED ACCORDING TO MINIMUM STANDARDS AND SPECIFICATIONS OF THE NORTH CAROLINA EROSION AND SEDIMENT CONTROL MANUAL.
- ALL DISTURBED AREAS ARE TO DRAIN TO APPROVED SEDIMENT CONTROL MEASURES AT ALL TIMES DURING LAND DISTURBING ACTIVITIES AND DURING SITE DEVELOPMENT UNTIL FINAL STABILIZATION IS ACHIEVED.
- PERMANENT OR TEMPORARY SOIL STABILIZATION SHALL BE APPLIED TO DENUDED AREAS WITHIN SEVEN DAYS AFTER FINAL GRADE IS REACHED ON ANY PORTION OF THE SITE. TEMPORARY SOIL STABILIZATION SHALL BE APPLIED WITHIN SEVEN DAYS, UNLESS OTHERWISE NOTED IN STABILIZATION TIMEFRAME CHART, TO DENUDED AREAS THAT MAY NOT BE AT FINAL GRADE BUT WILL REMAIN DORMANT (UNDISTURBED) FOR LONGER THAN 14 DAYS. PERMANENT STABILIZATION SHALL BE APPLIED WITHIN 14 DAYS TO AREAS THAT ARE LEFT TO BE DORMANT FOR MORE THAN ONE YEAR.
- THE CONTRACTOR SHALL INSPECT ALL EROSION CONTROL MEASURES PERIODICALLY AND AFTER EACH RUNOFF PRODUCING RAINFALL EVENT EXCEEDING 1/8 INCH. ANY NECESSARY REPAIRS OR CLEANUP TO MAINTAIN THE EFFECTIVENESS OF THE EROSION CONTROL DEVICES SHALL BE MADE IMMEDIATELY. ANY MEASURE THAT FAILS TO FUNCTION AS INTENDED SHALL IMMEDIATELY BE BROUGHT TO THE ATTENTION OF THE ENGINEER OR OWNER'S REPRESENTATIVE.
- THE CONTRACTOR IS RESPONSIBLE FOR THE INSTALLATION OF ANY ADDITIONAL EROSION CONTROL MEASURES NECESSARY TO PREVENT EROSION AND SEDIMENTATION AS DETERMINED TO BE NECESSARY DURING CONSTRUCTION ACTIVITIES.



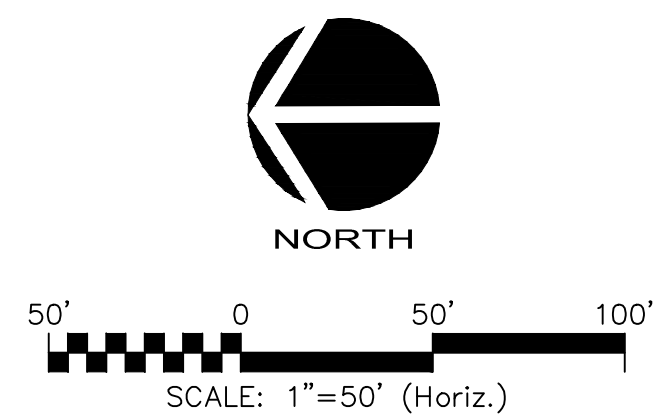
LEGEND:

	TEMPORARY CONSTRUCTION ENTRANCE
	RIPRAP OUTLET PROTECTION
	100-YEAR FLOODPLAIN
	EXISTING WETLANDS
	EX. COMBINATION SILT/TREE PROTECTION FENCE
	EX. TEMPORARY DIVERSION DITCH
	EXISTING CONTOUR
	EX. LIMITS OF DISTURBANCE
	COMBINATION SILT/TREE PROTECTION FENCE
	TEMPORARY DIVERSION DITCH
	LIMITS OF DISTURBANCE
	SEDIMENT BASIN BAFFLE
	ARC PIPE INLET PROTECTION
	DIVERSION CHECK DAM
	SLOPE DRAIN
	TEMPORARY DIVERSION DITCH
	CLEAN WATER DIVERSION DITCH
	SILT FENCE OUTLET
	DRAINAGE AREA
	DRAINAGE AREA DELINEATION
	HARDWARE CLOTH & GRAVEL INLET PROTECTION

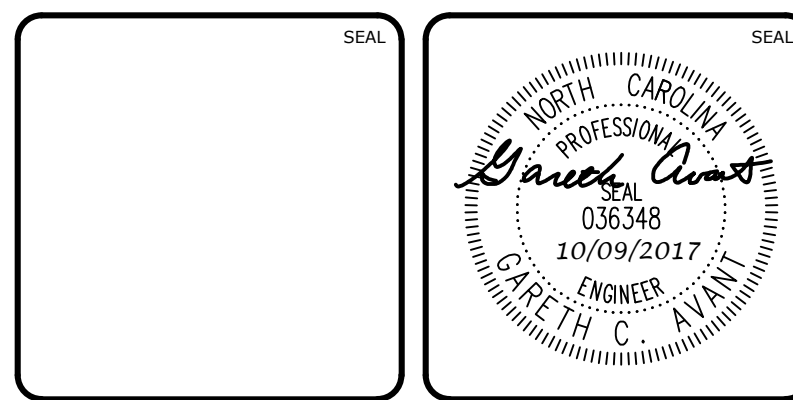
MATCHLINE - SEE SHEET C3.2



CALL N.C. ONE CALL CENTER BEFORE YOU DIG
STOP
1-800-632-4949
AVOID UTILITY DAMAGE



REV. NO.	DESCRIPTIONS	DATE
3	REVISIONS PER COMMENTS RECEIVED FROM COUNTY EROSION CONTROL	2017.10.09
2	REVISIONS PER COMMENTS RECEIVED FROM NCDOT	2017.09.21
1	REVISIONS PER COMMENTS RECEIVED FROM COUNTY EROSION CONTROL	2017.09.13
0	SUBMITTAL TO AGENCIES	2017.07.26



MCKIM & CREED
1730 Varsity Drive, Suite 500
Raleigh, North Carolina 27606
Phone: (919)233-8091, Fax: (919)233-8031
F-1222
www.mckimcreed.com

BRIAR CHAPEL™
by
Newland COMMUNITIES

**BRIAR CHAPEL
PHASE 13 - SECTION 1 & 2
CHATHAM COUNTY, NORTH CAROLINA
STAGE 1
GRADING, DRAINAGE & EROSION
CONTROL PLAN**

DATE: JULY 26, 2017	SCALE: 1" = 50'	MISC FILE NUMBER: C3.X
MCE PROJ. # 02735-0198	HORIZONTAL: 1" = 50'	DRAWING NUMBER: C3.1
DRAWN: BSS	VERTICAL: N/A	
DESIGNED: BSS		
CHECKED: GCA		
PROJ. MGR.: CHS		
STATUS: FOR REVIEW PURPOSES ONLY		REVISION: 3