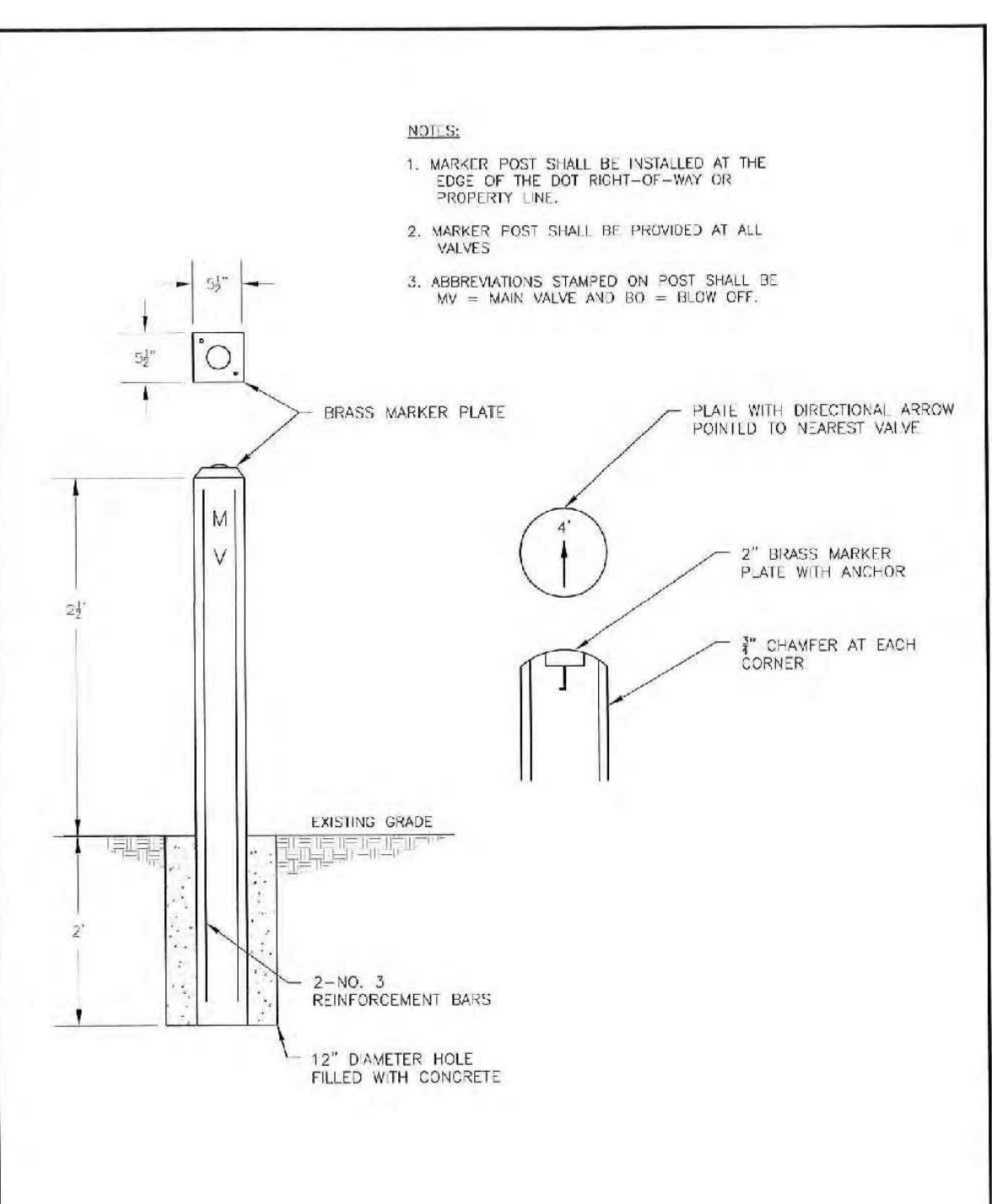


UNDERGROUND SERVICE ALERT  
CALL 811  
811

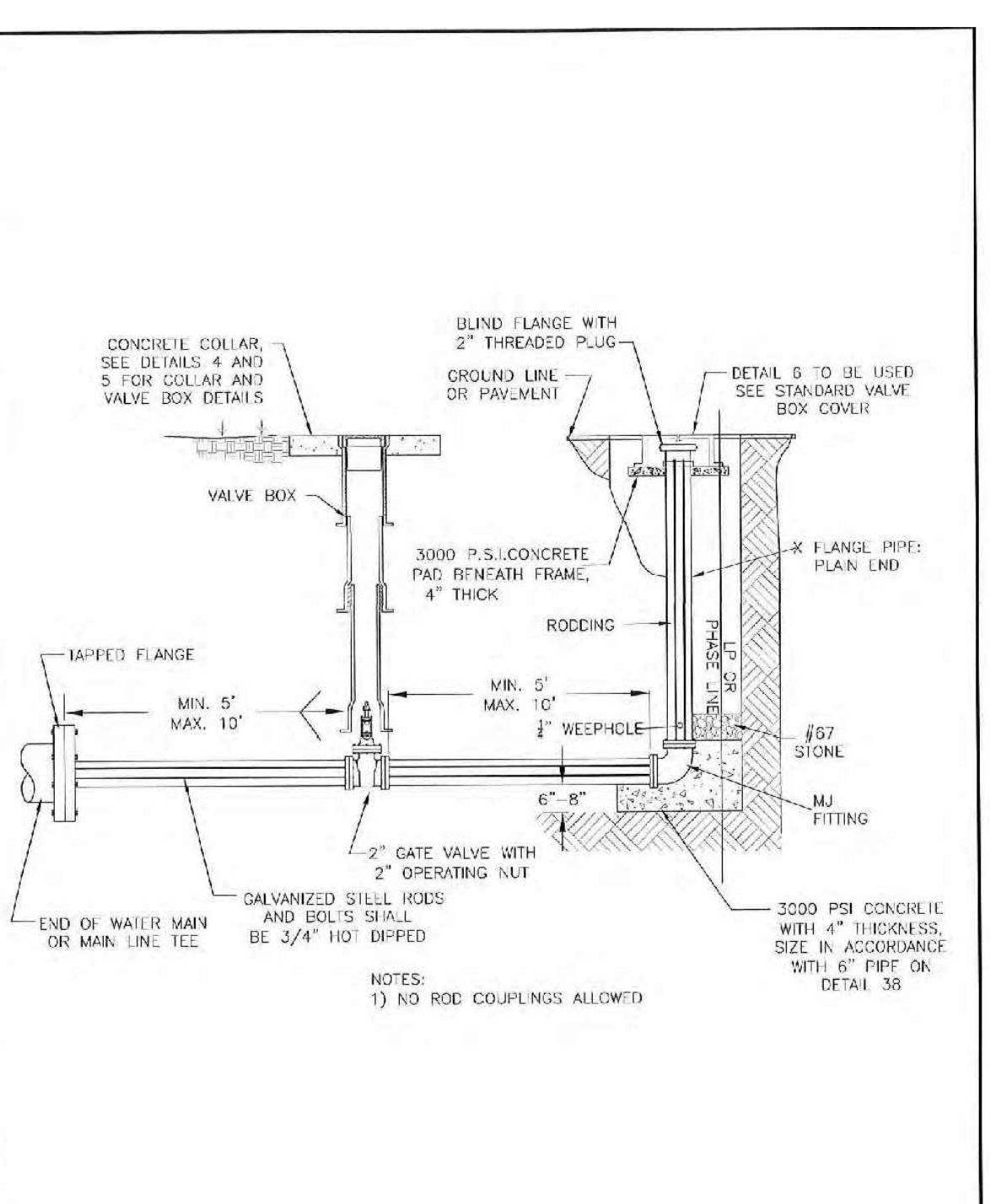
CHATHAM COUNTY  
PUBLIC UTILITIES & WATER DIVISION  
P.O. BOX 910  
PITTSBORO, NC 27312  
984 EAST STREET, SUITE 205  
PITTSBORO, NC 27312  
(919) 852-8270 (BUS)  
(919) 852-8282 (FAX)

FIRE HYDRANT  
OPERATING NUT AND  
2 1/2" OUTLET THREADS



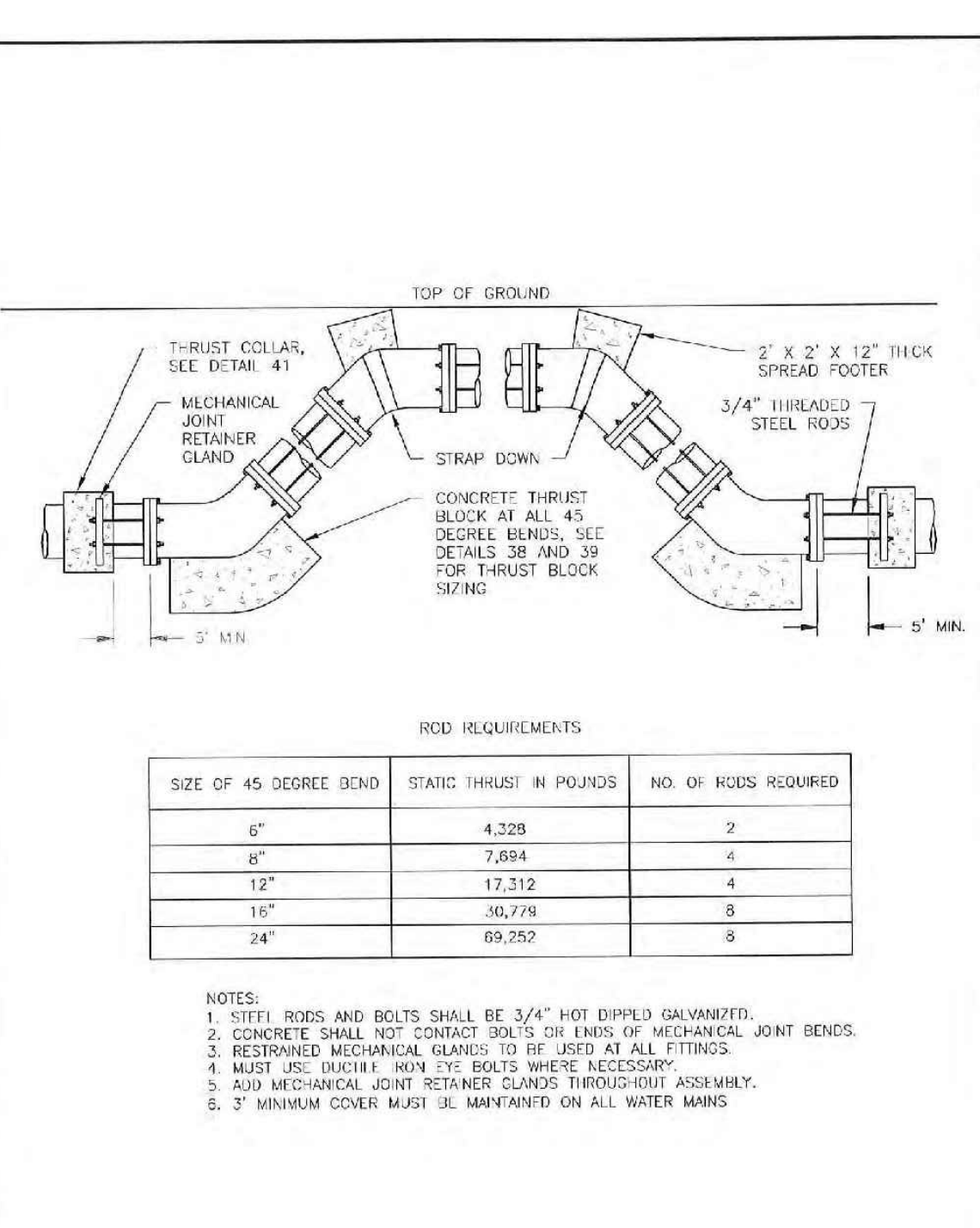
CHATHAM COUNTY  
PUBLIC UTILITIES & WATER DIVISION  
P.O. BOX 910  
PITTSBORO, NC 27312  
984 EAST STREET, SUITE 205  
PITTSBORO, NC 27312  
(919) 852-8270 (BUS)  
(919) 852-8282 (FAX)

DETAIL  
7  
REVISION  
DATE  
JULY 1, 2015



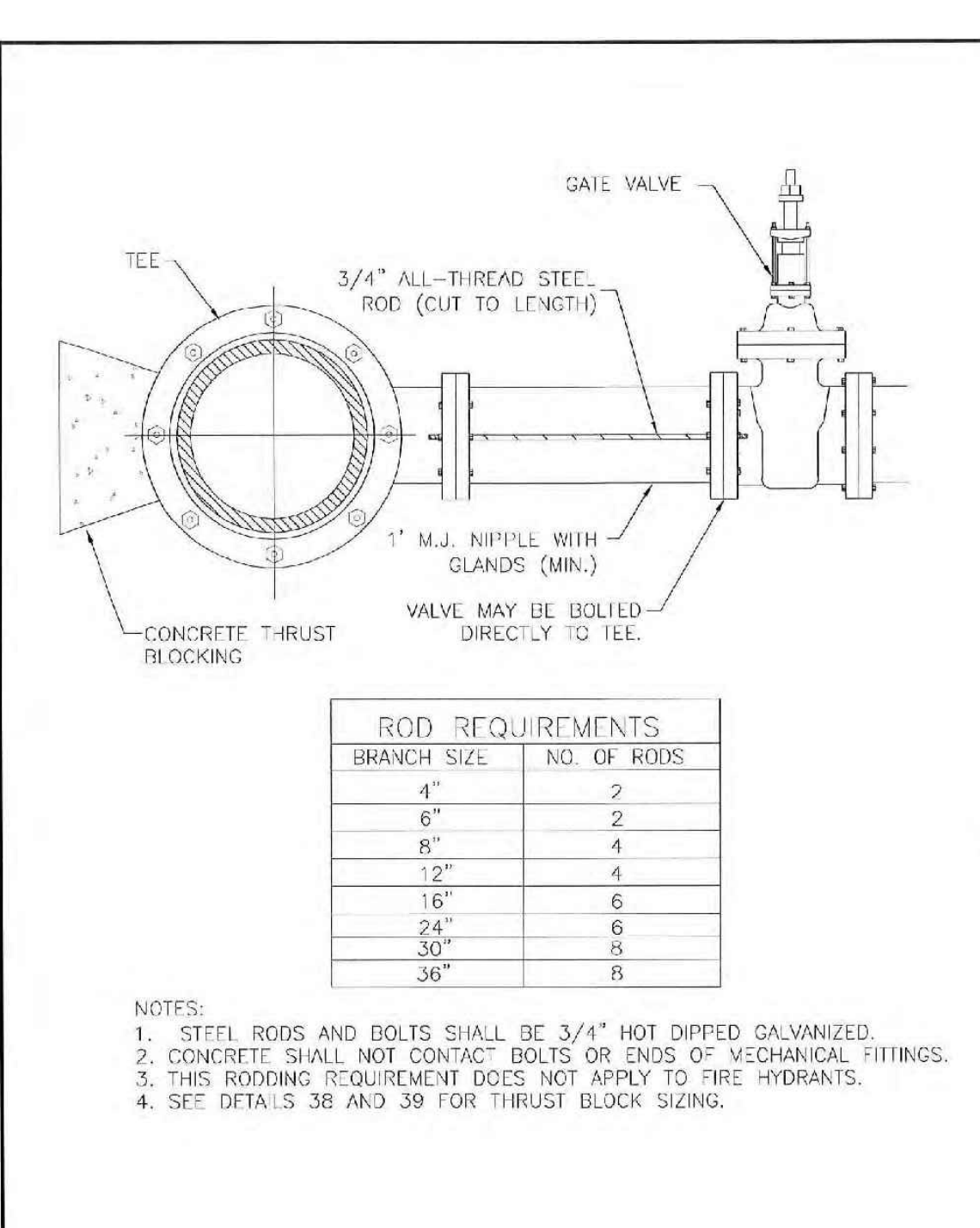
CHATHAM COUNTY  
PUBLIC UTILITIES & WATER DIVISION  
P.O. BOX 910  
PITTSBORO, NC 27312  
984 EAST STREET, SUITE 205  
PITTSBORO, NC 27312  
(919) 852-8270 (BUS)  
(919) 852-8282 (FAX)

DETAIL  
13  
REVISION  
DATE  
JULY 1, 2015



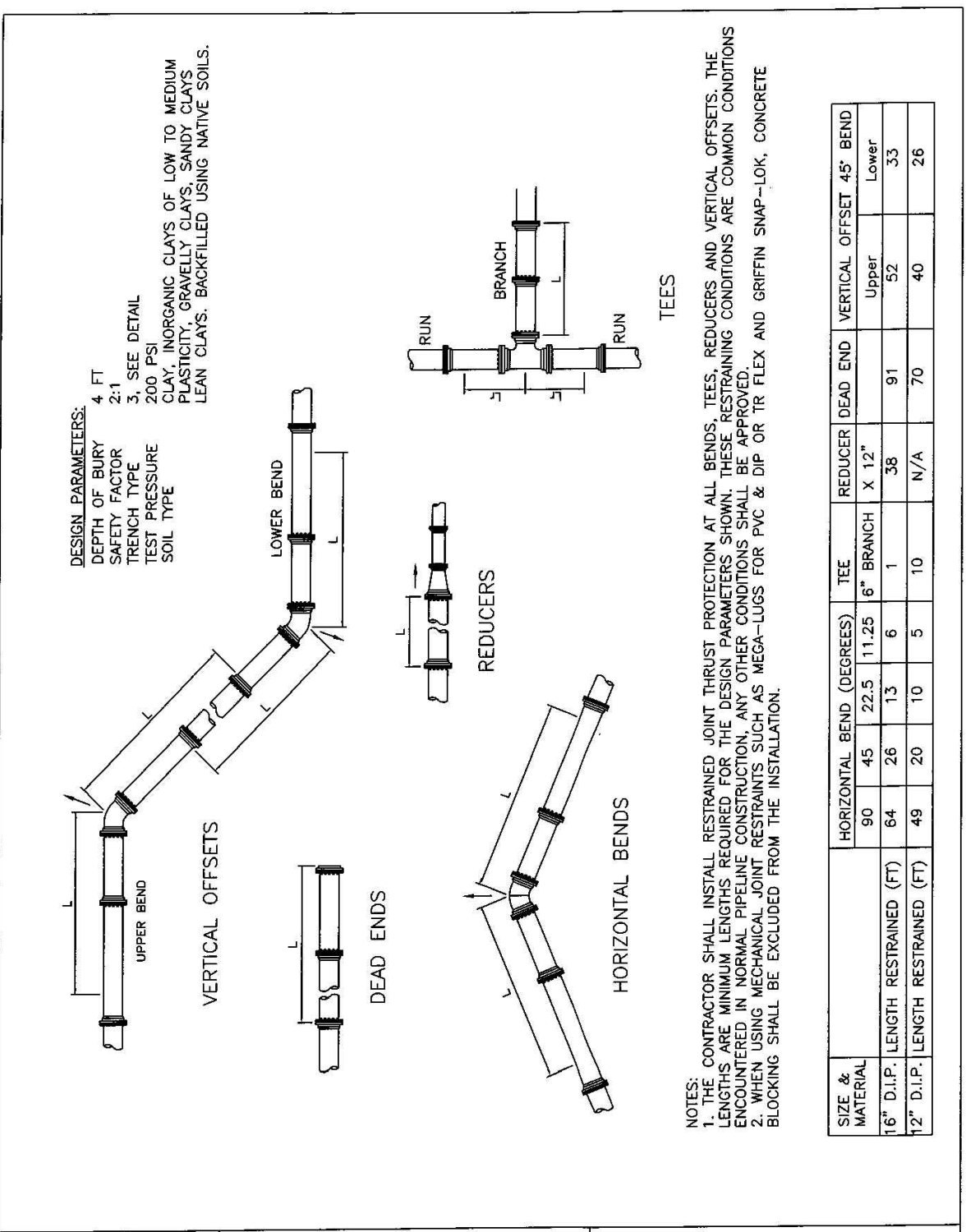
CHATHAM COUNTY  
PUBLIC UTILITIES & WATER DIVISION  
P.O. BOX 910  
PITTSBORO, NC 27312  
984 EAST STREET, SUITE 205  
PITTSBORO, NC 27312  
(919) 852-8270 (BUS)  
(919) 852-8282 (FAX)

DETAIL  
43  
REVISION  
DATE  
JULY 1, 2015



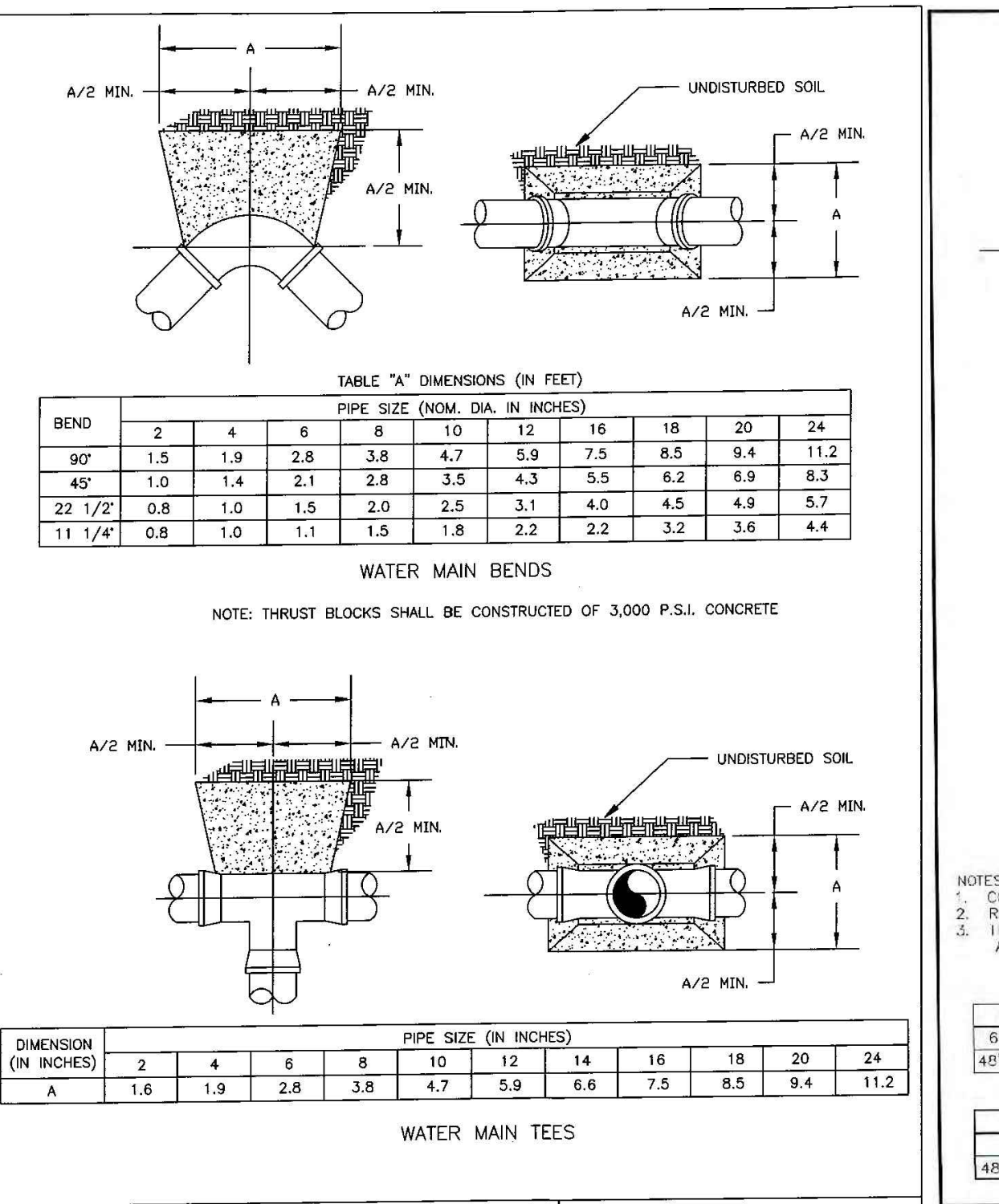
CHATHAM COUNTY  
PUBLIC UTILITIES & WATER DIVISION  
P.O. BOX 910  
PITTSBORO, NC 27312  
984 EAST STREET, SUITE 205  
PITTSBORO, NC 27312  
(919) 852-8270 (BUS)  
(919) 852-8282 (FAX)

DETAIL  
42  
REVISION  
DATE  
JULY 1, 2015



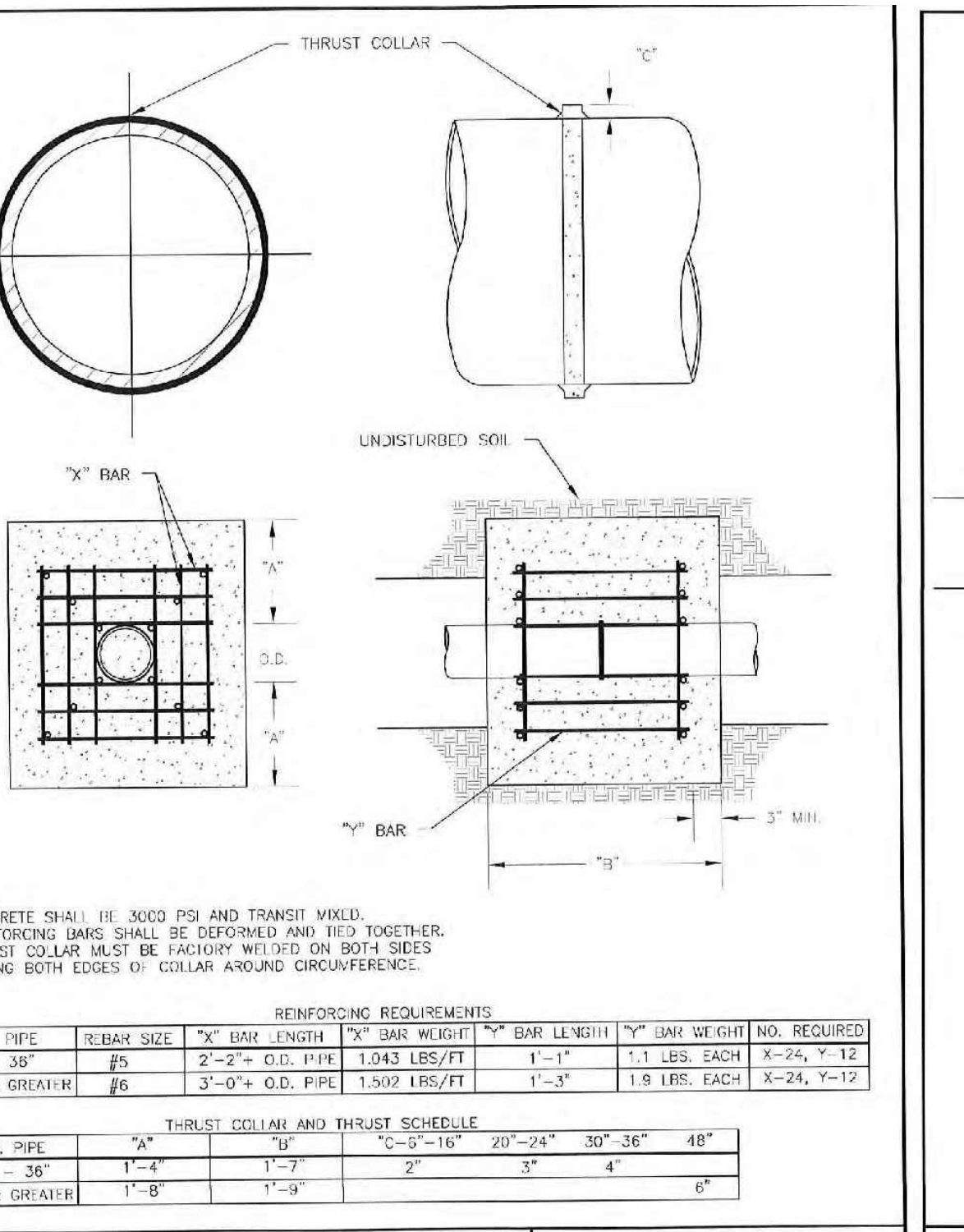
UNDERGROUND SERVICE ALERT  
CALL 811  
811

CHATHAM COUNTY  
PUBLIC UTILITIES & WATER DIVISION  
P.O. BOX 910  
PITTSBORO, NC 27312  
984 EAST STREET, SUITE 205  
PITTSBORO, NC 27312  
(919) 852-8270 (BUS)  
(919) 852-8282 (FAX)



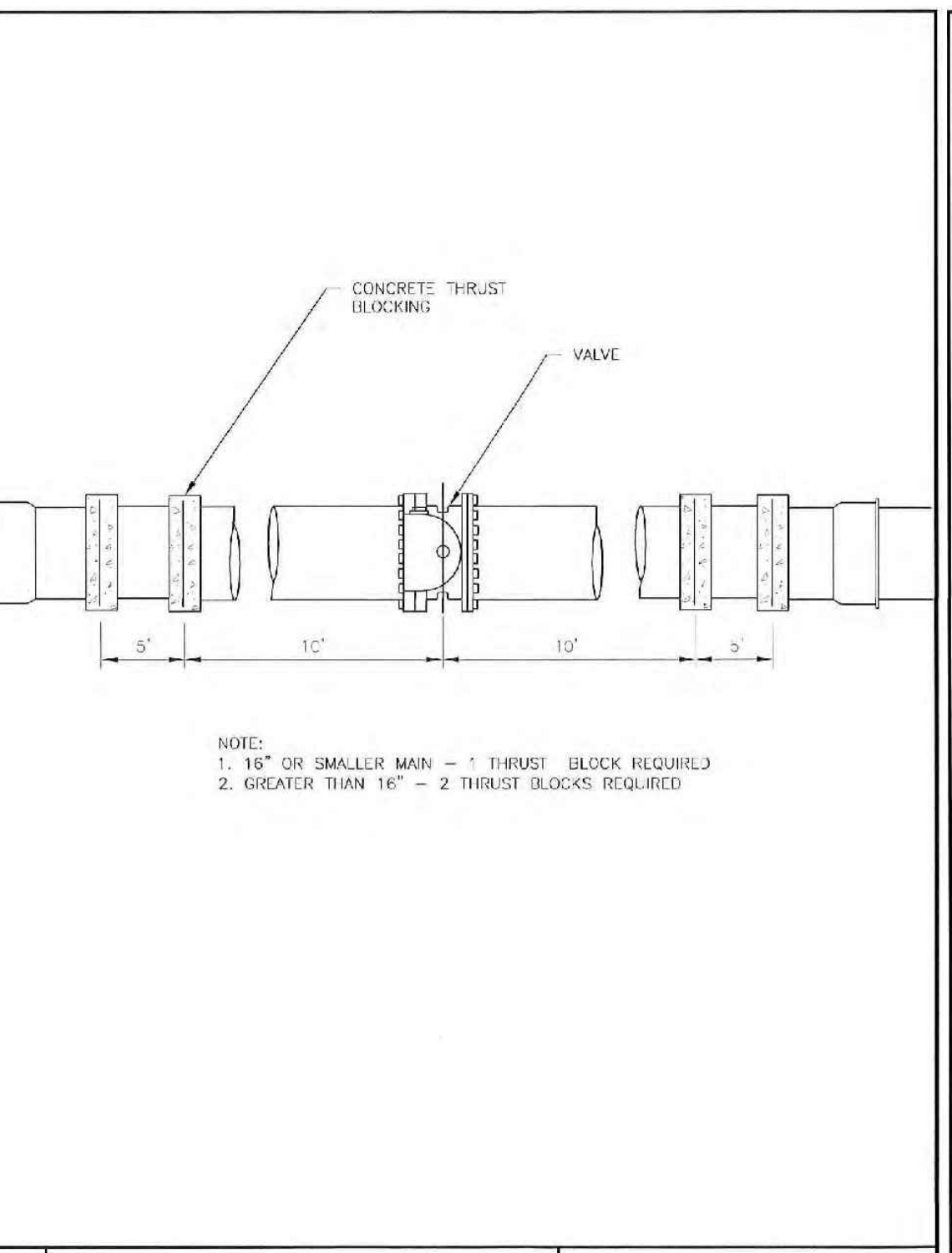
UNDERGROUND SERVICE ALERT  
CALL 811  
811

CHATHAM COUNTY  
PUBLIC UTILITIES & WATER DIVISION  
P.O. BOX 910  
PITTSBORO, NC 27312  
984 EAST STREET, SUITE 205  
PITTSBORO, NC 27312  
(919) 852-8270 (BUS)  
(919) 852-8282 (FAX)



CHATHAM COUNTY  
PUBLIC UTILITIES & WATER DIVISION  
P.O. BOX 910  
PITTSBORO, NC 27312  
984 EAST STREET, SUITE 205  
PITTSBORO, NC 27312  
(919) 852-8270 (BUS)  
(919) 852-8282 (FAX)

DETAIL  
40  
REVISION  
DATE  
JULY 1, 2015



CHATHAM COUNTY  
PUBLIC UTILITIES & WATER DIVISION  
P.O. BOX 910  
PITTSBORO, NC 27312  
984 EAST STREET, SUITE 205  
PITTSBORO, NC 27312  
(919) 852-8270 (BUS)  
(919) 852-8282 (FAX)

DETAIL  
41  
REVISION  
DATE  
JULY 1, 2015

REACTION BEARING AREAS FOR HORIZONTAL WATER PIPE BENDS  
BASED ON TEST PRESSURE OF 200 P.S.I.  
ALL AREAS GIVEN IN SQUARE FEET

SIZE AND DEGREE OF BEND	STATIC POUNDS	MINIMUM RIGID DUAL	MINIMUM RIGID DUAL	MINIMUM RIGID DUAL	MINIMUM RIGID DUAL	MINIMUM RIGID DUAL	MINIMUM RIGID DUAL	MINIMUM RIGID DUAL
6"								
11 1/4"	1,108	1	1	1	1	1	1	1
22 1/2"	2,207	1	2	2	1	1	1	3
45"	4,328	2	3	3	1	1	2	5
90"	7,955	2	4	5	1	1	2	8
PLUG	5,655	2	3	4	1	1	2	6
8"								
11 1/4"	1,970	1	1	2	1	1	1	2
22 1/2"	3,922	1	2	3	1	1	1	4
45"	7,664	2	4	5	1	1	2	8
90"	14,215	4	8	9	2	2	4	15
PLUG	10,053	3	5	6	2	2	3	10
12"								
11 1/4"	4,433	2	3	3	1	1	2	5
22 1/2"	8,878	3	5	6	2	2	3	9
45"	17,312	5	9	11	3	3	5	16
90"	31,983	8	16	19	4	4	8	32
PLUG	22,819	6	12	14	3	3	6	23
16"								
11 1/4"	7,881	2	4	5	1	1	2	6
22 1/2"	15,691	4	8	10	2	2	4	16
45"	30,778	8	16	19	4	4	8	31
90"	56,851	15	29	35	8	8	15	57
PLUG	40,213	10	21	25	5	5	10	41

CHATHAM COUNTY  
PUBLIC UTILITIES & WATER DIVISION  
P.O. BOX 910  
PITTSBORO, NC 27312  
984 EAST STREET, SUITE 205  
PITTSBORO, NC 27312  
(919) 852-8270 (BUS)  
(919) 852-8282 (FAX)

DETAIL  
38  
REVISION  
DATE  
JULY 1, 2015

**CE GROUP**

301 GLENWOOD AVE. 220  
RALEIGH, NC 27603  
PHONE: 919-367-8790  
FAX: 919-322-0032

www.cegroupinc.com  
License # C-1739

NORTH CAROLINA  
52617  
SEAL  
18894  
AS-BUILT  
NO REVISIONS

STONECREST AT NORWOOD SUBDIVISION  
CONSTRUCTION DRAWINGS  
WATER DETAILS  
CHATHAM COUNTY, NC

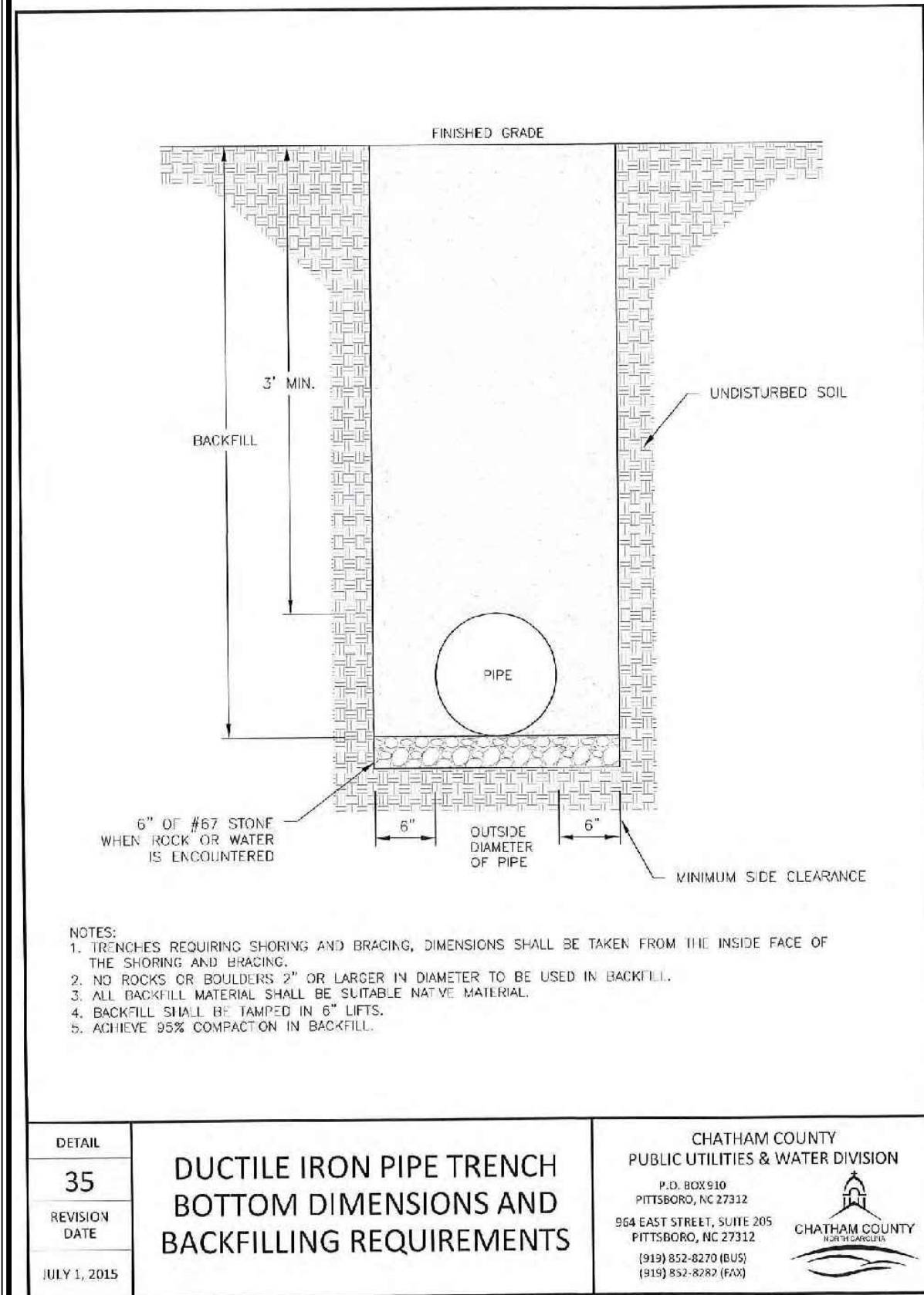
Date: May 2017  
Scale: N/A  
Drawn: JPD  
Checked: MFA  
Project No: 127-209  
Computer Dwg. Name: 127-209 water details - 1

Sheet No: 24  
Of 25

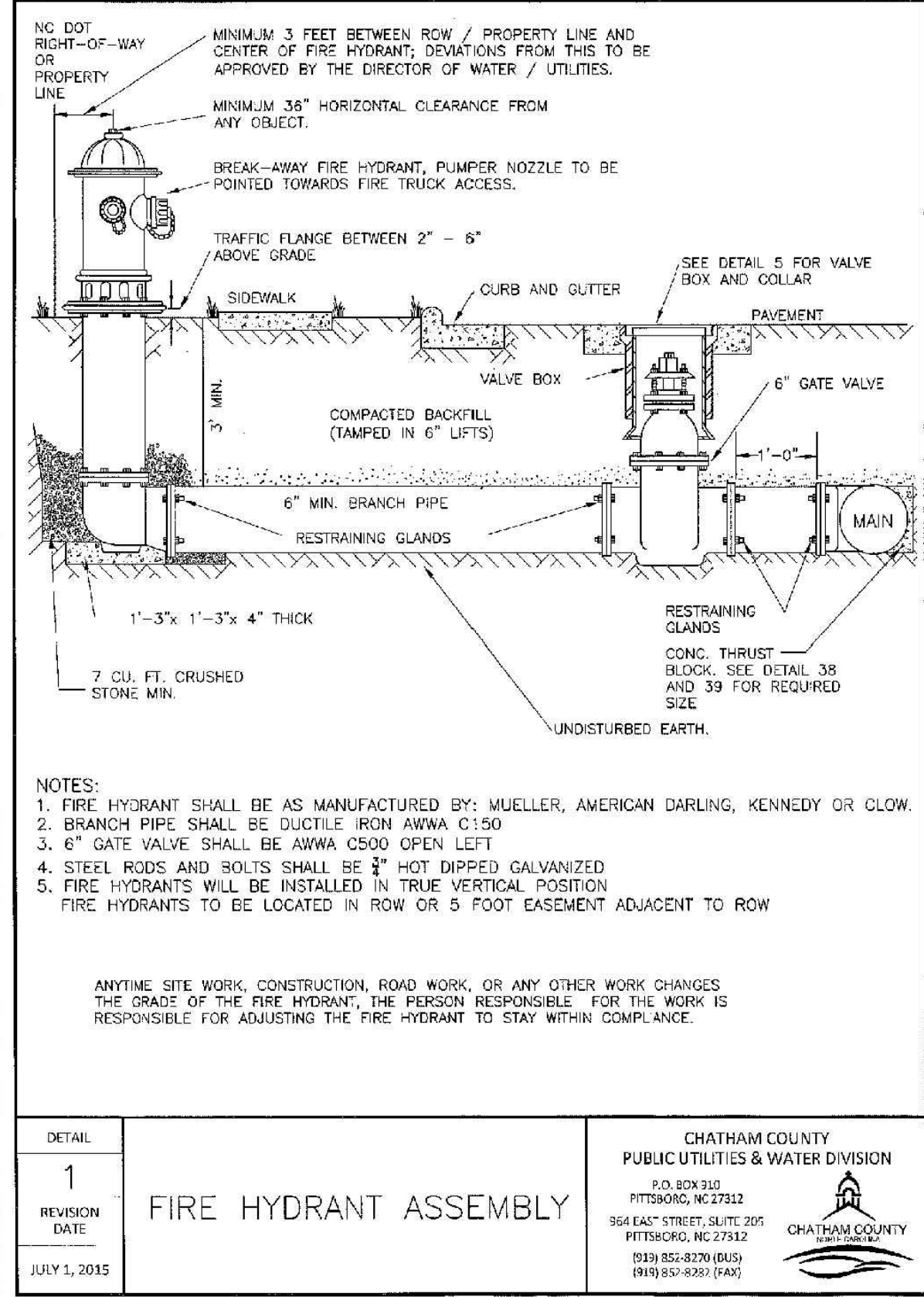
**FINAL DESIGN**  
NOT RELEASED  
FOR CONSTRUCTION



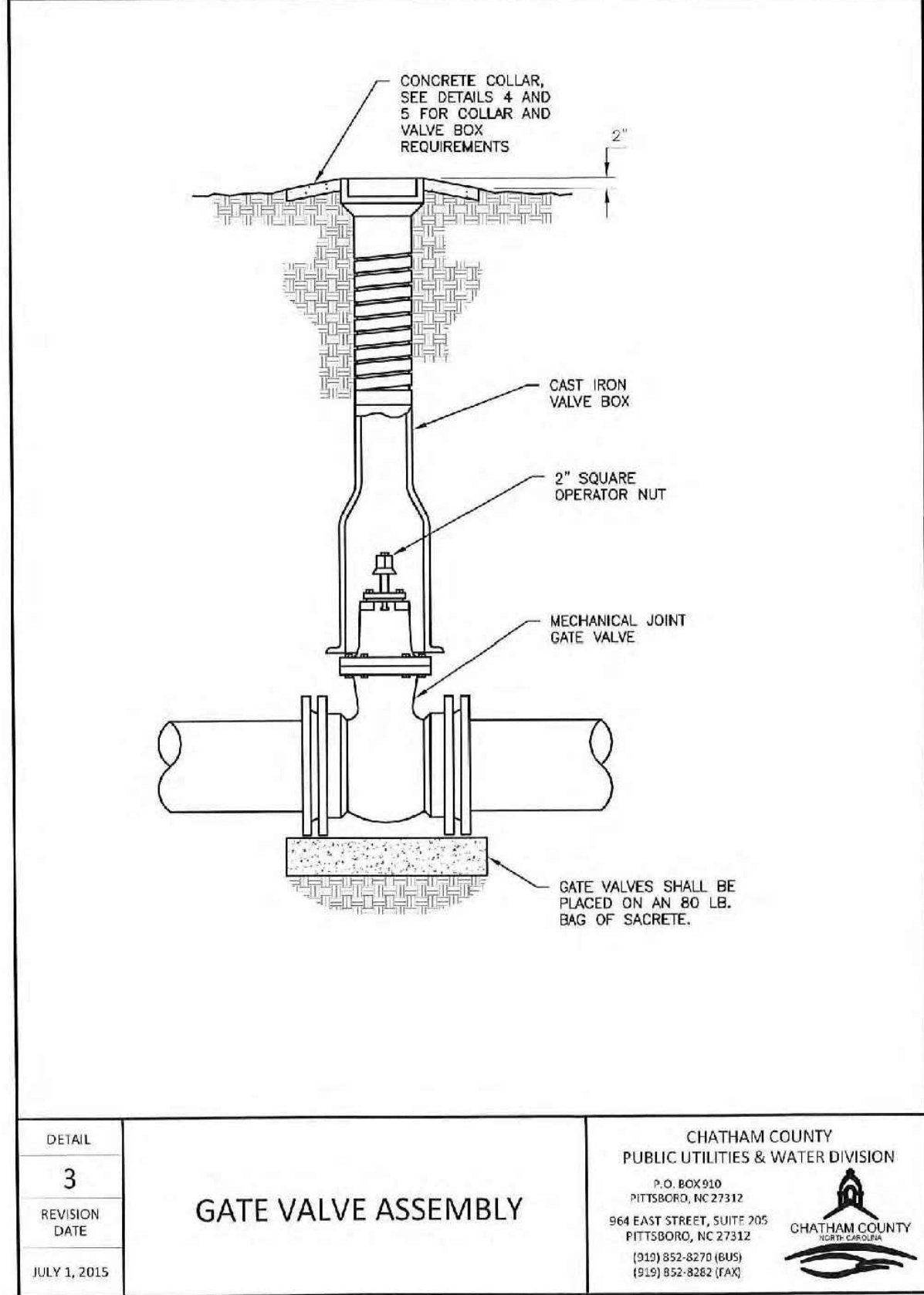
NO.	REVISIONS	DATE



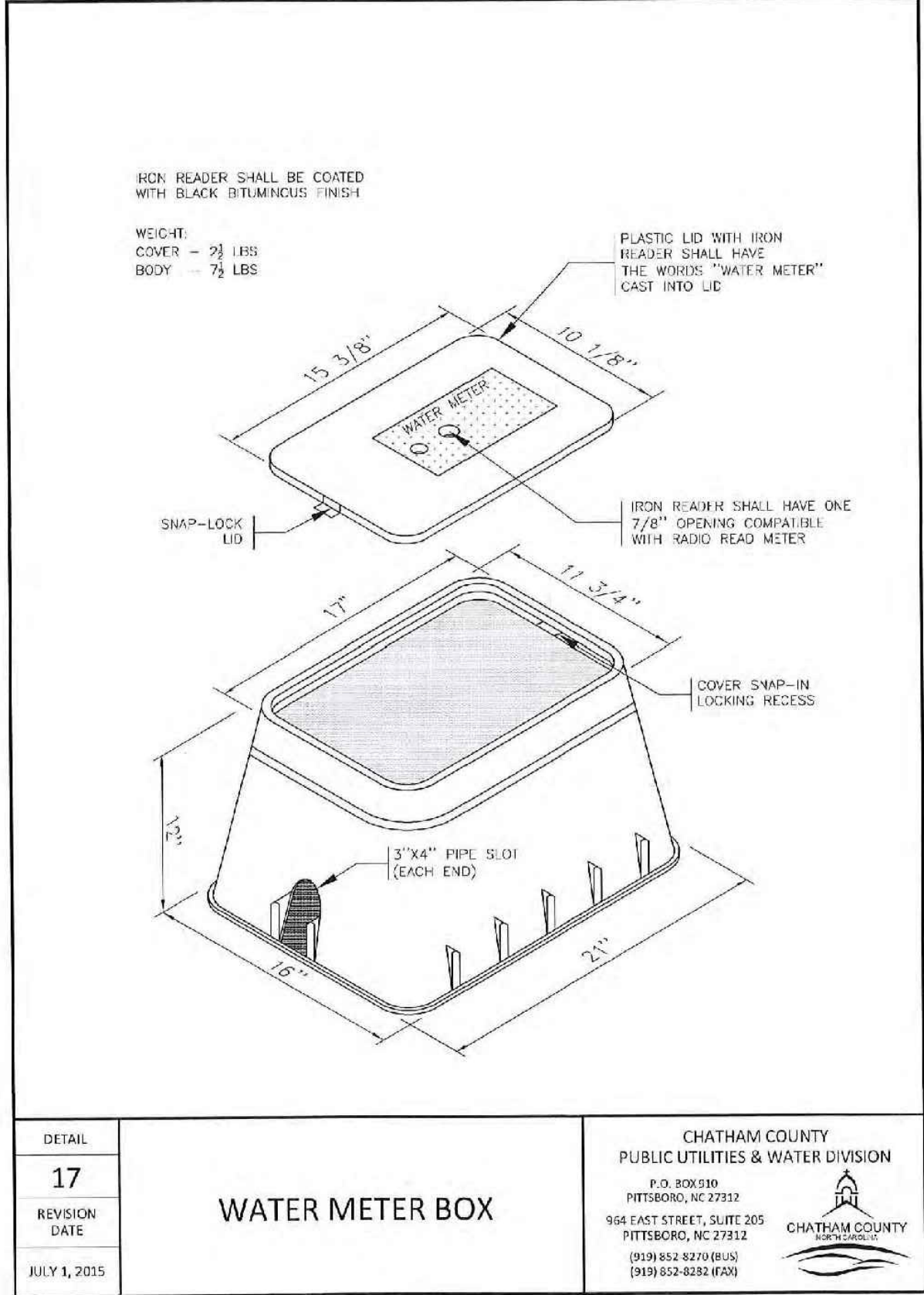
DETAIL	CHATHAM COUNTY PUBLIC UTILITIES & WATER DIVISION
35	P.O. BOX 910 PITTSBORO, NC 27312 910 EAST STREET, SUITE 205 PITTSBORO, NC 27312 (919) 852-8270 (EXT.) (919) 852-8280 (FAX)
REVISION	CHATHAM COUNTY
DATE	JULY 1, 2015
<b>DUCTILE IRON PIPE TRENCH BOTTOM DIMENSIONS AND BACKFILLING REQUIREMENTS</b>	



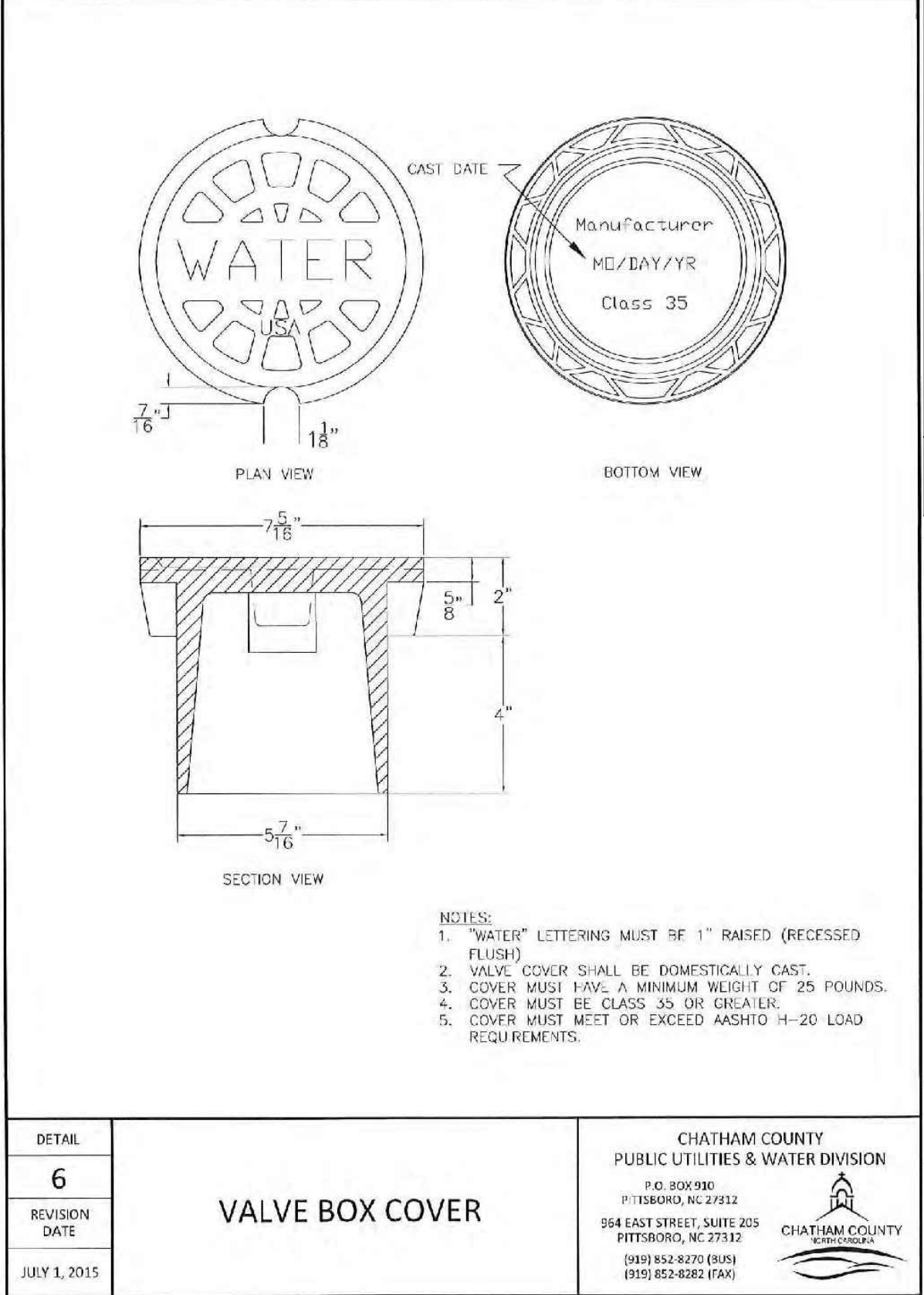
DETAIL	CHATHAM COUNTY PUBLIC UTILITIES & WATER DIVISION
1	P.O. BOX 910 PITTSBORO, NC 27312 910 EAST STREET, SUITE 205 PITTSBORO, NC 27312 (919) 852-8270 (EXT.) (919) 852-8280 (FAX)
REVISION	CHATHAM COUNTY
DATE	JULY 1, 2015
<b>FIRE HYDRANT ASSEMBLY</b>	



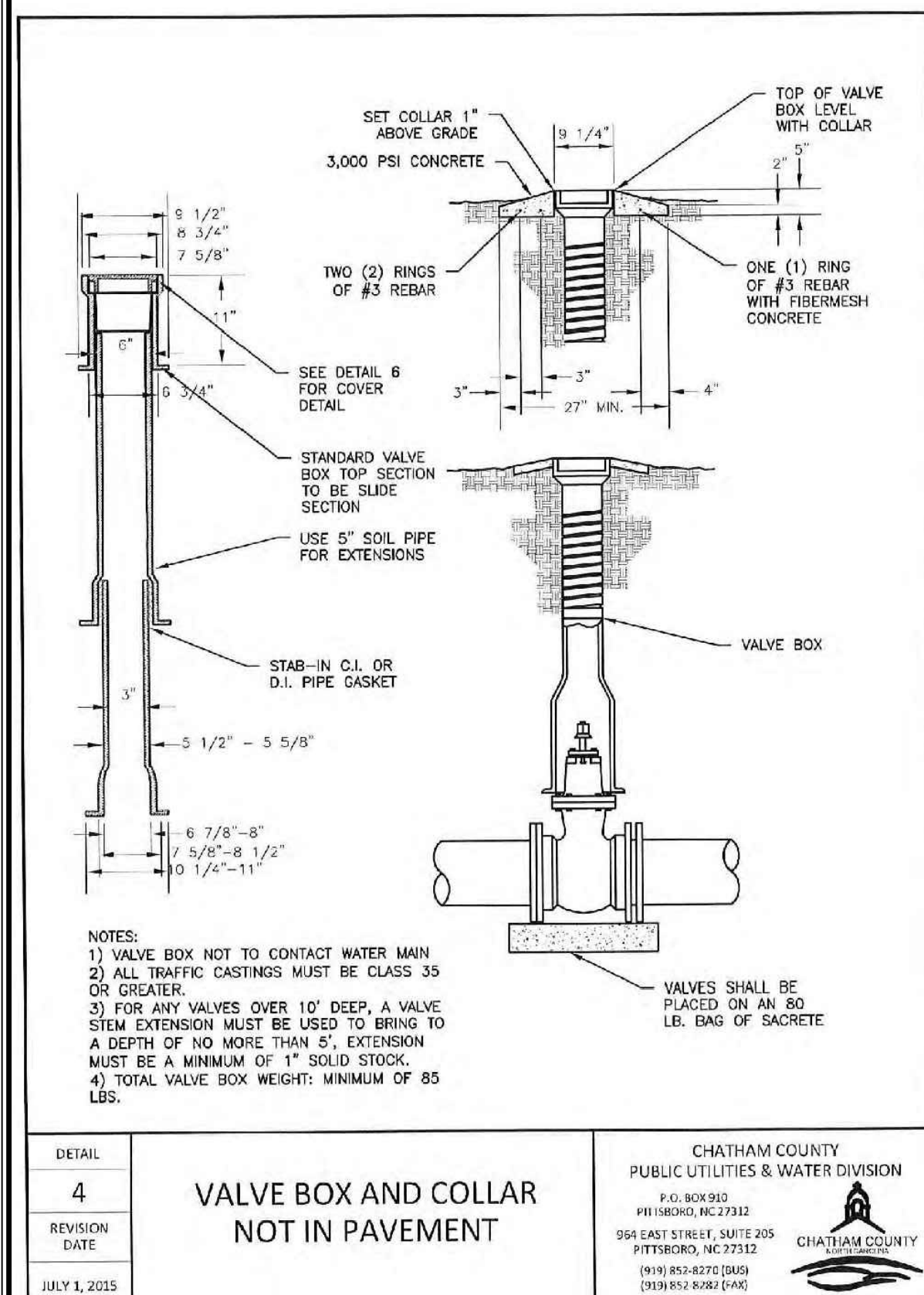
DETAIL	CHATHAM COUNTY PUBLIC UTILITIES & WATER DIVISION
3	P.O. BOX 910 PITTSBORO, NC 27312 910 EAST STREET, SUITE 205 PITTSBORO, NC 27312 (919) 852-8270 (EXT.) (919) 852-8280 (FAX)
REVISION	CHATHAM COUNTY
DATE	JULY 1, 2015
<b>GATE VALVE ASSEMBLY</b>	



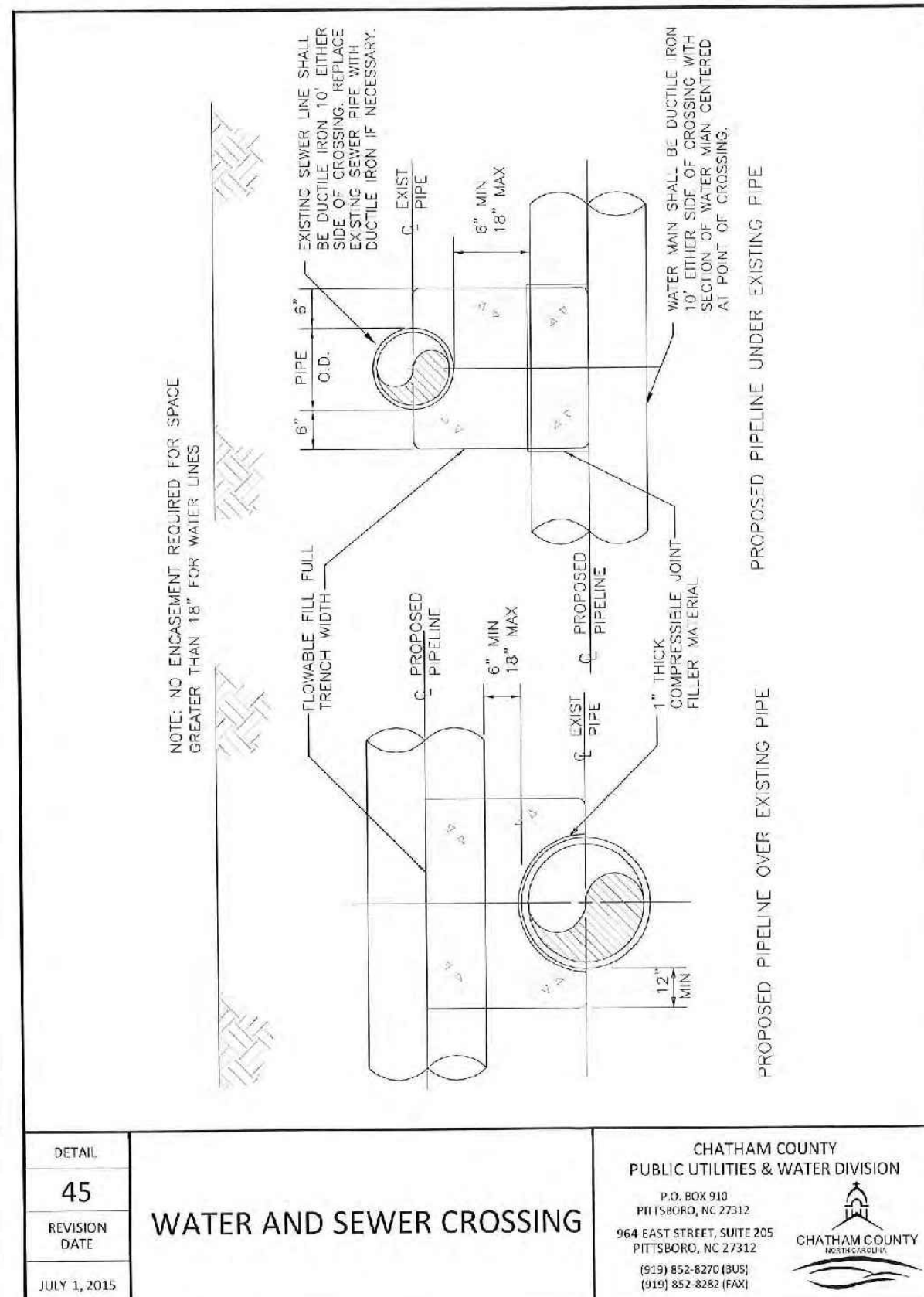
DETAIL	CHATHAM COUNTY PUBLIC UTILITIES & WATER DIVISION
17	P.O. BOX 910 PITTSBORO, NC 27312 910 EAST STREET, SUITE 205 PITTSBORO, NC 27312 (919) 852-8270 (EXT.) (919) 852-8280 (FAX)
REVISION	CHATHAM COUNTY
DATE	JULY 1, 2015
<b>WATER METER BOX</b>	



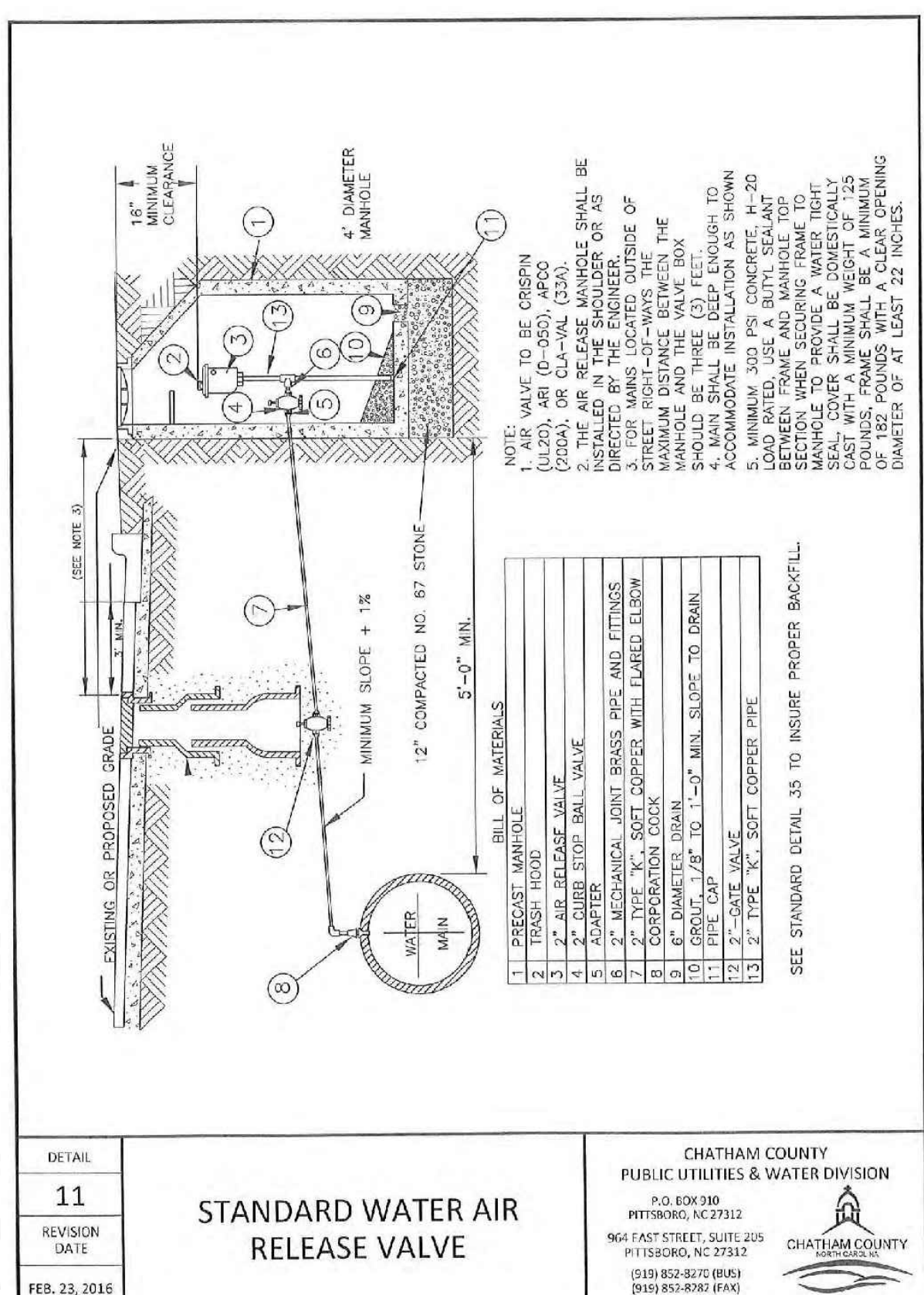
DETAIL	CHATHAM COUNTY PUBLIC UTILITIES & WATER DIVISION
6	P.O. BOX 910 PITTSBORO, NC 27312 910 EAST STREET, SUITE 205 PITTSBORO, NC 27312 (919) 852-8270 (EXT.) (919) 852-8280 (FAX)
REVISION	CHATHAM COUNTY
DATE	JULY 1, 2015
<b>VALVE BOX COVER</b>	



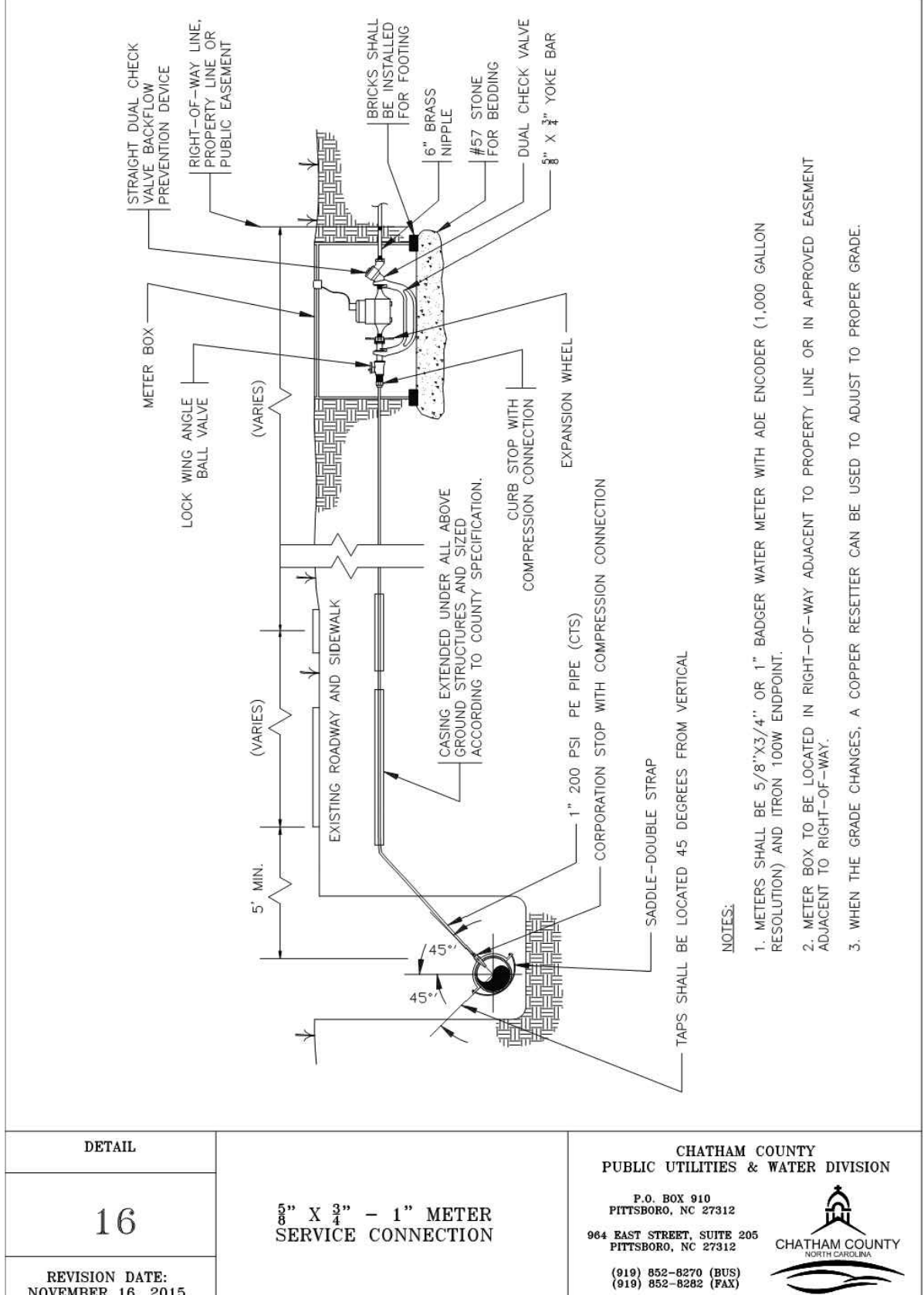
DETAIL	CHATHAM COUNTY PUBLIC UTILITIES & WATER DIVISION
4	P.O. BOX 910 PITTSBORO, NC 27312 910 EAST STREET, SUITE 205 PITTSBORO, NC 27312 (919) 852-8270 (EXT.) (919) 852-8280 (FAX)
REVISION	CHATHAM COUNTY
DATE	JULY 1, 2015
<b>VALVE BOX AND COLLAR NOT IN PAVEMENT</b>	



DETAIL	CHATHAM COUNTY PUBLIC UTILITIES & WATER DIVISION
45	P.O. BOX 910 PITTSBORO, NC 27312 910 EAST STREET, SUITE 205 PITTSBORO, NC 27312 (919) 852-8270 (EXT.) (919) 852-8280 (FAX)
REVISION	CHATHAM COUNTY
DATE	JULY 1, 2015
<b>WATER AND SEWER CROSSING</b>	



DETAIL	CHATHAM COUNTY PUBLIC UTILITIES & WATER DIVISION
11	P.O. BOX 910 PITTSBORO, NC 27312 910 EAST STREET, SUITE 205 PITTSBORO, NC 27312 (919) 852-8270 (EXT.) (919) 852-8280 (FAX)
REVISION	CHATHAM COUNTY
DATE	FEB. 23, 2016
<b>STANDARD WATER AIR RELEASE VALVE</b>	



DETAIL	CHATHAM COUNTY PUBLIC UTILITIES & WATER DIVISION
16	P.O. BOX 910 PITTSBORO, NC 27312 910 EAST STREET, SUITE 205 PITTSBORO, NC 27312 (919) 852-8270 (EXT.) (919) 852-8280 (FAX)
REVISION	CHATHAM COUNTY
DATE	NOVEMBER 16, 2015
<b>3/4" x 3/4" - 1" METER SERVICE CONNECTION</b>	

NO.	REVISIONS	DATE

**CE GROUP**

301 GLENWOOD AVE. 220  
RALEIGH, NC 27603  
PHONE: 919-367-8790  
FAX: 919-322-0032

www.cegroupinc.com

License # C-1739



STONECREST AT NORWOOD SUBDIVISION  
CONSTRUCTION DRAWINGS  
WATER DETAILS

CHATHAM COUNTY, NC

Date:	May 2017
Scale:	N/A
Drawn:	JPD
Checked:	MFA
Project No.:	127-209
Computer Dwg. Name:	127-209 water details 2

Sheet No. **25** Of 25

**FINAL DESIGN**  
NOT RELEASED  
FOR CONSTRUCTION



STOP!  
BEFORE YOU DIG CALL  
THE NC ONE CALL CENTER  
1-800-632-4949  
IT'S THE LAW!