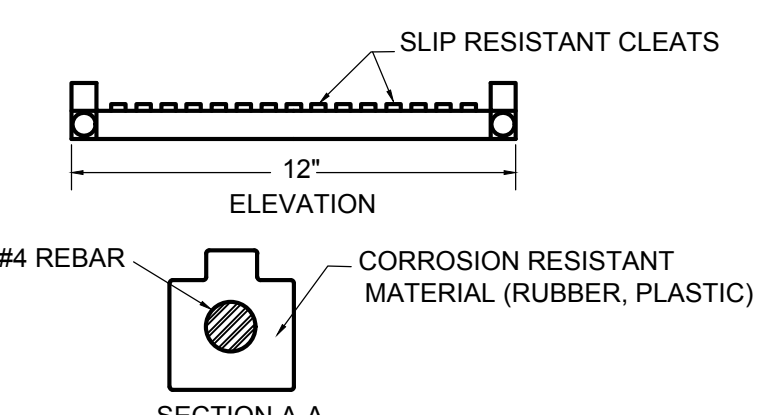
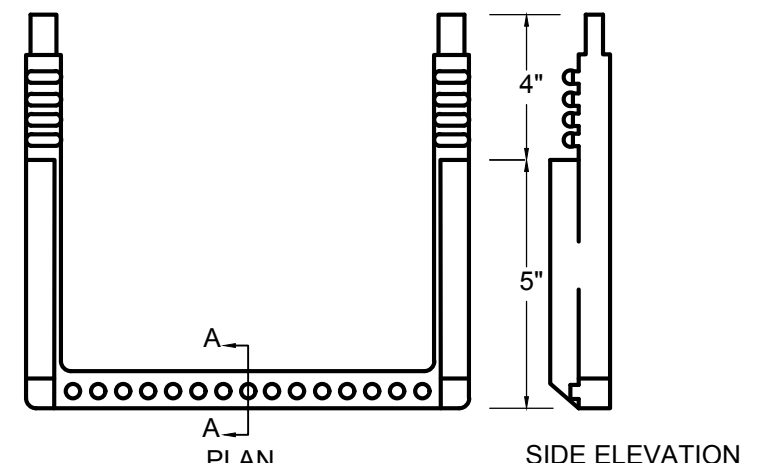


DAM EMBANKMENT CONSTRUCTION NOTES

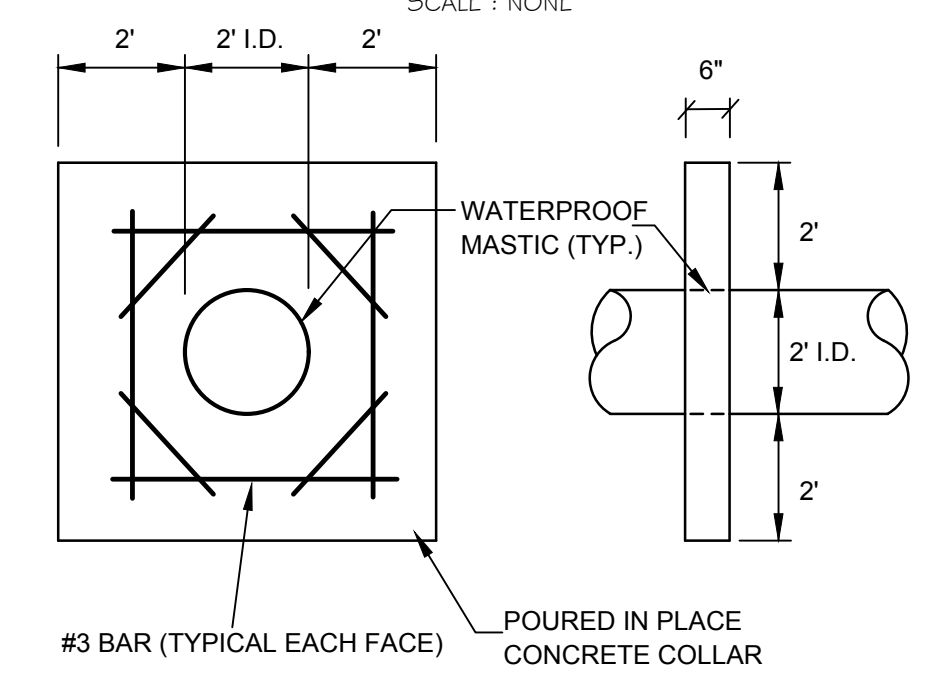
- CONTROLLED FILL, AS SPECIFIED BY THE GEOTECHNICAL ENGINEER, IN THE DAM EMBANKMENT SHALL BE PLACED IN 6-INCH LOOSE LAYERS (3-INCH LOOSE LAYERS WITHIN 3- FEET OF EITHER SIDE OF THE PRINCIPAL SPILLWAY PIPE TO A DEPTH OF 2 FEET OVER THE PIPE) AND SHALL BE COMPACTED TO A DENSITY OF NO LESS THAN 95% OF THE STANDARD PROCTOR MAXIMUM DENSITY AT A MOISTURE CONTENT OF + OR - TWO PERCENTAGE POINTS OF THE OPTIMUM MOISTURE CONTENT IN ACCORDANCE WITH ASTM D698.
- ALL VISIBLE ORGANIC DEBRIS SUCH AS ROOTS AND LIMBS SHALL BE REMOVED FROM THE FILL MATERIAL PRIOR TO COMPACTION TO THE REQUIRED DENSITY. SOILS WITH ORGANIC MATTER CONTENT EXCEEDING 5% BY WEIGHT SHALL NOT BE USED. STONES GREATER THAN 3-INCH (IN ANY DIRECTION) SHALL BE REMOVED FROM THE FILL PRIOR TO COMPACTION.
- FILL MATERIAL PLACED AT DENSITIES LOWER THAN SPECIFIED MINIMUM DENSITIES OR AT MOISTURE CONTENTS OUTSIDE THE SPECIFIED RANGES OR OTHERWISE NOT CONFORMING TO SPECIFIED REQUIREMENTS SHALL BE REMOVED AND REPLACED WITH ACCEPTABLE MATERIALS.
- ANY FILL LAYER THAT IS SMOOTH DRUM ROLLED TO REDUCE MOISTURE PENETRATION DURING A STORM EVENT SHALL BE PROPERLY SCARIFIED PRIOR TO THE PLACEMENT OF THE NEXT SOIL LIFT.
- SURFACE WATER AND STREAM FLOW SHALL BE CONTINUOUSLY CONTROLLED THROUGHOUT CONSTRUCTION AND THE PLACEMENT OF CONTROLLED FILL.
- FOUNDATION AREAS MAY REQUIRE UNDERCUTTING OF COMPRESSIBLE AND/OR UNSUITABLE SOILS IN ADDITION TO THAT INDICATED ON THE PLANS. ALL SUCH UNDERCUTTING SHALL BE PERFORMED AT THE DISCRETION OF THE GEOTECHNICAL ENGINEER AND SHALL BE MONITORED AND DOCUMENTED. IN NO CASE SHALL THERE BE AN ATTEMPT TO STABILIZE ANY PORTIONS OF THE FOUNDATION SOILS WITH CRUSHED STONE.
- TREATMENT OF SEEPAGE AREAS, SUBGRADE PREPARATION, FOUNDATION DEWATERING AND ROCK FOUNDATION PREPARATION (I.E. TREATMENT WITH SLUSH GROUTING, DENTAL CONCRETE, ETC.) MAY BE REQUIRED AT THE DISCRETION OF THE GEOTECHNICAL ENGINEER. ALL SUCH ACTIVITIES SHALL BE CLOSELY MONITORED AND DOCUMENTED BY THE GEOTECHNICAL ENGINEER.
- FILL ADJACENT TO THE RISER AND PRINCIPAL SPILLWAY PIPE SHALL BE PLACED SO THAT LIFTS ARE AT THE SAME LEVEL ON BOTH SIDES OF THE STRUCTURES.
- EARTHWORK COMPACTION WITHIN 3- FEET OF ANY STRUCTURES SHALL BE ACCOMPLISHED BY MEANS OF HAND TAMPERS, MANUALLY DIRECTED POWER TAMPERS OR PLATE COMPACTORS OR MINIATURE SELF-PROPELLED ROLLERS.
- COMPACTION BY MEANS OF DROP WEIGHTS FROM A CRANE OR HOIST SHALL NOT BE PERMITTED.
- HEAVY EQUIPMENT SHALL NOT BE ALLOWED TO PASS OVER CAST-IN-PLACE STRUCTURES UNTIL ADEQUATE CURING TIME HAS ELAPSED.
- TO RE-ESTABLISH VEGETATION AFTER CONSTRUCTION, A 2- TO 3-INCH LAYER OF TOPSOIL SHALL BE PLACED ON THE DISTURBED EMBANKMENT SURFACE AND THE AREA SEEDED AND MULCHED OR HYDROSEEDED.

GENERAL CONSTRUCTION NOTES

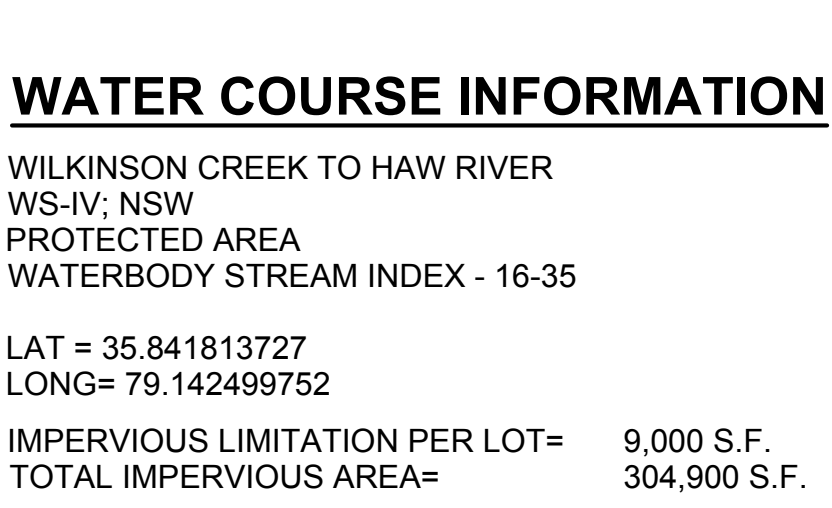
- EXISTING UNDERGROUND STRUCTURES AND UTILITIES SHOWN ARE BASED ON FIELD SURVEYS AND BEST AVAILABLE RECORD DRAWINGS. THE CONTRACTOR SHALL FIELD VERIFY CONDITIONS, INCLUDING THE HORIZONTAL AND VERTICAL LOCATION OF ALL UTILITIES, PRIOR TO STARTING CONSTRUCTION AND NOTIFY THE ENGINEER OF ANY DISCREPANCIES.
- THE CONTRACTOR SHALL CONTACT NORTH CAROLINA ONE CALL AT 1-800-632-4949. THE CONTRACTOR SHALL CALL AT LEAST 48 HOURS PRIOR TO ANY DIGGING.
- THE SUBJECT PROPERTY IS NOT LOCATED IN A FLOOD HAZARD AREA PER FEMA FIRM PANEL 9771, MAP NUMBER 3710977100, DATED 02/02/07, AND FEMA FIRM PANEL 9780, MAP NUMBER 3710978000, DATED 02/02/07.
- TOPOGRAPHIC INFORMATION PROVIDED BY CE GROUP, INC. RALEIGH, NC. PROFILE DATA FROM FIELD SURVEY. BACKGROUND TOPOGRAPHY FROM AERIAL MAPPING.
- FOR TYPICAL STREET SECTIONS, SEE SHEET 21.
- ALL STREETS ARE PUBLIC.
- ALL SLOPES 3:1 OR STEEPER & ALL AREAS OF CONCENTRATED FLOW ARE TO BE MATTED.
- NCDOT ASSUMES NO RESPONSIBILITY FOR OPERATION, MAINTENANCE OR LIABILITY OF THE STRUCTURAL STORMWATER BMP'S.



STANDARD SLIP RESISTANT MANHOLE STEP DETAIL

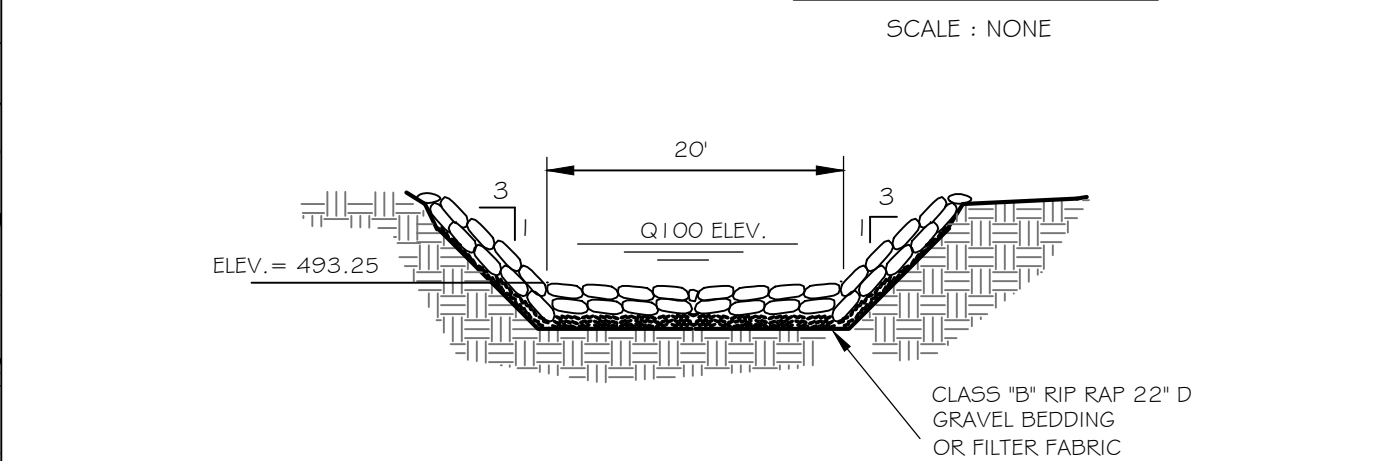
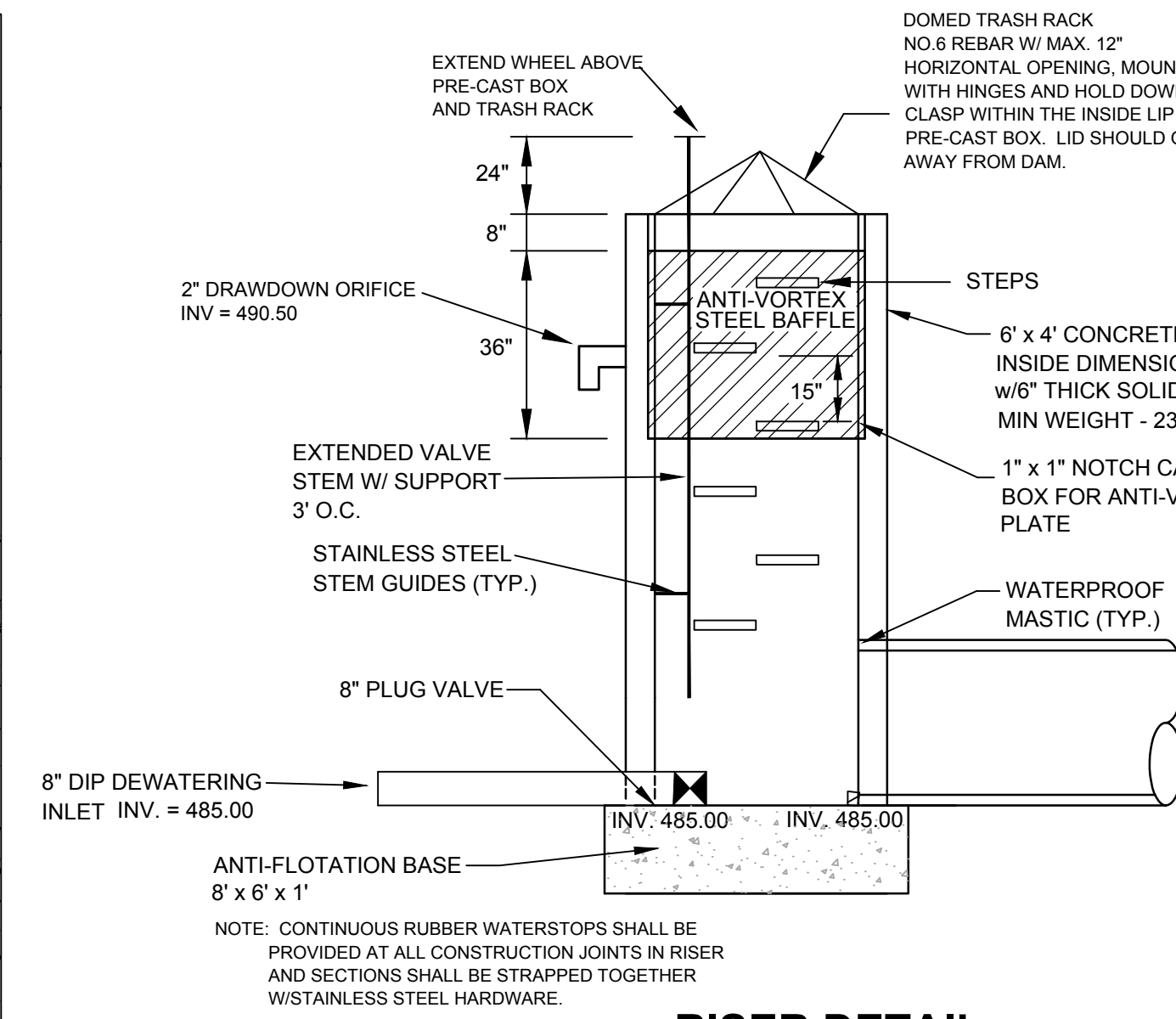


ANTI-SEEP COLLAR DETAIL



NOTES:

CONTRACTOR TO SUBMIT SHOP DRAWINGS FOR OUTLET STRUCTURE AND TRASH RACK FOR APPROVAL.
DAM EMBANKMENT IS TO BE SEEDDED IMMEDIATELY AFTER DAM CONSTRUCTION IS COMPLETE.
STORMWATER MANAGEMENT STRUCTURE IS TO BE UTILIZED AS A TEMPORARY EROSION CONTROL DEVICE INITIALLY. ONCE CONSTRUCTION IS COMPLETED AND UPSTREAM SURFACES HAVE BEEN PERMANENTLY STABILIZED, CONTRACTOR IS TO REMOVE ALL SEDIMENT FROM BASIN AND CONVERT TO PERMANENT WATER QUALITY STRUCTURE. THIS INCLUDES INSTALLING THE PROPOSED PLANTINGS ALONG THE LITTORAL SHELF.
DRAWDOWN PIPE IS NOT TO BE INSTALLED UNTIL ALL UPSTREAM SURFACES HAVE BEEN PERMANENTLY STABILIZED.

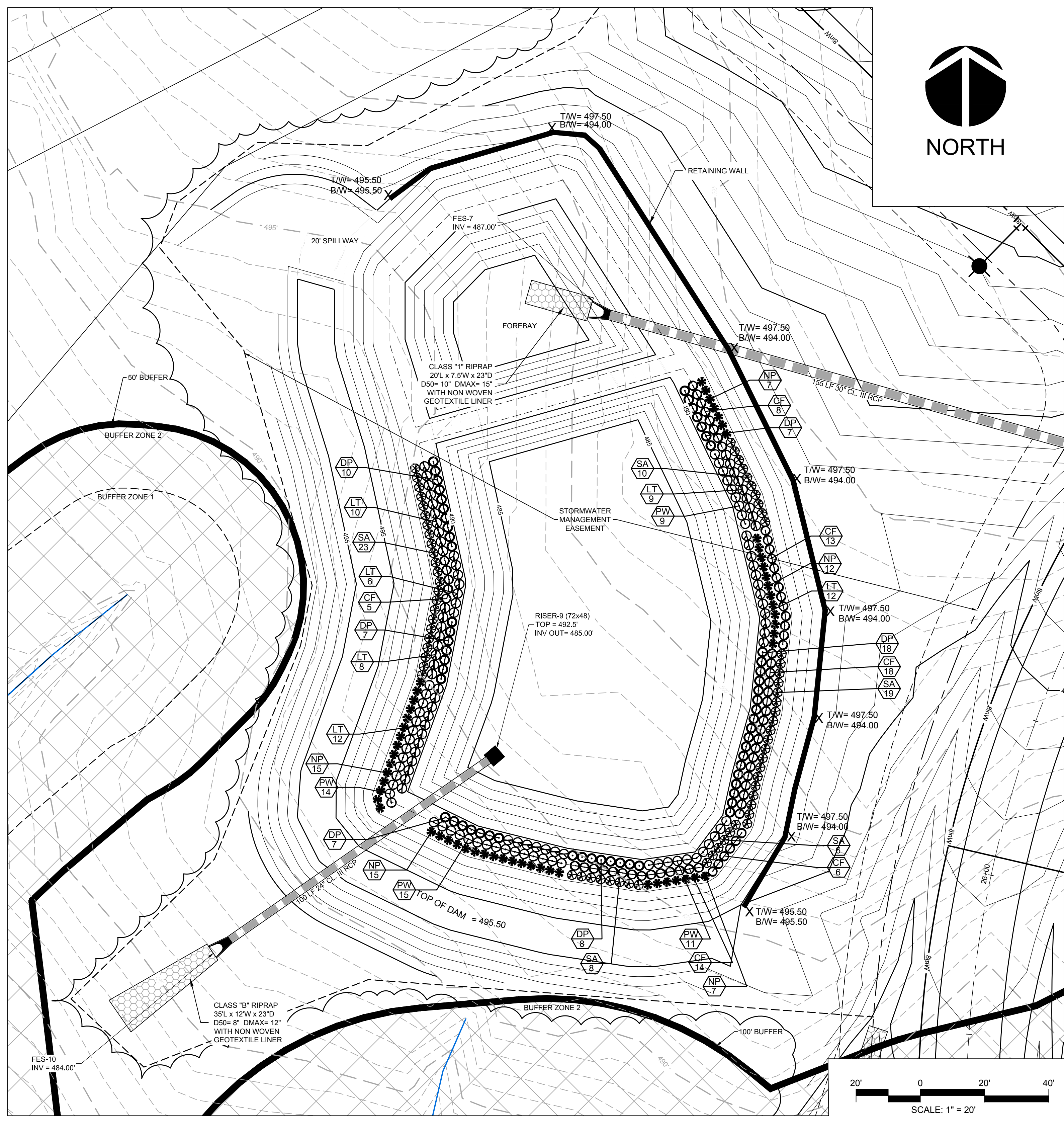


PLANTING NOTES:
LANDSCAPE CONTRACTOR SHALL PROVIDE PLANT MATERIAL FROM LOCAL SOURCE TO ENSURE SURVIVABILITY. CONTRACTOR TO PROVIDE SOURCE OF PLANT MATERIAL AND LOCATION FOR APPROVAL PRIOR TO INSTALLATION OF MATERIAL.
LOCAL WETLAND NURSERY
MELLOW MARSH FARM NURSERY - SILER CITY, NC

A MINIMUM TWO-YEAR WARRANTY PERIOD SHALL BE PROVIDED FOR PLANT SURVIVAL AND REPLACEMENT. AT THE END OF THE FIRST YEAR AND AGAIN AT THE END OF THE 2ND YEAR ALL PLANTS THAT DO NOT SURVIVE MUST BE REPLACED.

PLANT LIST

SYM.	QUAN.	BOTANICAL NAME	COMMON NAME	HT.	ROOT	REMARKS
WETLAND PLANTINGS						
SA	62	HIBISCUS COCCINEUS 'ALBA'	WHITE ROSE MALLOW	-	4" cont.	3' O.C. Shallow Land
CF	64	LOBELIA CARDINALIS	CARDINAL FLOWER	-	4" cont.	3' O.C. Shallow Land
NP	62	SACCHARUM BALDWINII	NARROW PLUMEGRASS	-	4" cont.	3' O.C. Shallow Land
DP	50	SAGITTARIA LATIFOLIA	DUCK POTATO	-	4" cont.	3' O.C. Shallow Water
LT	58	SAURURUS CERNUUS	LIZARD TAIL	-	4" cont.	3' O.C. Shallow Water
PW	49	PONTEDERIA CORDATA	PICKERELWEED	-	4" cont.	3' O.C. Shallow Water



NO.	REVISIONS	DATE
1.	REVISED PER EIC & STORM DRAINAGE COMMENTS	08/14/17

CE GROUP

301 GLENWOOD AVE. 220
RALEIGH, NC 27603
PHONE: 919-367-8790
FAX: 919-322-0032

www.cegroupinc.com

License # C-1739



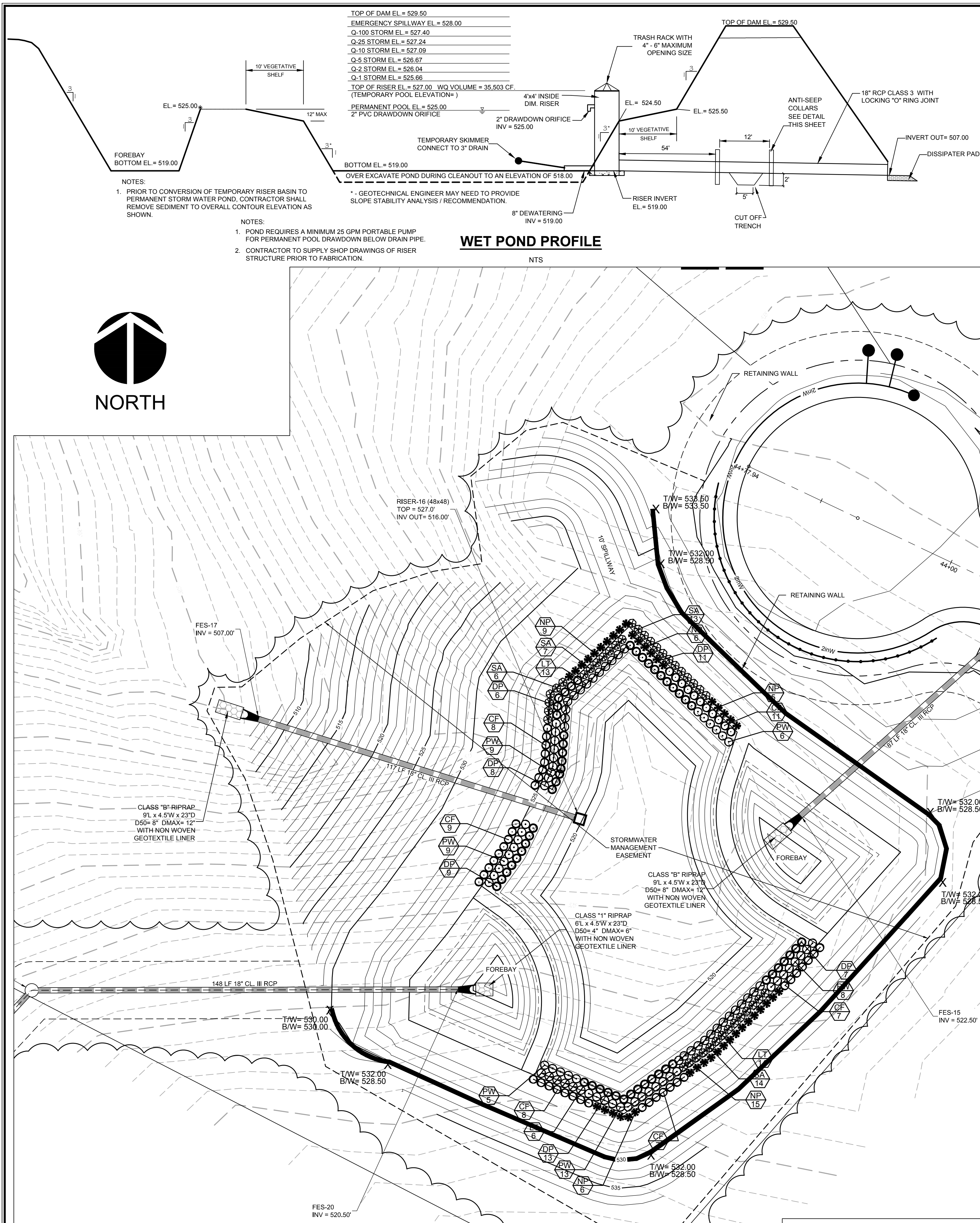
STONECREST AT NORWOOD SUBDIVISION
CONSTRUCTION DRAWINGS
STORM POND #1 PLAN

CHATHAM COUNTY, NC

Date: May 2017
Scale: 1" = 20'
Drawn: JPD
Checked: MPA
Project No: 127-209
Computer Dwg. Name: 127-209 storm pond plan 1



FINAL DESIGN
NOT RELEASED FOR CONSTRUCTION



DAM EMBANKMENT CONSTRUCTION NOTES

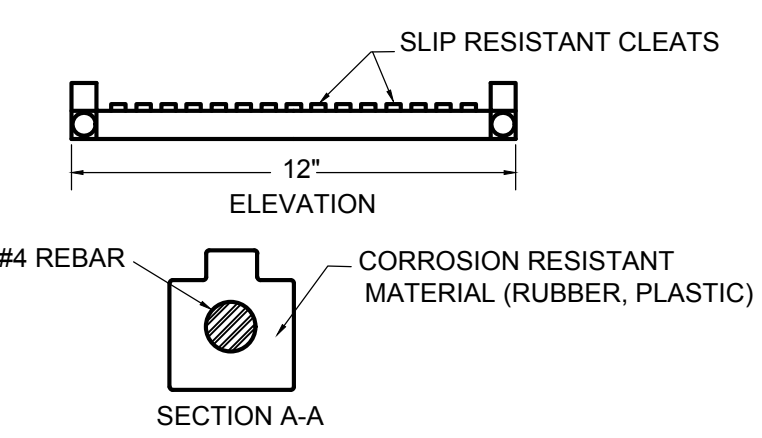
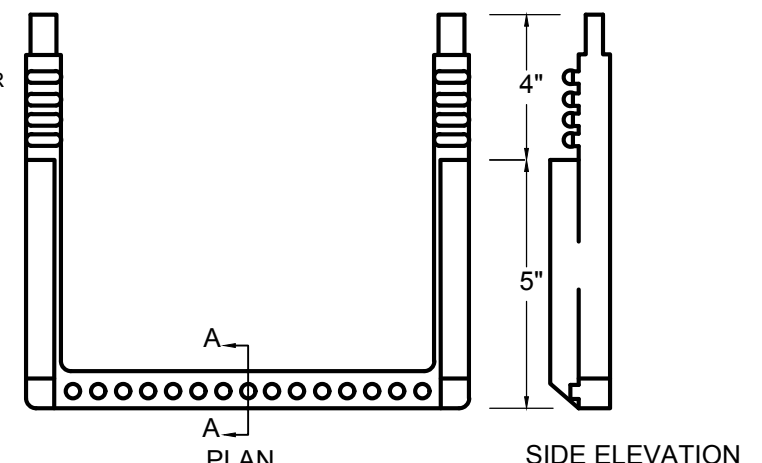
- CONTROLLED FILL, AS SPECIFIED BY THE GEOTECHNICAL ENGINEER, IN THE DAM EMBANKMENT SHALL BE PLACED IN 8-INCH LOOSE LAYERS (3-INCH LOOSE LAYERS WITHIN 3-FEET OF EITHER SIDE OF THE PRINCIPAL SPILLWAY PIPE TO A DEPTH OF 2-FEET OVER THE PIPE) AND SHALL BE COMPACTED TO A DENSITY OF NO LESS THAN 95% OF THE STANDARD PROCTOR MAXIMUM DENSITY AT A MOISTURE CONTENT OF + OR - TWO PERCENTAGE POINTS OF THE OPTIMUM MOISTURE CONTENT IN ACCORDANCE WITH ASTM D688.
- ALL VISIBLE ORGANIC DEBRIS SUCH AS ROOTS AND LIMBS SHALL BE REMOVED FROM THE FILL MATERIAL PRIOR TO COMPACTION TO THE REQUIRED DENSITY. SOILS WITH ORGANIC MATTER CONTENT EXCEEDING 5% BY WEIGHT SHALL NOT BE USED. STONES GREATER THAN 3-INCH (IN ANY DIRECTION) SHALL BE REMOVED FROM THE FILL PRIOR TO COMPACTION.
- FILL MATERIAL PLACED AT DENSITIES LOWER THAN SPECIFIED MINIMUM DENSITIES OR AT MOISTURE CONTENTS OUTSIDE THE SPECIFIED RANGES OR OTHERWISE NOT CONFORMING TO SPECIFIED REQUIREMENTS SHALL BE REMOVED AND REPLACED WITH ACCEPTABLE MATERIALS.
- ANY FILL LAYER THAT IS SMOOTH DRUM ROLLED TO REDUCE MOISTURE PENETRATION DURING A STORM EVENT SHALL BE PROPERLY SCARIFIED PRIOR TO THE PLACEMENT OF THE NEXT SOIL LIFT.
- SURFACE WATER AND STREAM FLOW SHALL BE CONTINUOUSLY CONTROLLED THROUGHOUT CONSTRUCTION AND THE PLACEMENT OF CONTROLLED FILL.
- FOUNDATION AREAS MAY REQUIRE UNDERCUTTING OF COMPRESSIBLE AND/OR UNSUITABLE SOILS IN ADDITION TO THAT INDICATED ON THE PLANS. ALL SUCH UNDERCUTTING SHALL BE PERFORMED AT THE DISCRETION OF THE GEOTECHNICAL ENGINEER AND SHALL BE MONITORED AND DOCUMENTED. IN NO CASE SHALL THERE BE AN ATTEMPT TO STABILIZE ANY PORTIONS OF THE FOUNDATION SOILS WITH CRUSHED STONE.
- TREATMENT OF SEEPAGE AREAS, SUBGRADE PREPARATION, FOUNDATION DEWATERING AND ROCK FOUNDATION PREPARATION (I.E. TREATMENT WITH SLUSH GROUTING, DENTAL CONCRETE, ETC.) MAY BE REQUIRED AT THE DISCRETION OF THE GEOTECHNICAL ENGINEER. ALL SUCH ACTIVITIES SHALL BE CLOSELY MONITORED AND DOCUMENTED BY THE GEOTECHNICAL ENGINEER.
- FILL ADJACENT TO THE RISER AND PRINCIPAL SPILLWAY PIPE SHALL BE PLACED SO THAT LIFTS ARE AT THE SAME LEVEL ON BOTH SIDES OF THE STRUCTURES.
- EARTHWORK COMPACTION WITHIN 3-FEET OF ANY STRUCTURES SHALL BE ACCOMPLISHED BY MEANS OF HAND TAMPERS, MANUALLY DIRECTED POWER TAMPERS OR PLATE COMPACTORS OR MINIATURE SELF-PROPELLED ROLLERS.
- COMPACTION BY MEANS OF DROP WEIGHTS FROM A CRANE OR HOIST SHALL NOT BE PERMITTED.
- HEAVY EQUIPMENT SHALL NOT BE ALLOWED TO PASS OVER CAST-IN-PLACE STRUCTURES UNTIL ADEQUATE CURING TIME HAS ELAPSED.
- TO RE-ESTABLISH VEGETATION AFTER CONSTRUCTION, A 2- TO 3-INCH LAYER OF TOPSOIL SHALL BE PLACED ON THE DISTURBED EMBANKMENT SURFACE AND THE AREA SEEDED AND MULCHED OR HYDROSEEDING.

NOTES:

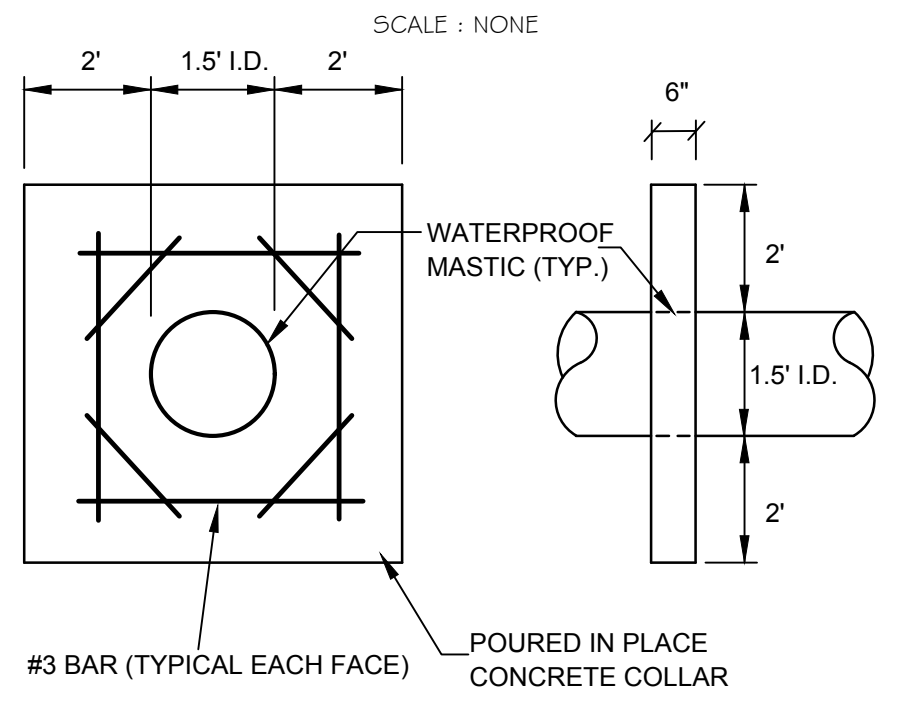
CONTRACTOR TO SUBMIT SHOP DRAWINGS FOR OUTLET STRUCTURE AND TRASH RACK FOR APPROVAL. DAM EMBANKMENT IS TO BE SEEDED IMMEDIATELY AFTER DAM CONSTRUCTION IS COMPLETE. STORMWATER MANAGEMENT STRUCTURE IS TO BE UTILIZED AS A TEMPORARY EROSION CONTROL DEVICE INITIALLY. ONCE CONSTRUCTION IS COMPLETED AND UPSTREAM SURFACES HAVE BEEN PERMANENTLY STABILIZED, CONTRACTOR IS TO REMOVE ALL SEDIMENT FROM BASIN AND CONVERT TO PERMANENT WATER QUALITY STRUCTURE. THIS INCLUDES INSTALLING THE PROPOSED PLANTINGS ALONG THE LITTORAL SHELF. DRAWDOWN PIPE IS NOT TO BE INSTALLED UNTIL ALL UPSTREAM SURFACES HAVE BEEN PERMANENTLY STABILIZED.

GENERAL CONSTRUCTION NOTES

- EXISTING UNDERGROUND STRUCTURES AND UTILITIES SHOWN ARE BASED ON FIELD SURVEYS AND BEST AVAILABLE RECORD DRAWINGS. THE CONTRACTOR SHALL FIELD VERIFY CONDITIONS, INCLUDING THE HORIZONTAL AND VERTICAL LOCATION OF ALL UTILITIES, PRIOR TO STARTING CONSTRUCTION AND NOTIFY THE ENGINEER OF ANY DISCREPANCIES.
- THE CONTRACTOR SHALL CONTACT NORTH CAROLINA ONE CALL AT 1-800-632-4949. THE CONTRACTOR SHALL CALL AT LEAST 48 HOURS PRIOR TO ANY DIGGING.
- THE SUBJECT PROPERTY IS NOT LOCATED IN A FLOOD HAZARD AREA PER FEMA FIRM PANEL 9771, MAP NUMBER 3710977100J, DATED 02/02/07, AND FEMA FIRM PANEL 9790, MAP NUMBER 3710979000J, DATED 02/02/07.
- TOPOGRAPHIC INFORMATION PROVIDED BY CE GROUP, INC. RALEIGH, NC. PROFILE DATA FROM FIELD SURVEY. BACKGROUND TOPOGRAPHY FROM AERIAL MAPPING.
- FOR TYPICAL STREET SECTIONS, SEE SHEET 21.
- ALL STREETS ARE PUBLIC.
- ALL SLOPES 3:1 OR STEEPER & ALL AREAS OF CONCENTRATED FLOW ARE TO BE MATTED.
- NC DOT ASSUMES NO RESPONSIBILITY FOR OPERATION, MAINTENANCE OR LIABILITY OF THE STRUCTURAL STORMWATER BMP'S.



STANDARD SLIP RESISTANT MANHOLE STEP DETAIL

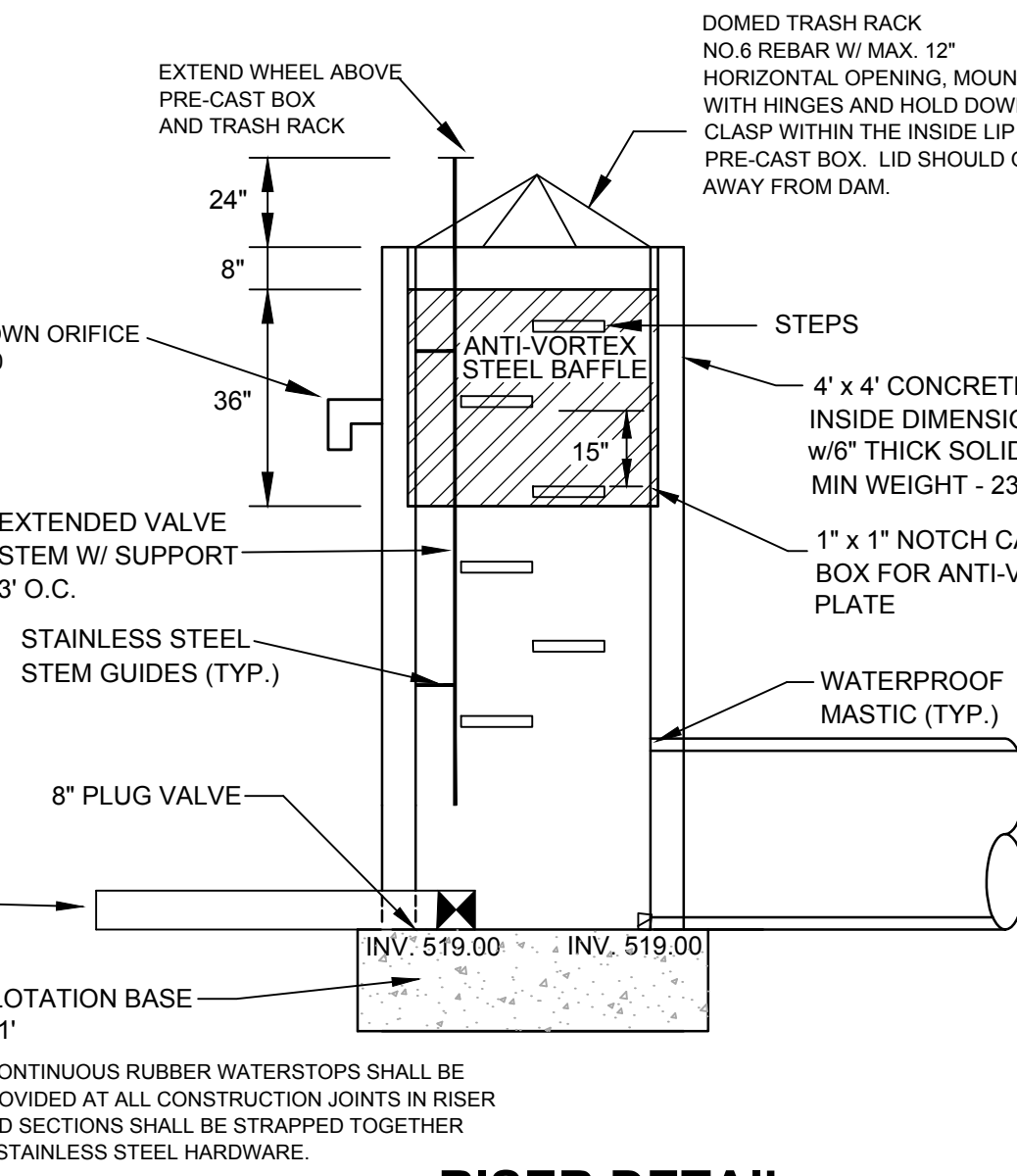


ANTI-SEEP COLLAR DETAIL

NOTE: CONCRETE SHALL BE 3000 PSI @ 28 DAYS
 REINFORCING STEEL, ASTM A615, GRADE 60, FY - 60,000 PSI
 COLLAR SHOULD BE PLACED AT LEAST TWO FEET FROM PIPE JOINT

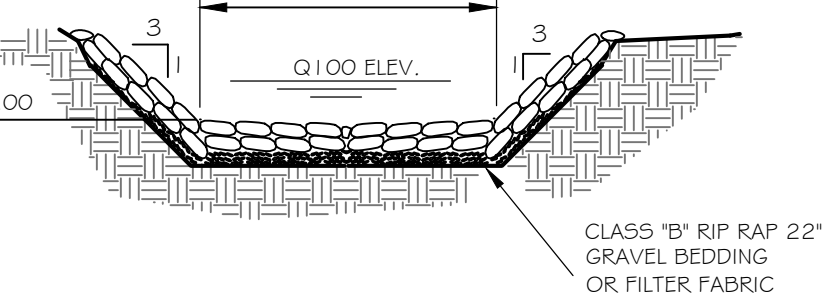
WATER COURSE INFORMATION

WILKINSON CREEK TO HAW RIVER
 WS-IV; NSW
 PROTECTED AREA
 WATERBODY STREAM INDEX - 16-35
 LAT = 35.841813727
 LONG = 79.142499752
 IMPERVIOUS LIMITATION PER LOT = 9,000 S.F.
 TOTAL IMPERVIOUS AREA = 249,752 S.F.



RISER DETAIL

NOTE: CONTINUOUS RUBBER WATERSTOPS SHALL BE PROVIDED AT ALL CONSTRUCTION JOINTS IN RISER AND SECTIONS SHALL BE STRAPPED TOGETHER WITH STAINLESS STEEL HARDWARE.



EMERGENCY SPILLWAY

PLANTING NOTES:

LANDSCAPE CONTRACTOR SHALL PROVIDE PLANT MATERIAL FROM LOCAL SOURCE TO ENSURE SURVIVABILITY. CONTRACTOR TO PROVIDE SOURCE OF PLANT MATERIAL AND LOCATION FOR APPROVAL PRIOR TO INSTALLATION OF MATERIAL.
LOCAL WETLAND NURSERY
 MELOW MARSH FARM NURSERY - SILER CITY, NC
 A MINIMUM TWO-YEAR WARRANTY PERIOD SHALL BE PROVIDED FOR PLANT SURVIVAL AND REPLACEMENT. AT THE END OF THE FIRST YEAR AND AGAIN AT THE END OF THE 2ND YEAR ALL PLANTS THAT DO NOT SURVIVE MUST BE REPLACED.

PLANT LIST

SYM.	QUAN.	BOTANICAL NAME	COMMON NAME	HT.	ROOT	REMARKS
WETLAND PLANTINGS						
SA	40	HIBISCUS COCCINEUS 'ALBA'	WHITE ROSE MALLOW	-	4" cont.	3' O.C. Shallow Land
CF	50	LOBELIA CARDINALIS	CARDINAL FLOWER	-	4" cont.	3' O.C. Shallow Land
NP	41	SACCHARUM BALDWINII	NARROW PLUMEGRASS	-	4" cont.	3' O.C. Shallow Land
DP	54	SAGITTARIA LATIFOLIA	DUCK POTATO	-	4" cont.	3' O.C. Shallow Water
LT	33	SAURURUS CERNUUS	LIZARD TAIL	-	4" cont.	3' O.C. Shallow Water
PW	50	PONTEDERIA CORDATA	PICKERELWEED	-	4" cont.	3' O.C. Shallow Water

STORMWATER MANAGEMENT CERTIFICATION
 I Mark Ashness certify that the stormwater management facilities and practices will control and treat the runoff from the 1 year 1-hour storm event for the total drainage area of the structure, that the designs and plans are sufficient to comply with the applicable standards and policies found in the NC DENR Stormwater BMP Design Manual, and that the designs and plans ensure compliance with the County's Stormwater Ordinance.



STOP!
 BEFORE YOU DIG CALL THE NC ONE CALL CENTER 1-800-632-4949 IT'S THE LAW!

FINAL DESIGN
 NOT RELEASED FOR CONSTRUCTION

NO.	REVISIONS	DATE
1.	REVISED PER EIC & STORM DRAINAGE COMMENTS	08/14/17

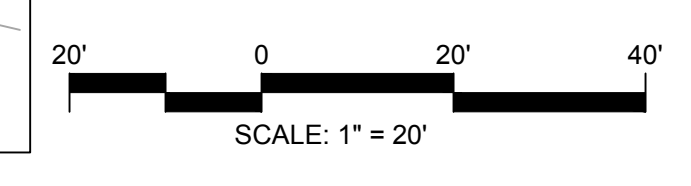
CE GROUP
 301 GLENWOOD AVE. 220
 RALEIGH, NC 27603
 PHONE: 919-367-8790
 FAX: 919-322-0032
 www.cegroupinc.com
 License # C-1739



STONECREST AT NORWOOD SUBDIVISION
 CONSTRUCTION DRAWINGS
 STORM POND #2 PLAN
 CHATHAM COUNTY, NC

Date: May 2017
 Scale: 1" = 20'
 Drawn: JPD
 Checked: MPA
 Project No: 127-209
 Computer Dwg. Name: 127-209 storm_pond_plan_2

Sheet No: **19** Of 25



NO.	REVISIONS	DATE

STATE OF NORTH CAROLINA
DEPT. OF TRANSPORTATION
RALEIGH, N.C.

ENGLISH STANDARD DRAWING FOR
BRICK GRATED DROP INLET TYPE 'B'
12" THRU 36" PIPE

SHEET 1 OF 1
840.27

GENERAL NOTES:
USE CLASS "B" CONCRETE THROUGHOUT.
JUNDO BRICK WILL BE PERMITTED. CONCRETE BRICK OR 4" SOLID CONCRETE BLOCK MAY BE USED IN LIEU OF CLAY BRICKS.
PROVIDE ALL DROP INLETS OVER 3'-6" IN DEPTH WITH STEPS 12" ON CENTER. USE STEPS WHICH COMPLY WITH STD. DRAWING 840.06.
USE #4 BAR DOWELS AT 12" CENTERS.
USE FORMS FOR THE CONSTRUCTION OF THE BOTTOM SLAB.
IF REINFORCED CONCRETE PIPE IS SET IN BOTTOM SLAB OF BOX, ADD TO SLAB AND SHOW ON STD. DWG. 840.06.
CONSTRUCT WITH PIPE JOINTS MATCHING.
MAX. DEPTH OF THIS STRUCTURE FROM TOP OF BOTTOM SLAB TO TOP ELEVATION IS 12 FEET.
USE STANDARD FRAMES AND GRATES 840.22 (SHOW), 840.24(SHOW), 840.20, 840.28, AND 840.33.
SEE STANDARD DRAWING 840.25 FOR ATTACHMENT OF FRAMES AND GRATES NOT SHOWN.
CHAMFER ALL EXPOSED CORNERS 1".
DRAWING NOT TO SCALE.

PIPE	SPAN	WIDTH	HEIGHT	BOTTOM SLAB	BARS E	BARS F	BARS G	BARS H	REINFORCING STEEL - NO. 4 BARS	DU. CONC. IN BOX	DU. CONC. IN SLAB	BRICK AND MORTAR	CONCRETE	PER. PIPE	C.S.	R.C.
12"	3'-0"	2'-0"	2'-0"	1'-6"	0.309	0.348	0.388	1.148	0.030	0.032		0.096	0.031	0.031		
15"	3'-0"	2'-0"	2'-0"	1'-6"	0.309	0.348	0.388	1.148	0.030	0.032		0.096	0.031	0.031		
18"	3'-0"	2'-0"	2'-0"	1'-6"	0.309	0.348	0.388	1.148	0.030	0.032		0.096	0.031	0.031		
24"	3'-0"	2'-0"	2'-0"	1'-6"	0.309	0.348	0.388	1.148	0.030	0.032		0.096	0.031	0.031		
30"	3'-0"	2'-0"	2'-0"	1'-6"	0.309	0.348	0.388	1.148	0.030	0.032		0.096	0.031	0.031		
36"	3'-0"	2'-0"	2'-0"	1'-6"	0.309	0.348	0.388	1.148	0.030	0.032		0.096	0.031	0.031		

STATE OF NORTH CAROLINA
DEPT. OF TRANSPORTATION
RALEIGH, N.C.

ENGLISH STANDARD DRAWING FOR
CONCRETE GRATED DROP INLET TYPE 'A'
12" THRU 72" PIPE

SHEET 1 OF 1
840.17

GENERAL NOTES:
USE CLASS "B" CONCRETE THROUGHOUT.
PROVIDE ALL GRATED DROP INLETS OVER 3'-6" IN DEPTH WITH STEPS 12" ON CENTER. USE STEPS WHICH COMPLY WITH STD. DRAWING 840.06.
OPTIONAL CONSTRUCTION - ANCHORED WITH #4 BARS: USE #4 BAR DOWELS AT 12" CENTERS AS DIRECTED BY THE ENGINEER.
USE FORMS FOR THE CONSTRUCTION OF THE BOTTOM SLAB.
IF REINFORCED CONCRETE PIPE IS SET IN BOTTOM SLAB OF BOX, ADD TO SLAB AND SHOW ON STD. DWG. 840.06.
CONSTRUCT WITH PIPE JOINTS MATCHING.
USE STANDARD FRAMES AND GRATES 840.22 (SHOW), 840.24(SHOW), 840.20, 840.28, AND 840.33.
SEE STANDARD DRAWING 840.25 FOR ATTACHMENT OF FRAMES AND GRATES NOT SHOWN.
CHAMFER ALL EXPOSED CORNERS 1".
DRAWING NOT TO SCALE.
MAX. DEPTH OF THIS STRUCTURE FROM TOP OF BOTTOM SLAB TO TOP ELEVATION IS 12 FEET.

STATE OF NORTH CAROLINA
DEPT. OF TRANSPORTATION
RALEIGH, N.C.

ENGLISH STANDARD DRAWING FOR
BRICK GRATED DROP INLET TYPE 'A'
12" THRU 72" PIPE

SHEET 2 OF 3
840.26

QUANTITY TO BE ADDED FOR EACH 2' INCREMENT INLET OPENING

ADDITIONAL INLETS	2'-0"	4'-0"	6'-0"	8'-0"	10'-0"	12'-0"
CONCRETE CU. YDS.	0.191	0.417	0.655	0.897	1.145	1.393
CONCRETE APRON CU. YDS.	0.085	0.135	0.185	0.263	0.329	0.395

STATE OF NORTH CAROLINA
DEPT. OF TRANSPORTATION
RALEIGH, N.C.

ENGLISH STANDARD DRAWING FOR
BRICK GRATED DROP INLET TYPE 'D'
12" THRU 36" PIPE

SHEET 1 OF 1
840.28

GENERAL NOTES:
USE CLASS "B" CONCRETE THROUGHOUT.
JUNDO BRICK WILL BE PERMITTED. CONCRETE BRICK OR 4" SOLID CONCRETE BLOCK MAY BE USED IN LIEU OF CLAY BRICKS.
PROVIDE ALL DROP INLETS OVER 3'-6" IN DEPTH WITH STEPS 12" ON CENTER. USE STEPS WHICH COMPLY WITH STD. DRAWING 840.06.
USE #4 BAR DOWELS AT 12" CENTERS.
USE FORMS FOR THE CONSTRUCTION OF THE BOTTOM SLAB.
IF REINFORCED CONCRETE PIPE IS SET IN BOTTOM SLAB OF BOX, ADD TO SLAB AND SHOW ON STD. DWG. 840.06.
CONSTRUCT WITH PIPE JOINTS MATCHING.
MAX. DEPTH OF THIS STRUCTURE FROM TOP OF BOTTOM SLAB TO TOP ELEVATION IS 12 FEET.
USE STANDARD FRAMES AND GRATES 840.22 (SHOW), 840.24(SHOW), 840.20, 840.28, AND 840.33.
SEE STANDARD DRAWING 840.25 FOR ATTACHMENT OF FRAMES AND GRATES NOT SHOWN.
CHAMFER ALL EXPOSED CORNERS 1".
DRAWING NOT TO SCALE.

STATE OF NORTH CAROLINA
DEPT. OF TRANSPORTATION
RALEIGH, N.C.

ENGLISH STANDARD DRAWING FOR
CONCRETE GRATED DROP INLET TYPE 'A'
12" THRU 72" PIPE

SHEET 2 OF 2
840.17

QUANTITY TO BE ADDED FOR EACH 2' INCREMENT INLET OPENING

ADDITIONAL INLETS	2'-0"	4'-0"	6'-0"	8'-0"	10'-0"	12'-0"
CONCRETE CU. YDS.	0.181	0.417	0.655	0.897	1.145	1.393
CONCRETE APRON CU. YDS.	0.074	0.145	0.222	0.298	0.370	0.441

STATE OF NORTH CAROLINA
DEPT. OF TRANSPORTATION
RALEIGH, N.C.

ENGLISH STANDARD DRAWING FOR
CONCRETE GRATED DROP INLET TYPE 'A'
12" THRU 72" PIPE

SHEET 2 OF 2
840.17

QUANTITY TO BE ADDED FOR EACH 2' INCREMENT INLET OPENING

ADDITIONAL INLETS	2'-0"	4'-0"	6'-0"	8'-0"	10'-0"	12'-0"
CONCRETE CU. YDS.	0.181	0.417	0.655	0.897	1.145	1.393
CONCRETE APRON CU. YDS.	0.074	0.145	0.222	0.298	0.370	0.441

STATE OF NORTH CAROLINA
DEPT. OF TRANSPORTATION
RALEIGH, N.C.

ENGLISH STANDARD DRAWING FOR
FRAMES AND NARROW SLOT FLAT GRATES
12" THRU 72" PIPE

SHEET 1 OF 1
840.29

NOTE:
SEE STD. DWG. 840.25 FOR FRAME ANCHORAGE.

STATE OF NORTH CAROLINA
DEPT. OF TRANSPORTATION
RALEIGH, N.C.

ENGLISH STANDARD DRAWING FOR
BRICK GRATED DROP INLET TYPE 'A'
12" THRU 72" PIPE

SHEET 1 OF 2
840.26

GENERAL NOTES:
USE CLASS "B" CONCRETE THROUGHOUT.
JUNDO BRICK WILL BE PERMITTED. CONCRETE BRICK OR 4" SOLID CONCRETE BLOCK MAY BE USED IN LIEU OF CLAY BRICKS.
PROVIDE ALL DROP INLETS OVER 3'-6" IN DEPTH WITH STEPS 12" ON CENTER. USE STEPS WHICH COMPLY WITH STD. DRAWING 840.06.
USE #4 BAR DOWELS AT 12" CENTERS.
USE FORMS FOR THE CONSTRUCTION OF THE BOTTOM SLAB.
IF REINFORCED CONCRETE PIPE IS SET IN BOTTOM SLAB OF BOX, ADD TO SLAB AND SHOW ON STD. DWG. 840.06.
CONSTRUCT WITH PIPE JOINTS MATCHING.
MAX. DEPTH OF THIS STRUCTURE FROM TOP OF BOTTOM SLAB TO TOP ELEVATION IS 12 FEET.
USE STANDARD FRAMES AND GRATES 840.22 (SHOW), 840.24(SHOW), 840.20, 840.28, AND 840.33.
SEE STANDARD DRAWING 840.25 FOR ATTACHMENT OF FRAMES AND GRATES NOT SHOWN.
CHAMFER ALL EXPOSED CORNERS 1".
DRAWING NOT TO SCALE.

STATE OF NORTH CAROLINA
DEPT. OF TRANSPORTATION
RALEIGH, N.C.

ENGLISH STANDARD DRAWING FOR
BRICK GRATED DROP INLET TYPE 'A'
12" THRU 72" PIPE

SHEET 1 OF 2
840.26

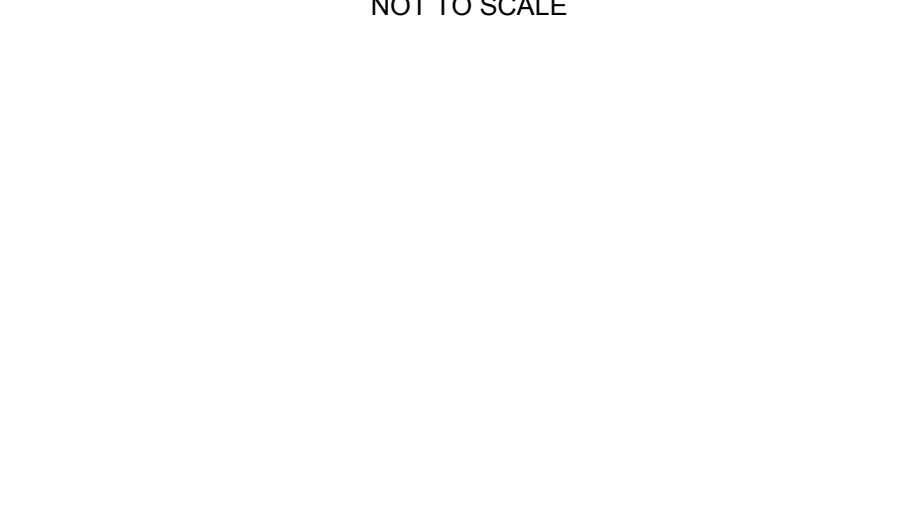
GENERAL NOTES:
USE CLASS "B" CONCRETE THROUGHOUT.
JUNDO BRICK WILL BE PERMITTED. CONCRETE BRICK OR 4" SOLID CONCRETE BLOCK MAY BE USED IN LIEU OF CLAY BRICKS.
PROVIDE ALL DROP INLETS OVER 3'-6" IN DEPTH WITH STEPS 12" ON CENTER. USE STEPS WHICH COMPLY WITH STD. DRAWING 840.06.
USE #4 BAR DOWELS AT 12" CENTERS.
USE FORMS FOR THE CONSTRUCTION OF THE BOTTOM SLAB.
IF REINFORCED CONCRETE PIPE IS SET IN BOTTOM SLAB OF BOX, ADD TO SLAB AND SHOW ON STD. DWG. 840.06.
CONSTRUCT WITH PIPE JOINTS MATCHING.
MAX. DEPTH OF THIS STRUCTURE FROM TOP OF BOTTOM SLAB TO TOP ELEVATION IS 12 FEET.
USE STANDARD FRAMES AND GRATES 840.22 (SHOW), 840.24(SHOW), 840.20, 840.28, AND 840.33.
SEE STANDARD DRAWING 840.25 FOR ATTACHMENT OF FRAMES AND GRATES NOT SHOWN.
CHAMFER ALL EXPOSED CORNERS 1".
DRAWING NOT TO SCALE.

OUTLET PROTECTION FOR DEFINED CHANNEL
NOT TO SCALE



- NOTES:
- TRENCHES REQUIRING SHORING AND BRACING. DIMENSIONS SHALL BE TAKEN FROM THE INSIDE FACE OF THE SHORING AND BRACING.
 - NO ROCKS OR BOULDERS 4" OR LARGER TO BE USED IN INITIAL BACKFILL.
 - ALL BACKFILL MATERIAL SHALL BE SUITABLE NATIVE MATERIAL.
 - BACKFILL SHALL BE TAMPED IN 6" LAYERS IN TRAFFIC AREAS. 12" IN NON TRAFFIC AREAS.

TRENCH BOTTOM DIMENSIONS & BACKFILLING REQUIREMENTS FOR D.I.P., V.C.P., & R.C.P.
NOT TO SCALE



CE GROUP
301 GLENWOOD AVE. 220
RALEIGH, NC 27603
PHONE: 919-367-8790
FAX: 919-322-0032
www.cegroupinc.com
License # C-1739

NORTH CAROLINA
STATE SEAL
18884
REGISTERED PROFESSIONAL ENGINEER

**STONECREST AT NORWOOD SUBDIVISION
CONSTRUCTION DRAWINGS
STORM DETAILS**

CHATHAM COUNTY, NC

Date:	May 2017
Scale:	N/A
Drawn:	JPD
Checked:	MFA
Project No.:	127-209
Computer Dwg. Name:	127-209 storm details
Sheet No.:	

STOP!
BEFORE YOU DIG CALL
THE NC ONE CALL CENTER
1-800-632-4949
IT'S THE LAW!

FINAL DESIGN
NOT RELEASED
FOR CONSTRUCTION