

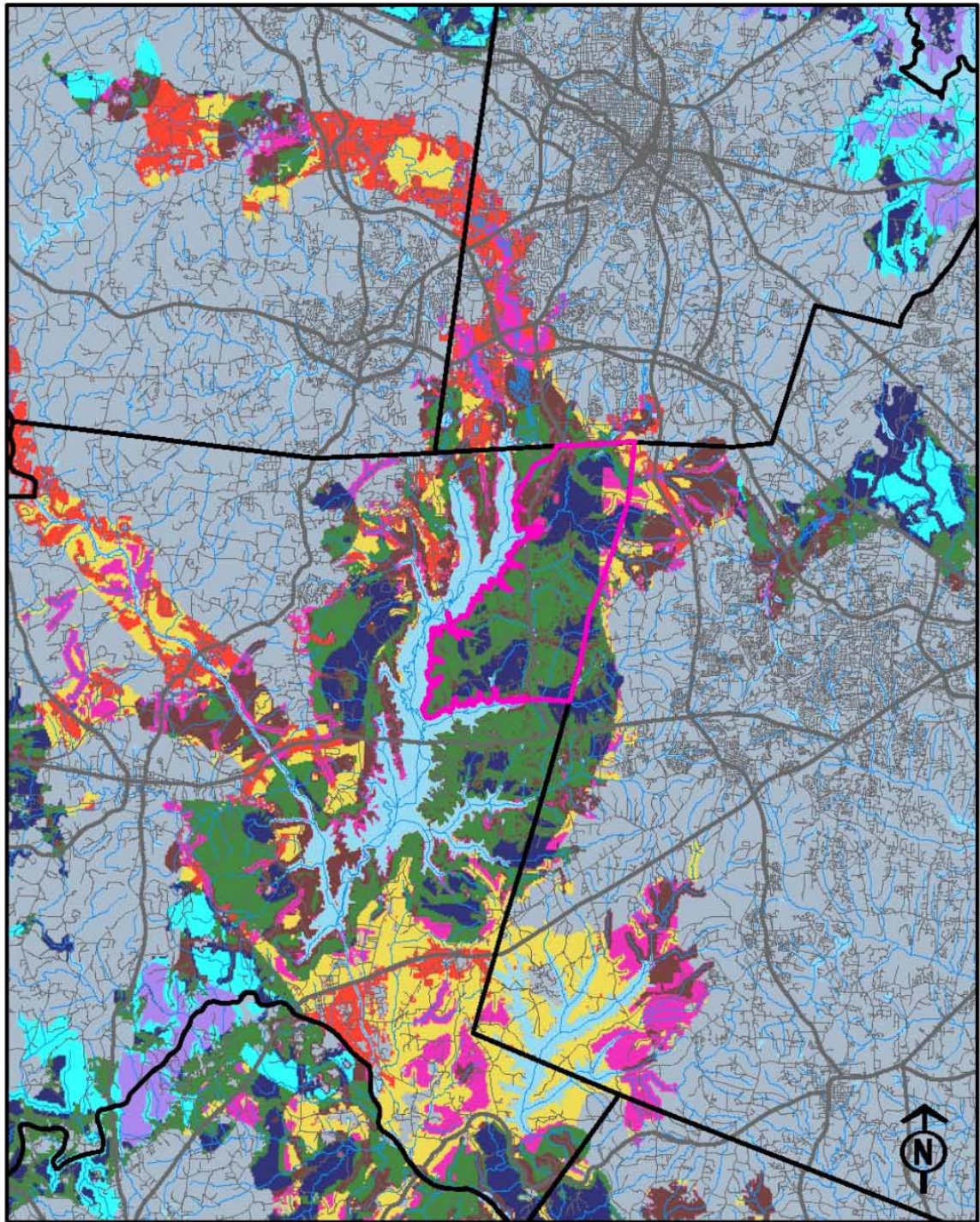


Chatham-Cary JLUP Conservation Opportunities



Jacquelyn Presley
Urban Wildlife Biologist
NCWRC

EPA SE Ecological Framework Biodiversity Levels: Chatham-Cary JLUP Study Area

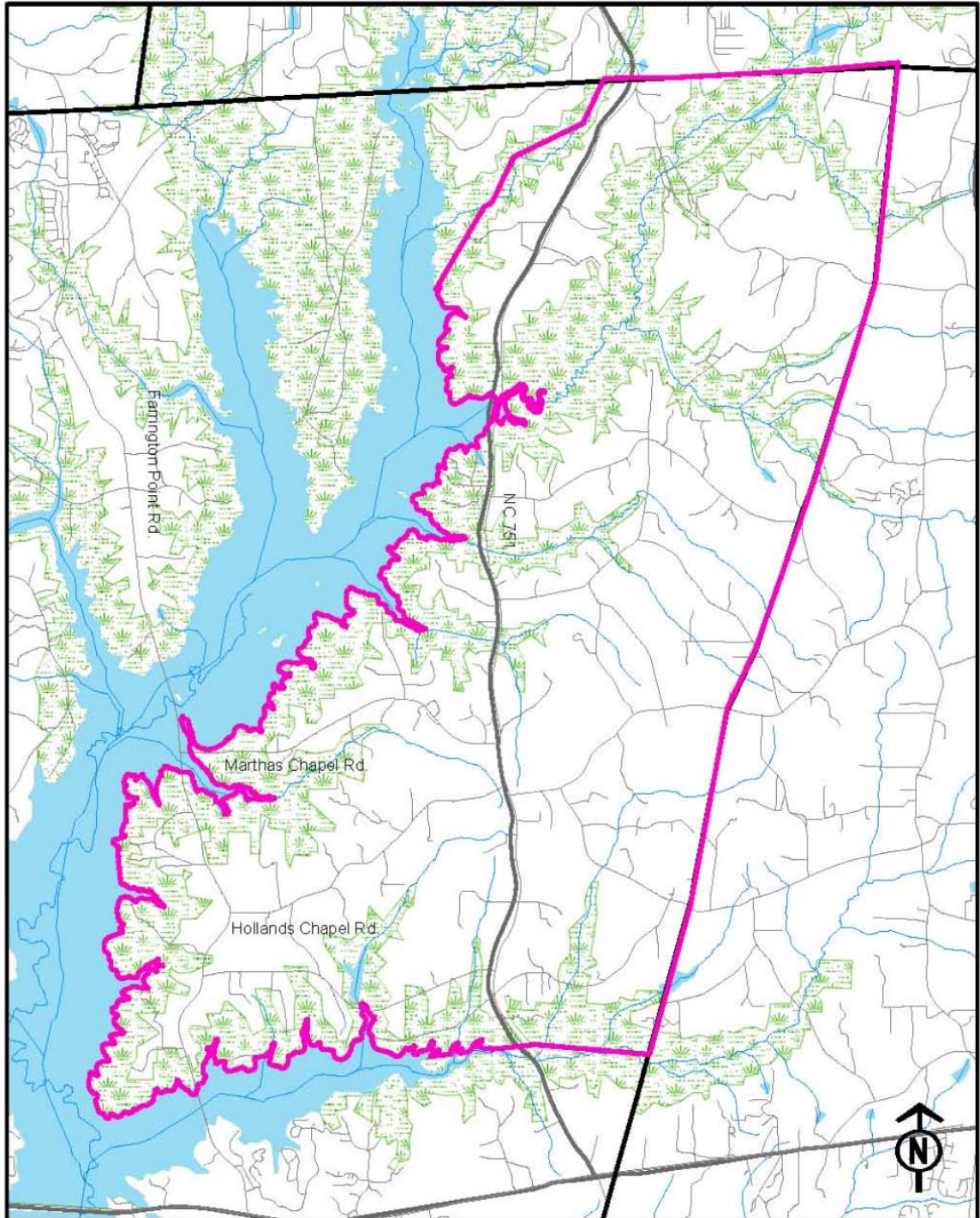


Chatham-Cary JLUP Study Area

- 0
- 1
- 2
- 3
- 4
- 5
- 6
- 7
- 8
- 9
- 10

0 2.5 5 10 Miles

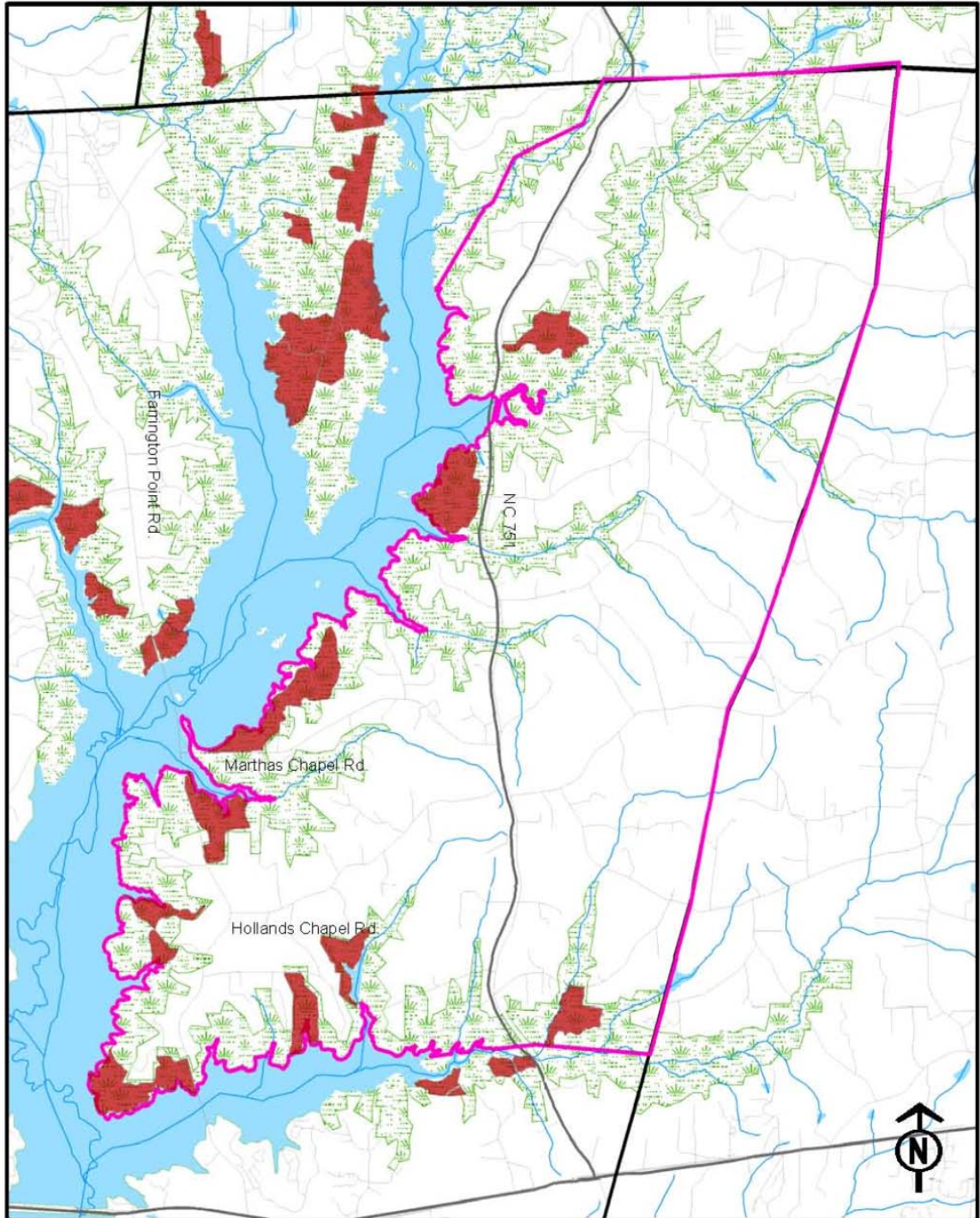
NCWRC Encroachment Recommendations Chatham-Cary JLUP Study Area



 Chatham-Cary JLUP Study Area
 2006 WRC Gameland



NCWRC Encroachment Recommendations Chatham-Cary JLUP Study Area

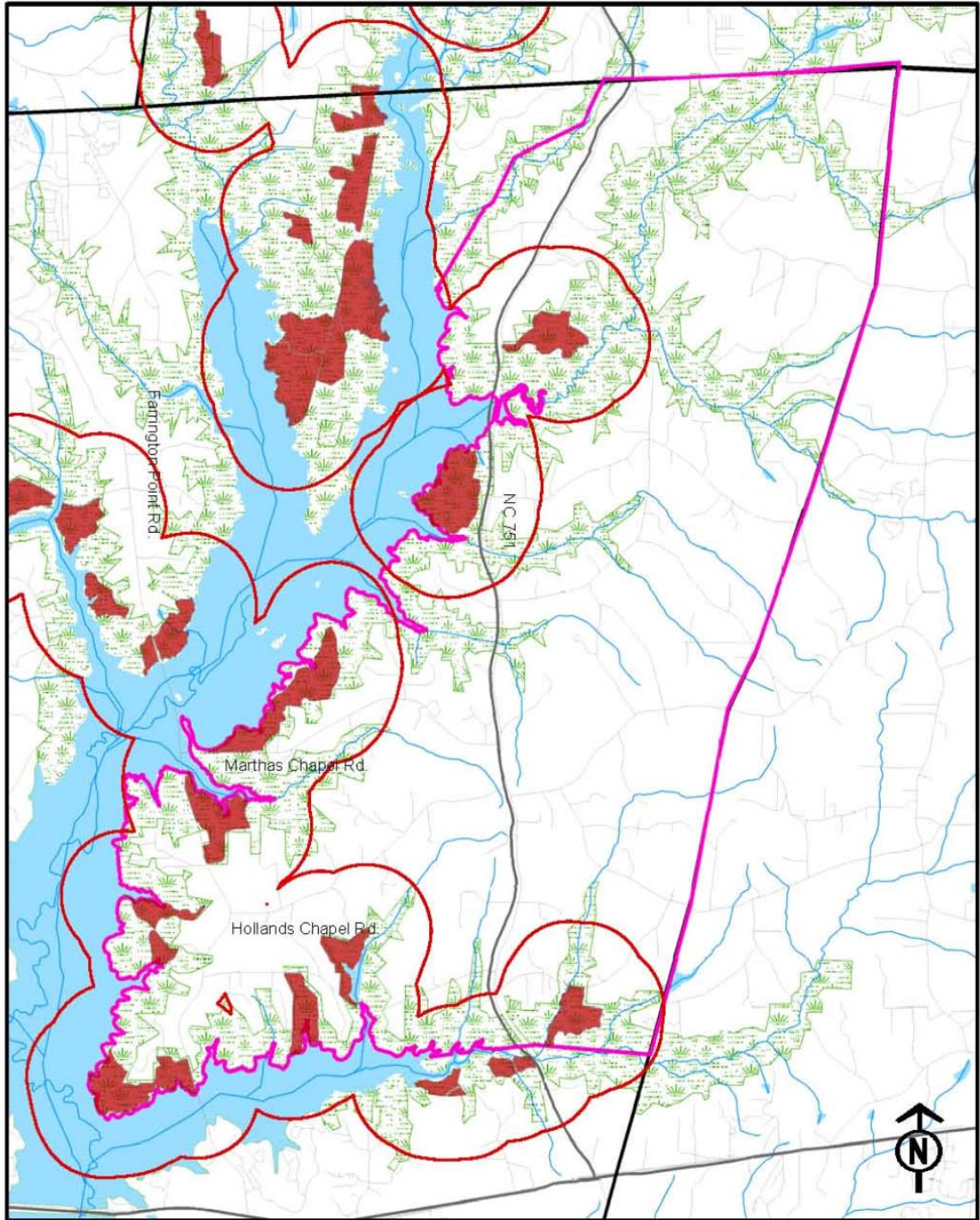




-  Chatham-Cary JLUP Study Area
-  2006 WRC Gameland
-  Jordan Gameland Burn Blocks

0 0.5 1 2 Miles



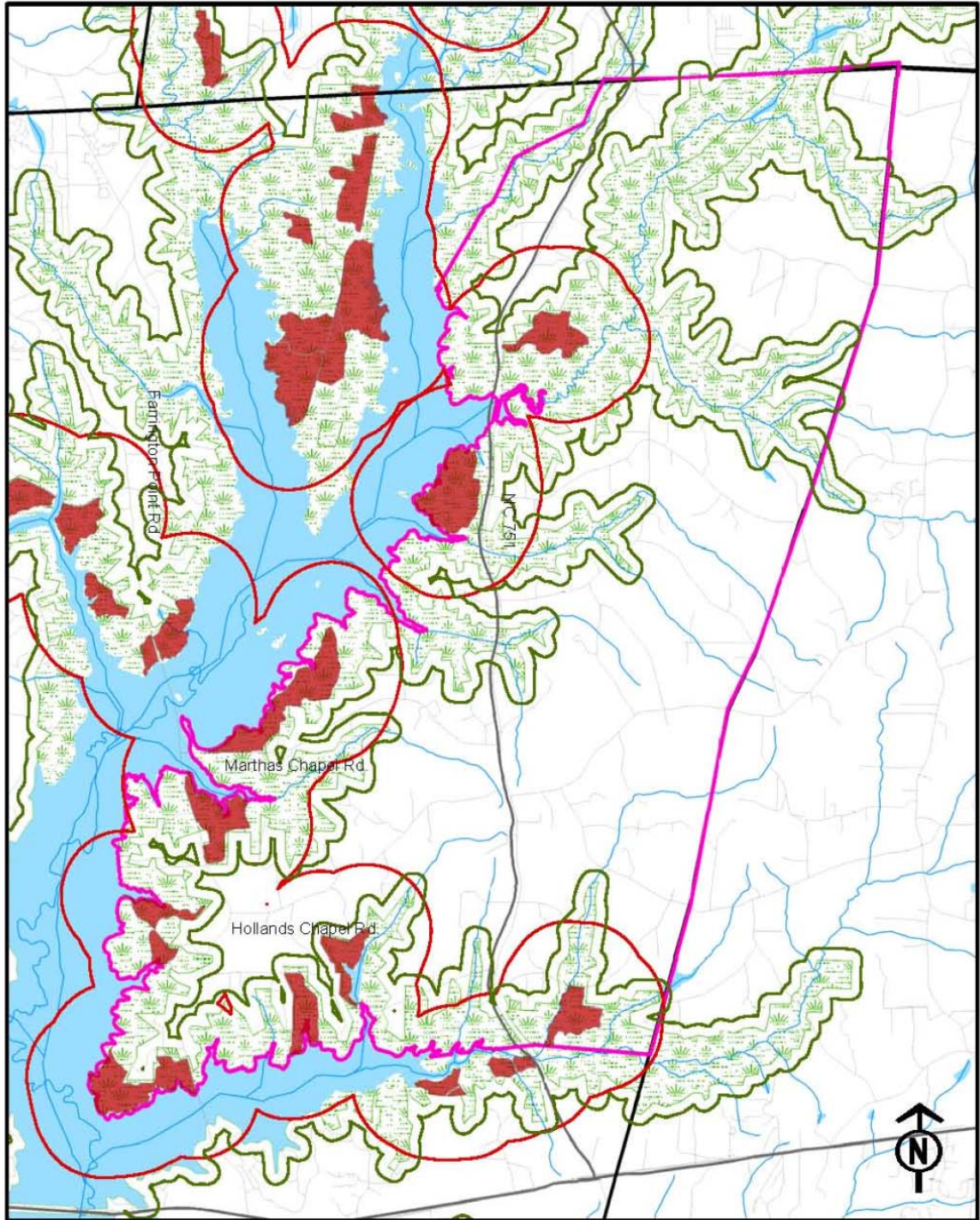
NCWRC Encroachment Recommendations Chatham-Cary JLUP Study Area



-  Chatham-Cary JLUP Study Area
-  2006 WRC Gameland
-  Jordan Gameland Burn Blocks
-  1/2 Mile Smoke Buffer

0 0.5 1 2 Miles

NCWRC Encroachment Recommendations Chatham-Cary JLUP Study Area



-  Chatham-Cary JLUP Study Area
-  2006 WRC Gameland
-  Jordan Gameland Burn Blocks
-  1/2 Mile Smoke Buffer
-  Game Land Hunting Buffer

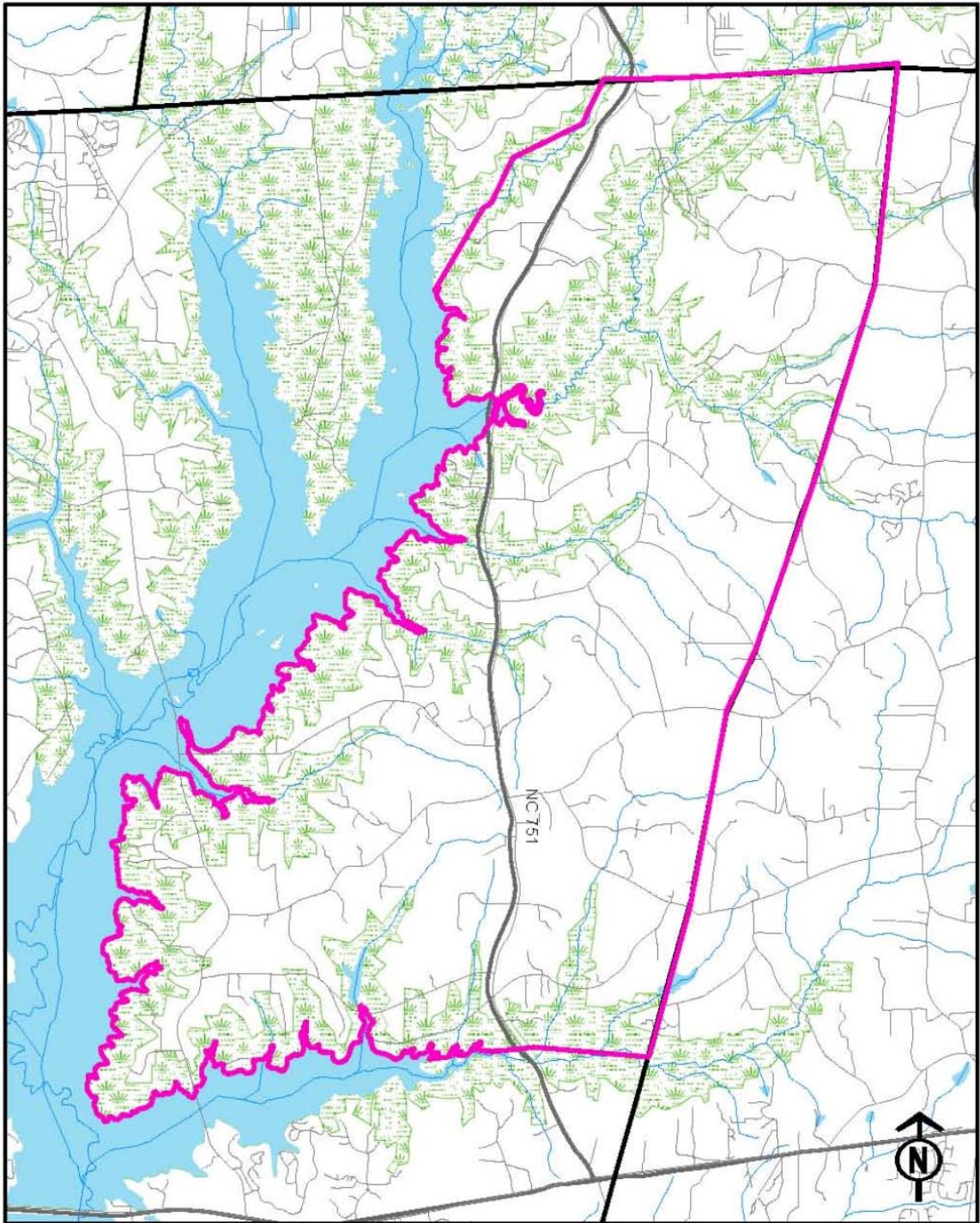
0 0.5 1 2 Miles



NCWRC Encroachment Recommendations

- ½ Mile Smoke Management Buffer around Jordan Game Land Burn Blocks
 - No major roads
 - No residential or commercial development
- 150 yard Hunting Safety Buffer around Game Land boundaries
 - No inhabited structures

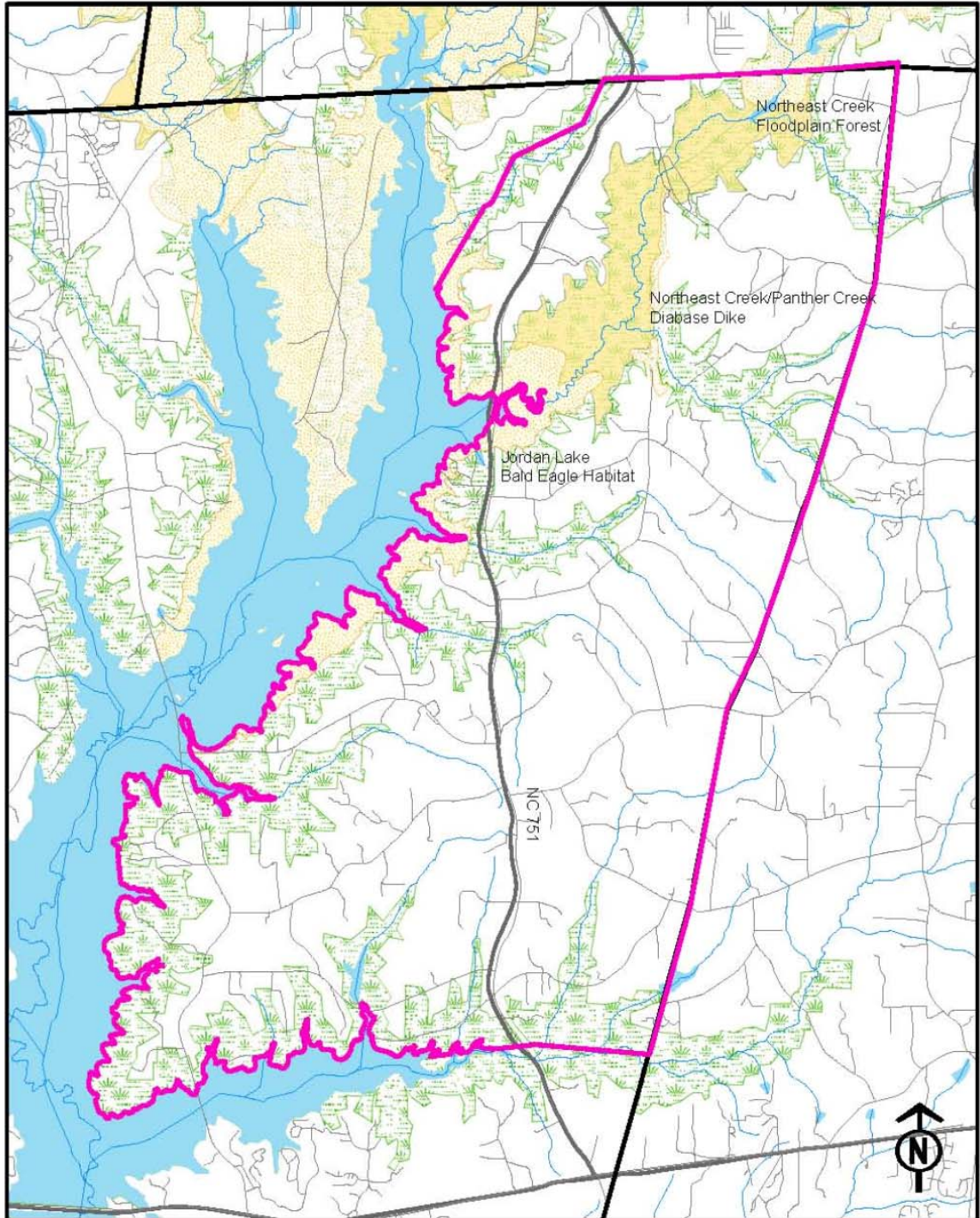
Conservation Opportunities: Chatham-Cary JLUP Study Area







-  Chatham-Cary JLUP Study Area
-  2006 WRC Gameland



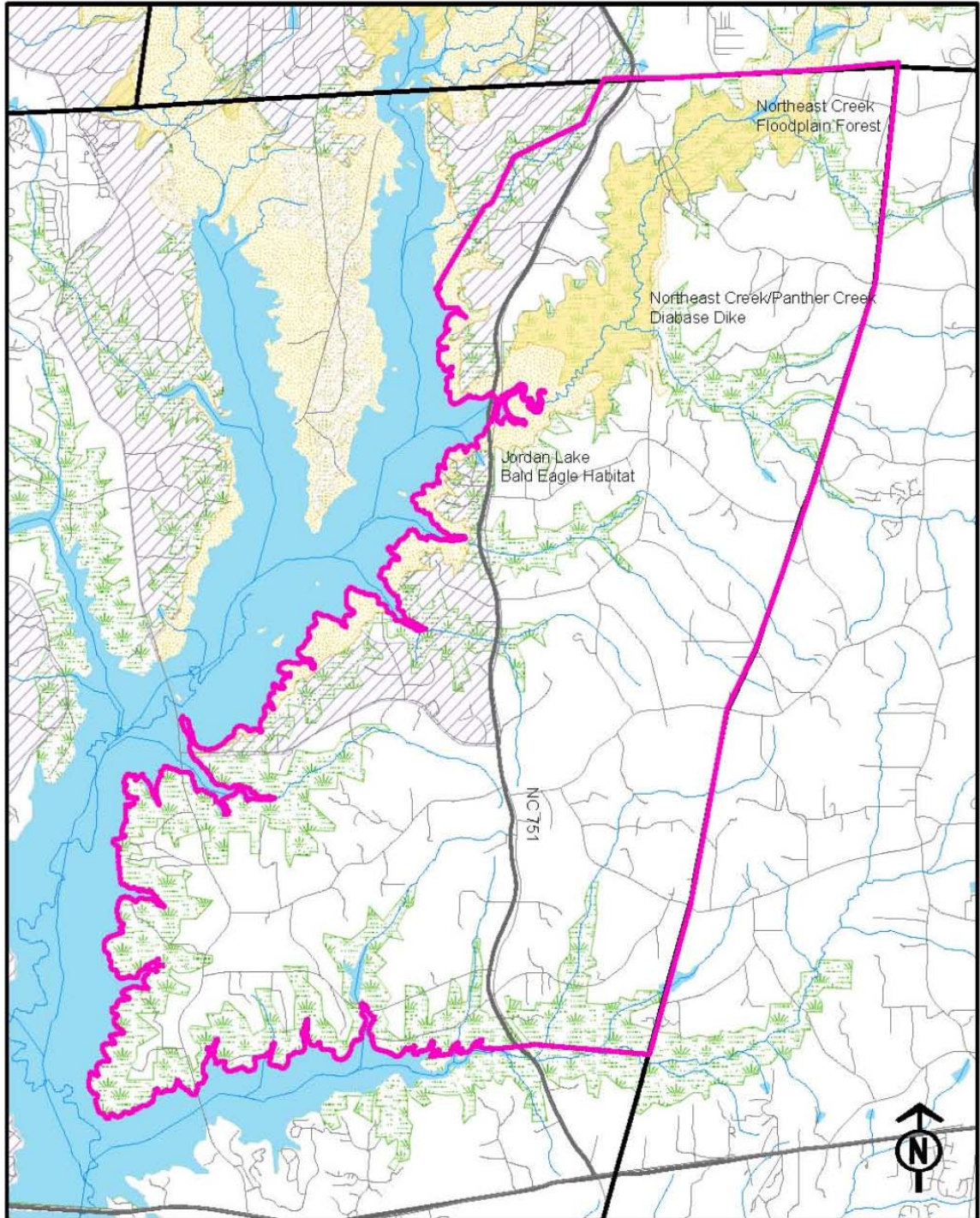
Conservation Opportunities: Chatham-Cary JLUP Study Area








-  Chatham-Cary JLUP Study Area
-  NHP Macrosite
-  2006 Natural Heritage Area
-  2006 WRC GameLand



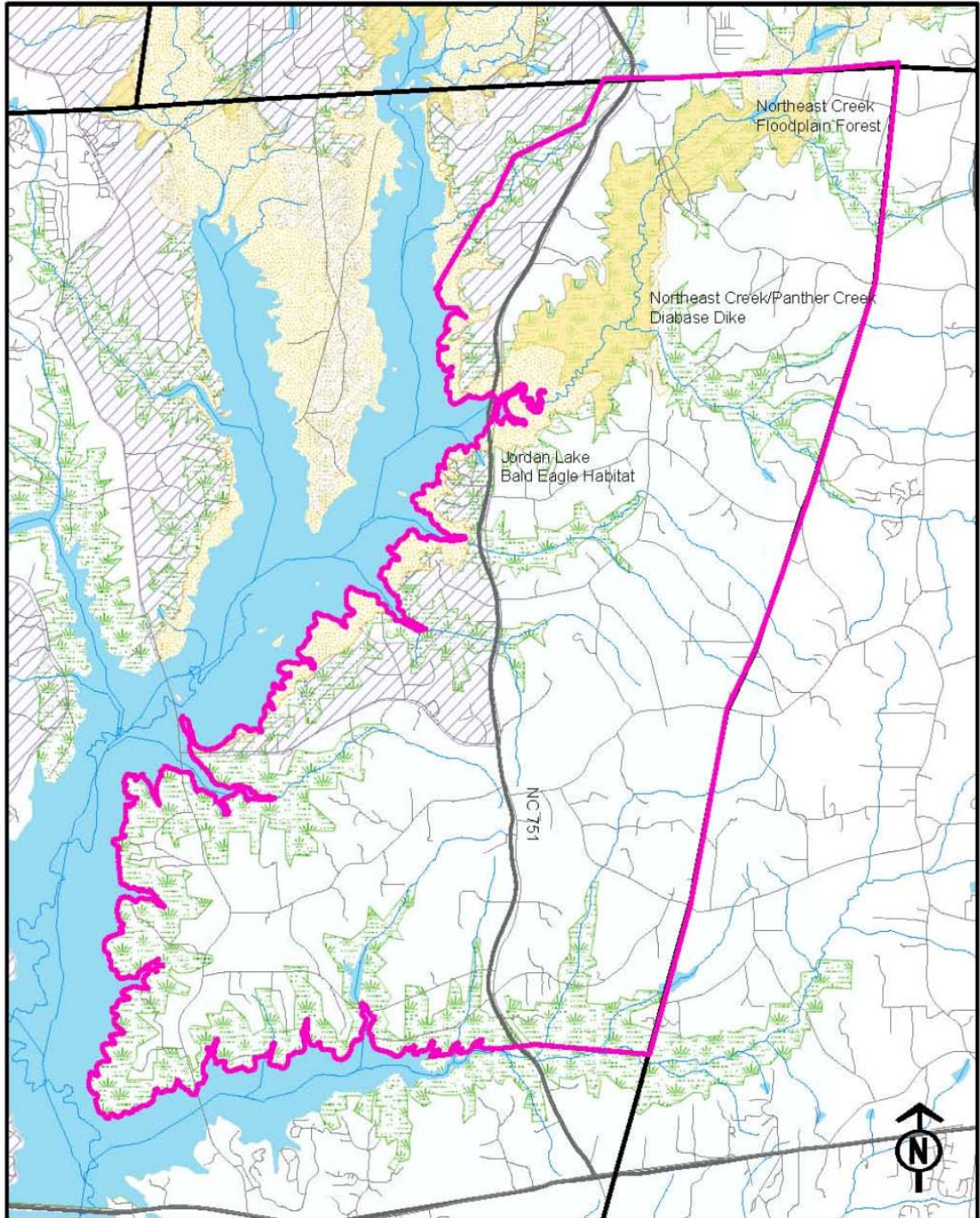
Conservation Opportunities: Chatham-Cary JLUP Study Area



-  Chatham-Cary JLUP Study Area
-  NHP Macrosite
-  2006 Natural Heritage Area
-  TNC Portfolio Site
-  2006 WRC Gameland



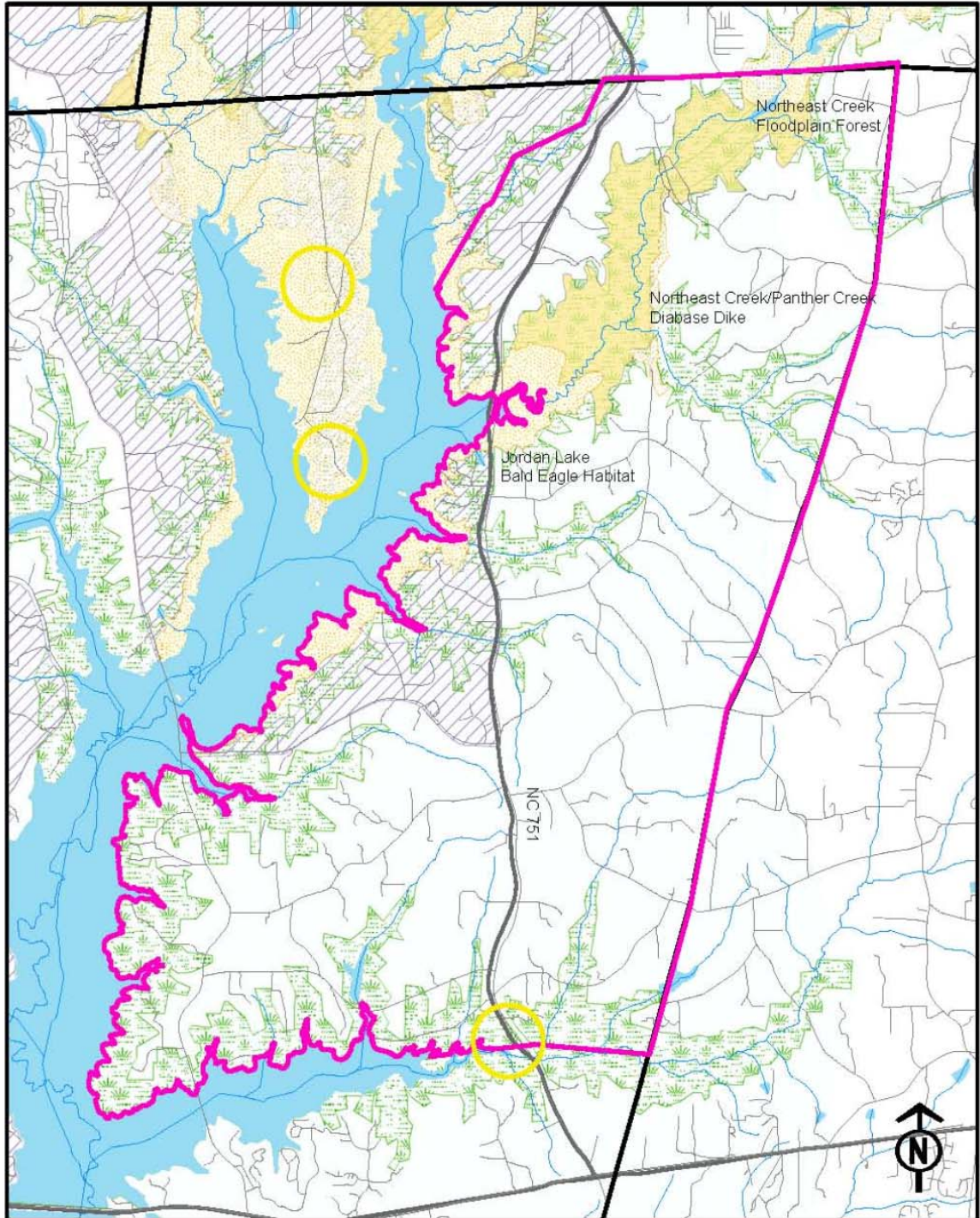
Conservation Opportunities: Chatham-Cary JLUP Study Area



- Chatham-Cary JLUP Study Area
- NHP Macrosite
- 2006 Natural Heritage Area
- TNC Portfolio Site
- 2006 WRC Gameland
- 2005 Important Bird Area



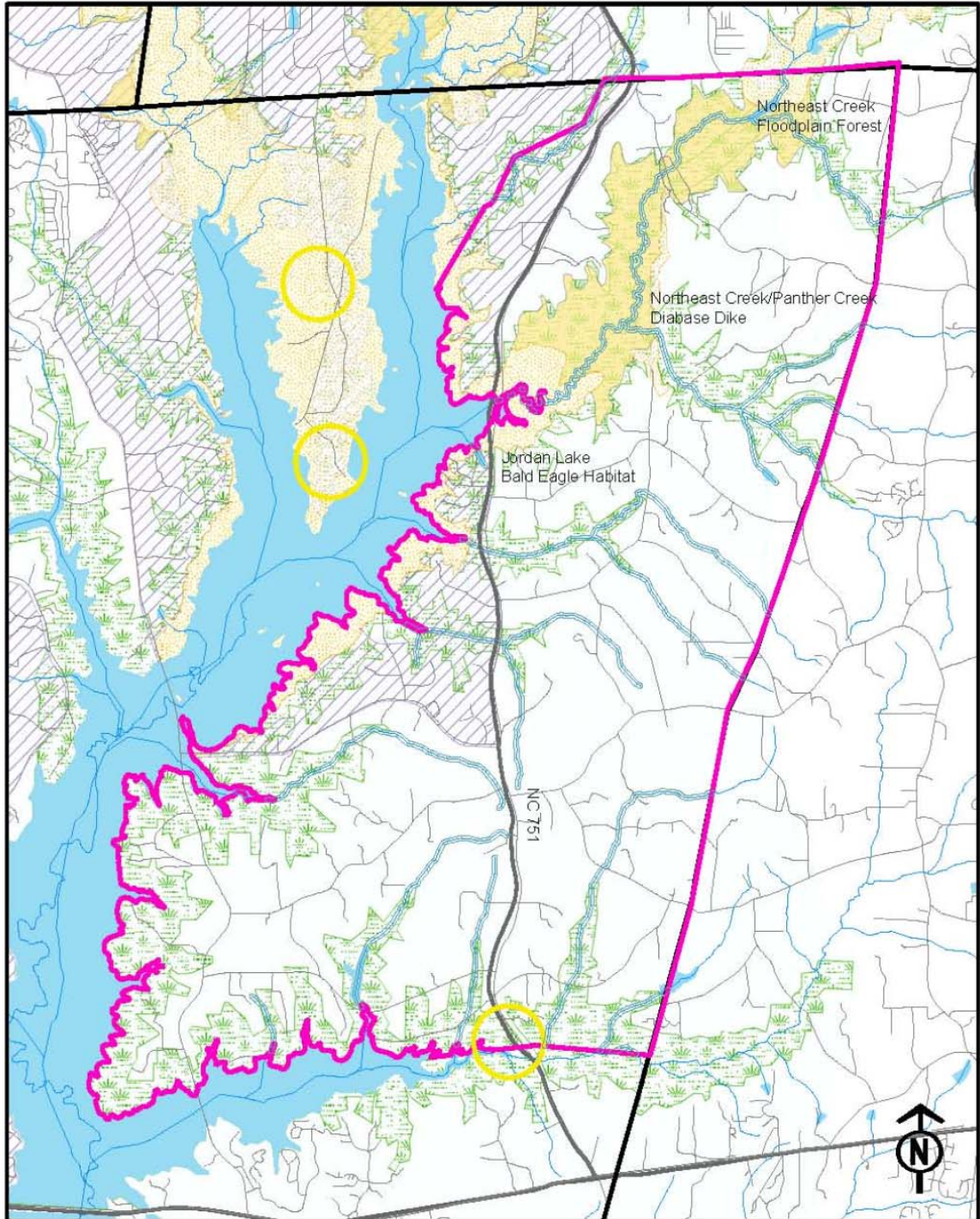
Conservation Opportunities: Chatham-Cary JLUP Study Area



- Chatham-Cary JLUP Study Area
- NHP Macrosite
- 2006 Natural Heritage Area
- TNC Portfolio Site
- 2006 WRC Gameland
- 2005 Important Bird Area
- Bald Eagle Critical Area



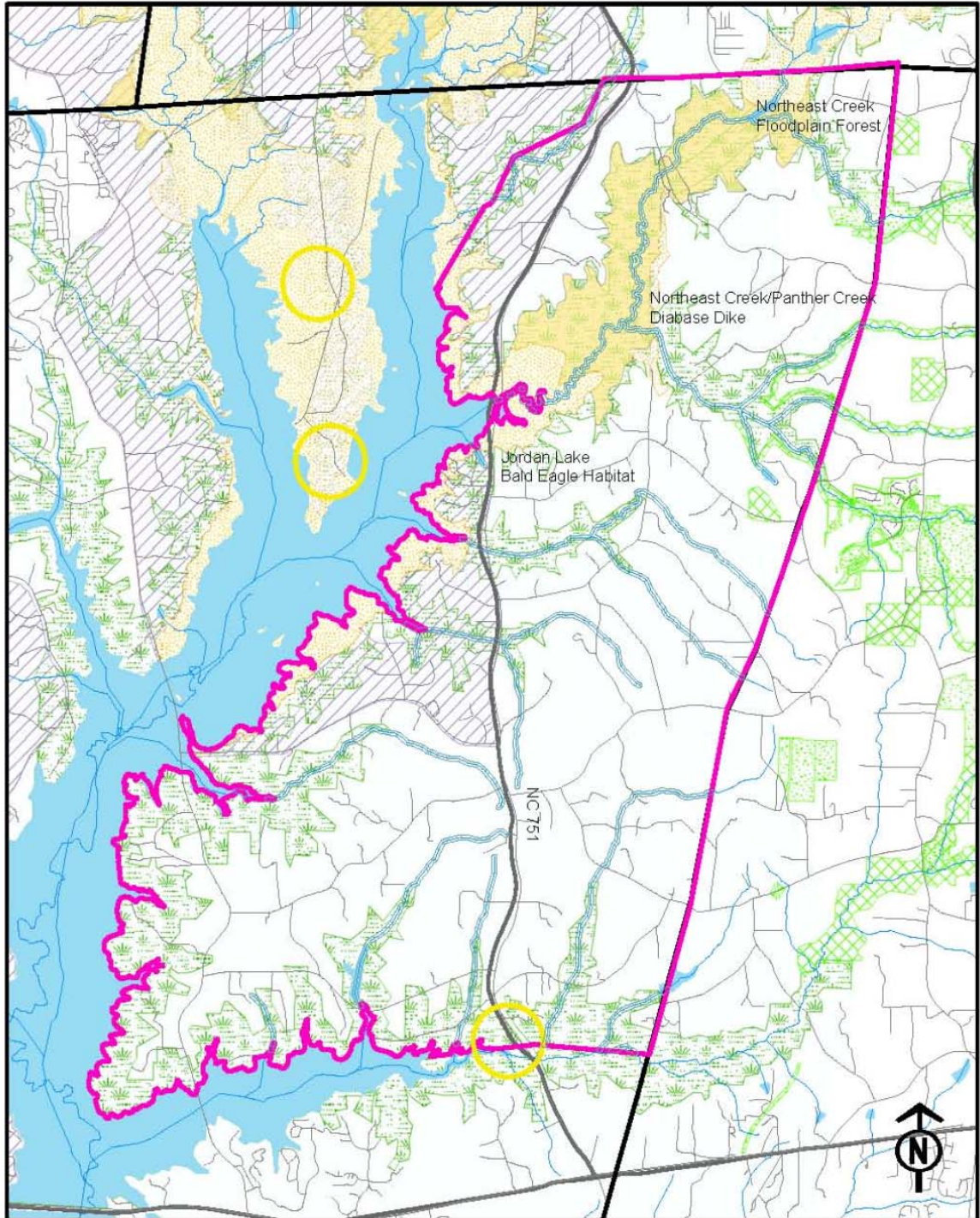
Conservation Opportunities: Chatham-Cary JLUP Study Area



-  Chatham-Cary JLUP Study Area
-  NHP Macrosite
-  2006 Natural Heritage Area
-  TNC Portfolio Site
-  2006 WRC Gameland
-  2005 Important Bird Area
-  Bald Eagle Critical Area
-  100 ft. Stream Buffers

0 0.5 1 2 Miles

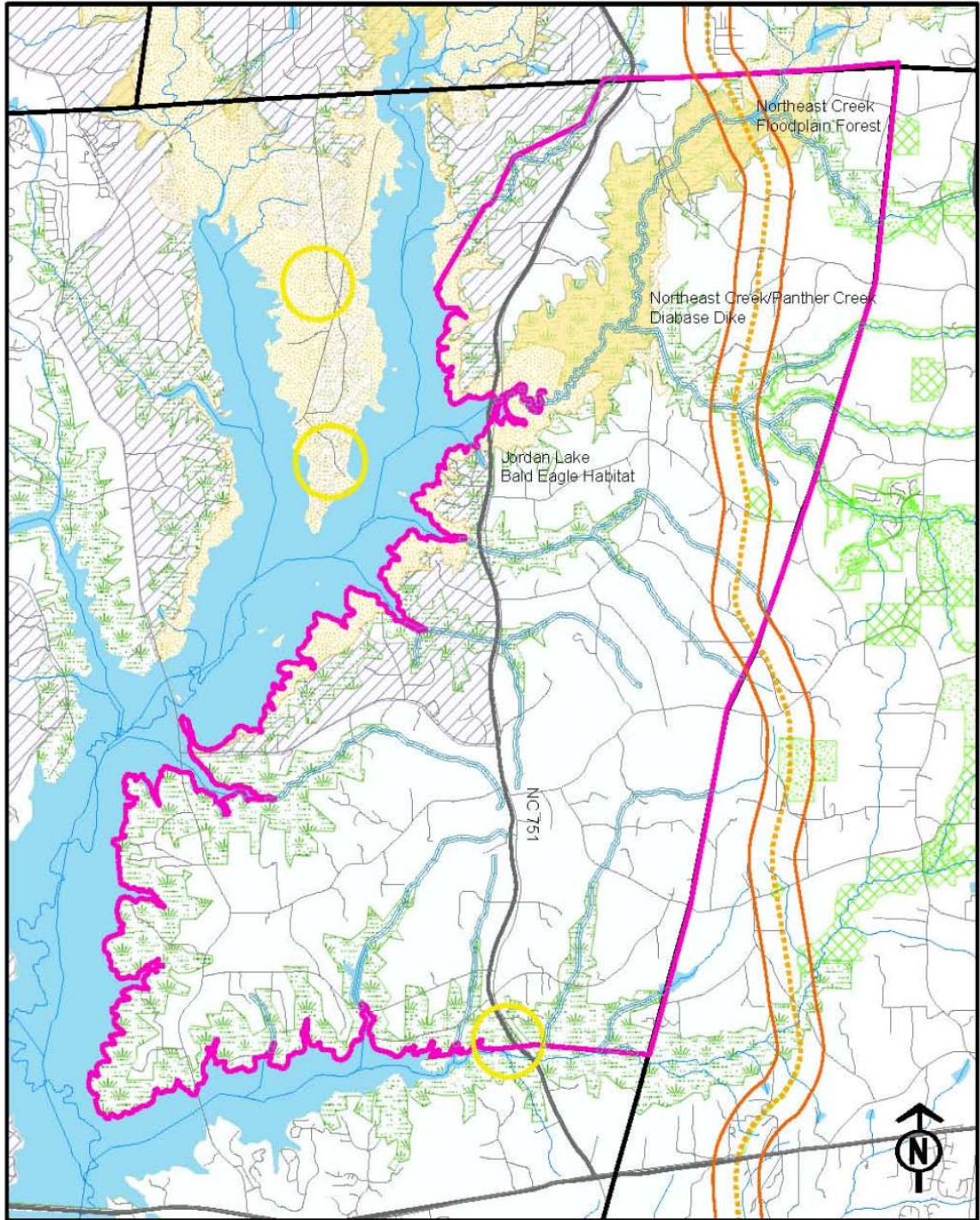
Conservation Opportunities: Chatham-Cary JLUP Study Area



- Chatham-Cary JLUP Study Area
- NHP Macrosite
- 2006 Natural Heritage Area
- TNC Portfolio Site
- 2006 WRC Gameland
- 2005 Important Bird Area
- Cary Proposed Open Space
- Bald Eagle Critical Area
- 100 ft. Stream Buffers

0 0.5 1 2 Miles

Conservation Opportunities: Chatham-Cary JLUP Study Area



- Chatham-Cary JLUP Study Area
- NHP Macrosite
- 2006 Natural Heritage Area
- TNC Portfolio Site
- 2006 WRC Gameland
- 2005 Important Bird Area
- American Tobacco Trail
- 300 meter ATT Buffer
- Bald Eagle Critical Area
- 100 ft. Stream Buffers



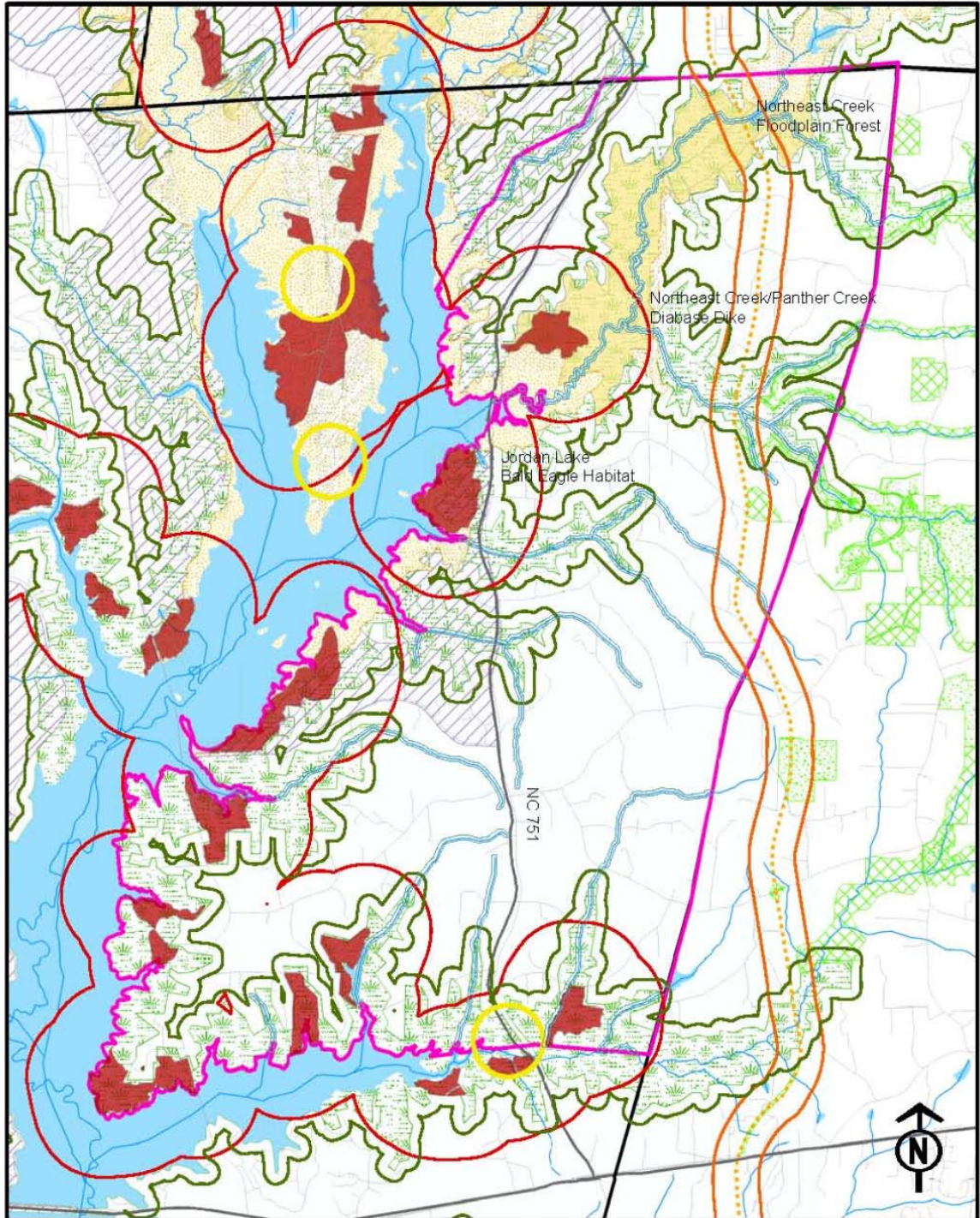
Habitat Protection Recommendations

- Zone Natural Heritage & TNC Sites for very low residential density (1 du/10 acres) or working lands
- Protect 100 foot stream buffers around perennial streams
- Protect a connected network of open space via parkland acquisition
 - 300 meter wildlife corridor around American Tobacco Trail
 - Other properties that create a connected open space network

Habitat Protection Recommendations

- Enable residential “zoning extremes”
 - 1 du/0.5 acre
 - 1 du/5 acres
- Encourage conservation subdivision design
- Require “native, forested” buffers

Conservation Opportunities: Chatham-Cary JLUP Study Area



- | | |
|------------------------------|-----------------------------|
| Chatham-Cary JLUP Study Area | American Tobacco Trail |
| NHP Macrosite | Jordan Gameland Burn Blocks |
| 2006 Natural Heritage Area | Cary Proposed Open Space |
| TNC Portfolio Site | 1/2 Mile Smoke Buffer |
| 2006 WRC Gameland | 300 meter ATT Buffer |
| 2005 Important Bird Area | 150 yard Hunting Buffer |
| | Bald Eagle Critical Area |
| | 100 ft. Stream Buffers |

