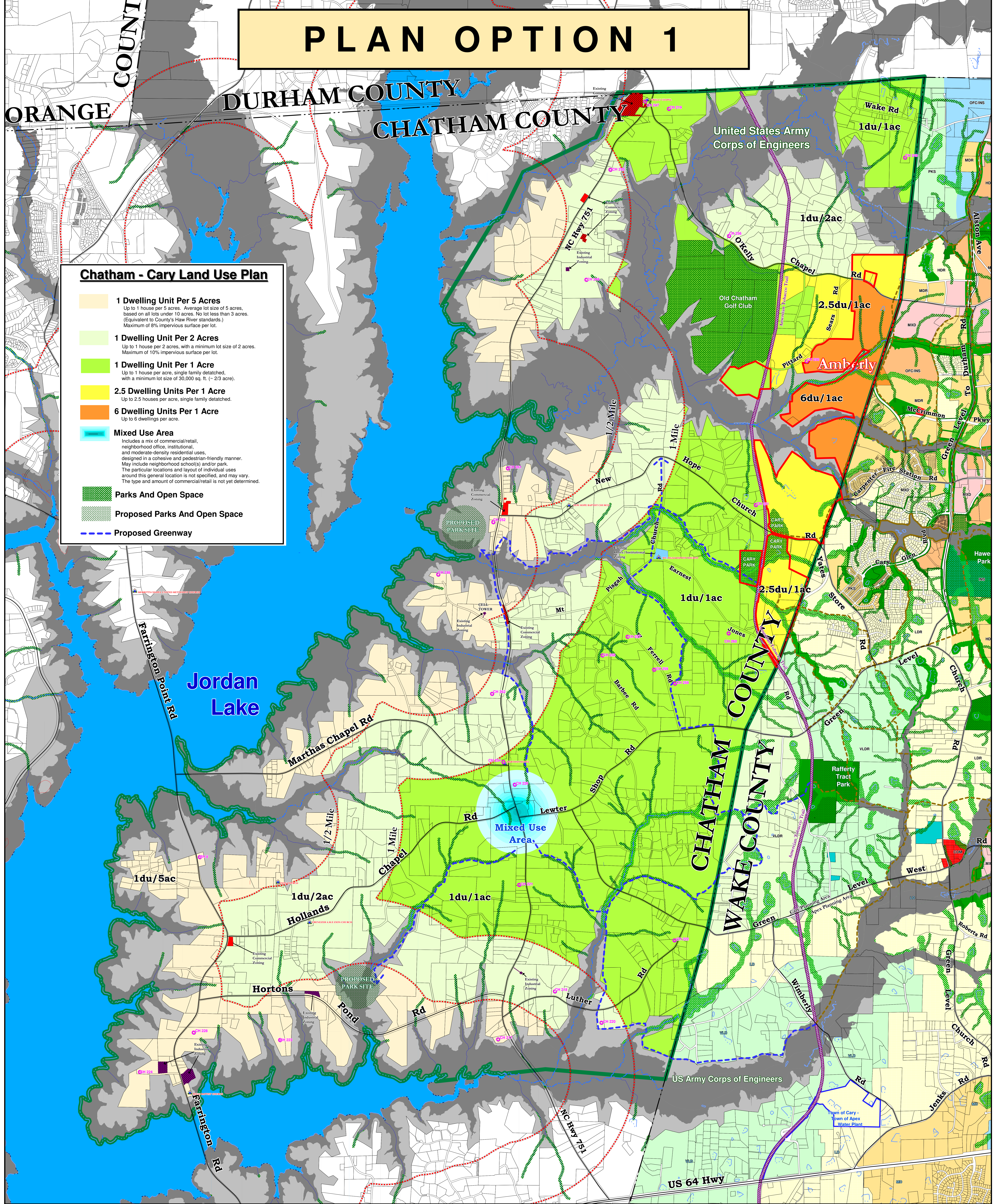


PLAN OPTION 1



Chatham - Cary Land Use Plan

- 1 Dwelling Unit Per 5 Acres**
Up to 1 house per 5 acres. Average lot size of 5 acres, based on all lots under 10 acres. No lot less than 3 acres. (Equivalent to County's Haw River standards.) Maximum of 8% impervious surface per lot.
- 1 Dwelling Unit Per 2 Acres**
Up to 1 house per 2 acres, with a minimum lot size of 2 acres. Maximum of 10% impervious surface per lot.
- 1 Dwelling Unit Per 1 Acre**
Up to 1 house per acre, single family detached, with a minimum lot size of 30,000 sq. ft. (~ 2/3 acre).
- 2.5 Dwelling Units Per 1 Acre**
Up to 2.5 houses per acre, single family detached.
- 6 Dwelling Units Per 1 Acre**
Up to 6 dwellings per acre.
- Mixed Use Area**
Includes a mix of commercial/retail, neighborhood office, institutional, and moderate-density residential uses, designed in a cohesive and pedestrian-friendly manner. May include neighborhood school(s) and/or park. The particular locations and layout of individual uses around this general location is not specified, and may vary. The type and amount of commercial/retail is not yet determined.
- Parks And Open Space**
- Proposed Parks And Open Space**
- Proposed Greenway**

Plan Option No. 1
Chatham County
&
TOWN of CARY
Joint Comprehensive Plan Study

Site No.	Site Name	Site No.	Site Name
CH 217	David Johnson Farm	CH 250	John D. Horton Farm
CH 218	Phyllis Hilliard House	CH 251	William Maccom Farm
CH 219	Francis-Elle House	CH 252	Markham Stone
CH 220	Building Horton House	CH 254	Martha's Chapel Christian Church
CH 221	Thomas Yates Academy School	CH 255	Langston Henderson House
CH 222	House (SR 1743)	CH 256	Henry B. Barber Complex
CH 223	Star Cluster Farm	CH 257	Jimmy Yates Farm Complex
CH 224	Francis Barnes, Sr. House	CH 258	Toy Wilson Farm Complex
CH 225	Hollis & Adick Kelly House	CH 259	Panholster Farm Complex (Main House)
CH 226	Toy Horton House	CH 259	Panholster Farm Complex (Tenant House)
CH 246	Log House (SR 1740)	CH 260	Markham Forest Farm
CH 247	OKelly's Chapel Christian Church	CH 261	Halle Council House
CH 248	Baker House	CH 262	John Council House
CH 249	Black & Myrtle High House	CH 263	Joseph B. Stone House

Key To Cary & Apex Land Use Plans

- Core In Wake County
- High Density Residential
- Institutional
- Low Density Residential
- Medium Density Residential
- Mixed Density
- Office/Institutional
- Parks
- Very Low Density Residential
- Existing - Cary Greenways
- Proposed - Cary Greenways

US Army COE Property
1/2 Mile & 1 Mile Boundary From Jordan Lake Normal Pool Elevation
Joint Planning Area Boundary
Cary Corporate Limits In Chatham Co.
NC Historic Inventory Site
Church

Stream Buffers
100 Feet
50 Feet
100 Year Flood Plain
American Tobacco Trail

Chatham County
TOWN of CARY

Scale: 1" = 1200'
October, 2006