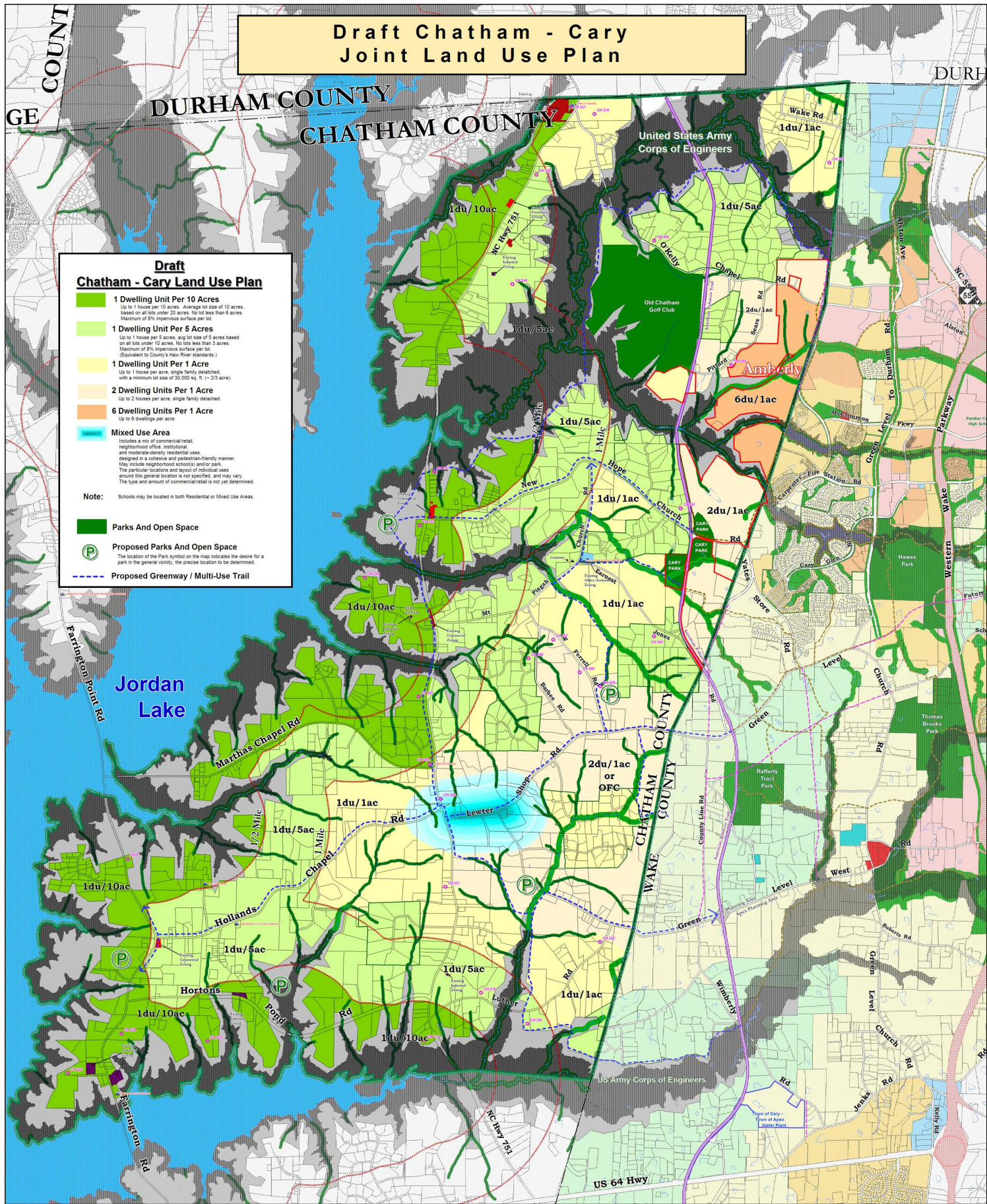


Draft Chatham - Cary Joint Land Use Plan



Draft Chatham - Cary Land Use Plan

- 1 Dwelling Unit Per 10 Acres**
Up to 1 house per 10 acres. Average lot size of 10 acres, based on all lots under 20 acres. No lots less than 6 acres. Maximum of 2% impervious surface per lot.
- 1 Dwelling Unit Per 5 Acres**
Up to 1 house per 5 acres, avg lot size of 5 acres based on all lots under 10 acres. No lots less than 3 acres. Maximum of 2% impervious surface per lot. (Equivalent to County's Haze River standards.)
- 1 Dwelling Unit Per 1 Acre**
Up to 1 house per acre, single family detached, with a minimum lot size of 30,000 sq. ft. (~2.3 acre).
- 2 Dwelling Units Per 1 Acre**
Up to 2 houses per acre, single family detached.
- 6 Dwelling Units Per 1 Acre**
Up to 6 dwellings per acre.
- Mixed Use Area**
Includes a mix of commercial, retail, neighborhood office, institutional and moderate-density residential uses, designed in a cohesive and pedestrian-friendly manner. May include neighborhood schools and/or parks. The particular locations and layout of individual uses around the general location is not specified, and may vary. The type and amount of commercial/retail is not yet determined.
- Note:** Schools may be located in both Residential or Mixed Use Areas.
- Parks And Open Space**
- Proposed Parks And Open Space**
The location of the Park symbol on the map indicates the desire for a park in the general vicinity, the precise location to be determined.
- Proposed Greenway / Multi-Use Trail**

Draft Plan
Chatham County
TOWN of CARY
Joint Comprehensive Plan Study

- US Army COE Property
- 1/2 Mile & 1 Mile Boundary From Jordan Lake Normal Pool Elevation
- Joint Planning Area Boundary
- Cary Corporate Limits In Chatham Co.
- NC Historic Inventory Site
- Church
- Proposed Future Roads
- 100 Year Flood Plain
- American Tobacco Trail



Key To NC Historic Inventory Sites

Site No.	Site Name	Site No.	Site Name
020-217	General John's Farm	020-220	John's House Farm
020-218	Proctor's Farm	020-221	Marshall House
020-219	Patrick's House	020-222	Marshall House
020-220	Proctor's Farm	020-223	Marshall House
020-221	Proctor's Farm	020-224	Marshall House
020-222	Proctor's Farm	020-225	Marshall House
020-223	Proctor's Farm	020-226	Marshall House
020-224	Proctor's Farm	020-227	Marshall House
020-225	Proctor's Farm	020-228	Marshall House
020-226	Proctor's Farm	020-229	Marshall House
020-227	Proctor's Farm	020-230	Marshall House
020-228	Proctor's Farm	020-231	Marshall House
020-229	Proctor's Farm	020-232	Marshall House
020-230	Proctor's Farm	020-233	Marshall House
020-231	Proctor's Farm	020-234	Marshall House
020-232	Proctor's Farm	020-235	Marshall House
020-233	Proctor's Farm	020-236	Marshall House
020-234	Proctor's Farm	020-237	Marshall House
020-235	Proctor's Farm	020-238	Marshall House
020-236	Proctor's Farm	020-239	Marshall House
020-237	Proctor's Farm	020-240	Marshall House
020-238	Proctor's Farm	020-241	Marshall House
020-239	Proctor's Farm	020-242	Marshall House
020-240	Proctor's Farm	020-243	Marshall House
020-241	Proctor's Farm	020-244	Marshall House
020-242	Proctor's Farm	020-245	Marshall House
020-243	Proctor's Farm	020-246	Marshall House
020-244	Proctor's Farm	020-247	Marshall House
020-245	Proctor's Farm	020-248	Marshall House
020-246	Proctor's Farm	020-249	Marshall House
020-247	Proctor's Farm	020-250	Marshall House
020-248	Proctor's Farm	020-251	Marshall House
020-249	Proctor's Farm	020-252	Marshall House
020-250	Proctor's Farm	020-253	Marshall House
020-251	Proctor's Farm	020-254	Marshall House
020-252	Proctor's Farm	020-255	Marshall House
020-253	Proctor's Farm	020-256	Marshall House
020-254	Proctor's Farm	020-257	Marshall House
020-255	Proctor's Farm	020-258	Marshall House
020-256	Proctor's Farm	020-259	Marshall House
020-257	Proctor's Farm	020-260	Marshall House
020-258	Proctor's Farm	020-261	Marshall House
020-259	Proctor's Farm	020-262	Marshall House
020-260	Proctor's Farm	020-263	Marshall House
020-261	Proctor's Farm	020-264	Marshall House
020-262	Proctor's Farm	020-265	Marshall House
020-263	Proctor's Farm	020-266	Marshall House
020-264	Proctor's Farm	020-267	Marshall House
020-265	Proctor's Farm	020-268	Marshall House
020-266	Proctor's Farm	020-269	Marshall House
020-267	Proctor's Farm	020-270	Marshall House
020-268	Proctor's Farm	020-271	Marshall House
020-269	Proctor's Farm	020-272	Marshall House
020-270	Proctor's Farm	020-273	Marshall House
020-271	Proctor's Farm	020-274	Marshall House
020-272	Proctor's Farm	020-275	Marshall House
020-273	Proctor's Farm	020-276	Marshall House
020-274	Proctor's Farm	020-277	Marshall House
020-275	Proctor's Farm	020-278	Marshall House
020-276	Proctor's Farm	020-279	Marshall House
020-277	Proctor's Farm	020-280	Marshall House
020-278	Proctor's Farm	020-281	Marshall House
020-279	Proctor's Farm	020-282	Marshall House
020-280	Proctor's Farm	020-283	Marshall House
020-281	Proctor's Farm	020-284	Marshall House
020-282	Proctor's Farm	020-285	Marshall House
020-283	Proctor's Farm	020-286	Marshall House
020-284	Proctor's Farm	020-287	Marshall House
020-285	Proctor's Farm	020-288	Marshall House
020-286	Proctor's Farm	020-289	Marshall House
020-287	Proctor's Farm	020-290	Marshall House
020-288	Proctor's Farm	020-291	Marshall House
020-289	Proctor's Farm	020-292	Marshall House
020-290	Proctor's Farm	020-293	Marshall House
020-291	Proctor's Farm	020-294	Marshall House
020-292	Proctor's Farm	020-295	Marshall House
020-293	Proctor's Farm	020-296	Marshall House
020-294	Proctor's Farm	020-297	Marshall House
020-295	Proctor's Farm	020-298	Marshall House
020-296	Proctor's Farm	020-299	Marshall House
020-297	Proctor's Farm	020-300	Marshall House

Key To Cary's Joint Land Use Plan In Wake County

- Commercial
- High Density Residential
- Institutional
- Lake
- Low Density Residential
- Medium Density Residential
- Neighborhood Office
- Office/Institutional
- Parks
- Very Low Density Residential
- Existing - Cary Greenways
- Proposed - Cary Greenways

Chatham County TOWN of CARY

Scale: 1" = 1200'

February 26, 2007