

## Introduction to Transportation in Chatham County

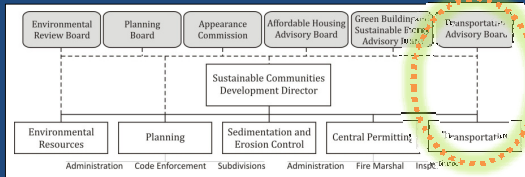
May 5, 2010

## Key Transportation Players

- Sustainable Communities Development Dept.
- Transportation Division
- CTN
- CHT
- TTA
- DCHC MPO
- TARPO
- TJCOG
- NCDOT

## Sustainable Communities Development Department

- New dept. – June 2009  
Brought together previously separate depts and divisions  
*Formulate and implement comprehensive plans and policy for ecologically sound land development...that will integrate land use, environmental resources, transportation, green building, and affordable housing*



## Transportation Division

- New division – Oct. 2009
- Trans planning AND mobility management
  - Work to achieve a coordinated, multi-modal transportation system
  - Identify transportation needs and opportunities, and pursue funding
  - Work closely with transportation partners, especially CTN

## Chatham Transit Network

- Non-profit organization designated as Chatham's community transportation provider
- Existing Services
  - Demand/Response w/in 2.5mi of Pittsboro and Siler City (M-F: 8am-4:30pm)
  - Cross-County Route (M-F: am,noon,pm)
  - Project Health Rides
  - Other medical and subscription service

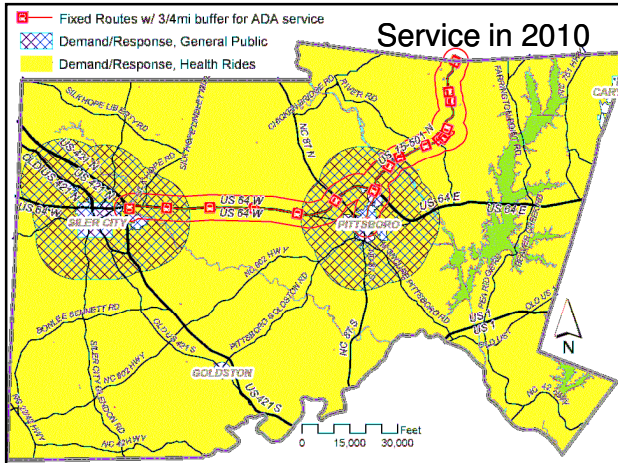


**\*\*NOTE\*\***  
CTN has its own TAB

## Chapel Hill Transit

- Transit provider for Chapel Hill, Carrboro and UNC
- PX route – from UNC to Pittsboro began August 2009





## TTA Triangle Transit Authority

- Regional transit provider
- Vanpools & gotriangle.org

## Durham-Chapel Hill-Carrboro Metropolitan Planning Org.

- Regional transportation planning – federal requirement
- Governed by elected officials from local gov'ts  
*Transportation Advisory Committee (TAC)*  
– Chatham Co. 1 of 15 votes

## TARPO Triangle Area Rural Planning Org.

- Voluntary association of local governments
- Plans rural transportation systems and advises NCDOT on rural transportation policy
- Governed by elected officials  
*Rural Transportation Advisory Committee (RTAC)*  
– Chatham Co. has 1 of 8 votes

## TJCG Triangle J Council of Governments

- Voluntary organization of municipal and county governments
  - Regional land use and transportation planning
  - Environmental protection
  - Water quality monitoring and preservation
  - Aging services and caregiver support
  - Economic development

## NCDOT NC Department of Transportation

- Division of Highways
  - Responsible for all public roads in unincorporated areas, and many in towns
- Public Transportation Division (PTD)
  - Works mainly with community transit systems
- Transportation Planning Branch (TPB)
  - Statewide Transportation Plan
  - Strategic Highway Corridors
  - Local Comprehensive Transportation Plans (CTP)

### Some Current Transportation Initiatives

- New sidewalk on 15-501
- US 64 Corridor Study
- CTN Service Changes
- CTSP
- CTP, Pittsboro and Chatham
- ATCI

### New Sidewalk on US 15-501

- ARRA funds thru DCHC MPO
- Nearly 1 mile on east side of US 15-501 from Manns Chapel Rd to just north of UNC park-and-ride
- Construction completed April 2010



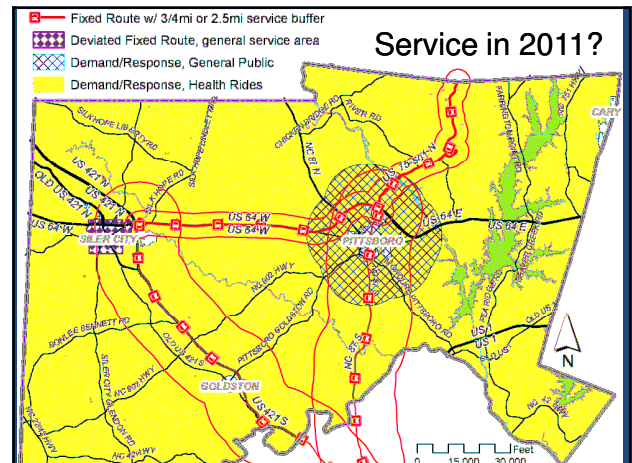
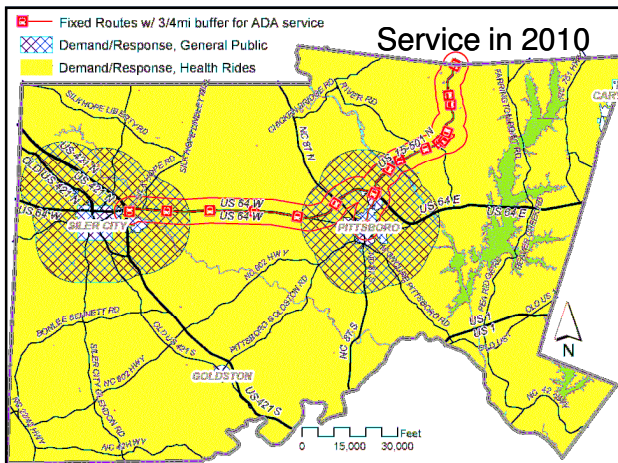
### US 64 Corridor Study

- NCDOT study, US 1 to US 64 Business interchange east of Pittsboro
- Vision: *preserve and enhance mobility and safety, balanced with community access and interests*
- Study began 2004
- To be completed late June 2010



### CTN Service Changes

- Planned new service
  - Convert existing Siler City demand/response to deviated fixed route (ETA June 2010)
- Proposed new services
  - Pittsboro-Sanford and Siler City-Sanford commuter service (JARC application)
  - Central Carolina Community College transportation voucher program (JARC app.)

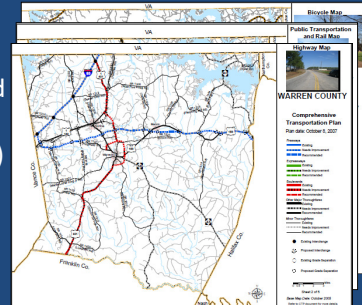


## Community Transportation Service Plan

- 5-year plan to increase mobility options and improve efficiency and effectiveness of community transportation
- Managed and 90% funded by NCDOT
- Chatham Transit Network's CTSP
  - ETA December 2010
  - Consultant is PBS&J

## Comprehensive Transportation Plans

- Administered by NCDOT TPB
- Must be adopted by NCDOT BOT and local gov't(s)
- Pittsboro CTP\*  
ETA Dec. 2010
- Chatham CTP  
next 1-2 years



\*Highway Element only

## Accessible Transportation Coalition Initiative

- Increase mobility for people with disabilities
- Chatham 1 of 13 communities chosen in 2010
- 2-day event to initiate "systems change"  
*Sept. 15-16 in Siler City*
- 1 year of technical assistance to implement change



## Questions

Melissa Guilbeau  
919.545.8337  
melissa.guilbeau@chathamnc.org

What do you hope to accomplish on this board?

## TAB Purpose

*...identify, study and make recommendations to the BOC on transportation and closely related issues*

- TAB for County CTP
- Comprehensive Plan, transportation element
- TIP and road paving priorities
- Development review (traffic impact analyses?)
- Legislative issues
- Public forum for transportation issues

## What do other TABs do?

- Coordinate with other boards
- Have separate bike/ped board or committee
- Various surveys, campaigns, plans, etc...
  - Bike and ped
  - Anti-idling
  - Transit
  - Healthy communities
  - Green fleets
  - Environmental assessments
  - Traffic calming
  - Capital improvements
  - Unmet needs

What do you hope to accomplish  
on this board?

**\*DISCUSSION\***